

Product datasheet for **RC230220**

SLC38A6 (NM_001172702) Human Tagged ORF Clone

Product data:

Product Type:	Expression Plasmids
Product Name:	SLC38A6 (NM_001172702) Human Tagged ORF Clone
Tag:	Myc-DDK
Symbol:	SLC38A6
Synonyms:	NAT-1; SNAT6
Mammalian Cell Selection:	Neomycin
Vector:	pCMV6-Entry (PS100001)
E. coli Selection:	Kanamycin (25 ug/mL)



[View online »](#)

ORF Nucleotide Sequence:

>RC230220 representing NM_001172702
 Red=Cloning site Blue=ORF Green=Tags(s)

TTTTGTAATACGACTCACTATAGGGCGGCCGGAATTCGTCGACTGGATCCGGTACCGAGGAGATCTGCC
 GCC**GCGATCGCC**

ATGGAGGCGTCTGGGGAGCTCAACGCTGAGCGGGCTGGTATGTCTGTCCAGCAGCCTGAAGAAG
 CGGAGGCCGAAGAGTTGAGTCCGTTGCTAAGCAACGAACCTCACAGACAGCGATCCCAGGTGTTTCATT
 TGGTTTATCAGTGTAAATTTGATGAATGCCATCATGGGAAGTGGCATCCTTGGCTTAGCTTATGTTTTG
 GCTAATACCGGTGCTTTGGATTAGCTTCTTGCTGCTGACAGTTGCTCTCCTGGCTTCTTACTCAGTCC
 ATCTTCTGCTTAGTATGTGATTAGCAGCTGTAACATCTTATGAAGATCTTGGACTCTTGCATTTGG
 ATTACCTGGAAAGTTGGTGGTGGCAGGCACCATAATAATTCAGAATATTGGAGCTATGTCATCTTATCTT
 TTAATTATTAACAGAGCTTCTGCTGCTATTGCAGAATTTTACTGGAGACTATAGTAGATATTGGT
 ATCTTGATGGACAACACTACTAATAATCATATGTGTTGGCATTGTTCCTCTTGCATCTTCCCAA
 AATAGGCTTTCTGGCTACACAAGTAGTTATCATTTTTCTTTATGATGTTCTTTGCTCTTGGTAAATA
 ATTAATAAATGGTCCATCCCTTGTCTCTGACATTAATTTATGTAGAGAAAGTTTCCAGATTTCAATG
 TTACAGATGATTGAAGCCAAAGCTCTTTCATTTCTCCAAGAGAGTGCTTATGCCTTACCAACCATGGC
 TTTTTCATTTCTGCTGCTACCTCAATATTGCCATATACTGTGAACTTCAAAGTCTTCAAAGAAAAGA
 ATGCAGAAATGTTACCAATACAGCAATTGCTTAAAGTTTCTCATTTATTTTATATCTGCACTCTTTGGGT
 ACCTCACTTTTTATGACAAAGTGGAGTCAGAATTAATAAAGTTATAGTAAATACTTATCACATGATGT
 TGTTGTCATGACTGTGAAGTTATGCATACTATTGCTGTGCTTTTACAGTCCCTCTAATCCACTCCCT
 GCCAGAAAAGCTGTAACAATGATGTTTTCTCAATTTCCATTCTCATGGATTCGCCATTTTTGATCA
 CTCTAGCACTCAATATTATCATCGTTTTACTTGAATATATGTTCTGACATTAGAAATGATTTGGTGT
 AGTTGGTGCCAGTACATCAACATGTTGATTTTTATATTCCAGGACTATTTTATCTTAAACTTAGCAGA
 GAGGATTTTCTGTCATGAAAAAGCTTGGGGTCTCATTCTGTGCGACAGTTGGCGTGCAGTGGTGTGA
 TCTCAGCTCATTGCAACCTCTGCCTCCCGGACTCAAGCAATCCTCCACCTCAGCCTCCAGAGTAGCTGA
 GACTACAGGAAGAGATACCATGGAGATGTGACCCAGAGGAAAGGCCACGCAAGGACACAGCAAGAAGGC
 AACTGTTTACAAGCCAAGGAAGAGGCCTCAGGAGAACCAACGTGTCCACACCTTGATCTTGCATCTCC
 CAACCTCCAGAACTGTGAGCAA

ACGCGTACGCGGCCGCTCGAGCAGAACTCATCTCAGAAGAGGATCTGGCAGCAAATGATATCCTGGATT
 ACAAGGATGACGACGATAAGGTTTAA

Protein Sequence:

>RC230220 representing NM_001172702
 Red=Cloning site Green=Tags(s)

MEASWGSFNAERGWYVSVQQPEEAEAEELSPLLSNELHRQRSPGVSFGLSVFNLMAIMGSGILGLAYVL
 ANTGVFGFSFLLLTVALLASYSVHLLSMCIQTAVTSYEDLGLFAFGLPGKLVVAGTIIIQNIGAMSSYL
 LIIKTELPAIIAEFLTGDYSRYWYLDGQTLIIICVGVFPLALLPKIGFLGYTSSLSFFMMFFALVVI
 IKKWSIPCPLTLNYVEKGFQISNVTDDCKPKLFHFSKESAYALPTMAFSFLCHTSILPIYCELQSPSKKR
 MQNVTNTAIALSFLIYFISALFGYLTfyDKVESELLKGYSKYLSHDVVVMTVKLCILFAVLLTVPLIHFP
 ARKAVTMMFFSNPFSWIRHFLITLALNIIIVLLAIYVPDIRNVFVVGASTSTCLIFIFPGLFYKLSR
 EDFLSWKKLGGILSHRLACSGVISAHCNLCLPDSNPPTSASRVAETTGRDTEMCTQRKGHARTQOEG
 NCLQAKGRGLRRTKRVHTLILHFPTSRTVSK

TRTRPLEQKLISEEDLAANDILDYKDDDDKV

Chromatograms:

https://cdn.origene.com/chromatograms/mk8007_c12.zip

Restriction Sites:

Sgfl-MluI

Cloning Scheme:



ACCN: NM_001172702

ORF Size: 1563 bp

OTI Disclaimer: The molecular sequence of this clone aligns with the gene accession number as a point of reference only. However, individual transcript sequences of the same gene can differ through naturally occurring variations (e.g. polymorphisms), each with its own valid existence. This clone is substantially in agreement with the reference, but a complete review of all prevailing variants is recommended prior to use. [More info](#)

OTI Annotation: This clone was engineered to express the complete ORF with an expression tag. Expression varies depending on the nature of the gene.

Components: The ORF clone is ion-exchange column purified and shipped in a 2D barcoded Matrix tube containing 10ug of transfection-ready, dried plasmid DNA (reconstitute with 100 ul of water).

Reconstitution Method:

1. Centrifuge at 5,000xg for 5min.
2. Carefully open the tube and add 100ul of sterile water to dissolve the DNA.
3. Close the tube and incubate for 10 minutes at room temperature.
4. Briefly vortex the tube and then do a quick spin (less than 5000xg) to concentrate the liquid at the bottom.
5. Store the suspended plasmid at -20°C. The DNA is stable for at least one year from date of shipping when stored at -20°C.

Note: Plasmids are not sterile. For experiments where strict sterility is required, filtration with 0.22um filter is required.

RefSeq: [NM_001172702.1](#), [NP_001166173.1](#)

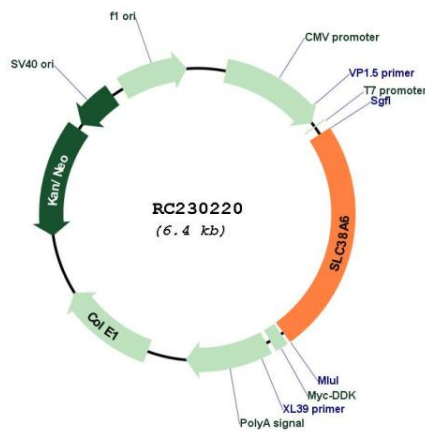
RefSeq ORF: 1566 bp

Locus ID: 145389

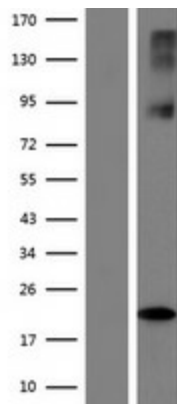
UniProt ID: [Q8IZM9](#)

Cytogenetics: 14q23.1
Protein Families: Transmembrane
MW: 58.4 kDa
Gene Summary: Probable sodium-dependent amino acid/proton antiporter, could be a neuronal transporter for glutamate.[UniProtKB/Swiss-Prot Function]

Product images:



Circular map for RC230220



Western blot validation of overexpression lysate (Cat# [LY433220]) using anti-DDK antibody (Cat# [TA50011-100]). Left: Cell lysates from untransfected HEK293T cells; Right: Cell lysates from HEK293T cells transfected with RC230220 using transfection reagent MegaTran 2.0 (Cat# [TT210002]).