

Product datasheet for **RC230218**

BANP (NM_001173543) Human Tagged ORF Clone

Product data:

Product Type:	Expression Plasmids
Product Name:	BANP (NM_001173543) Human Tagged ORF Clone
Tag:	Myc-DDK
Symbol:	BANP
Synonyms:	BEND1; SMAR1; SMARBP1
Mammalian Cell Selection:	Neomycin
Vector:	pCMV6-Entry (PS100001)
E. coli Selection:	Kanamycin (25 ug/mL)



[View online »](#)

ORF Nucleotide Sequence:

>RC230218 representing NM_001173543
 Red=Cloning site Blue=ORF Green=Tags(s)

TTTTGTAATACGACTCACTATAGGGCGGCCGGAATTCGTCGACTGGATCCGGTACCGAGGAGATCTGCC
 GCC**CGCATCGCC**

ATGATGTCGGAACACGACCTGGCCGATGTGGTTAGATTGCAGTGAAGACCTGAGCCCTGACCACCCAG
 TTGTTTTGGAGAATCATGTAGTGACAGATGAAGACGAACCTGCTTTGAAACGCCAGCGACTAGAAATCAA
 TTGCCAGGATCCATCTATAAAGACAATCTGCTTCCGGTTGGATAGCATTGAAGCCAAATTGCAAGCCCTG
 GAGGCTACTTGTAAATCCTTAGAAGAAAAGCTGGATCTGGTCACGAACAAGCAGCACAGCCCATCCAGG
 TCCCCATGGTGGCCGGCTCCCCTCTCGGGGCAACCCAGACGTGCAACAAAGTGCGATGCGTCTCCCCCA
 GACTACAGTAATACTCAACAATGATCGGCAGAACGCCATTGTAGCCAAGATGGAAGACCCCTTGAGCAAC
 AGGGCACCCGATTCCCTGGAAAATGTCATTAGCAACGCTGTGCCTGGCGTCGGCAGAACACCATTGTGG
 TGAAGGTGCCGGCCAAGAAGACAGCCACCACGAGGACGGGAGAGCGGCTCGGAGGCCAGCGACTCTGT
 GTCACGCTGTGGCAGGCGGGCAGTCAGAGCATCGGGAGCAACGTCACGCTCATCACCTGAACTCGGAA
 GAGGACTACCCCAATGGCACCTGGCTGGCGACGAGAACAACCCCGAGATGCGGGTACGCTGCGCCATCA
 TCCCCTCCGACATGCTGCACATCAGCACCAACTGCCGCACGGCCGAGAAGATGGCGCTCACGCTGCTGGA
 CTACCTCTTCCACCGGAGGTGCAGGCTGTGTCCAACCTCTCGGGGACGGCAAGCACGGGAAGAAGCAG
 CTGGACCCGCTCACCATCTACGGCATCCGGTGTACCTTTTCTATAAAATTTGGCATCACAGAATCCGACT
 GGTACCGAATCAAGCAGAGCATCGACTCCAAGTGCCGCACGGCGTGGCGGCGAAGCAGCGGGGCCAGAG
 CCTGGCGGTCAAGAGCTTCTCGCGGAGAACGCCAACTCGTCTCCTACTGCCCTCAGAGCCGATGATG
 AGCACCCACCTCCTGCCAGCGAGTCCCAGCCAGCACAGCCGACGCCAGCCGAGCCCTGACTACGCGCTGG
 CCAACGCACAGCAGGTGCAGATCCACCAGATCGGAGAAGACGGACAGGTGCAAGTAGGACACCTCCACAT
 CGCCCAGGTGCCGAGGGGAGCAAGTCCAGATCACGCAGGACAGCGAGGGCAACCTCCAGATCCATCAC
 GTGGGGCAGGACGGTCACTTCTAGAGGCCACCCGCATCCCCTGCCTCCTGGCCCATCCGTCTTCAAAG
 CCAGCAGTGGCCAGGTGCTGCAGGGTGCACAGCTGATCGCCGTGGCTCCTCGGACCCCGCGGGCGGG
 CGTGGATGGGTGCGCACTCCAGGGCAGCGACATCCAGGTTAGTACGTGCAGCTGGCGCCAGTGAGTGAC
 CACACGGCCGGGCACAGACGGCCGAAGCCCTGCAGCCACGCTACAGCCGGAGATGCAGCTCGAGCACG
 GGGCCATCCAGATTCAG

ACGCGTACGCGGCCGCTCGAGCAGAACTCATCTCAGAAGAGGATCTGGCAGCAAATGATATCCTGGATT
 ACAAGGATGACGACGATAAGGTTTAA

Protein Sequence:

>RC230218 representing NM_001173543
 Red=Cloning site Green=Tags(s)

MMSEHDLADVQIAVEDLSPDHPVLENHVVTEDEPALKRQRLEINCQDPSIKTICLRLDSIEAKLQAL
 EATCKSLEEKLDLVTNKQHSPIQVPMVAGSPLGATQTCNKVRCVVPQTTVILNDRQNAIVAKMEDPLSN
 RAPDSLENVISNAVPRRQNTIVVKVPGQEDSHHEDGESGSEASDSVSSCGQAGSQSIGSNVTLITLNSE
 EDYPNGTWLGDENPEMRVRCIIPSDMLHISTNCRTAEKMALLLDYL FHREVQAVSNLSGQGHKHKQ
 LDPLTIYGIRCHLFYKFGITESDWYRIKQSIDSKRTAWRRKQRGQSLAVKFSRRTPNSSSYCPSEPM
 STPPPASELPQPQPQALHYALANAQQVQIHQIGEDGQVQVGHHLIAQVPQGEVQITQDSEGNLQIHH
 VGQDQQLLEATRIPCLLAPSVFKASSGQVLQGAQLIAVASDPAAGVDGSPLOQSDIQVQYVQLAPVSD
 HTAGAQTAEALQPTLQPEMQLEHGAIQIQ

TRTRPLEQKLISEEDLAANDILDYKDDDDKV

Chromatograms:

https://cdn.origene.com/chromatograms/mk8065_b02.zip

Restriction Sites:

Sgfl-Mlul

Cloning Scheme:


ACCN: NM_001173543

ORF Size: 1557 bp

OTI Disclaimer: The molecular sequence of this clone aligns with the gene accession number as a point of reference only. However, individual transcript sequences of the same gene can differ through naturally occurring variations (e.g. polymorphisms), each with its own valid existence. This clone is substantially in agreement with the reference, but a complete review of all prevailing variants is recommended prior to use. [More info](#)

OTI Annotation: This clone was engineered to express the complete ORF with an expression tag. Expression varies depending on the nature of the gene.

Components: The ORF clone is ion-exchange column purified and shipped in a 2D barcoded Matrix tube containing 10ug of transfection-ready, dried plasmid DNA (reconstitute with 100 ul of water).

Reconstitution Method:

1. Centrifuge at 5,000xg for 5min.
2. Carefully open the tube and add 100ul of sterile water to dissolve the DNA.
3. Close the tube and incubate for 10 minutes at room temperature.
4. Briefly vortex the tube and then do a quick spin (less than 5000xg) to concentrate the liquid at the bottom.
5. Store the suspended plasmid at -20°C. The DNA is stable for at least one year from date of shipping when stored at -20°C.

RefSeq: [NM_001173543.1](#), [NP_001167014.1](#)

RefSeq ORF: 1560 bp

Locus ID: 54971

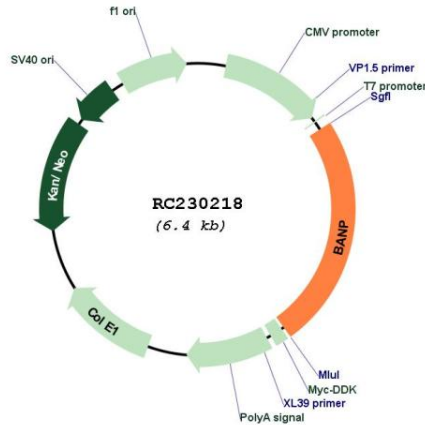
UniProt ID: [Q8N9N5](#)

Cytogenetics: 16q24.2

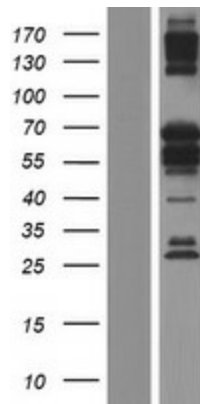
MW: 56.9 kDa

Gene Summary:

This gene encodes a protein that binds to matrix attachment regions. The protein forms a complex with p53 and negatively regulates p53 transcription, and functions as a tumor suppressor and cell cycle regulator. Multiple transcript variants encoding different isoforms have been found for this gene. [provided by RefSeq, Mar 2010]

Product images:


Circular map for RC230218



Western blot validation of overexpression lysate (Cat# [LY433218]) using anti-DDK antibody (Cat# [TA50011-100]). Left: Cell lysates from untransfected HEK293T cells; Right: Cell lysates from HEK293T cells transfected with RC230218 using transfection reagent MegaTran 2.0 (Cat# [TT210002]).