

Product datasheet for **RC230216**

CDC20B (NM_001170402) Human Tagged ORF Clone

Product data:

Product Type:	Expression Plasmids
Product Name:	CDC20B (NM_001170402) Human Tagged ORF Clone
Tag:	Myc-DDK
Symbol:	CDC20B
Synonyms:	G6VTS76519
Mammalian Cell Selection:	Neomycin
Vector:	pCMV6-Entry (PS100001)
E. coli Selection:	Kanamycin (25 ug/mL)



[View online »](#)

ORF Nucleotide Sequence:

>RC230216 representing NM_001170402
 Red=Cloning site Blue=ORF Green=Tags(s)

TTTTGTAATACGACTCACTATAGGGCGGCCGGAATTCGTCGACTGGATCCGGTACCGAGGAGATCTGCC
 GCC**CGGATCGCC**

ATGGAGTGGAAACTGGAGCGCACCCGCGCTCGGAGGGTCCGCACGGAAGAGGAGATGCTGTGGGAAAGTA
 TCATGCGTGTGCTCTCCAAGACTTGAAGCAGAAGAGAAGTCAAGATTCGCCAACGTACTCGATTCACT
 TAATGCTACGTATTCTGACTTTAAGAGCAACTTTGCGAAGAGGCTGTCCGCAGAGTTCTCTGTCGAGT
 AGCCCCATTACCACAAGGTGGCAGCAAAGTCAAAGTCTGCTCTGATTCTTTGGGAAAGAGC
 AGTCAACCACCTACCTCCAGAAGCTTCCGGATCAGTGTGAAGACACCGCTGAGAAAGAGACCTTGAC
 TCTAGGATCCCGCAAAGAACAAGTGAAGACCCAGCAAAGGAATTTCTGAAACAAGTAACTCTGCTCTC
 CATTCTTGAAGGCACCTCATGCAATGGACAGAGACTGGAAAGAAAGTGTGCTCAAAGGGCAGAAAT
 GCCTAAAACAAGTCTTTGTAACCCAGAAGCTGGTTCAGCAGGCTAATGGAAAAATGCAGCTCTGTGAGCA
 ATCCGAATGTGTTGGAAAGGCTCAAAGATGGAGTCAAGATGAATCCTTCCATCTTAAAAGTTCTGGT
 GATATAAACGATTCCATACTCCAACAGAGGTGAAGATTCATATTACTGGTCTTCGAAATGACTACTATC
 TGAATATCCTAGATTGGAGTTTTCAGAATCTTGTGCCATAGCCCTGGGCTCTGCTGTATACATCTGGAA
 TGGGAGAAACCAATGGGATTGAAAACATAGACTTAAGTCTCACTTGTAACTATATCTTCTGTGTGCC
 TGGATAAAGAGGGAACTTGCTGGCAGTTGGCACCAGCGAGGGAGAAGTGAATATGGGATGTGGTAA
 CTAAGGCGGCTGAGAAATATGCTTGGTCATTTGTGTCAGTGTGGGCTCTGAGCTGGAATCACTTTAT
 CCTCAGCAGTGGGTCAAGACTGGGGCTGTTTATCATCACGATGTTCCGGTAGCCAGCATCATGTTGGA
 ACACCTCGCCACAAGCAAGCTGTGTGCTCTGAAGTGGTCAAGGATGCGCAGGGCAACCGCTGAAAGT
 CATAACCCAGTCTACGGCAGTCAAGGCCATGGATTGGTGTCCCTGGCAGTCTGGGGTCTTGGCATTGGA
 GGAGGAATGAAGGATGGACGCTTACACATCTTGGATATAAATGCTGGGAAGAGCATCCAGACCCCAAGCA
 CAAACTCACAGATTTGTTCTTAATCTGGCTACCTAAGACAAAGGAGATTGCAACTGGTCAAGGACTCC
 CAAGAATGATGTGACTGTGTGGACCTGTCCACTGTGTCCAGGTGAGTGGGTTTTTGGCCACAGGGGC
 AGAGTGTGCACCTGTCTTGTAGTCCAGACCAGACCCGGGTGTTTTCTGCTGCAGCTGATGGGACGGCT
 CTGTATGGAATTGCTAC

ACGCGTACGCGGCCGCTCGAGCAGAAACTCATCTCAGAAGAGGATCTGGCAGCAAATGATATCTGGATT
 ACAAGGATGACGACGATAAGGTTTAA

Protein Sequence:

>RC230216 representing NM_001170402
 Red=Cloning site Green=Tags(s)

MEWKLERTAPRRVRTEEEMLWESIMRVLSKDLKQKRSQDSANVLDSVNATYSDFKSNFAKRLSAEVPVAS
 SPITTRWQQSQTRALSSDSFGEEQSTTYLPEASGSVLKTPPEKETLTLGSRKEQLKTPSKGISETSNSAL
 HFCKAPHAMDRDWKESVASKGQKCLKQLFVTQNVVQQANGKMLCEQSECVWKGCKDGVRFESFLKSSG
 DINDSILQPEVKIHTGLRNDYYLNILDWSFQNLVAIALGSVYIWNENHNGIENIDLSTCNYSVSVS
 WIKEGTCLAVGTSEGEVQLWDVVTKKRLRNMLGHL SVVGALSWNHFILSSGSRLGRVYHHDVVRVAQHVG
 TLRHKQAVCALKWSPDGRLLSSGSDGLLTIWPHDPGASAQGQPLKVITQSTAVKAMDWCPWQSGVLAIG
 GGMKDGRLHILDINAGKSIQTPSTNSQICSLIWLPKTKEIATGQGTGPKNDVTVWTCPTVSRSGGFFGHRG
 RVLHLSLSPDQTRVFSAAADGTASVWNCY

TRTRPLEQKLISEEDLAANDILDYKDDDDKV

Chromatograms:

https://cdn.origene.com/chromatograms/mk8065_a12.zip

Restriction Sites:

Sgfl-Mlul

Cloning Scheme:


ACCN: NM_001170402

ORF Size: 1557 bp

OTI Disclaimer: The molecular sequence of this clone aligns with the gene accession number as a point of reference only. However, individual transcript sequences of the same gene can differ through naturally occurring variations (e.g. polymorphisms), each with its own valid existence. This clone is substantially in agreement with the reference, but a complete review of all prevailing variants is recommended prior to use. [More info](#)

OTI Annotation: This clone was engineered to express the complete ORF with an expression tag. Expression varies depending on the nature of the gene.

Components: The ORF clone is ion-exchange column purified and shipped in a 2D barcoded Matrix tube containing 10ug of transfection-ready, dried plasmid DNA (reconstitute with 100 ul of water).

Reconstitution Method:

1. Centrifuge at 5,000xg for 5min.
2. Carefully open the tube and add 100ul of sterile water to dissolve the DNA.
3. Close the tube and incubate for 10 minutes at room temperature.
4. Briefly vortex the tube and then do a quick spin (less than 5000xg) to concentrate the liquid at the bottom.
5. Store the suspended plasmid at -20°C. The DNA is stable for at least one year from date of shipping when stored at -20°C.

RefSeq: [NM_001170402.1](#), [NP_001163873.1](#)

RefSeq ORF: 1560 bp

Locus ID: 166979

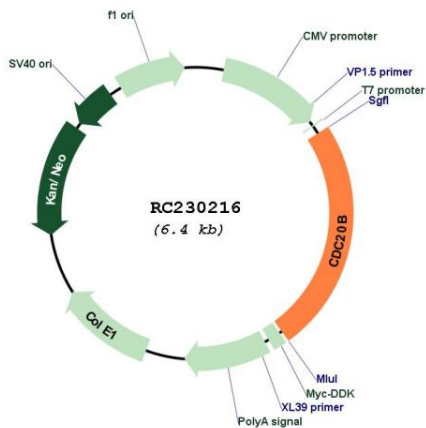
UniProt ID: [Q86Y33](#)

Cytogenetics: 5q11.2

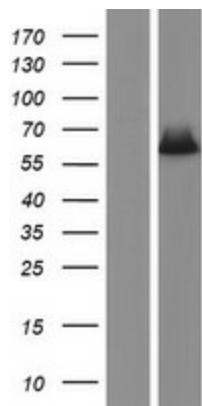
Protein Families: Druggable Genome

MW: 57.8 kDa

Product images:



Circular map for RC230216



Western blot validation of overexpression lysate (Cat# [LY433216]) using anti-DDK antibody (Cat# [TA50011-100]). Left: Cell lysates from untransfected HEK293T cells; Right: Cell lysates from HEK293T cells transfected with RC230216 using transfection reagent MegaTran 2.0 (Cat# [TT210002]).