

Product datasheet for **RC230215**

RO60 (NM_001173525) Human Tagged ORF Clone

Product data:

Product Type:	Expression Plasmids
Product Name:	RO60 (NM_001173525) Human Tagged ORF Clone
Tag:	Myc-DDK
Symbol:	RO60
Synonyms:	RORNP; SSA2; TROVE2
Mammalian Cell Selection:	Neomycin
Vector:	pCMV6-Entry (PS100001)
E. coli Selection:	Kanamycin (25 ug/mL)



[View online »](#)

ORF Nucleotide Sequence:

>RC230215 representing NM_001173525
 Red=Cloning site Blue=ORF Green=Tags(s)

TTTTGTAATACGACTCACTATAGGGCGGCCGGAATTCGTCGACTGGATCCGGTACCGAGGAGATCTGCC
 GCC**CGCATCGCC**

ATGGAGGAATCTGTAACCAAAATGCAGCCACTGAATGAGAAGCAGATAGCCAATTCTCAGGATGGATATG
 TATGGCAAGTCACTGACATGAATCGACTACACCGTTCCTATGTTTCGGTCTGAAGGTGGGACTTATTA
 TATCAAAGAACAGAAGTTGGGCCTTAAAAATGCTGAAGCTTTAATTAGATTGATTGAAGATGGCAGAGGA
 TGTGAAGTGATACAAGAAATAAAGTCATTTAGTCAAGAAGGCAGAACCAAAAGCAAGAGCCTATGCTCT
 TTGCACCTGCCATTTGTTCCAGTGCTCCGACATAAGCACAAAACAAGCAGCATTAAAGCTGTTTCTGA
 AGTTTGTGCGATTCTACCCATCTCTTTACTTTTATCCAGTTTAAAGAAAGATCTGAAGGAAAGCATGAAA
 TGTGGCATGTGGGTCTGCCCTCCGGAAGGCTATAGCGGACTGGTACAATGAGAAAGGTGGCATGGCCC
 TTGCTCTGGCAGTTACAAAATATAAACAGAGAAATGGCTGGTCTCACAAGATCTATTAAGATTGCACA
 TCTTAAACCTTCCAGTGAAGGACTTGAATTGTGACCAAAATATATTACAAAGGGCTGAAAGAAGTTCAT
 GAATTGTATAAAGAAAAAGCACTCTCTGTGGAGACTGAAAAATTATTAAGTATCTGGAGGCTGTAGAGA
 AAGTGAAGCGCACAAAGAGATGAGCTAGAAGTCATTCATCTAATAGAAGAACATAGATTAGTTAGAGAACA
 TCTTTTAACAATCACTTAAAGTCTAAAGAGGTATGGAAGGCTTTGTTACAAGAAATGCCGCTTACTGCA
 TTACTAAGGAATCTAGGAAAGATGACTGCTAATTCAGTACTTGAACCAGGAAATTCAGAAGTATCTTTAG
 TATGTGAAAACTGTGTAATGAAAACTATTAATAAAGGCTCGTATACATCCATTTTCATATTTTGATCGC
 ATTAGAACTTACAAGACAGGTCATGGTCTCAGAGGAAACTGAAGTGGCGCCCTGATGAAGAAATTTG
 AAAGCATTTGGATGCTGCTTTTATAAACATTTAAGACAGTTGAACCAACTGGAAAACGTTTCTTACTAG
 CTGTTGATGTCAGTGCTTCTATGAACCAAGAGTTTTGGGTAGTATACTCAACGCTAGTACAGTTGCTGC
 AGCAATGTGCATGGTTGTCACACGAACAGAAAAAGATTCTTATGTAGTTGCTTTTTCCGATGAAATGGTA
 CCATGTCCAGTACTACAGATATGACCTTACAACAGGTTTTAATGGCTATGAGTCAGATCCAGCAGGTG
 GAACTGATTGCTCTTCCAATGATCTGGGCTCAGAAGACAAACACACCTGCTGATGTCTTCATTGTATT
 CACTGATAATGAGACCTTTGCTGGAGGTGCCATCCTGCTATTGCTCTGAGGGAGTATCGAAAGAAATG
 GATATTCCAGCTAAATTGATTGTTTGTGGAATGACATCAATGGTTTACCATTGCAGACCCAGATGATA
 GAGACTGTAAAA

ACGCGTACGCGGCCGCTCGAGCAGAAACTCATCTCAGAAGAGGATCTGGCAGCAAATGATATCCTGGATT
 ACAAGGATGACGACGATAAGGTTTAA

Protein Sequence:

>RC230215 representing NM_001173525
 Red=Cloning site Green=Tags(s)

MEESVNMQPLNEKQIANSQDGYVWQVDTMNRHLRFLCFGSEGGTYIYKEQKLGLENAEALIRLIEDGRG
 CEVIQEIKSFSQEGRTTKQEPMLFALAIQSQSDISTKQAAFKAIVSEVCRIPHLFTFIQFKDLKESMK
 CGMWGRALRKAIAADWYNEKGMALALAVTKYQRNGWSHKDLLRSLKPSSEGLAIVTKYITKGWKEVH
 ELYKEKALSVETEKLLKYLEAVEKVKRTRDELEVIHLIEEHLVREHLLTNHLKSKEVWKALLQEMPLTA
 LLRNLGKMTANSVLEPGNSEVSLVCEKLCNEKLLKARIHPFHILIALETYKTGHGLRGKLRPDEEIL
 KALDAAFYKTFKVEPTGKRFLAVDVSASMNQVLSILNASTVAAAMCMVTRTEKDSYVVAFSDEM
 PCPVTTDMLQQVLMAMSQIPAGGTDGSLPMIWAQKTNTPADVIVFTDNETFAGGVHPAIALREYRKKM
 DIPAKLIVCGMTSNGFTIADPDRDVTK

TRTRPLEQKLISEEDLAANDILDYKDDDDKV

Chromatograms:

https://cdn.origene.com/chromatograms/mk8064_g04.zip

Restriction Sites:

Sgfl-MluI

Cloning Scheme:

ACCN:

NM_001173525

ORF Size:

1554 bp

OTI Disclaimer:

The molecular sequence of this clone aligns with the gene accession number as a point of reference only. However, individual transcript sequences of the same gene can differ through naturally occurring variations (e.g. polymorphisms), each with its own valid existence. This clone is substantially in agreement with the reference, but a complete review of all prevailing variants is recommended prior to use. [More info](#)

OTI Annotation:

This clone was engineered to express the complete ORF with an expression tag. Expression varies depending on the nature of the gene.

Components:

The ORF clone is ion-exchange column purified and shipped in a 2D barcoded Matrix tube containing 10ug of transfection-ready, dried plasmid DNA (reconstitute with 100 ul of water).

Reconstitution Method:

1. Centrifuge at 5,000xg for 5min.
2. Carefully open the tube and add 100ul of sterile water to dissolve the DNA.
3. Close the tube and incubate for 10 minutes at room temperature.
4. Briefly vortex the tube and then do a quick spin (less than 5000xg) to concentrate the liquid at the bottom.
5. Store the suspended plasmid at -20°C. The DNA is stable for at least one year from date of shipping when stored at -20°C.

RefSeq:
[NM_001173525.1](#), [NP_001166996.1](#)
RefSeq ORF:

1557 bp

Locus ID:

6738

UniProt ID:
[P10155](#)
Cytogenetics:

1q31.2

Protein Families:

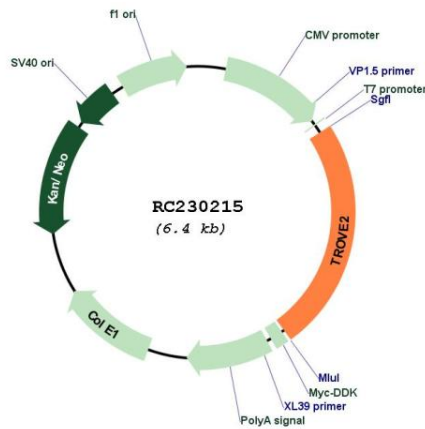
Transcription Factors

Protein Pathways: Systemic lupus erythematosus

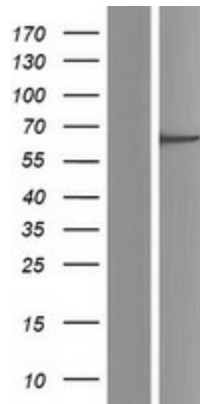
MW: 58.9 kDa

Gene Summary: RNA-binding protein that binds to misfolded non-coding RNAs, pre-5S rRNA, and several small cytoplasmic RNA molecules known as Y RNAs. May stabilize some of these RNAs and protect them from degradation (PubMed:18056422). Binds to endogenous Alu retroelements which are induced by type I interferon and stimulate porinflammatoiry cytokine secretion. Regulates the expression of Alu retroelements as well as inflammatory genes (PubMed:26382853).[UniProtKB/Swiss-Prot Function]

Product images:



Circular map for RC230215



Western blot validation of overexpression lysate (Cat# [LY433215]) using anti-DDK antibody (Cat# [TA50011-100]). Left: Cell lysates from untransfected HEK293T cells; Right: Cell lysates from HEK293T cells transfected with RC230215 using transfection reagent MegaTran 2.0 (Cat# [TT210002]).