

Product datasheet for **RC230210**

Adractalin (AAAS) (NM_001173466) Human Tagged ORF Clone

Product data:

Product Type:	Expression Plasmids
Product Name:	Adractalin (AAAS) (NM_001173466) Human Tagged ORF Clone
Tag:	Myc-DDK
Symbol:	Adractalin
Synonyms:	AAA; AAASb; ADRACALA; ADRACALIN; ALADIN; GL003
Mammalian Cell Selection:	Neomycin
Vector:	pCMV6-Entry (PS100001)
E. coli Selection:	Kanamycin (25 ug/mL)



[View online »](#)

ORF Nucleotide Sequence:

>RC230210 representing NM_001173466
 Red=Cloning site Blue=ORF Green=Tags(s)

TTTTGTAATACGACTCACTATAGGGCGGCCGGAATTCGTCGACTGGATCCGGTACCGAGGAGATCTGCC
 GCC**CGGATCGCC**

ATGTGCTCTCTGGGGTTGTTCCCTCCTCCACCGCCTCGGGTCAAGTCACCTATATGAGCACAATAACG
 AGCTGGTGACGGCAGTAGCTATGAGAGCCCGCCCCGACTTCCGGGGCCAGTGGATCAATCTTCTGT
 CCTACAACGTACAAGGATCCCCAAAGACCCCTGGAAGGCTGGACCATGGCACAAGAAGTGCCTTCATC
 CATCACCGGGAGCAAGTGTGGAAGAGATGCATCAACATTTGGCGTGATGTGGCCTTTTTGGGGTCTAA
 ATGAAATTGCAAACCTCAGAAGAAGAGGTGTTGAGTGGTGAAGACGGCATCCGGCTGGGCCCTGGCACT
 CTGTGATGGGCCTTCCCTCCATGGTCCCTGTTCCCCATCTGTCTCTCAGGAGCGAAGATCTGATC
 GCTGAATTTGCCAAGTCACAAATTGCACCATAGTCCCTCCCTGAAGCACCGGCTGCAGCGAAATGTGG
 CGTCTCTGGCCTGGAAGCCCTTAGTGCCTCTGTCTTGGCTGTGGCTGCCAGAGCTGCATTCTTATCTG
 GACCTGGACCTACCTCCTGTCTACCGACCTCTTCTGGCTGTGCCAAGTGTGTCTCACCTGGG
 CATAACCTGTTACCAGCTTGGCCTGGGCCCCAGTGGGGGGCGGCTGCTCTCAGCTTACCCGTGGATG
 CTGCTATCCGGGTATGGGATGTCTCAACAGAGACCTGTGTCCCTTCCCTGGTTCGAGGAGGTGGGGT
 GACCAACCTGCTCTGGTCCCCAGACGGCAGCAAAATCCTGGTACCCTCCTCAGCTGTCTTTCGAGTC
 TGGGAGGCCAGATGTGGACTTGTGAGAGGTGGCTACTCTATCAGGGCGCTGTGAGACTGGCTGTGGA
 GCCAGATGGCAGCCGACTGCTGTTCACTGTATTGGGAGAGCCACTGATTTACTCCCTGTCTTTCCAGA
 ACGTTGTGGTGAAGGAAAGGGTGCCTTGGAGGTGCAAAGTCAGCAACGATTGTGGCAGATCTGTCTGAG
 ACAACAATACAGACACCAGATGGTGAAGAGAGGCTTGGGGAGAGGCTCACTCCATGGTCTGGGACCCCA
 GTGGGGAACGCTGGCTGTGCTTATGAAAGGAAAGCCAAAGGTACAGGATGGTAAACCAGTCACTCCT
 TTTTCGCACTCGAAACAGCCCTGTGTTGAGCTCCTTCCCTGTGGCATTATCCAGGGGGAGCCAGGACC
 CAGCCCCAGCTCATCACTTTCCATCCTTCCCTTCAACAAAGGGGCCCTGCTCAGTGTGGGCTGGTCCACAG
 GCCGAATTGCCACATCCCGCTGTACTTTGTCAATGCCAGTTTCCACGTTTTAGCCAGTCTTGGGCG
 GGCCAGGAACCCCTGCTGGGGTGGAGGCTCTATTCATGACCTGCCCTCTTTACTGAGACATCCCCA
 ACCTCTGCCCTTGGGACCTCTCCAGGGCCACCACCTGTTCTGCCCACTCCCCACATCCCACCTC

**ACGGTACGGCGCCGCTCGAGCAGAACTCATCTCAGAAGAGGATCTGGCAGCAATGATATCCTGGATT
 ACAAGGATGACGACGATAAGGTTTAA**

Protein Sequence:

>RC230210 representing NM_001173466
 Red=Cloning site Green=Tags(s)

MCSLGLFPPPPRQVTLYEHNELVTGSSYSPPPDFRGQWINLPVLQLTKDPLKTPGRLDHGTRTAFI
 HHREQVWKRCINIWRDVGLFGVLEIANSEEEVFEWKTASGWALALCRWASSLHLSLPHLSLRSEDLI
 AEFQVNTCTIVPSLKHRLQRNVASLAWKPLSASVLAVACQSCILIWTLDPSTLSTRPSSGCAQVLSHPG
 HTPVTSLAWAPSGRLLSASPVDAAIRVWDVSTETCVPLPWFRRGGVTNLLWSPDGSKILATTPSAVFRV
 WEAQMWTCEWPTLSGRCQTGCWSPDGSRLFTVLGEPLIYSLFPERCGEGKGCYVGGAKSATIVADLSE
 TTIQTPDGEERLGGEAHSMVWDPSGERLAVLMKGKPRVQDGKPVILLFRTRNSPVFELLPCGIIQGEPGA
 QPQLITFHPSFNKGALLSVGWSTGRIAHIPLYFVNAQPPRFSPVLGRAQEPAGGGGSIHDLPLFTETSP
 TSAPWDPLPGPPVLPSPHSHL

TRTRPLEQKLISEEDLAANDILDYKDDDDKV

Chromatograms:

https://cdn.origene.com/chromatograms/mk8064_e02.zip

Restriction Sites:

SgfI-MluI

Cloning Scheme:


ACCN: NM_001173466

ORF Size: 1539 bp

OTI Disclaimer: The molecular sequence of this clone aligns with the gene accession number as a point of reference only. However, individual transcript sequences of the same gene can differ through naturally occurring variations (e.g. polymorphisms), each with its own valid existence. This clone is substantially in agreement with the reference, but a complete review of all prevailing variants is recommended prior to use. [More info](#)

OTI Annotation: This clone was engineered to express the complete ORF with an expression tag. Expression varies depending on the nature of the gene.

Components: The ORF clone is ion-exchange column purified and shipped in a 2D barcoded Matrix tube containing 10ug of transfection-ready, dried plasmid DNA (reconstitute with 100 ul of water).

Reconstitution Method:

1. Centrifuge at 5,000xg for 5min.
2. Carefully open the tube and add 100ul of sterile water to dissolve the DNA.
3. Close the tube and incubate for 10 minutes at room temperature.
4. Briefly vortex the tube and then do a quick spin (less than 5000xg) to concentrate the liquid at the bottom.
5. Store the suspended plasmid at -20°C. The DNA is stable for at least one year from date of shipping when stored at -20°C.

RefSeq: [NM_001173466.2](#)

RefSeq ORF: 1542 bp

Locus ID: 8086

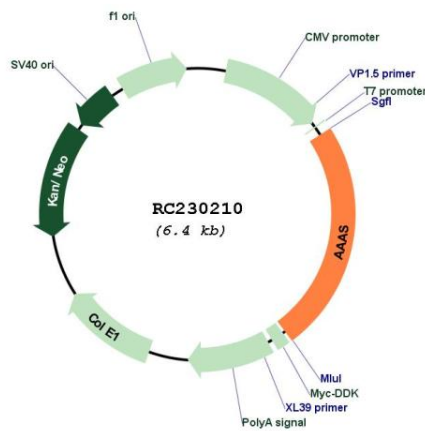
UniProt ID: [Q9NRG9](#)

Cytogenetics: 12q13.13

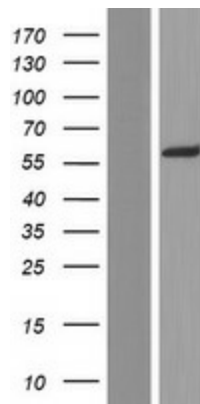
MW: 56.3 kDa

Gene Summary:

The protein encoded by this gene is a member of the WD-repeat family of regulatory proteins and may be involved in normal development of the peripheral and central nervous system. The encoded protein is part of the nuclear pore complex and is anchored there by NDC1. Defects in this gene are a cause of achalasia-addisonianism-alacrima syndrome (AAAS), also called triple-A syndrome or Allgrove syndrome. Two transcript variants encoding different isoforms have been found for this gene. [provided by RefSeq, Mar 2010]

Product images:


Circular map for RC230210



Western blot validation of overexpression lysate (Cat# [LY433210]) using anti-DDK antibody (Cat# [TA50011-100]). Left: Cell lysates from untransfected HEK293T cells; Right: Cell lysates from HEK293T cells transfected with RC230210 using transfection reagent MegaTran 2.0 (Cat# [TT210002]).