

Product datasheet for **RC230209**

ZNF829 (NM_001171979) Human Tagged ORF Clone

Product data:

Product Type:	Expression Plasmids
Product Name:	ZNF829 (NM_001171979) Human Tagged ORF Clone
Tag:	Myc-DDK
Symbol:	ZNF829
Mammalian Cell Selection:	Neomycin
Vector:	pCMV6-Entry (PS100001)
E. coli Selection:	Kanamycin (25 ug/mL)



[View online »](#)

ORF Nucleotide Sequence:

>RC230209 representing NM_001171979
 Red=Cloning site Blue=ORF Green=Tags(s)

TTTTGTAATACGACTCACTATAGGGCGGCCGGAATTCGTCGACTGGATCCGGTACCGAGGAGATCTGCC
 GCC**CGCATCGCC**

ATGACTGGAAGGGCTTAGGTGAGGATACCGAAGACCGATGGGGAGCTGGCGCCTTGGGCCCTGCGGGC
 GGAGCGCCTGAAAGGTGGAGGTTGTGTTGGGAGGCCGAGGCAGGAGGATCACGAGGTCAAGAGATCGA
 GACCATCTGGCCAACATGGAAACCTCTCTGAGGTCTGGTCAGATTCCAACCCTGGACAGCAGTGAACAC
 AACCTTTCCCTGAGCCACTGGAATTGGACAGAATGCCCCATTCTCTCTGATCTCCATTCTCATGTGT
 GGTGTCACCCAGAAGAGGAGGAAAGAATGCATGATGAACCTTCTACAAGCAGTATCCAAGGGGCCGGTAT
 GTTCAGGGATGTTCCATAGACTTCTCTCAAGAGGAATGGGAATGCCTGGACGCTGATCAGATGAATTTA
 TACAAAGAAGTGTGTTGGAGAATTCAGCAACCTGGTTTCAGTGGGACTTTCCAATTCTAAGCCAGCTG
 TGATCTCCTTATTGGAACAAGGAAAAGAGCCCTGGATGGTTGATAGAGAGCTGACTAGAGGCCTGTGTT
 AGATCTGGAATCAATGTGTGAGACAAAATATTATCTCTAAAGAAGAGACATTTTCAGTCAAGTAATAATT
 ACCCGTGAAGACATGTCTACTTTTATTCAGCCACATTTCTTATTCACCTCAAAAAACTATGAGTGAAG
 AGAAACCATGGGAATGTAAAGATATGTGGAAGACCTTTAATCAAAACTCACAAATTTATCCAACATCAGAG
 AATTCATTTTGGTGAAAAACTATGAATCTAAGGAGTATGGGAAGTCTTTAGTCGTGGCTCACTCGTT
 ACTCGACATCAGAGGATTCACACTGGTAAAAACCCTATGAATGTAAGGAATGTGGCAAGGCTTTTAGTT
 GTAGTTCATATTTTTCTCAACATCAGAGGATTCACACTGGTGAGAAACCCTATGAATGTAAGGAATGTGG
 AAAAGCCTTTAAGTATTGCTCAAACCTAATGATCATCAGAGAATTCACACTGGTGAGAAACCCTATGAA
 TGTAAGTATGTGAAAAGCCTTTACTAAAAGTTCACAACCTTTTCTACATCTGAGAATTCATACTGGTG
 AGAAACCTTATGAATGTAAGAATGTGGAAAGCCTTTACTCAACACTCAAGGCTTATTCAGCATCAGAG
 AATGCATCTGGTGAGAAACCTTATGAATGTAAGCAGTGTGGAAAGCCTTTAATAGTGCCTCAACACTT
 ACTAACCATCACAGAATTCATGCTGGTGAGAAGCTCTATGAATGTGAAGAATGTAGAAAGCCTTTATTC
 AGAGCTCAGAACTTATTCACATCAGAGAATCCATACAGATGAAAAACCATATGAATGTAATGAATGTGG
 GAAGGCCTTTAATAAAGGCTCAAATCTTACTCGACATCAGAGAATTCACACTGGTGAGAAACCCTATGAC
 TGTAAGGAATGTGGAAGGCTTTTGGTAGTCGCTCGACCTATTCGCCATGAGGGAATTCATACTGGT

ACGCGTACGCGGCCGCTCGAGCAGAAACTCATCTCAGAAGAGGATCTGGCAGCAAATGATATCTGGATT
 ACAAGGATGACGACGATAAGGTTTAA

Protein Sequence:

>RC230209 representing NM_001171979
 Red=Cloning site Green=Tags(s)

MTGKGLGEDTEDRWGAGALGPCGRSGLKGGCVWEAEAGGSRGQEIETILANMETSLSRSGQIPTLDSSEH
 NLSPEPLELDRMPHSPLISIPHVWCHPEEEERMHDELLQAVSKGPVMFRDVSIDFSQEEWECLDADQMNL
 YKEVMLENFNSLVSVGLSNSKPAVISLLEQGKEPMMVDRELTRGLCSDLESMCETKILSLKKRHSQVII
 TREDMSTFIQPTFLIPPQKTMSEKPEWCKICGKTFNQNSQFIQHQRIFHGEKHYESKEYGKSFSRGSV
 TRHQRITHTGKPYECKEKGAFSCSSYFSQHQRITHTGEKPYECKEKGAFKYSNLNDHQRITHTGEKPYE
 CKVCGKAFTKSSQLFLHLRIHTGEKPYECKEKGAFQHSRLIQHQMHTGEKPYECKQCGKAFNSASTL
 TNHHRIHAGEKLYECECRKAFIQSSELIQHQRITHTDEKPYECNECGKAFNKGSNLTRHQRITHTGEKPYD
 CKECGKAFGSRSDLIRHEGIHTG

TRTRPLEQKLISEEDLAANDILDYKDDDDKV

Chromatograms:

https://cdn.origene.com/chromatograms/mk8064_e01.zip

Restriction Sites:

Sgfl-MluI

Cloning Scheme:


ACCN: NM_001171979

ORF Size: 1539 bp

OTI Disclaimer: The molecular sequence of this clone aligns with the gene accession number as a point of reference only. However, individual transcript sequences of the same gene can differ through naturally occurring variations (e.g. polymorphisms), each with its own valid existence. This clone is substantially in agreement with the reference, but a complete review of all prevailing variants is recommended prior to use. [More info](#)

OTI Annotation: This clone was engineered to express the complete ORF with an expression tag. Expression varies depending on the nature of the gene.

Components: The ORF clone is ion-exchange column purified and shipped in a 2D barcoded Matrix tube containing 10ug of transfection-ready, dried plasmid DNA (reconstitute with 100 ul of water).

- Reconstitution Method:**
1. Centrifuge at 5,000xg for 5min.
 2. Carefully open the tube and add 100ul of sterile water to dissolve the DNA.
 3. Close the tube and incubate for 10 minutes at room temperature.
 4. Briefly vortex the tube and then do a quick spin (less than 5000xg) to concentrate the liquid at the bottom.
 5. Store the suspended plasmid at -20°C. The DNA is stable for at least one year from date of shipping when stored at -20°C.

RefSeq: [NM_001171979.2](#)

RefSeq ORF: 1542 bp

Locus ID: 374899

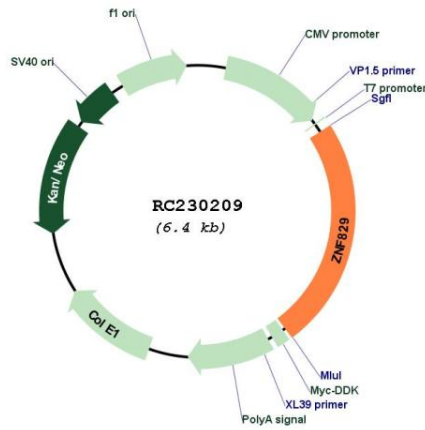
UniProt ID: [Q3KNS6](#)

Cytogenetics: 19q13.12

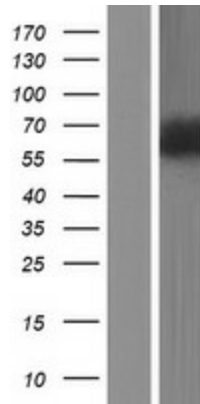
MW: 59 kDa

Gene Summary: May be involved in transcriptional regulation.[UniProtKB/Swiss-Prot Function]

Product images:



Circular map for RC230209



Western blot validation of overexpression lysate (Cat# [LY433209]) using anti-DDK antibody (Cat# [TA50011-100]). Left: Cell lysates from untransfected HEK293T cells; Right: Cell lysates from HEK293T cells transfected with RC230209 using transfection reagent MegaTran 2.0 (Cat# [TT210002]).