

Product datasheet for **RC230206**

PIGT (NM_001184729) Human Tagged ORF Clone

Product data:

Product Type:	Expression Plasmids
Product Name:	PIGT (NM_001184729) Human Tagged ORF Clone
Tag:	Myc-DDK
Symbol:	PIGT
Synonyms:	CGI-06; MCAHS3; NDAP; PNH2
Mammalian Cell Selection:	Neomycin
Vector:	pCMV6-Entry (PS100001)
E. coli Selection:	Kanamycin (25 ug/mL)



[View online »](#)

ORF Nucleotide
Sequence:

>RC230206 representing NM_001184729
Red=Cloning site Blue=ORF Green=Tags(s)

TTTTGTAATACGACTCACTATAGGGCGGCCGGAATTCGTCGACTGGATCCGGTACCGAGGAGATCTGCC
GCCCGCATCGCC

ATGGCGGCGGCTATGCCGCTTGTCTGCTCGTCTGTGCTCCTGGGGCCCGCGGCTGGTGCCTTGACG
AACCCACGCGACAGCCTGCGGGAGGAATTGTCATCACCCCGTGCCTTCCGGGGACGTAGCCGCCAC
ATTCCAGTTCCGCACGCGCTGGGATTCCGAGCTTCAGCGGGAAGGAGTGTCCATTACAGGCTCTTTCCC
AAAGCCCTGGGGCAGCTGATCTCCAAGTATTCTACGGGAGCTGCACCTGTCATTACACAAAGGCTTTT
GGAGGACCCGATACTGGGGGCCACCTTCTGCAGGCCCATCAGGTGCAGAGCTGGGCTGGTTCCA
AGACACTGCTACTGATGTGGATAAATCTTGAAGGAGCTCAGTAATGTCCTCTCAGGGATCTTCTGCGCC
TCTCTCAACTTCGACTCCACCAACACAGTCACTCCCCTGCCTCTCAAACCCCTGGGCTGGCCA
ATGACACTGACCACTACTTTCTGCGCTATGCTGTGCTGCCGCGGAGGTGGTCTGCACCGAAAACCTCAC
CCCCTGGAAGAAGCTCTTGCCTGTAGTCCAAGGAGGCTCTCTGTGCTGCTGAAGGCAGATCGTTG
TTCACACCCAGCTACCCTCCCAGGCAGTGCATATCCGCCCTGTTGCAGAAATGCACGCTGTACTAGCA
TCTCCTGGGAGCTGAGGCAGACCCTGTCAGTTGATTTGATGCCTTCATACGGGGCAGGAAAAGAAAGA
CTGGTCCCCTTTCCGGATGTTCTCCCGAACCTCACGGAGCCCTGCCCTTGGCTTCCAGAGCCGAGTC
TATGTGGACATCACCACTACAACCAGGACAACGAGACATTAGAGGTGCACCCACCCCGACCACTACAT
ATCAGGACGTATCCTAGGCACTCGAAGACCTATGCCATCTATGACTTGCTTGACACCGCCATGATCAA
CAACTCTGAAACCTCAACATCCAGTCAAGTGAAGAGACCCCAAGAGAATGGTTACATCCACTACCAG
CCTGCCAGGACCGCTGCAACCCACCTCCTGGAGATGCTGATTCAGCTGCCGCAACTCAGTACCA
AGGTTTCCATCCAGTTTGAGCGGCGCTGCTGAAGTGGACCGAGTACACGCCAGATCCTAACCATGGCTT
CTATGTCAGCCCATCTGTCTCAGCGCCCTTGTGCCAGCATGGTAGCAGCCAAGCCAGTGGACTGGGAA
GAGAGTCCCCTCTCAACAGCCTGTTCCAGTCTCTGATGGCTCTAACTACTTTGTGCGGCTCTACACGG
AGCCGCTGCTGGTGAACCTGCCGACACCGGACTTCAGCATGCCCTACAACGTGATCTGCCTCACGTGCAC
TGTGGTGGCCGTGTGCTATGGCTCCTTCTACAATCTCCTCACCGAACCTCCACATCGAGGAGCCCGC
ACAGGTGGCTGGCAAGCGGCTGGCAACCTTATCCGGCGGCCGAGGTGTCCCCCACTC

ACGCGTACGCGGCCGCTCGAGCAGAACTCATCTCAGAAGAGGATCTGGCAGCAAATGATATCCTGGATT
ACAAGGATGACGACGATAAGGTTTAA

Protein Sequence:

>RC230206 representing NM_001184729
Red=Cloning site Green=Tags(s)

MAAAMPLALLVLLLLGPGGWCLAEPDRSLREELVITPLPSGDVAATFQFRTRWDELQREGVSHYRLF
KALGQLISKYSLRELHLSFTQGFWRTRYWGPFLQAPSGAELWVWFQDTVTDVDSWKELSNVLSGIFCA
SLNFIIDSTNTVPTASFKPLGLANDTDHYFLRYAVLPREVVCTENLTPWKLLPCSSKAGLSVLLKADRL
FHTSYHSQAVHIRPVCNRARCTISWELRQTLVVFDFAITGQKKDWSLFRMF SRTLTEPCPLASESRV
YVDITTYNQDNETLEVHPPPTTTYQDVILGTRKTYAIYDLLDTAMINNSRNLNIQLKWRPPENGYIHYQ
PAQDRQLPHLLEMLIQLPANSVTKVSIQFERALLKWEYTPDPNHGFYVSPSVLSALVPSMVAAPVDWE
ESPLFNSLFPVSDGSNYFVRLYTEPLL VNLPTPDFSMPYNVICLTCTVAVCYGSFYNLLTRTFHIEEPR
TGGLAKRLANLIRRARGVPPL

TRTRPLEQKLI SEEDLAANDILDYKDDDDKV

Chromatograms:

https://cdn.origene.com/chromatograms/mk8064_d05.zip

Restriction Sites:

SgfI-MluI

Cloning Scheme:


ACCN: NM_001184729

ORF Size: 1533 bp

OTI Disclaimer: The molecular sequence of this clone aligns with the gene accession number as a point of reference only. However, individual transcript sequences of the same gene can differ through naturally occurring variations (e.g. polymorphisms), each with its own valid existence. This clone is substantially in agreement with the reference, but a complete review of all prevailing variants is recommended prior to use. [More info](#)

OTI Annotation: This clone was engineered to express the complete ORF with an expression tag. Expression varies depending on the nature of the gene.

Components: The ORF clone is ion-exchange column purified and shipped in a 2D barcoded Matrix tube containing 10ug of transfection-ready, dried plasmid DNA (reconstitute with 100 ul of water).

- Reconstitution Method:**
1. Centrifuge at 5,000xg for 5min.
 2. Carefully open the tube and add 100ul of sterile water to dissolve the DNA.
 3. Close the tube and incubate for 10 minutes at room temperature.
 4. Briefly vortex the tube and then do a quick spin (less than 5000xg) to concentrate the liquid at the bottom.
 5. Store the suspended plasmid at -20°C. The DNA is stable for at least one year from date of shipping when stored at -20°C.

RefSeq: [NM_001184729.3](#)

RefSeq ORF: 1536 bp

Locus ID: 51604

UniProt ID: [Q969N2](#)

Cytogenetics: 20q13.12

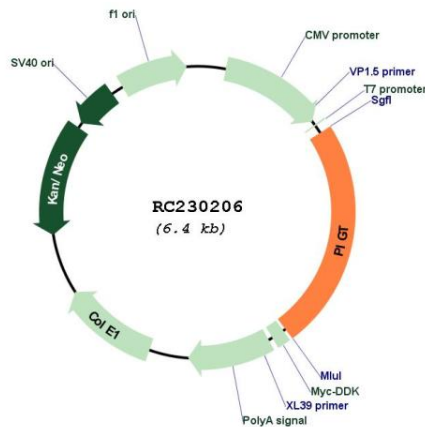
Protein Families: Transmembrane

Protein Pathways: Glycosylphosphatidylinositol(GPI)-anchor biosynthesis, Metabolic pathways

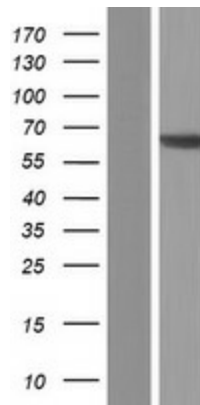
MW: 58.4 kDa

Gene Summary: This gene encodes a protein that is involved in glycosylphosphatidylinositol (GPI)-anchor biosynthesis. The GPI-anchor is a glycolipid found on many blood cells and serves to anchor proteins to the cell surface. This protein is an essential component of the multisubunit enzyme, GPI transamidase. GPI transamidase mediates GPI anchoring in the endoplasmic reticulum, by catalyzing the transfer of fully assembled GPI units to proteins. Alternatively spliced transcript variants encoding multiple isoforms have been observed for this gene. [provided by RefSeq, May 2012]

Product images:



Circular map for RC230206



Western blot validation of overexpression lysate (Cat# [LY433206]) using anti-DDK antibody (Cat# [TA50011-100]). Left: Cell lysates from untransfected HEK293T cells; Right: Cell lysates from HEK293T cells transfected with RC230206 using transfection reagent MegaTran 2.0 (Cat# [TT210002]).