

Product datasheet for **RC230205**

DGCR2 (NM_001173533) Human Tagged ORF Clone

Product data:

Product Type:	Expression Plasmids
Product Name:	DGCR2 (NM_001173533) Human Tagged ORF Clone
Tag:	Myc-DDK
Symbol:	DGCR2
Synonyms:	DGS-C; IDD; LAN; SEZ-12
Mammalian Cell Selection:	Neomycin
Vector:	pCMV6-Entry (PS100001)
E. coli Selection:	Kanamycin (25 ug/mL)



[View online »](#)

ORF Nucleotide Sequence:

>RC230205 representing NM_001173533
 Red=Cloning site Blue=ORF Green=Tags(s)

TTTTGTAATACGACTCACTATAGGGCGGCCGGAATTCGTGACTGGATCCGGTACCGAGGAGATCTGCC
 GCC**CGGATCGCC**

ATGGTGCCCAAGGCAGACAGCGGCCCTTCTGCTGCTCTTCTGCTCGTCTACTGTACCGAGCCG
 TCGCGCCAGAAGTGACCGGGGAGGTGCGTCTCATCATGGGAAGGAGGCTGTGGATCCGCGCAGGGGCG
 GGCCAGAGGAGGCGACCTTCGCACTTCCACGCGTGAACGTGGCGCAGCCCGTTTCGCTTCAAGCAGTTTC
 CTAGGGAAGTGCCCGACAGGGTGGCACCCTACGAAGGCAGGCCAGCTGCTACCGGGTCTACCTGAGCG
 GGGAGAAGTACTGGGATGCCGCGCAGACCTGCCAGCGCCTGAATGGCTCTCTCGCCACCTTCTCCACTGA
 CCAGGAGCTGCGCTTTGCTGCGCCAGGAATGGGACCAGCCGAGCGGAGCTTTGGTTGGAAGGACCAG
 CGCAAGTTGTGGTTGGCTATCAGTATGTTATCACTGGCCGGAACCGCTCCTTGAAGGTCGCTGGGAGG
 TGGCATTCAAAGGCTCTCAGAGGTGTTCTGCCCCAGACCCCATCTTGCCTCGGCCATGTCTGAGAA
 CGACAACGTGTTCTGTGCCAGCTTCAGTGCTTCCATTTCCACCCCTGCGGCACCAGCCTCCACAGC
 TGGCAGCCGAGAGCTGCTACGAGAAGTCTTATTCTGTGTAAGAAGTCAAACATGTGTTGACATCA
 AGGACAACGTGGTGGATGAAGGGTCTACTTCACCCCTAAGGGGGACGCCCATGCCTGAGCTGCACCTG
 CCATGGAGGGGAGCTGAGATGTGTGTGGCTGCTCTGTGAGAGGCCAGGGCTGCCAACAGTACCGC
 AAGGACCCCAAAGAGTGTGCAAGTTATGTGTCTGGACCCAGATGGCAACAGTCTGTTTACTCCATGG
 CCAGCGGGATGCGCCTGGTGTGCTGAGTGCATCTCTCTCTCTCATCTGTCACTGCTGCTTTCATGGT
 CCACCGGCTGCCAGCGCGCCGGGAGCGCATCGAGTCCCTGATTGGAGCAAATTGCACCACTTCAAC
 CTGGCCGAGGATCCCTGGCTTTGATTACGGCCAGCGGGTTGGCACGGGCTCACGCCGCTGCATC
 TTCTGACGACGGAGAGGGTGGACTTTCCATTTCCACGACCCTCCACCTCCCTACACGGCATAACAAGT
 CCGGACATCGGCCAGCCGACGACCCTCCGCCGCTACGAGGCTCCATCCACCCGGACAGTGTGTTTC
 TATGACCTGCAGACGATGATGCTTTTGTGAGCTGTGGAGTGCAGCTGCCAGCCCTGGGATGGTGGGA
 GTGAAGGTGCATTACTCCGGCGCTGGAGCAGCTCTGCCACTGCGGGGGCTCTCTGGCAGACCTGGA
 AGACTCTGCCAGCAGCAGCGCCCTGCTGTCGCCCTGACCTGCCAGAGCGGGAGCACCCAGCT
 GCAGAGGCACTGCCAGGGGTGGCCGCCACAGCCGAGCTCCCTCAATACTGTGGT

ACGCGTACGCGGCCGCTCGAGCAGAACTCATCTCAGAAGAGGATCTGGCAGCAAATGATATCTGGATT
 ACAAGGATGACGACGATAAGGTTTAA

Protein Sequence:

>RC230205 representing NM_001173533
 Red=Cloning site Green=Tags(s)

MVPKADSGAFLLLFLLVLTVEPLRPEVTGEVRPHHGKEAVDPRQGRARGGDP SHFHAVNVAQPVR FSSF
 LGKCPTGWHHYEGTASCYRVYLSGENYWDAAQTCQRLNGLATFSTDQELRFVLAQEWDPERSFGWKDQ
 RKLWVGYYVITGRNRSLEGRWEVAFKGSSEVFLPPDPIFASAMSENDNVFCAQLQCFHFPTLRHHDLS
 WHAESCYEKSSF LCKRSQTCVDIKDNVDEGFYTPKGDDPCL SCTCHGGEPEMCVAALCERPQGCQYR
 KDPKECKFMCLDPDGNLFDMSMGMRLVVSICSSFLILSLLLFMVHRLRQRRRERIESLIGANLHFN
 LGRRIPGFDYGPDPGTGLTPLHLSDDGEGTFHFHDP PPPYAYKYPD IGPDDPPPPYEASIHPSV F
 YDPADDDAFEPVEVSLPAPGDGGSEGALLRRLEQLPTAGASLADLEDSADSSSALLVPPDPAQSGSTPA
 AEALPGGGRHSRSSLNTVV

TRTRPLEQKLISEEDLAANDILDYKDDDDKV

Chromatograms:

https://cdn.origene.com/chromatograms/mk8064_c04.zip

Restriction Sites:

SgfI-MluI

Cloning Scheme:


ACCN: NM_001173533

ORF Size: 1527 bp

OTI Disclaimer: The molecular sequence of this clone aligns with the gene accession number as a point of reference only. However, individual transcript sequences of the same gene can differ through naturally occurring variations (e.g. polymorphisms), each with its own valid existence. This clone is substantially in agreement with the reference, but a complete review of all prevailing variants is recommended prior to use. [More info](#)

OTI Annotation: This clone was engineered to express the complete ORF with an expression tag. Expression varies depending on the nature of the gene.

Components: The ORF clone is ion-exchange column purified and shipped in a 2D barcoded Matrix tube containing 10ug of transfection-ready, dried plasmid DNA (reconstitute with 100 ul of water).

Reconstitution Method:

1. Centrifuge at 5,000xg for 5min.
2. Carefully open the tube and add 100ul of sterile water to dissolve the DNA.
3. Close the tube and incubate for 10 minutes at room temperature.
4. Briefly vortex the tube and then do a quick spin (less than 5000xg) to concentrate the liquid at the bottom.
5. Store the suspended plasmid at -20°C. The DNA is stable for at least one year from date of shipping when stored at -20°C.

RefSeq: [NM_001173533.1](#), [NP_001167004.1](#)

RefSeq ORF: 1530 bp

Locus ID: 9993

UniProt ID: [P98153](#)

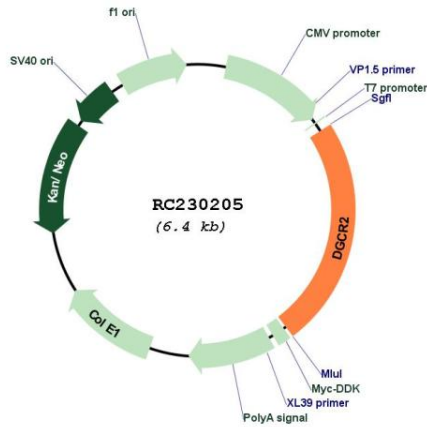
Cytogenetics: 22q11.21

Protein Families: Druggable Genome, Transmembrane

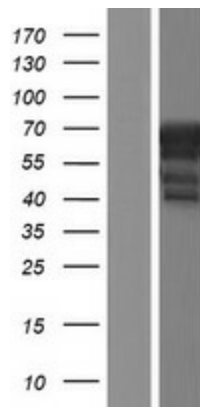
MW: 56.7 kDa

Gene Summary: Deletions of the 22q11.2 have been associated with a wide range of developmental defects (notably DiGeorge syndrome, velocardiofacial syndrome, conotruncal anomaly face syndrome and isolated conotruncal cardiac defects) classified under the acronym CATCH 22. The DGCR2 gene encodes a novel putative adhesion receptor protein, which could play a role in neural crest cells migration, a process which has been proposed to be altered in DiGeorge syndrome. Alternative splicing results in multiple transcript variants.[provided by RefSeq, May 2010]

Product images:



Circular map for RC230205



Western blot validation of overexpression lysate (Cat# [LY433205]) using anti-DDK antibody (Cat# [TA50011-100]). Left: Cell lysates from untransfected HEK293T cells; Right: Cell lysates from HEK293T cells transfected with RC230205 using transfection reagent MegaTran 2.0 (Cat# [TT210002]).