

## Product datasheet for **RC230201**

### **BANP (NM\_001173542) Human Tagged ORF Clone**

#### **Product data:**

|                           |  |
|---------------------------|--|
| Product Type:             | Expression Plasmids                        |
| Product Name:             | BANP (NM_001173542) Human Tagged ORF Clone |
| Tag:                      | Myc-DDK                                    |
| Symbol:                   | BANP                                       |
| Synonyms:                 | BEND1; SMAR1; SMARBP1                      |
| Mammalian Cell Selection: | Neomycin                                   |
| Vector:                   | pCMV6-Entry (PS100001)                     |
| E. coli Selection:        | Kanamycin (25 ug/mL)                       |



[View online »](#)

**ORF Nucleotide Sequence:**

>RC230201 representing NM\_001173542  
 Red=Cloning site Blue=ORF Green=Tags(s)

TTTTGTAATACGACTCACTATAGGGCGGCCGGAATTCGTCGACTGGATCCGGTACCGAGGAGATCTGCC  
 GCC**CGCATCGCC**

ATGATGTCGGAACACGACCTGGCCGATGTGGTTAGATTGCAGTGAAGACCTGAGCCCTGACCACCCAG  
 TTGTTTTGGAGAATCATGTAGTGACAGATGAAGACGAACCTGCTTTGAAACGCCAGCGACTAGAAATCAA  
 TTGCCAGGATCCATCTATAAAGTCATTCTGTATTCCATCAACCAGACAATCTGCTTGCGGTTGGATAGC  
 ATTGAAGCCAAATTGCAAGCCCTGGAGGCTACTTGTAAATCCTTAGAAGAAAAGCTGGATCTGGTCACGA  
 ACAAGCAGCACAGCCCCATCCAGGTCCTCATGGTGGCCGGCTCCCCTCTCGGGGCAACCCAGACGTGCAA  
 CAAAGTGCATGCGTCTCCCCAGACTACAGTAATACTCAACAATGATCGGCAGAACGCCATTGTAGCC  
 AAGATGGAAGACCCCTTGAGCAACAGGGCACCGGATTCCCTGGAAAATGTCATTAGCAACGCTGTGCCTG  
 GCGCTCGGCAGAACACCATTGTGGTGAAGGTGCCGGGCAAGAAGACAGCCACCAGGACGGGGAGAG  
 CGCTCGGAGGCCAGCGACTCTGTGTCCAGCTGTGGGCAGCGGGCAGTCAGAGCATCGGGAGCAACGTC  
 ACGCTCATCACCTGAACTCGGAAGAGGACTACCCCAATGGCACCTGGCTGGGCGACGAGAACAACCCCG  
 AGATGCGGGTACGCTGCGCCATCATCCCCTCCGACATGCTGCACATCAGCACTGCGCCACGCGCCGA  
 GAAGATGGCGCTCACGCTGCTGGACTACCTCTCCACCGCAGGTCAGGCTGTGTCCAACCTCTCGGGG  
 CAGGGCAAGCACGGGAAGAAGCAGCTGGACCCGCTCACCATCTACGGCATCCGGTGTACCTTTTCTATA  
 AATTTGGCATCACAGAATCCGACTGGTACCGAATCAAGCAGAGCATCGACTCCAAGTGCCGACGGCGTG  
 GCGGGCAAGCAGCGGGCCAGAGCCTGGCGGTCAAGAGCTTCTCGCGGAGAACGCCAACTCGTCTCTCC  
 TACTGCCCTTTCAGAGCCGATGATGAGCACCCACCTCTGCCAGCGAGCTCCCGCAGCCACAGCCGACG  
 CGCAGCCCTGCCTACGCGCTGGCCACGACAGCAGGTCAGATCCACCAGATCGGAGAAGACGGACA  
 GGTGCAAGTAATCCACAGGGACACCTCCACATCGCCAGGTGCCGAGGGGAGCAAGTCCAGATCACG  
 CAGGACAGCGAGGGCAACCTCCAGATCCATCACGTGGGGCAGGACGGTCAAGTGTGCAGGGTGCACAGC  
 TGATCGCCGTGGCCTCTCGGACCCCGCGGGCGGGCGTGGATGGGTGCGCCACTCCAGGGCAGCGACAT  
 CCAGGTTTCAGTACGTGCAGCTGGCGCCAGTGAGTGACCACAGCGCCGGGGCACAGACGGCCGAAGCCCTG  
 CAGCCACGCTACAGCCGGAGATGCAGCTCGAGCACGGGGCCATCCAGATTAG

**ACGCGT**ACGCGGGCCGCTCGAGCAGAAACTCATCTCAGAAGAGGATCTGGCAGCAAATGATATCTGGATT  
 ACAAGGATGACGACGATAAGGTTTAA

**Protein Sequence:**

>RC230201 representing NM\_001173542  
 Red=Cloning site Green=Tags(s)

MMSEHDLADVQIAVEDLSPDHPVVLENHVVTDEDEPALKRQRLEINCQDPSIKSFLYSINQTI CLR LDS  
 IEAKLQALEATCKSLEEKLDLVTNKQHSP IQVPMVAGSPLGATQTCNKVRCVVPQT TVILNDRQNAIVA  
 KMEDPLSNRAPDSLENVISNAVPGRRQNTIVVKVPGQEDSHHEDGESGSEASDSVSSCGQAGS QSIGSNV  
 TLITLNSEEDYPNGTWLGDENNPENRVRCAIIPSDMLHISTNCR TAEKMAL TLLDYL FHVREVQAVSNL SG  
 QGKHGKKQLDPLTIYGIRCHLFYKFGITESDWYRIKQSIDSKRTAWRRKQRGQSLAVKSF SR RTPNSSS  
 YCPSEPMSTPPPASELPQPQPQALHYALANAQQVQIQHIGEDGQVQVIPQGH L HIAQVPQGEVQVIT  
 QDSEGNLQIHVHGQDQVLQGAQLI AVASSDPA AAGVDGSPLQGS DIQVYVQLAPVSDHTAGAQTAEAL  
 QPTLQPEMQLEHGAIQIQ

**TRTRPLEQKLI**SEEDLAANDILDYKDDDDKV

**Chromatograms:**

[https://cdn.origene.com/chromatograms/mk8064\\_b07.zip](https://cdn.origene.com/chromatograms/mk8064_b07.zip)

**Restriction Sites:**

SgfI-MluI

## Cloning Scheme:



ACCN: NM\_001173542

ORF Size: 1524 bp

OTI Disclaimer: The molecular sequence of this clone aligns with the gene accession number as a point of reference only. However, individual transcript sequences of the same gene can differ through naturally occurring variations (e.g. polymorphisms), each with its own valid existence. This clone is substantially in agreement with the reference, but a complete review of all prevailing variants is recommended prior to use. [More info](#)

OTI Annotation: This clone was engineered to express the complete ORF with an expression tag. Expression varies depending on the nature of the gene.

Components: The ORF clone is ion-exchange column purified and shipped in a 2D barcoded Matrix tube containing 10ug of transfection-ready, dried plasmid DNA (reconstitute with 100 ul of water).

Reconstitution Method:

1. Centrifuge at 5,000xg for 5min.
2. Carefully open the tube and add 100ul of sterile water to dissolve the DNA.
3. Close the tube and incubate for 10 minutes at room temperature.
4. Briefly vortex the tube and then do a quick spin (less than 5000xg) to concentrate the liquid at the bottom.
5. Store the suspended plasmid at -20°C. The DNA is stable for at least one year from date of shipping when stored at -20°C.

RefSeq: [NM\\_001173542.1](#), [NP\\_001167013.1](#)

RefSeq ORF: 1527 bp

Locus ID: 54971

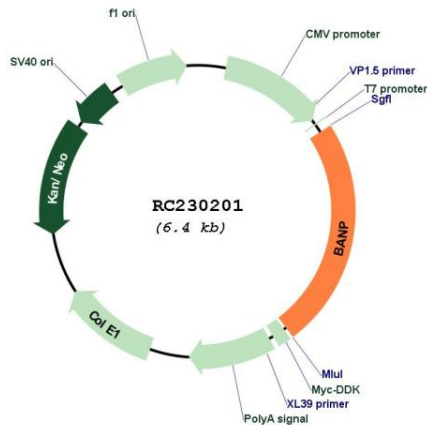
UniProt ID: [Q8N9N5](#)

Cytogenetics: 16q24.2

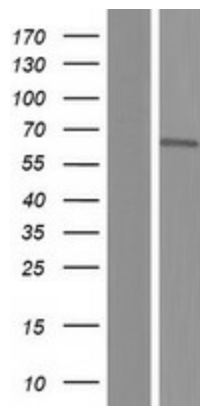
MW: 56 kDa

**Gene Summary:**

This gene encodes a protein that binds to matrix attachment regions. The protein forms a complex with p53 and negatively regulates p53 transcription, and functions as a tumor suppressor and cell cycle regulator. Multiple transcript variants encoding different isoforms have been found for this gene. [provided by RefSeq, Mar 2010]

**Product images:**


Circular map for RC230201



Western blot validation of overexpression lysate (Cat# [LY433201]) using anti-DDK antibody (Cat# [TA50011-100]). Left: Cell lysates from untransfected HEK293T cells; Right: Cell lysates from HEK293T cells transfected with RC230201 using transfection reagent MegaTran 2.0 (Cat# [TT210002]).