

Product datasheet for **RC230199**

DGCR2 (NM_001173534) Human Tagged ORF Clone

Product data:

Product Type:	Expression Plasmids
Product Name:	DGCR2 (NM_001173534) Human Tagged ORF Clone
Tag:	Myc-DDK
Symbol:	DGCR2
Synonyms:	DGS-C; IDD; LAN; SEZ-12
Mammalian Cell Selection:	Neomycin
Vector:	pCMV6-Entry (PS100001)
E. coli Selection:	Kanamycin (25 ug/mL)



[View online »](#)

ORF Nucleotide Sequence:

>RC230199 representing NM_001173534
 Red=Cloning site Blue=ORF Green=Tags(s)

TTTTGTAATACGACTCACTATAGGGCGGCCGGAATTCGTCGACTGGATCCGGTACCGAGGAGATCTGCC
 GCC**CGGATCGCC**

ATGGTGCCCAAGGCAGACAGCGGCCCTTCTGCTGCTCTTCTGCTCGTCTACTGTACCGAGCCG
 TCGCGCCAGAAGTGACCGGGGAGGTGCGTCCTCATCATGGGAAGGAGGCTGTGGATCCGCGCAGGGGCG
 GGCCAGAGGAGCGACCTTCGCACTTCCACGCGTGAACGTGGCGCAGCCCGTTTCGCTTCAAGCAGAA
 TGCCCGACAGGGTGGCACCCTACGAAGGCAGGCCAGCTGTACCGGGTCTACCTGAGCGGGGAGAACT
 ACTGGGATGCCGCGCAGACCTGCCAGCGCTGAATGGCTCTCTCGCCACCTTCTCCACTGACCAGGAGCT
 GCGCTTTGTCTGGCCAGGAATGGACCAGCCGAGCGGAGCTTTGGTTGGAAGGACCAGCGCAAGTTG
 TGGGTTGGCTATCAGTATGTTATCACTGGCCGGAACCGCTCCTTGAAGGTCGCTGGGAGGTGGCATTCA
 AAGGCTCTCAGAGGTGTTCTGCCCCAGACCCCATCTTGCCTCGCCATGTCTGAGAACGACAACGT
 GTTCTGTGCCAGCTTCACTGCTCCATTTCCACCCTGCGGCACCACGACCTCCACAGCTGGCAGGCC
 GAGAGCTGCTACGAGAAGTCTTCAATTTCTGTGTAAAAGAAGTCAAACATGTGTTGACATCAAGGACAACG
 TGGTGGATGAAGGTTCTACTTCAACCCCTAAGGGGACGACCCATGCCTGAGCTGCACCTGCCATGGAGG
 GGAGCCTGAGATGTGTGGTCTCTCTGTGAGAGGCCCGAGGGCTGCCAACAGTACCGCAAGGACCC
 AAAGAGTGCTGCAAGTTCATGTGTCTGGACCCAGATGGCAACAGTCTGTTTGACTCCATGGCCAGCGGGA
 TGCGCCTGGTCTGAGCTGCATCTCCTCTTCTCATCTGTCTACTGTCTTTCATGGTCCACCGGCT
 GCGCCAGCGCGCCGGGAGCGCATCGAGTCCCTGATTGGAGCAAACCTGCACCACTTCAACCTCGGCCG
 AGGATCCCTGGCTTTGATTACGGCCAGACGGGTTTGGCAGGGCCTCACGCCGCTGCATCTTTCTGAGC
 ACGGAGAGGGTGGGACTTCCATTTCCACGACCCCTCCACCTCCCTACACGGCATACAAGTACCCGGACAT
 CGGCCAGCCCGACGACCTCCGCGCCCTACGAGGCTCCATCCACCCGGACAGTGTGTTCTATGACCCT
 GCAGACGATGATGCTTTGAGCCTGTGGAGTCAAGCTGCCAGCCCTGGGGATGGTGGGAGTGAAGGTG
 CATTACTCGGCCCTGGAGCAGCTCTGCCACTGCGGGGCTCTCTGGCAGACCTGGAAGACTCTGC
 CGACAGCAGCAGCCCTGCTCGTGCCTGACCCTGCCAGAGCGGGAGCACCCAGCTGCAGAGGCA
 CTGCCAGGGGTGGCCGCCACAGCCGAGCTCCCTCAATACTGTGGTG

ACGGTACGCGGCCGCTCGAGCAGAACTCATCTCAGAAGAGGATCTGGCAGCAATGATATCTGGATT
ACAAGGATGACGACGATAAGGTTTAA

Protein Sequence:

>RC230199 representing NM_001173534
 Red=Cloning site Green=Tags(s)

MVPKADSGAFLLFLVLTVEPLRPEVTGEVPHHGKEAVDPRQGRARGGDP SHFHAVNVAQPVRFSRK
 CPTGWHHYEGTASCYRVYLSGENYWDAQTCQRLNGSLATFSTDQELRFVLAQEWDQPERSFGWKQQRKL
 WVGQYVITGRNRSLEGRWEVAFKGSSEVFLPPDPIFASAMSENDNVFCAQLQCFHFPTLRHHDLSWHA
 ESCYEKSSFLCKRSQTCVDIKDNVDEGFYFTPKGDDPCLSCTCHGGEPEMCVAALCERPQGCQYRKDP
 KECKFMCLDPDGNLFDMSAGMRLVVSICISSFLILSLLFMVHRLRQRRRERIESLIGANLHHFNLGR
 RIPGFYGPDPGTGLTPLHLSDDGEGGTFHFHDP PPPYAYKYPDIGQPD PPPPYEASIH PDSV FYDP
 ADDDAFEPVEVSLPAPGDGGSEGALLRRLEQPLPTAGASLADLEDSADSSALLVPPDPAQSGSTPAAEA
 LPGAHRHSRSSLNTVV

TRTRPLEQKLI SEEDLAANDILDYKDDDDKV

Chromatograms:

https://cdn.origene.com/chromatograms/mk8064_a09.zip

Restriction Sites:

Sgfl-Mlul

Cloning Scheme:


ACCN: NM_001173534

ORF Size: 1518 bp

OTI Disclaimer: The molecular sequence of this clone aligns with the gene accession number as a point of reference only. However, individual transcript sequences of the same gene can differ through naturally occurring variations (e.g. polymorphisms), each with its own valid existence. This clone is substantially in agreement with the reference, but a complete review of all prevailing variants is recommended prior to use. [More info](#)

OTI Annotation: This clone was engineered to express the complete ORF with an expression tag. Expression varies depending on the nature of the gene.

Components: The ORF clone is ion-exchange column purified and shipped in a 2D barcoded Matrix tube containing 10ug of transfection-ready, dried plasmid DNA (reconstitute with 100 ul of water).

- Reconstitution Method:**
1. Centrifuge at 5,000xg for 5min.
 2. Carefully open the tube and add 100ul of sterile water to dissolve the DNA.
 3. Close the tube and incubate for 10 minutes at room temperature.
 4. Briefly vortex the tube and then do a quick spin (less than 5000xg) to concentrate the liquid at the bottom.
 5. Store the suspended plasmid at -20°C. The DNA is stable for at least one year from date of shipping when stored at -20°C.

RefSeq: [NM_001173534.2](#)

RefSeq ORF: 1521 bp

Locus ID: 9993

UniProt ID: [P98153](#)

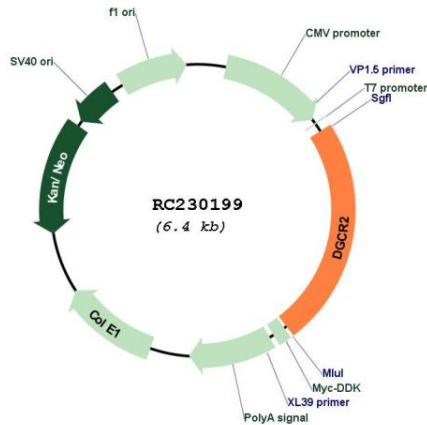
Cytogenetics: 22q11.21

Protein Families: Druggable Genome, Transmembrane

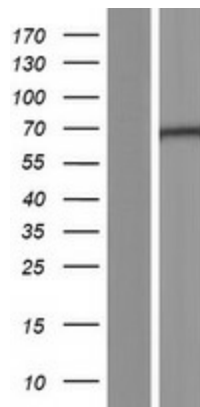
MW: 56.5 kDa

Gene Summary: Deletions of the 22q11.2 have been associated with a wide range of developmental defects (notably DiGeorge syndrome, velocardiofacial syndrome, conotruncal anomaly face syndrome and isolated conotruncal cardiac defects) classified under the acronym CATCH 22. The DGCR2 gene encodes a novel putative adhesion receptor protein, which could play a role in neural crest cells migration, a process which has been proposed to be altered in DiGeorge syndrome. Alternative splicing results in multiple transcript variants.[provided by RefSeq, May 2010]

Product images:



Circular map for RC230199



Western blot validation of overexpression lysate (Cat# [LY433199]) using anti-DDK antibody (Cat# [TA50011-100]). Left: Cell lysates from untransfected HEK293T cells; Right: Cell lysates from HEK293T cells transfected with RC230199 using transfection reagent MegaTran 2.0 (Cat# [TT210002]).