

Product datasheet for **RC230198**

HCK (NM_001172132) Human Tagged ORF Clone

Product data:

Product Type:	Expression Plasmids
Product Name:	HCK (NM_001172132) Human Tagged ORF Clone
Tag:	Myc-DDK
Symbol:	HCK
Synonyms:	JTK9; p59Hck; p61Hck
Mammalian Cell Selection:	Neomycin
Vector:	pCMV6-Entry (PS100001)
E. coli Selection:	Kanamycin (25 ug/mL)



[View online »](#)

ORF Nucleotide Sequence:

>RC230198 representing NM_001172132
 Red=Cloning site Blue=ORF Green=Tags(s)

TTTTGTAATACGACTCACTATAGGGCGGCCGGAATTCGTCGACTGGATCCGGTACCGAGGAGATCTGCC
 GCC**CGGATCGCC**

ATGATGGGGTGCATGAAGTCCAAGTTCCTCCAGGTCGGAGGCAATACATTCTCAAAAAGTAAACCAGCG
 CCAGCCACACTGCTGTGTAGCTGCCGATCCACATCCACCATCAAGCCGGGCCTAATAGCCACAA
 CAGCAACACACCAGGAATCAGGGAGGCAGGCTCTGAGGACATCATCGTGGTTGCCCTGTATGATTACGAG
 GCCATTACCACGAAGACCTCAGCTTCCAGAAGGGGACCAGATGGTGGTCTAGAGGAATCCGGGGAGT
 GGTGGAAGGCTCGATCCCTGGCCACCCGGAAGGAGGGCTACATCCCAAGCAACTATGTCGCCCGCTTGA
 CTCTCTGGAGACAGAGGAGTGGTTTTTCAAGGGCATCAGCCGGAAGGACGCAGAGCGCAACTGCTGGCT
 CCCGGCAACATGCTGGGCTCCTTCATGATCCGGGATAGCGAGACCACTAAAGGAAGCTACTCTTTGTCCG
 TCGGAGACTACGACCCTCGCAGGGAGATACCGTCAAACATTACAAGATCCGACCCTGGACAACGGGGG
 CTTCTACATATCCCCCGAAGCACCTTCAGCACTCTGCAGGAGCTGGTGGACACTACAAGAAGGGGAAC
 GACGGGCTCTGCCAGAACTGTCGGTGCCTGCATGTCTTCCAAGCCCCAGAAGCCTTGGGAGAAAGATG
 CCTGGGAGATCCCTCGGGAATCCCTCAAGCTGGAGAAGAACTTGGAGCTGGGCAGTTTGGGGAAGTCTG
 GATGGCCACCTACAACAAGCACCAAGGTGGCAGTGAAGACGATGAAGCCAGGGAGCATGTCGGTGGAG
 GCCTTCTGGCAGAGGCCAACGTGATGAAAAGTCTGCAGCATGACAAGCTGGTCAAACCTCATGCGGTGG
 TCACCAAGGAGCCCATCTACATCATCACGGAGTTCATGGCCAAAGGAAGCTTGTGGACTTTCTGAAAAG
 TGATGAGGGCAGCAAGCAGCCATTGCCAAAAGTCTGACTTCTCAGCCAGATTGCAGAAGGCATGGCC
 TTCATCGAGCAGAGGAAGTACATCCACCGAGACCTCCGAGCTGCCAACATCTTGGTCTCTGCATCCCTGG
 TGTGTAAGATTGCTGACTTTGGCTGGCCGGTTCATTGAGGACAACGAGTACACGGCTCGGGAAGGGGC
 CAAGTTCCCCATCAAGTGGACAGCTCCTGAAGCCATCAACTTTGGCTCCTTACCATCAAGTCAGAGCTC
 TGGTCTTTGGTATCCTGCTGATGGAGATCGTACCTACGGCCGGATCCCTTACCAGGGATGTCAAACC
 CTGAAGTATCGGAGCTCTGGAGCGTGGATACCGGATGCCTCGCCAGAGAACTGCCAGAGGAGCTCTA
 CAACATCATGATGCGCTGCTGAAAAACCGTCCGGAGGAGCGGCCGACCTTCAATACATCCAGAGTGTG
 CTGGATGACTTCTACACGGCCACAGAGGCCAGTACCAACAGCAGCCA

**ACGGTACGGCGCCGCTCGAGCAGAACTCATCTCAGAAGAGGATCTGGCAGCAAATGATATCCTGGATT
 ACAAGGATGACGACGATAAGGTTTAA**

Protein Sequence:

>RC230198 representing NM_001172132
 Red=Cloning site Green=Tags(s)

MMGCMKSKFLQVGGNTFSKTETSASPHCPVYVPDPTSTIKPGPNHNSNTPGIREAGSEDIIVVALYDYE
 AIHHEDLSFQKGDQMVVLEESGEWWKARSLATRKEGYIPSNYVARVDSLETEEWFVKISRKDAERQLLA
 PGNMLGSFMIRDSETTKGSYLSVRDYDPRQGDVVKHYKIRTLDNNGFYISPRSTFSTLQELVDHYKKN
 DGLCQKLSVPCMSKPKPWEKDAWEIPRESLKLEKKGAGQFGEVWMATYNKHTKVAVKTMKPGSMSVE
 AFLAEANVMKTLQHKLVKLHAVVTKEPIYIITEFMAKGSLLDFLKSDEGSKQPLPKLIDFSAQIAEGMA
 FIEQRNYIHRDLRAANILVSASLVCKIADFGLARVIEDNEYTAREGAKFPKWTAPEAINFGSFTIKSDV
 WSGILLMEIVTYGRIPYPGMSNPEVIRALERGYRMPRPENCPEELYNIMMRCWKNRPEERPTFEYIQSV
 LDDFYTATESQYQQP

TRTRPLEQKLISEEDLAANDILDYKDDDDKV

Chromatograms:

https://cdn.origene.com/chromatograms/mk8064_a08.zip

Restriction Sites:

SgfI-MluI

Cloning Scheme:


ACCN: NM_001172132

ORF Size: 1518 bp

OTI Disclaimer: The molecular sequence of this clone aligns with the gene accession number as a point of reference only. However, individual transcript sequences of the same gene can differ through naturally occurring variations (e.g. polymorphisms), each with its own valid existence. This clone is substantially in agreement with the reference, but a complete review of all prevailing variants is recommended prior to use. [More info](#)

OTI Annotation: This clone was engineered to express the complete ORF with an expression tag. Expression varies depending on the nature of the gene.

Components: The ORF clone is ion-exchange column purified and shipped in a 2D barcoded Matrix tube containing 10ug of transfection-ready, dried plasmid DNA (reconstitute with 100 ul of water).

Reconstitution Method:

1. Centrifuge at 5,000xg for 5min.
2. Carefully open the tube and add 100ul of sterile water to dissolve the DNA.
3. Close the tube and incubate for 10 minutes at room temperature.
4. Briefly vortex the tube and then do a quick spin (less than 5000xg) to concentrate the liquid at the bottom.
5. Store the suspended plasmid at -20°C. The DNA is stable for at least one year from date of shipping when stored at -20°C.

RefSeq: [NM_001172132.2](#)

RefSeq ORF: 1521 bp

Locus ID: 3055

Cytogenetics: 20q11.21

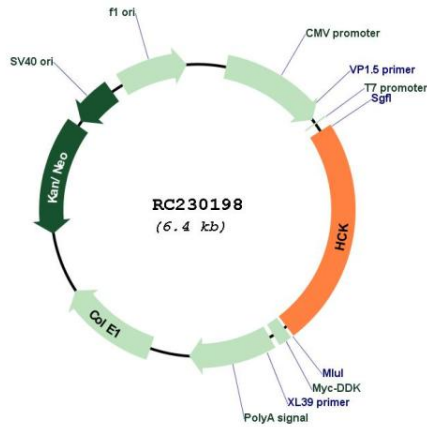
Protein Families: Druggable Genome, Protein Kinase

Protein Pathways: Chemokine signaling pathway, Fc gamma R-mediated phagocytosis

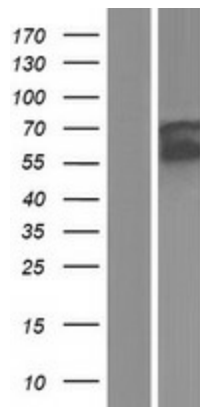
MW: 57.9 kDa

Gene Summary: The protein encoded by this gene is a member of the Src family of tyrosine kinases. This protein is primarily hemopoietic, particularly in cells of the myeloid and B-lymphoid lineages. It may help couple the Fc receptor to the activation of the respiratory burst. In addition, it may play a role in neutrophil migration and in the degranulation of neutrophils. Multiple isoforms with different subcellular distributions are produced due to both alternative splicing and the use of alternative translation initiation codons, including a non-AUG (CUG) codon. [provided by RefSeq, Feb 2010]

Product images:



Circular map for RC230198



Western blot validation of overexpression lysate (Cat# [LY433198]) using anti-DDK antibody (Cat# [TA50011-100]). Left: Cell lysates from untransfected HEK293T cells; Right: Cell lysates from HEK293T cells transfected with RC230198 using transfection reagent MegaTran 2.0 (Cat# [TT210002]).