

Product datasheet for **RC230185**

CP2c (TFCP2) (NM_001173452) Human Tagged ORF Clone

Product data:

Product Type:	Expression Plasmids
Product Name:	CP2c (TFCP2) (NM_001173452) Human Tagged ORF Clone
Tag:	Myc-DDK
Symbol:	CP2c
Synonyms:	LBP1C; LSF; LSF1D; SEF; TFCP2C
Mammalian Cell Selection:	Neomycin
Vector:	pCMV6-Entry (PS100001)
E. coli Selection:	Kanamycin (25 ug/mL)



[View online »](#)

ORF Nucleotide Sequence:

>RC230185 representing NM_001173452
 Red=Cloning site Blue=ORF Green=Tags(s)

TTTTGTAATACGACTCACTATAGGGCGGCCGGGAATTCGTCGACTGGATCCGGTACCGAGGAGATCTGCC
 GCC**CGCATCGCC**

ATGGCCTGGGCTCTGAAGCTGCCTCTGGCCGACGAAGTATTGAATCCGGTTGGTGCAGGACTTTGATG
 CTAGCCTGTCGGGATCGGCCAGGAAGTGGTGCCTATAGCATGAGTGTCTTGCATTGCC
 CATTTTTAAGCAAGAAGAGTTCGAGTTTGCCCTCTGATAATGAGAATAAAATCCTGCCTTTCAATATGTG
 CTTTGTGCTGCTACCTCTCCAGCAGTGAAGTCCATGATGAAACCCTAACGTATCTCAATCAAGGACAGT
 CTTATGAAATTCGAATGCTAGACAATAGGAACTTGGAGAAGTCCAGAAATTAATGGCAAATTTGGTAA
 GAGTATATTCCGTGTGGTGTCCATGACAGAAGGCTTCAGTACACTGAGCATCAGCAGCTAGAGGGCTGG
 AGGTGGAACCGACCTGGAGACAGAATTCCTGACATAGATATCCCGATGTCTGTGGGTATAATCGATCCTA
 GGGCTAATCCAACCACTAAATACAGTGGAGTTCCTGTGGGACCCTGCAAAGAGGACATCTGTGTTTAT
 TCAGGTGCACTGTATTAGCACAGAGTTCCTATGAGGAAACATGGTGGAGAAAAGGGGTGCCATCCGA
 GTACAAATAGATACCTTCAAGGAGAATGAAAACGGGGAATATACTGAGCACTTACACTCGGCCAGCTGCC
 AGATCAAAGTTTTCAAGCCAAAGGTGCAGACAGAAAGCAAAAAACGGATAGGGAAGAAAATGGAGAAACG
 AACACCTCATGAAAAGGAGAAATATCAGCCTTCTATGAGACAACCATACTCACAGAGTGTCTCCATGG
 CCCGAGATCACGTATGTCAATACTCCCATCACCTGGCTTCAACAGTTCATAGCAGTTTTTCTCTTG
 GGAAGGAAATGGTTCACCAAACCAGCCAGAGCCACCCCTCCAGTACAGATAACCTTACCAAC
 AACCACACCTCAGGAAGCTCAGCAGTGGTTCATCGAAATCGTTTTTCTACATTCACAAGGCTTTTACA
 AACTTCTCAGGGCAGATTTATTGAAATTAAGTAACTAGAGATGATGTGATCCAATCTGTGGCCCTGCAGT
 GAATCAGACTTTTTAATGCATTAAGGCGCGGATGGTGGTCCAAGGTTAACCTTTATGTTTGTGAGCA
 ATCACTGCAGTTGAGGGAGCAGCAACAACAGCAGCAGCAACAGCAGCAGAAAGCATGAGGATGGAGACTCA
 AATGGTACTTTCTCGTTTACCATGCTATCTATCTAGAAGAACTAACAGCTGTTGAATTGACAGAAAAA
 TTGCTCAGCTTTTTCAGCATTCCCTTGCAGATCAGCCAGATTTACAAGCAGGGGCCAACAGGAATTCA
 TGTGCTCATCAGTATGAGATGATACAGAACTTTCAGGAAGAAGCATGTTTTATTCTGGACACAATGAAA
 GAAACCAATGATAGCTATCATATCATACTGAAG

ACGCGTACGCGGCCGCTCGAGCAGAACTCATCTCAGAAGAGGATCTGGCAGCAAATGATATCTGGATT
 ACAAGGATGACGACGATAAGGTTTAA

Protein Sequence:

>RC230185 representing NM_001173452
 Red=Cloning site Green=Tags(s)

MAWALKLPLADEVIESGLVQDFDASLSGIGQELGAGAYSMSDVLALPIFKQEESLPPDNENKILPFQYV
 LCAATSPAVKLHDETLTYLNQQSSEYERMLDNRKLGELPEINGKLVKSI FRVVFHRRLLQYTEHQLEGW
 RWNRPGRILDIDIPMSVGIIDPRANPTQLNTEFLWDPKRTSVFIQVHCISTEFTMRKHGGEKGVPRF
 VQIDTFKENENGEYTEHLHSASCQIKVFKPKGADRKQKTDREKMEKRTPEHEKEYQPSYETTILTECSPW
 PEITYVNNSPSPGFNSSHSSFLGEGNGSPNHQPEPPPVTDNLLPTTTPQEAQQWLHRNRFSTFTRLFT
 NFSGADLLKLTRDDVIQICGPADGIRLFNALKGRMVRPRLTIYVCQESLQLREQQQQQQQKHEDGDS
 NGTFFVYHAIYLEELTAVELTEKIAQLFSISPCQISQIYKQGP TGIHVLISDEMIQNFQEEACFILD
 TMK
 ETNDSYHIILK

TRTRPLEQKLISEEDLAANDILDYKDDDDKV

Restriction Sites:

Sgfl-MluI

Cloning Scheme:


ACCN: NM_001173452

ORF Size: 1503 bp

OTI Disclaimer: Due to the inherent nature of this plasmid, standard methods to replicate additional amounts of DNA in E. coli are highly likely to result in mutations and/or rearrangements. Therefore, OriGene does not guarantee the capability to replicate this plasmid DNA. Additional amounts of DNA can be purchased from OriGene with batch-specific, full-sequence verification at a reduced cost. Please contact our customer care team at custsupport@origene.com or by calling 301.340.3188 option 3 for pricing and delivery.

The molecular sequence of this clone aligns with the gene accession number as a point of reference only. However, individual transcript sequences of the same gene can differ through naturally occurring variations (e.g. polymorphisms), each with its own valid existence. This clone is substantially in agreement with the reference, but a complete review of all prevailing variants is recommended prior to use. [More info](#)

OTI Annotation: This clone was engineered to express the complete ORF with an expression tag. Expression varies depending on the nature of the gene.

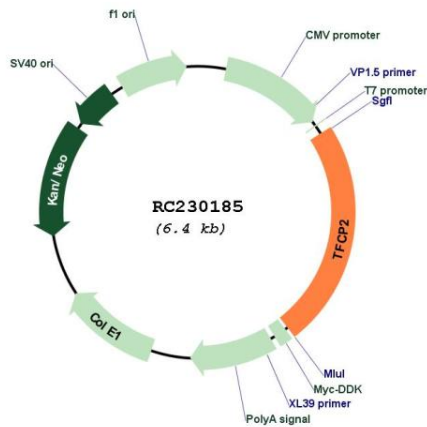
Components: The ORF clone is ion-exchange column purified and shipped in a 2D barcoded Matrix tube containing 10ug of transfection-ready, dried plasmid DNA (reconstitute with 100 ul of water).

- Reconstitution Method:**
1. Centrifuge at 5,000xg for 5min.
 2. Carefully open the tube and add 100ul of sterile water to dissolve the DNA.
 3. Close the tube and incubate for 10 minutes at room temperature.
 4. Briefly vortex the tube and then do a quick spin (less than 5000xg) to concentrate the liquid at the bottom.
 5. Store the suspended plasmid at -20°C. The DNA is stable for at least one year from date of shipping when stored at -20°C.

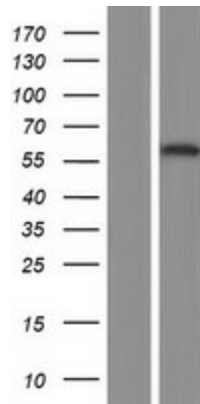
RefSeq: [NM_001173452.2](#)

RefSeq ORF:	1506 bp
Locus ID:	7024
UniProt ID:	Q12800
Cytogenetics:	12q13.12-q13.13
Protein Families:	Transcription Factors
MW:	57.6 kDa
Gene Summary:	This gene encodes a transcription factor that binds the alpha-globin promoter and activates transcription of the alpha-globin gene. The encoded protein regulates erythroid gene expression, plays a role in the transcriptional switch of globin gene promoters, and it activates many other cellular and viral gene promoters. The gene product interacts with certain inflammatory response factors, and polymorphisms of this gene may be involved in the pathogenesis of Alzheimer's disease. [provided by RefSeq, Mar 2010]

Product images:



Circular map for RC230185



Western blot validation of overexpression lysate (Cat# [LY433185]) using anti-DDK antibody (Cat# [TA50011-100]). Left: Cell lysates from untransfected HEK293T cells; Right: Cell lysates from HEK293T cells transfected with RC230185 using transfection reagent MegaTran 2.0 (Cat# [TT210002]).