

Product datasheet for **RC230183**

NELF (NSMF) (NM_001178064) Human Tagged ORF Clone

Product data:

Product Type:	Expression Plasmids
Product Name:	NELF (NSMF) (NM_001178064) Human Tagged ORF Clone
Tag:	Myc-DDK
Symbol:	NELF
Synonyms:	HH9; NELF
Mammalian Cell Selection:	Neomycin
Vector:	pCMV6-Entry (PS100001)
E. coli Selection:	Kanamycin (25 ug/mL)



[View online »](#)

ORF Nucleotide Sequence:

>RC230183 representing NM_001178064
 Red=Cloning site Blue=ORF Green=Tags(s)

TTTTGTAATACGACTCACTATAGGGCGGCCGGAATTCGTCGACTGGATCCGGTACCGAGGAGATCTGCC
 GCC**CGGATCGCC**

ATGGGCGCCGCCCTCCAGGAGGAGGGCGCTGAGGAGCGAGGCCATGTCCTCGGTGGCGGCCAAAGTGC
 GAGCAGCCCGAGCGTTTGGAGAGTACCTGTCCCAGAGTACCCTGAGAACCGCAACGGCGAGATCACCT
 GCTGGCTGATGCCTACTCTGGCCACGACGGTCCCGGAGATGCAGCCGGCCCCCAGAACAAGCGCCGC
 CTGTCCCTCGTCTCCAACGGCTGCTACGAGGGCAGCCTCTCAGAGGAGCCAGCATTAGGAAGCCCGCAG
 GCGAGGGCCCTCAGCCTCGAGTGTACACCATCTCTGGGGAGCCTGCCCTGCTGCCAGCCCTGAGGCGGA
 GGCCATTGAGCTGGCGGTGTTGAAGGGGCGCGGCAGCGGCACCCTCACATCACAGCCAGCCCTGCGC
 GCCAGCCCTGGTGGCAGCCGGGAGGACGTGAGCAGGCCCTGCCAGAGCTGGGCGGCAGCCGCCAGGGCT
 CCAAGGAGTGCCCGGATGTGCCAGCTGGCTCCTGGCCCCACCCTCGGGCCTTTGGGCTGGACCAGCC
 ACCTCTGCCTGAGACCTCCGGTCCCGCAAGAAGCTGGAGAGGATGTACAGCGTTGACCGTGTGTCTGAC
 GACATCCCTATTGTTACCTGGTTCCCAAGGAAAATCTTTTCAGCTTCCAGACAGCAACCACAACATATGC
 AAGCCATCTCGGTGTTACGGGGCTACGCGGAGAGGAAGCGCCGGAACGGGAGAATGATCCGCGTCTGT
 AATCCAGAGGAACCTCCGCAAACACCTGCGCATGGTCGCGAGCCGGAGGGTGAAGGCCAGAGCAGTGC
 CTGAGAGCTCCCACTGCACGCTGGACGAGGCCTTCGAGGACCTGGACTGGGACACTGAGAAGGGCCTGG
 AGGCTGTGGCCTGCGACACCGAAGGCTTCGTGCCACCAAGGTGATGCTCATTTCCTCAAGGTGCCCAA
 GGCTGAGTACATCCCACTATCATCCCGGGATGACCCTCCATCATCCCACCTCTACGACCATGAG
 CACGCAACCTTCGAGGACATCCTTGAGGAGATAGAGAGGAAGCTGAACGCTTACCACAAGGGAGCCAAGA
 TCTGAAAAATGCTGATTTTCTGCCAGGGAGTCTGGACACCTATCTCCTCAAGAACAAGGTGGCCAC
 CTTTGCCAAAGTGGAGAAGGAAGAGGACATGATCACTTCTGGAAGCGGCTGAGCCCGCTGATGAGCAAA
 GTGAACCCAGAGCCGAACGTATCCACATCATGGGCTGCTACATTCTGGGGAACCCCAATGGAGAGAAGC
 GTTCCAGAACCTCAGGACCCTCATGACTCCTTATAGGGTACCTTCGAGTACCCTGGAGCTCTCAGC
 CCAAGGGAAGCAGATGATCGAGACGTAATTTGACTTCCGGTTGTATCGCCTGTGGAAGAGCCGCCAGCAC
 TCGAAGCTGCTGGACTTTGACGACGCTCTG

ACGCGTACGCGGCCGCTCGAGCAGAACTCATCTCAGAAGAGGATCTGGCAGCAATGATATCTGGATT
 ACAAGGATGACGACGATAAGGTTTAA

Protein Sequence:

>RC230183 representing NM_001178064
 Red=Cloning site Green=Tags(s)

MGAASRRRALRSEAMSSVAAKVRAARAFGEYLSQSHPENRNGADHLLADAYSGHDGSPMQPAPQNKRR
 LSLVSNCGYEGSLSEEPSIRKPAGEGPQPRVYTIISGEPALLPSPEAEIELAVVKRRRQRHPHHHSQPLR
 ASPGGSREDVSRPCQSWAGSRQGSKECPGCAQLAPGPTPRAFGLDQPPLPETSGRKKLERMYSVDRVSD
 DIPIRTWFPKENLFSFQTATTTMQAISVFRGYAERKRRKRENDASVIQRNFRKHLRMVGSRRVKAQSSD
 LQSSHCTLDFAFDLDWDEKLEAVACDTEGFVPPKVMLISSKVPKAEYIPTIIRRDDPSIIPILYDHE
 HATFEDIIEEIERKLNHYHKGAKIWKMLIFCQGGPHLYLLKNKVATFAKVEKEEDMIHFWKRLSRLMSK
 VNPEPNVIHIMGCYILGNPNGEKLFQNLRTLMTTPYRVTFESPLELSAQGQMIETYDFRLYRLWKSQRH
 SKLLDFDDVL

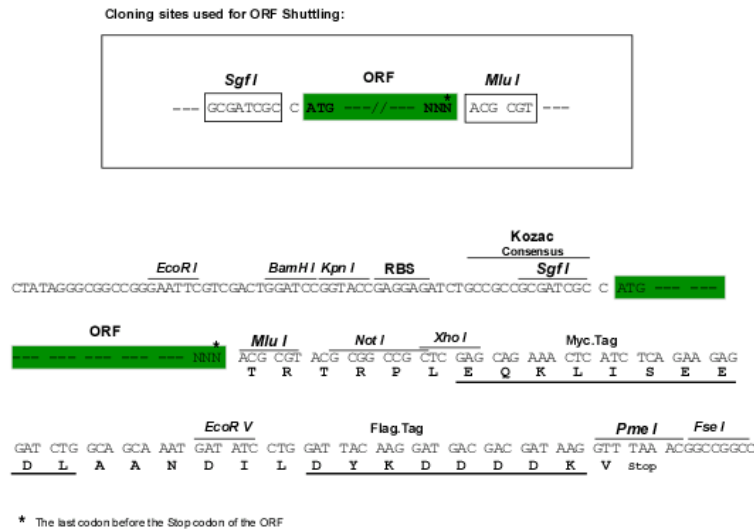
TRTRPLEQKLISEEDLAANDILDYKDDDDKV

Chromatograms:

https://cdn.origene.com/chromatograms/mk8063_f07.zip

Restriction Sites:

Sgfl-Mlul

Cloning Scheme:


ACCN: NM_001178064

ORF Size: 1500 bp

OTI Disclaimer: The molecular sequence of this clone aligns with the gene accession number as a point of reference only. However, individual transcript sequences of the same gene can differ through naturally occurring variations (e.g. polymorphisms), each with its own valid existence. This clone is substantially in agreement with the reference, but a complete review of all prevailing variants is recommended prior to use. [More info](#)

OTI Annotation: This clone was engineered to express the complete ORF with an expression tag. Expression varies depending on the nature of the gene.

Components: The ORF clone is ion-exchange column purified and shipped in a 2D barcoded Matrix tube containing 10ug of transfection-ready, dried plasmid DNA (reconstitute with 100 ul of water).

Reconstitution Method:

1. Centrifuge at 5,000xg for 5min.
2. Carefully open the tube and add 100ul of sterile water to dissolve the DNA.
3. Close the tube and incubate for 10 minutes at room temperature.
4. Briefly vortex the tube and then do a quick spin (less than 5000xg) to concentrate the liquid at the bottom.
5. Store the suspended plasmid at -20°C. The DNA is stable for at least one year from date of shipping when stored at -20°C.

RefSeq: [NM_001178064.1](#), [NP_001171535.1](#)

RefSeq ORF: 1503 bp

Locus ID: 26012

UniProt ID: [Q6X4W1](#)

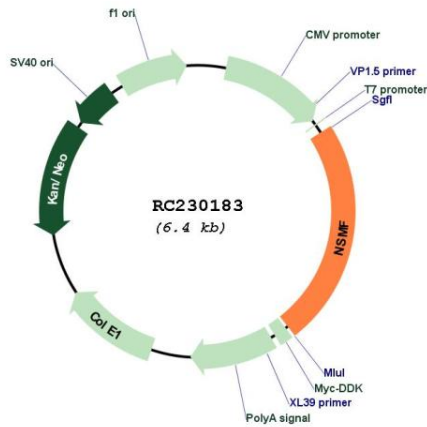
Cytogenetics: 9q34.3

Protein Families: Druggable Genome

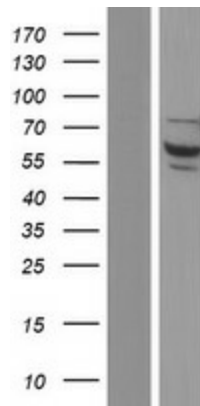
MW: 57.1 kDa

Gene Summary: The protein encoded by this gene is involved in guidance of olfactory axon projections and migration of luteinizing hormone-releasing hormone neurons. Defects in this gene are a cause of idiopathic hypogonadotropic hypogonadism (IHH). Several transcript variants encoding different isoforms have been found for this gene. [provided by RefSeq, May 2010]

Product images:



Circular map for RC230183



Western blot validation of overexpression lysate (Cat# [LY433183]) using anti-DDK antibody (Cat# [TA50011-100]). Left: Cell lysates from untransfected HEK293T cells; Right: Cell lysates from HEK293T cells transfected with RC230183 using transfection reagent MegaTran 2.0 (Cat# [TT210002]).