

## Product datasheet for **RC230180**

### **BANP (NM\_001173540) Human Tagged ORF Clone**

#### **Product data:**

Product Type:	Expression Plasmids
Product Name:	BANP (NM_001173540) Human Tagged ORF Clone
Tag:	Myc-DDK
Symbol:	BANP
Synonyms:	BEND1; SMAR1; SMARBP1
Mammalian Cell Selection:	Neomycin
Vector:	pCMV6-Entry (PS100001)
E. coli Selection:	Kanamycin (25 ug/mL)



[View online »](#)

**ORF Nucleotide Sequence:**

>RC230180 representing NM\_001173540  
 Red=Cloning site Blue=ORF Green=Tags(s)

TTTTGTAATACGACTCACTATAGGGCGGCCGGAATTCGTCGACTGGATCCGGTACCGAGGAGATCTGCC  
 GCC**GCGATCGCC**

ATGATGTCGGAACACGACCTGGCCGATGTGGTTAGATTGCAGTGAAGACCTGAGCCCTGACCACCCAG  
 GTACAGAGCTGTGGGACATTGTTTTGGAGAATCATGTAGTGACAGATGAAGACGAACCTGCTTTGAAACG  
 CCAGCGACTAGAAATCAATTGCCAGGATCCATCTATAAAGTCATTCTGTATTCCATCAACCAGACAATC  
 TGCTTGCGGTTGGATAGCATTGAAGCAAATTGCAAGCCCTGGAGGCTACTTGTAAATCCTTAGAAGAAA  
 AGCTGGATCTGGTCACGAACAAGCAGCAGACGCCCATCCAGGTCCTCCATGGTGGCCGGCTCCCCTCTCGG  
 GGCAACCCAGACGTGCAACAAAGTGCATGCGCTGTGCCTGGGCGTCGGCAGAACACCATTGTGGTGAAG  
 GTGCCGGGCAAGAAGACAGCCACCACGAGGACGGGGAGAGCGGCTCGGAGGCCAGCGACTCTGTGTCCA  
 GCTGTGGGAGGGCGGCGAGTCAAGCATCGGGAGCAACGTACGCTCATCACCTGAACCGGAAGAGGA  
 CTACCCCAATGGCACCTGGCTGGGCGACGAGAACAACCCGAGATGCGGGTACGCTGCGCCATCATCCCC  
 TCCGACATGCTGCACATCAGACCAACTGCCGCACGGCCGAGAAGATGGCGCTCACGCTGCTGGACTACC  
 TCTTCCACCGCAGGTGCAGGCTGTGTCCAACCTCTCGGGCAGGGCAAGCACGGGAAGAAGCAGCTGGA  
 CCCGCTACCATCTACGGCATCCGGTGTACCTTTTCTATAAATTTGGCATCACAGAATCCGACTGGTAC  
 CGAATCAAGCAGAGCATCGACTCCAAGTGCCGCACGGCGTGGCGGCGCAAGCAGCGGGGCCAGAGCTGG  
 CGGTCAAGAGTTCTCGCGGAGAACGCCAACTCGTCTCTACTGCCCTTACAGACCGATGATGAGCAC  
 CCCACCTCTGCCAGCGAGCTCCCGCAGCCACAGCCGACGGCCGAGCCCTGACTACGCGCTGGCCAAC  
 GCACAGCAGGTGCAGATCCACCAGATCGGAGAAGACGGACAGGTGCAAGTAATCCACAGGGACACCTCC  
 ACATCGCCAGGTGCCGACGGGGAGCAAGTCCAGATCACGCAGGACAGCGAGGGCAACCTCCAGATCCA  
 TCACGTGGGGCAGGACGGTCACTTCTAGAGGCCACCCGATCCCTGCTCCTGGCCCCATCCGCTCTTC  
 AAAGCCAGCAGTGGCCAGGTGCTGCAGGTGCACAGCTGATCGCCGTGGCCTCCTCGGACCCCGGGCGG  
 CGGGCGTGGATGGGTCCCACTCCAGGGCAGCGACATCCAGGTTCACTGACGTGCGCAGCTGAG  
 TGACCACAGGCCGGGGCACAGACGGCCGAAGCCCTGCAGCCACGCTACAGCCGGAGATGCAGCTCGAG  
 CACGGGGCCATCCAGATTCAG

**ACGCGT**ACGCGGCCGCTCGAGCAGAAACTCATCTCAGAAGAGGATCTGGCAGCAAATGATATCCTGGATT  
 ACAAGGATGACGACGATAAGGTTTAA

**Protein Sequence:**

>RC230180 representing NM\_001173540  
 Red=Cloning site Green=Tags(s)

MMSEHDLADVQIAVEDLSPDHPGTELWDIVLENHVVTDEDEPALKRQRLEINCQDPSIKSFLYSINQTI  
 CLRLDSIEAKLQALEATCKSLEEKLDLVTNKQHSPIQVPMVAGSPLGATQTCNKVRCVAVPGRRQNTIVVK  
 VPGQEDSHHEDGESGSEASDSVSSCGAGSQSIGSNVTLITLNSEEDYPNGTWLGDENNPENMRVCAIIP  
 SDMLHISTNCRATAEKMALTLDDYLFHREVQAVSNLSGQKHKKQLDPLTIYGIRCHLFYKFGITESDWY  
 RIKQSIDSKCRATAWRKQRGQSLAVKFSRRTPNSSSYCPSEPMSTPPPASELPQPQPQALHYALAN  
 AQQVQIHQIGEDGQVQVQPQGLHIAQVPQGEVQITQDSEGNLQIHHVQDQGLLEATRIPCLLAPSVF  
 KASSGQVLQGAQLIAVASSDPAAGVDGSPLQGSDIQVQYVQLAPVSDHTAGAQTAEALQPTLQPEMQLE  
 HGAIQIQ

**TRTRPLEQKLI**SEEDLAANDILDYKDDDDKV

**Chromatograms:**

[https://cdn.origene.com/chromatograms/mk8063\\_e02.zip](https://cdn.origene.com/chromatograms/mk8063_e02.zip)

**Restriction Sites:**

Sgfl-Mlul

**Cloning Scheme:**


**ACCN:** NM\_001173540

**ORF Size:** 1491 bp

**OTI Disclaimer:** The molecular sequence of this clone aligns with the gene accession number as a point of reference only. However, individual transcript sequences of the same gene can differ through naturally occurring variations (e.g. polymorphisms), each with its own valid existence. This clone is substantially in agreement with the reference, but a complete review of all prevailing variants is recommended prior to use. [More info](#)

**OTI Annotation:** This clone was engineered to express the complete ORF with an expression tag. Expression varies depending on the nature of the gene.

**Components:** The ORF clone is ion-exchange column purified and shipped in a 2D barcoded Matrix tube containing 10ug of transfection-ready, dried plasmid DNA (reconstitute with 100 ul of water).

- Reconstitution Method:**
1. Centrifuge at 5,000xg for 5min.
  2. Carefully open the tube and add 100ul of sterile water to dissolve the DNA.
  3. Close the tube and incubate for 10 minutes at room temperature.
  4. Briefly vortex the tube and then do a quick spin (less than 5000xg) to concentrate the liquid at the bottom.
  5. Store the suspended plasmid at -20°C. The DNA is stable for at least one year from date of shipping when stored at -20°C.

**RefSeq:** [NM\\_001173540.2](#)

**RefSeq ORF:** 1494 bp

**Locus ID:** 54971

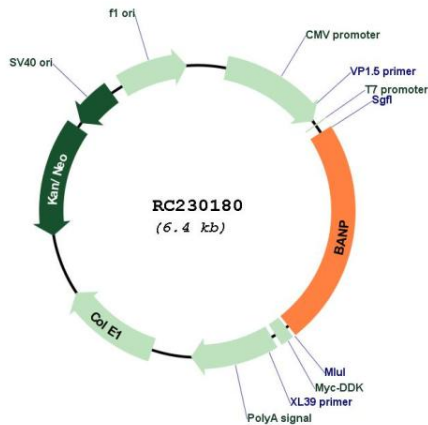
**UniProt ID:** [Q8N9N5](#)

**Cytogenetics:** 16q24.2

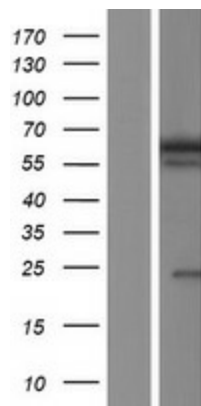
**MW:** 54.7 kDa

**Gene Summary:**

This gene encodes a protein that binds to matrix attachment regions. The protein forms a complex with p53 and negatively regulates p53 transcription, and functions as a tumor suppressor and cell cycle regulator. Multiple transcript variants encoding different isoforms have been found for this gene. [provided by RefSeq, Mar 2010]

**Product images:**


Circular map for RC230180



Western blot validation of overexpression lysate (Cat# [LY433180]) using anti-DDK antibody (Cat# [TA50011-100]). Left: Cell lysates from untransfected HEK293T cells; Right: Cell lysates from HEK293T cells transfected with RC230180 using transfection reagent MegaTran 2.0 (Cat# [TT210002]).