

Product datasheet for **RC230177**

NEU4 (NM_001167599) Human Tagged ORF Clone

Product data:

Product Type:	Expression Plasmids
Product Name:	NEU4 (NM_001167599) Human Tagged ORF Clone
Tag:	Myc-DDK
Symbol:	NEU4
Mammalian Cell Selection:	Neomycin
Vector:	pCMV6-Entry (PS100001)
E. coli Selection:	Kanamycin (25 ug/mL)



[View online »](#)

ORF Nucleotide Sequence:

>RC230177 representing NM_001167599
 Red=Cloning site Blue=ORF Green=Tags(s)

TTTTGTAATACGACTCACTATAGGGCGGCCGGGAATTCGTCGACTGGATCCGGTACCGAGGAGATCTGCC
 GCC**CGGATCGCC**

ATGATGAGCTCTGCAGCCTTCCCAAGTGGCTGCAGAGCATGGGGTCCCTCGTACCCTTCACGGACAG
 TGCTCTTCGAGCGGAGAGGACGGGCTGACCTACCGCGTGCCCTCGCTGCTCCCGTGCCCCCGGGCC
 CACCCTGTGGCCTTTGTGGAGCAGCGGCTCAGCCCTGACGACTCCCACGCCACCGCTGGTGCTGAGG
 AGGGGCACGCTGGCCGGGGGCTCCGTGCGGTGGGGTGCCTGCACGTGCTGGGGACAGCAGCCCTGGCGG
 AGCACCCTGTCATGAACCCCTGCCCTGTGCACGATGCTGGCAGGGCACCGTCTTCTCTTTCATCGC
 GGTGCTGGGCCACACGCCTGAGGCCGTGCAGATCGCCACGGGAAGGAACCGCGCGCCTCTGCTGTGTG
 GCCAGCCGTGACCGCGCCTCTCGTGGGGCAGCGCCGGGACCTACCGAGGAGGCCATCGGTGGTGCCG
 TGCAGGACTGGGCCACATTCGCTGTGGTCCCAGCCACGGTGTGCAGCTGCCCTCAGGCCGCTGCTGGT
 ACCCGCTACACCTACCGCGTGGACCGCGAGAGTGTTCGCAAGATCTGCCGACAGCCCTCACTCC
 TTCGCTTCTACAGCGATGACCACGGCCACCTGGCGCTGTGGAGGCCCTCGTGCCCAACCTGCGCTCAG
 GCGAGTGCCAGCTGGCAGCGGTGGACGGTGGGCAGGCCGCGAGCTTCTCTACTGCAATGCCCGGAGCCC
 ACTGGGCAGCCGTGTGCAGGCGCTCAGCACTGACGAGGGCACCTCCTTCCTGCCCGCAGAGCGCGTGGCT
 TCCCTGCCGAGACTGCCTGGGGCTGCCAGGGCAGCATCGTGGGCTTCCCAGCCCCGCCCCCAACAGGC
 CACGGGATGACAGTTGGTCAAGTGGGCCCCGGGAGTCCCCCAGCCCTCCACTCCTCGGTCTGGAGTCCA
 CGAACCCAGAGGAGGCTGCTGTAGACCCCGTGGAGGCCAGGTGCCTGGTGGGCCCTCAGCCGCTG
 CAGCCTCGGGGGATGGCCCCAGGCAGCCTGGCCCCAGGCCTGGGGTCAAGTGGGGATGTGGGGTCTGGA
 CCCTGGCACTCCCATGCCCTTTGCTGCCCGCCAGAGCCCCACGTGGCTGCTACTCCACCCAGT
 GGGGCGCAGGGCTCGGCTACACATGGGTATCCGCTGAGCCAGTCCCGCTGGACCCGCGCAGCTGGACA
 GAGCCCTGGGTGATCTACGAGGGCCCCAGCGGCTACTCCGACCTGGCGTCCATCGGGCGGCCCTGAGG
 GGGCCTGGTTTTGCTGCCTGTACGAGAGCGGGGCCAGGACCTCCTATGATGAGATTTCTTTGTAC
 ATTCTCCCTGCGTGAAGTCTGGAGAAGTGCAGGCCAGCCCCAACCGCCCAACCTTGGGGACAAGCT
 CGGGGTGCTGCTGGCCCTCC

ACGCGTACGCGGCCGCTCGAGCAGAACTCATCTCAGAAGAGGATCTGGCAGCAATGATATCCTGGATT
 ACAAGGATGACGACGATAAGGTTTAA

Protein Sequence:

>RC230177 representing NM_001167599
 Red=Cloning site Green=Tags(s)

MMSSAAFPRWLQSMGVPRTSPRTVLFERERTGLTYRVPSLLPVPPGPTLLAFVEQRLSPDDSHAHRLVLR
 RGTLAGGSVRWALHVLGTAALAEHRSMNCPVHDAGTGVFLFFIAVLGHTPEAVQIATGRNAARLCCV
 ASRDAGLSWGSARDL TEEAIGGAVQDWATF AVGPGHGVQLPSGRLLVPAYTYRVDRECFGKICRTSPHS
 FAFYSDDHGRTWRCGGLVPNLRSGECQLAAVDGGQAGSFLYCNARSPLGSRVQALSTDEGTSFLPAERVA
 SLPETAWGCQGSIVGFAPAPNRPDDSWVSGPSPLQPPLLPGVHEPPEEAAVDPRGGQVPGGPFSL
 QPRGDGRPQPRPGVSGDVGSWTLALPMPFAAPPQSPTWLLYSHPVGRRARLHMGIRLSQSPLDPRSWT
 EPWVIYEGPSGSDLASIGPAPEGGLVFACLYESGARTSYDEISFCTFSLREVLNVPASPKPPLNGDKP
 RGCCWPS

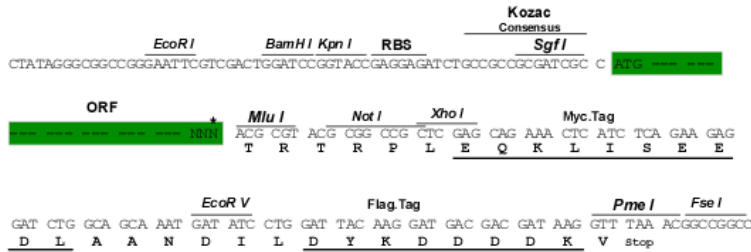
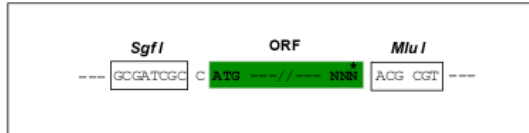
TRTRPLEQKLISEEDLAANDILDYKDDDDKV

Restriction Sites:

Sgfl-MluI

Cloning Scheme:

Cloning sites used for ORF Shutting:



* The last codon before the Stop codon of the ORF

ACCN: NM_001167599

ORF Size: 1491 bp

OTI Disclaimer: The molecular sequence of this clone aligns with the gene accession number as a point of reference only. However, individual transcript sequences of the same gene can differ through naturally occurring variations (e.g. polymorphisms), each with its own valid existence. This clone is substantially in agreement with the reference, but a complete review of all prevailing variants is recommended prior to use. [More info](#)

OTI Annotation: This clone was engineered to express the complete ORF with an expression tag. Expression varies depending on the nature of the gene.

Components: The ORF clone is ion-exchange column purified and shipped in a 2D barcoded Matrix tube containing 10ug of transfection-ready, dried plasmid DNA (reconstitute with 100 ul of water).

Reconstitution Method:

1. Centrifuge at 5,000xg for 5min.
2. Carefully open the tube and add 100ul of sterile water to dissolve the DNA.
3. Close the tube and incubate for 10 minutes at room temperature.
4. Briefly vortex the tube and then do a quick spin (less than 5000xg) to concentrate the liquid at the bottom.
5. Store the suspended plasmid at -20°C. The DNA is stable for at least one year from date of shipping when stored at -20°C.

RefSeq: [NM_001167599.3](#)
RefSeq Size: 2376 bp

RefSeq ORF: 1494 bp

Locus ID: 129807

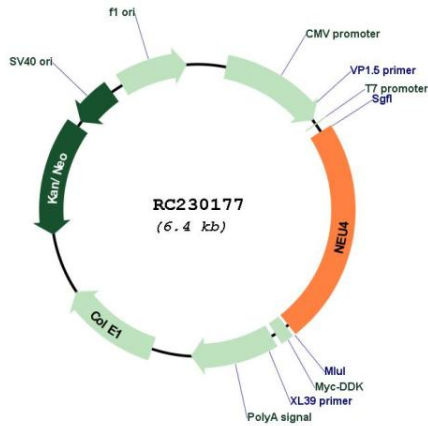
UniProt ID: [Q8WWR8](#)
Cytogenetics: 2q37.3

Protein Pathways: Other glycan degradation, Sphingolipid metabolism

MW: 53.1 kDa

Gene Summary: The protein encoded by this gene belongs to a family of glycohydrolytic enzymes, which remove terminal sialic acid residues from various sialo derivatives, such as glycoproteins, glycolipids, oligosaccharides, and gangliosides. Alternatively spliced transcript variants encoding different isoforms have been noted for this gene. [provided by RefSeq, Nov 2009]

Product images:



Circular map for RC230177