

## Product datasheet for **RC230174**

### **FKLF / KLF11 (KLF11) (NM\_001177716) Human Tagged ORF Clone**

#### **Product data:**

Product Type:	Expression Plasmids
Product Name:	FKLF / KLF11 (KLF11) (NM_001177716) Human Tagged ORF Clone
Tag:	Myc-DDK
Symbol:	FKLF / KLF11
Synonyms:	FKLF; FKLF1; MODY7; TIEG2; Tieg3
Mammalian Cell Selection:	Neomycin
Vector:	pCMV6-Entry (PS100001)
E. coli Selection:	Kanamycin (25 ug/mL)



[View online »](#)

**ORF Nucleotide Sequence:**

>RC230174 representing NM\_001177716  
 Red=Cloning site Blue=ORF Green=Tags(s)

TTTTGTAATACGACTCACTATAGGGCGGCCGGAATTCGTCGACTGGATCCGGTACCGAGGAGATCTGCC  
 GCC**GCGATCGCC**

ATGGACATATGTGAGTCCATCCTGGAGAGGAAGCGGCATGACAGCGAAAGGTCTACTTGCAGCATCTTGG  
 AGCAGACAGACATGGAAGCTGTCGAGGCTCTGTTTGTATGAGCTCCTGGGGTCAAAGATCCCAGAAAGG  
 TGACCTGTTGCGGATAAGACCCCTCACGCTGTCTGACTCTGGGGATGTCACCACCACTGTGCATATG  
 GATGCAGCCACACCTGAACTACCAAAGACTTCCATTCTTTATCGACTCTGTGCATAACTCCTCCTCAGA  
 GCCCTGATCTCGTGGAGCCATCGACAAGGACACCTGTTTCTCCCAAGTAACAGATTCCAAGCATGTAC  
 AGCCACGGATGTTCTCCAGTCTCTGCCGTAGTGGCCAGAGCTCTGAGCGGGGGCGGGAGAGGGGCTT  
 CTGGGTTTGGAGCCAGTCCCAGCTCTCCCTGCAGGGCCAAGGGGACTAGCGTGATCCGACACACTGGG  
 AGAGCCCTGCTGCCTGCTTCCACCATCCAGACTCCAGATTGCCGGCTTCTGACAGCAGAGAAGGAGA  
 AGAGCAGCTTCTGGGACACTTTGAACTTTCAGGACACACACCTCACGGACAGTTTACTCAGCACTAAC  
 TTGGTGTCTGTAGCCCTGCTTGCACAAGTCTGGTGGCCTGCTGCTCACTGACAAAGGCCAGCAGGCGAG  
 GGTGGCCTGGTGCAGTTCAGACTTGCTCACAAAGAATTATGAAAATGACCTGCCAGGAAAACACCCC  
 TCTGATTTCTGTCTGTCCCTGCTCCCTGTCTTGGCAGATGATCCCTGTGACTGGACAAAGTAGC  
 ATGTTACCAGCTTTTTGAAGCCCCCTCCCAGTTGTCTGTGGGGACTGTGAGACCCATCCTAGCTCAGG  
 CTGCTCCAGCGCCTCAACCTGTGTTCTGTGGGACCTGCTGTGCCTCAGGGAGCTGTGATGTTGGTCTGCC  
 CCAGGGAGCCCTCCCTCCGCTGCCCTGTGCAGCCAATGTCATGGTCCGGGAATACCAAGTTGTTG  
 CCCCTTGCCCTGCTCCAGTGTTCATCACCTTAGCCAAAAGTGTGCTCCCTCAGGTAGACTTTCCCGAA  
 GGAGGAACTATGTTTGCAGCTTCCAGGTTGCCGGAAGACCTACTTCAAAGTCCCACCTTAAGGCCCA  
 TCTTCGCACTCACACAGGGGAGAAGCCTTCAACTGCAGCTGGGATGGCTGTGATAAAAAGTTTGTCTCGT  
 TCGGATGAGCTGTACGCCACCGCAGAAGTTCACACAGGGGAGAAGAAGTTTGTGTGCCCGGTGTGTGACC  
 GACGTTTTCATGCGCAGTGACCACCTGACGAAGCATGCCCGGCCACATGACGACCAAGAAGATCCAGG  
 CTGGCAGGAGAGGTTGGCAAGCTGAACAGAATCGCTCTGCAGAGAGCCCGGGGAGCCACTGTTGAGC  
 ATGCCAGCCTCTGCC

**ACGCGT**ACGCGGGCGCTCGAGCAGAAACTCATCTCAGAAGAGGATCTGGCAGCAAATGATATCCTGGATT  
 ACAAGGATGACGACGATAAGGTTTAA

**Protein Sequence:**

>RC230174 representing NM\_001177716  
 Red=Cloning site Green=Tags(s)

MDICESILERKRHDSERSTCSILEQTDMEAVEALVCMSSWGQRSQKGDLLRIRLTPVSDSGDVTITVHM  
 DAATPELPKDFHSLSTLCITPPQSPDLVEPSTRTPVSPQVTDKACTATDVLQSSAVVARALSGGAERGL  
 LGLEPVPSSPCRAKGTSVIRHTGESPAACFPTIQTDPDCRLSDSREGEEQLLGHFETLQDTHLTDSLSTN  
 LVSCQPCLHKSGLLLTDKGQQAGWPGAVQTCSPKNYENDLPRKTTPLISVSVAPPVLCQMIPVTGQSS  
 MLPAFLKPPPPQLSVGTVRPILAQAAPAPQPVFVGPVAVPQAVMLVLPQALPPPAPCAANVMAAGNTKLL  
 PLAPAPVFITSSQNCVPQVDFSRRRNYVCSFPGCRKTYFKSSHLKAHLRHTHTGEKPFNCSWDGCDKFFAR  
 SDEL SRHRRHTHTGEKFFVCPVCDRRFMRSDDLTKHARRHMTTKKIPGWQAEVGLNRIASAEPSGSPVLS  
 MPASA

**TRTRPLEQKLI**SEEDLAANDILDYKDDDDKV

**Chromatograms:**

[https://cdn.origene.com/chromatograms/mk8063\\_d05.zip](https://cdn.origene.com/chromatograms/mk8063_d05.zip)

**Restriction Sites:**

SgfI-MluI

**Cloning Scheme:**


**ACCN:** NM\_001177716

**ORF Size:** 1485 bp

**OTI Disclaimer:** The molecular sequence of this clone aligns with the gene accession number as a point of reference only. However, individual transcript sequences of the same gene can differ through naturally occurring variations (e.g. polymorphisms), each with its own valid existence. This clone is substantially in agreement with the reference, but a complete review of all prevailing variants is recommended prior to use. [More info](#)

**OTI Annotation:** This clone was engineered to express the complete ORF with an expression tag. Expression varies depending on the nature of the gene.

**Components:** The ORF clone is ion-exchange column purified and shipped in a 2D barcoded Matrix tube containing 10ug of transfection-ready, dried plasmid DNA (reconstitute with 100 ul of water).

**Reconstitution Method:**

1. Centrifuge at 5,000xg for 5min.
2. Carefully open the tube and add 100ul of sterile water to dissolve the DNA.
3. Close the tube and incubate for 10 minutes at room temperature.
4. Briefly vortex the tube and then do a quick spin (less than 5000xg) to concentrate the liquid at the bottom.
5. Store the suspended plasmid at -20°C. The DNA is stable for at least one year from date of shipping when stored at -20°C.

**Note:** Plasmids are not sterile. For experiments where strict sterility is required, filtration with 0.22um filter is required.

**RefSeq:** [NM\\_001177716.1](#), [NP\\_001171187.1](#)

**RefSeq ORF:** 1488 bp

**Locus ID:** 8462

**UniProt ID:** [O14901](#)

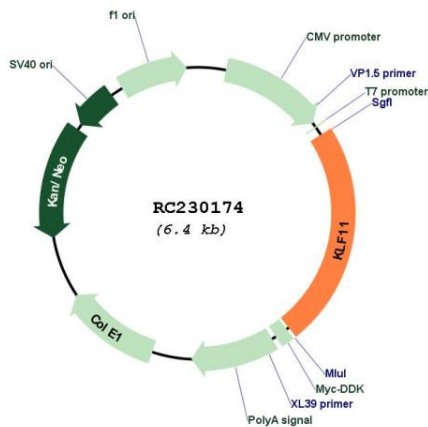
**Cytogenetics:** 2p25.1

**Protein Families:** Transcription Factors

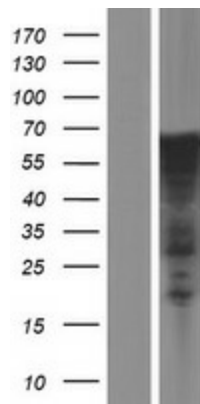
**MW:** 53.8 kDa

**Gene Summary:** The protein encoded by this gene is a zinc finger transcription factor that binds to SP1-like sequences in epsilon- and gamma-globin gene promoters. This binding inhibits cell growth and causes apoptosis. Defects in this gene are a cause of maturity-onset diabetes of the young type 7 (MODY7). Three transcript variants encoding two different isoforms have been found for this gene. [provided by RefSeq, Apr 2010]

**Product images:**



Circular map for RC230174



Western blot validation of overexpression lysate (Cat# [LY433174]) using anti-DDK antibody (Cat# [TA50011-100]). Left: Cell lysates from untransfected HEK293T cells; Right: Cell lysates from HEK293T cells transfected with RC230174 using transfection reagent MegaTran 2.0 (Cat# [TT210002]).