

Product datasheet for **RC230157**

DNA Polymerase lambda (POLL) (NM_001174085) Human Tagged ORF Clone

Product data:

Product Type:	Expression Plasmids
Product Name:	DNA Polymerase lambda (POLL) (NM_001174085) Human Tagged ORF Clone
Tag:	Myc-DDK
Symbol:	DNA Polymerase lambda
Synonyms:	BETAN; POLKAPPA
Mammalian Cell Selection:	Neomycin
Vector:	pCMV6-Entry (PS100001)
E. coli Selection:	Kanamycin (25 ug/mL)



[View online »](#)

ORF Nucleotide Sequence:

>RC230157 representing NM_001174085
 Red=Cloning site Blue=ORF Green=Tags(s)

TTTTGTAATACGACTCACTATAGGGCGGCCGGAATTCGTCGACTGGATCCGGTACCGAGGAGATCTGCC
 GCC**CGGATCGCC**

ATGGATCCAGGGGTATCTTGAAGGCATTTCCAAGCGCAGAAAATTCATGCTGATGCATCATCAAAG
 TACTTGCAAAGATTCTAGGAGGGAAGAGGGAGAAGAAGCAGAAGAGTGGCTGAGCTCCCTCGGGCCCA
 TGTGTGCGCACTGGCATTGGACGAGCCCGGCAGAACTTTGAGAAGCAGATTGTTCCAGCATGGCGGC
 CAGCTATGCCCTGCCAGGGCCAGGTGTCACTCACATTGGTGGATGAAGGCATGGACTATGAGCGAG
 CCCTCCGCTTCTCAGACTACCCAGCTGCCCCGGGTGCTCAGCTGGTGAAGTCAGCCTGGCTGAGCTT
 GTGCCCTCAGGAGAGGAGGCTGGTGGATGTAGCTGGATTGAGCATCTTCATCCCCAGTAGTACTTGGAC
 CATCCACAGCCCAGCAAGGCAGAGCAGGATGCTTCTATTCTCCTGGCACCCATGAGGCCCTGCTTCAGA
 CAGCCCTTCTCCTCCTCCTCCACCAGGCCTGTGTCTCTCCCAAAGGCAAAGAGGCACCAAA
 CACCCAAGCCCAGCCATCTCTGATGATGAAGCCAGTGTGGGGAAGAAACCAGGAGGCCTGCAGTATC
 CCTGGGATTGGGAAGCGGATGGCTGAGAAAATCATAGAGATCCTGGAGAGCGGGCATTTCGCGGAAGCTGG
 ACCATATCAGTGAGAGCGTGCCTGTCTTGGAGCTCTTCTCCAACATCTGGGGAGCTGGGACCAAGACTGC
 CCAGATGTGGTACCAACAGGGCTTCCGAAGTCTGGAAGACATCCGCAGCCAGGCCTCCCTGACAACCCAG
 CAGGCCATCGGCCTGAAGCATTACAGTGACTTCTGGAACGTATGCCAGGGAGGAGGCTACAGAGATTG
 AGCAGACAGTCCAGAAAGCAGCCAGGCCTTTAACTCTGGGCTGTGTGTGGCATGTGGTTTCATACCC
 ACGGGAAAGGCGACCTGTGGTGTGTCGACGTGCTCACTCACCCAGATGGCCGGTCCCACCGGGGT
 ATCTTCAGCCGCTCCTTGACAGTCTTCGGCAGGAAGGTTCTCACAGATGACTTGGTGAGCCAAGAGG
 AGAATGGTCAGCAACAGAAGTACTTGGGGGTGTGCCGGTCCCAGGGCCAGGGCGGCACCCGGCCT
 GGACATCATCGTGGTGCCCTATAGCGAGTTTGCCTGTGCCCTGCTTACTTCACCGGCTCTGCACACTTC
 AACCGCTCCATGCGAGCCCTGGCAAAACCAAGGCATGAGTCTGTGAGAACATGCCCTCAGCACTGCTG
 TGGTCCGGAACCCATGGCTGCAAGGTGGGCCTGGCCGAGTGTGCCACTCCCACTGAGAAGGATGT
 CTTAGGCTCTTAGGCCTCCCTACCGAAGCTGCTGAGCGGGACTGG

ACGCGTACGCGGCCGCTCGAGCAGAACTCATCTCAGAAGAGGATCTGGCAGCAATGATATCTGGATT
 ACAAGGATGACGACGATAAGGTTTAA

Protein Sequence:

>RC230157 representing NM_001174085
 Red=Cloning site Green=Tags(s)

MDPRGILKAFPKRQKIHADASSKVLAKIPREEEGEEAEWLSSLRAHVVRTGIGRARAELFEKQIVQHGG
 QLCPAQPGVTHIVVDEGMDYERALRLLRPLPPGAQLVKSAWLSLCLQERRLVDVAGFSIFIPSRYLD
 HPQPSKAEQDASIPPGTHEALLQTALSPPPPTRPVSPQKAKEAPNTQAQPI SDDEASDGEETQEACSI
 PGIGKRMAEKIIEILESGLRKLHDHISESVPVLELFSNIWAGTKTAQMWYQQGFRSLEDIRSQASLTTQ
 QAIGLKHYSDFLERMPREEATEIEQTVQKAAAFNSGLLVCACGSYRRGKATCGDVDVLITHPDGRSHRG
 IFSRLDLSLRQEGFLTDDLVSQEENGQQKYLGVCRLLPGPGRHRRLDII VVPYSEFACALLYFTGSAHF
 NRSMLAKTKGMSLSEHALSTAVVRNTHGCKVGPGRVLPPTTEKDVFRLLGLPYREPAERDW

TRTRPLEQKLI SEEDLAANDILDYKDDDDKV

Chromatograms:

https://cdn.origene.com/chromatograms/mk8062_g12.zip

Restriction Sites:

Sgfl-Mlul

Cloning Scheme:


ACCN: NM_001174085

ORF Size: 1449 bp

OTI Disclaimer: The molecular sequence of this clone aligns with the gene accession number as a point of reference only. However, individual transcript sequences of the same gene can differ through naturally occurring variations (e.g. polymorphisms), each with its own valid existence. This clone is substantially in agreement with the reference, but a complete review of all prevailing variants is recommended prior to use. [More info](#)

OTI Annotation: This clone was engineered to express the complete ORF with an expression tag. Expression varies depending on the nature of the gene.

Components: The ORF clone is ion-exchange column purified and shipped in a 2D barcoded Matrix tube containing 10ug of transfection-ready, dried plasmid DNA (reconstitute with 100 ul of water).

- Reconstitution Method:**
1. Centrifuge at 5,000xg for 5min.
 2. Carefully open the tube and add 100ul of sterile water to dissolve the DNA.
 3. Close the tube and incubate for 10 minutes at room temperature.
 4. Briefly vortex the tube and then do a quick spin (less than 5000xg) to concentrate the liquid at the bottom.
 5. Store the suspended plasmid at -20°C. The DNA is stable for at least one year from date of shipping when stored at -20°C.

RefSeq: [NM_001174085.1](#), [NP_001167556.1](#)

RefSeq ORF: 1452 bp

Locus ID: 27343

UniProt ID: [Q9UGP5](#)

Cytogenetics: 10q24.32

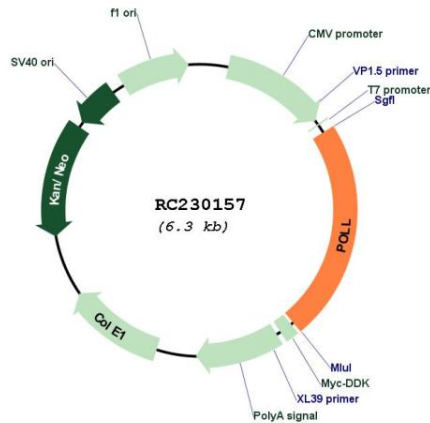
Protein Families: Druggable Genome

Protein Pathways: Base excision repair, Non-homologous end-joining

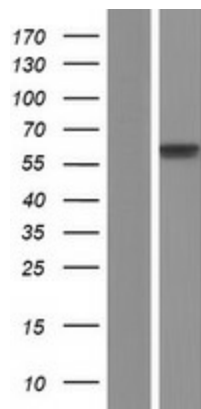
MW: 54 kDa

Gene Summary: This gene encodes a DNA polymerase. DNA polymerases catalyze DNA-template-directed extension of the 3'-end of a DNA strand. This particular polymerase, which is a member of the X family of DNA polymerases, likely plays a role in non-homologous end joining and other DNA repair processes. Alternatively spliced transcript variants have been described. [provided by RefSeq, Mar 2010]

Product images:



Circular map for RC230157



Western blot validation of overexpression lysate (Cat# [LY433157]) using anti-DDK antibody (Cat# [TA50011-100]). Left: Cell lysates from untransfected HEK293T cells; Right: Cell lysates from HEK293T cells transfected with RC230157 using transfection reagent MegaTran 2.0 (Cat# [TT210002]).