

Product datasheet for **RC230152**

CTSA (NM_001167594) Human Tagged ORF Clone

Product data:

Product Type:	Expression Plasmids
Product Name:	CTSA (NM_001167594) Human Tagged ORF Clone
Tag:	Myc-DDK
Symbol:	CTSA
Synonyms:	GLB2; GSL; NGBE; PPCA; PPGB
Mammalian Cell Selection:	Neomycin
Vector:	pCMV6-Entry (PS100001)
E. coli Selection:	Kanamycin (25 ug/mL)



[View online »](#)

ORF Nucleotide Sequence:

>RC230152 representing NM_001167594
 Red=Cloning site Blue=ORF Green=Tags(s)

TTTTGTAATACGACTCACTATAGGGCGGCCGGAATTCGTCGACTGGATCCGGTACCGAGGAGATCTGCC
 GCC**GCGATCGCC**

ATGACTTCCAGTCCCGGGCCCTCTGGAGAGCAAGGACGCGGGGAGCAGAGATGATCCGAGCCGCGC
 CGCCGCCGCTGTTCTGCTGCTGCTGCTGCTGCTGCTAGTGTCTGGCGTCCCGAGGCGAGGACG
 CCCCAGCCAGGACGAGATCCAGCGCCTCCCGGGCTGGCCAAGCAGCCGTCCTTCCGCCAGTACTCCGGC
 TACCTCAAAGGCTCCGGCTCCAAGCACCTCCACTACTGGTTTGTGGAGTCCCAGAAGGATCCCGAGAACA
 GCCCTGTGGTGTCTGGCTCAATGGGGTCCCGGCTGCAGCTCACTAGATGGGCTCTCACAGAGCATGG
 CCCCTTCTGATTGCCAATGTGTATACCTGGAGTCCCAGCTGGGGTGGGCTTCTCTACTCCGATGAC
 AAGTTTTATGCAACTAATGACTGAGGTGCCCCAGAGCAATTTTGAGGCCCTTCAAGATTTCTCCGCC
 TCTTCCGGAGTACAAGAACAACAACTTTTCTGACCGGGGAGAGCTATGCTGGCATCTACATCCCAC
 CCTGGCCGTGCTGGTATGCAGGATCCCAGCATGAACCTTCAGGGGCTGGCTGTGGCAATGGACTCTCC
 TCCTATGAGCAGAATGACAACTCCTGGTCTACTTTGCCTACTACCATGGCCTTCTGGGGAACAGGCTTT
 GGTCTTCTCTCCAGACCACTGCTGCTCTCAAAACAAGTGAACCTTCTATGACAACAAAGACCTGGAATG
 CGTGACCAATCTTCAGGAAGTGGCCGCATCGTGGGCAACTCTGGCCTCAACATCTACAATCTCTATGCC
 CCGTGTGCTGGAGGGTGGCCAGCCATTTAGGTATGAGAAGGACACTGTTGTGGTCCAGGATTTGGGCA
 ACATCTTCACTCGCTGCCACTCAAGCGGATGTGGCATCAGGCACTGCTGCGCTCAGGGGATAAAGTGGC
 CATGGACCCCTGCACCAACAACAGCTGCTTCCACCTACCTCAACAACCCGTACGTGCGGAAGGCC
 CTC AACATCCCGAGCAGCTGCCACAATGGGACATGTGCAACTTCTGGTAAACTTACAGTACCGCCGTC
 TCTACCGAAGCATGAACCTCCAGTATCTGAAGCTGCTTAGCTCACAGAAATACCAGATCCTATTATAA
 TGGAGATGTAGACATGGCCTGCAATTTTCATGGGGATGAGTGGTTTGTGGATTCCCTCAACCAGAAAGT
 GAGGTGCAGCGCCGCCCTGTTAGTGAAGTACGGGGACAGCGGGGAGCAGATTGCCGGCTTCGTGAAGG
 AGTTCTCCACATCGCCTTTCTCACGATCAAGGGCGCCGACATGGTCCACCGACAAGCCCTCGC
 TGCTTACCATGTTCTCCGCTTCTGAAACAAGCAGCCATAC

ACGCGTACGCGGCCGCTCGAGCAGAACTCATCTCAGAAGAGGATCTGGCAGCAATGATATCTGGATT
 ACAAGGATGACGACGATAAGGTTTAA

Protein Sequence:

>RC230152 representing NM_001167594
 Red=Cloning site Green=Tags(s)

MTSSPRAPPGEQGRGAEMIRAAPPPLLLLLLLLLLVSWASRGEAAPDQDEIQRLPGLAKQPSFRQYSG
 YLKGSGSKHLHYWFVESQKDPENSPVVLWLNNGPGCSSLDGLL TEHGPFLLIANVLYLESPAGVGFYSDD
 KFYATNDTEVAQSNFEALQDFRFLFPEYKNNKLF LTGESYAGIYIPTLAVLVMQDPSMNLQGLAVGNLS
 SYEQNDNSLVYFAYYHGLLGNRLWSSLQTHCCSQNKNCFYDNKDLECVTNLQEVARIVGNSGLNIYNLYA
 PCAGGVPSHFRYEKDTVVVQDLGNIFTRLPLKRMWHQALLRSGDKVRMDPPCTNTTAASTYLNNPYVRKA
 LNIPEQLPQWDMCNFLVNLQYRRLYRSMNSQYLKLLSSQKYQILLYNGDVDMACNFMGDEWFVDSL NQKM
 EVQRRPWL VKYGDSEQIAGFVKEF SHIAFLTIKAGHMVPTDKPLAAFTMFSRFLNKQPY

TRTRPLEQKLI SEEDLAANDILDYKDDDDKV

Chromatograms:

https://cdn.origene.com/chromatograms/mk8062_g04.zip

Restriction Sites:

Sgfl-Mlul

Cloning Scheme:


ACCN: NM_001167594

ORF Size: 1443 bp

OTI Disclaimer: The molecular sequence of this clone aligns with the gene accession number as a point of reference only. However, individual transcript sequences of the same gene can differ through naturally occurring variations (e.g. polymorphisms), each with its own valid existence. This clone is substantially in agreement with the reference, but a complete review of all prevailing variants is recommended prior to use. [More info](#)

OTI Annotation: This clone was engineered to express the complete ORF with an expression tag. Expression varies depending on the nature of the gene.

Components: The ORF clone is ion-exchange column purified and shipped in a 2D barcoded Matrix tube containing 10ug of transfection-ready, dried plasmid DNA (reconstitute with 100 ul of water).

Reconstitution Method:

1. Centrifuge at 5,000xg for 5min.
2. Carefully open the tube and add 100ul of sterile water to dissolve the DNA.
3. Close the tube and incubate for 10 minutes at room temperature.
4. Briefly vortex the tube and then do a quick spin (less than 5000xg) to concentrate the liquid at the bottom.
5. Store the suspended plasmid at -20°C. The DNA is stable for at least one year from date of shipping when stored at -20°C.

RefSeq: [NM_001167594.2](#), [NP_001161066.1](#)

RefSeq ORF: 1446 bp

Locus ID: 5476

UniProt ID: [P10619](#)

Cytogenetics: 20q13.12

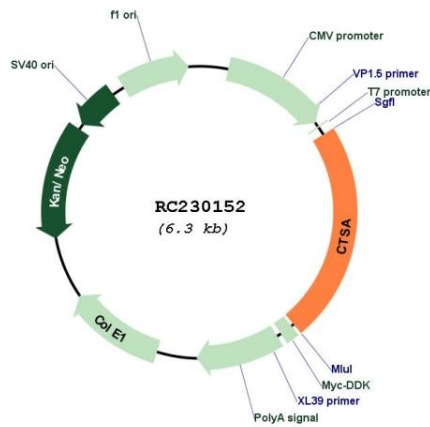
Protein Families: Druggable Genome, Protease

Protein Pathways: Renin-angiotensin system

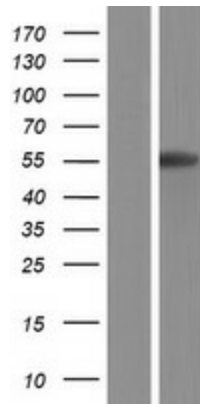
MW: 54.7 kDa

Gene Summary: This gene encodes a member of the peptidase S10 family of serine carboxypeptidases. Alternative splicing results in multiple transcript variants, at least one of which encodes a preproprotein that is proteolytically processed to generate two chains that comprise the heterodimeric active enzyme. This enzyme possesses deamidase, esterase and carboxypeptidase activities and acts as a scaffold in the lysosomal multienzyme complex. Mutations in this gene are associated with galactosialidosis. [provided by RefSeq, Nov 2015]

Product images:



Circular map for RC230152



Western blot validation of overexpression lysate (Cat# [LY433152]) using anti-DDK antibody (Cat# [TA50011-100]). Left: Cell lysates from untransfected HEK293T cells; Right: Cell lysates from HEK293T cells transfected with RC230152 using transfection reagent MegaTran 2.0 (Cat# [TT210002]).