

Product datasheet for **RC230149**

HPSE2 (NM_001166245) Human Tagged ORF Clone

Product data:

Product Type:	Expression Plasmids
Product Name:	HPSE2 (NM_001166245) Human Tagged ORF Clone
Tag:	Myc-DDK
Symbol:	HPSE2
Synonyms:	HPA2; HPR2; UFS; UFS1
Mammalian Cell Selection:	Neomycin
Vector:	pCMV6-Entry (PS100001)
E. coli Selection:	Kanamycin (25 ug/mL)



[View online »](#)

ORF Nucleotide Sequence:

>RC230149 representing NM_001166245
 Red=Cloning site Blue=ORF Green=Tags(s)

TTTTGTAATACGACTCACTATAGGGCGGCCGGAATTCGTGACTGGATCCGGTACCGAGGAGATCTGCC
 GCC**CGCATCGCC**

ATGAGGGTCTTTGTGCCTTCCCTGAAGCCATGCCTCCAGCAACTCCCGCCCCCGCGTGCCTAGCCC
 CGGGGCTCTCTACTTGGCTCTGTTGCTCCATCTCCTTTCTCCAGGCTGGAGACAGGAGACCCTT
 GCCTGTAGACAGAGCTGCAGTTTGAAGAAAAGACCCTGATTCTACTTGATGTGAGACCAAGAACCCA
 GTCAGGACAGTCAATGAGAACTTCTCTCTGACAGTGGATCCGTCCATCATTATGATGGCTGGCTCG
 ATTTCTAAGCTCCAAGCGCTTGGTGACCTGGCCGGGGACTTTCGCCGCTTCTGCGCTTCGGGGG
 CAAAAGGACCGACTTCTGCAGTCCAGAACCTGAGGAACCCGGGAAAAGCCGCGGGGGCCGGGCCCG
 GATTACTATCTCAAAAATATGAGGATGAGCCAAATAACTATCGGACCATGCATGGCCGGCAGTAAATG
 GCAGCCAGTTGGAAAGGATTACATCCAGCTGAAGAGCCTGTTGCAGCCCATCCGGATTTATTCCAGAGC
 CAGCTTATATGGCCCTAATATTGGCGGCCGAGGAAGAATGTCATCGCCCTCTAGATGGATTATGAAG
 GTGGCAGGAAGTACAGTAGATGCAGTTACTGGCAACATTGCTACATTGATGGCCGGGTGGTCAAGGTGA
 TGGACTTCTGAAAACCTGCCTGTTAGACACACTCTGACCAGATTAGGAAAATTCAGAAAAGTGGTTAA
 TACATACACTCCAGGAAAGAAGATTTGGCTTGAAGGTGTGGTGACCACCTCAGCTGGAGGCACAAACAAT
 CTATCCGATTCCTATGCTGCAGGATTCTTATGGTTGAACACTTTAGGAATGCTGGCCAATCAGGGCATTG
 ATGTCGTGATACGGCACTCATTTTTGACCATGGATAAATCACCTCGTGGACCAGAAATTTAACCCATT
 ACCAGACTACTGGCTCTCTCTCTACAAGCGCTGATCGGCCCAAAGTCTTGGCTGTGCATGTGGCT
 GGGCTCCAGCGGAAGCCACGGCCTGGCCGAGTGATCCGGGACAACTAAGATTTATGCTCACTGCACAA
 ACCACCACAACCAACTACGTTCTGGTCCATTACACTTTTTATCATCAACTGCATCAAGAAA
 GAAAATCAAGCTGGCTGGGACTCTCAGAGACAAGCTGGTTCAACAGTACCTGCTGCAGCCCTATGGGCAG
 GAGGGCTAAAGTCCAAGTCAAGTCAAGTGAATGGCCAGCCCTTAGTGTGGTGGACGACGGACCTCC
 CAGAATTGAAGCCCCGCCCTTCGGGCGGCCGACATTGGTCAATCCCTCCAGTACCATGGGCTTTTA
 TGTGGTCAAGAATGTCAATGCTTTGGCCTGCCGTACCGA

**ACCGGTACGCGGCCGCTCGAGCAGAACTCATCTCAGAAGAGGATCTGGCAGCAATGATATCCTGGATT
 ACAAGGATGACGACGATAAGGTTTAA**

Protein Sequence:

>RC230149 representing NM_001166245
 Red=Cloning site Green=Tags(s)

MRVLCAPPEAMPSSNSRPPACLAPGALYLALLHLSSLSSQAGDRRPLPVDRAAGLKEKTLILLDVSTKNP
 VRTVNENFLSLQLDPSIIHDGWLDFLSSKRLVTLARGLSPAFLRFGGKRTDFLQFNLRNPAKSRGGPGP
 DYYLKNYEDEPNRYRTMHGRAVNGSQLGKDYIQLKSLLPQIRIYSRASLYGPNIGRPRKNVIALLDGFMK
 VAGSTVDAVTWQHCYIDGRVVKVMDFLKTRLLDLSQIRKIQKVVNTYTPGKKIWLQEVVTTTSAAGTNN
 LSDSYAAGFLWNLGMLANQGDVIVIRHSFFDHGYNHLVDQNFNPLPDYWLSLLYKRLIGPKVLAHVHA
 GLQRKPRPGRVIRDKLRIYAHCTNHHNHNYVRSITLFIINLHRSRKKIKLAGTLRDKLVHQYLLQPYGQ
 EGLKSKSVQLNGQPLVMVDDGTLPELKPRLRAGRTLVIIPVMTMGFYVVKVNVNLAACRYR

TRTRPLEQKLISEEDLAANDILDYKDDDDKV

Chromatograms:

https://cdn.origene.com/chromatograms/mk8062_f09.zip

Restriction Sites:

SgfI-MluI

Cloning Scheme:


ACCN: NM_001166245

ORF Size: 1440 bp

OTI Disclaimer: The molecular sequence of this clone aligns with the gene accession number as a point of reference only. However, individual transcript sequences of the same gene can differ through naturally occurring variations (e.g. polymorphisms), each with its own valid existence. This clone is substantially in agreement with the reference, but a complete review of all prevailing variants is recommended prior to use. [More info](#)

OTI Annotation: This clone was engineered to express the complete ORF with an expression tag. Expression varies depending on the nature of the gene.

Components: The ORF clone is ion-exchange column purified and shipped in a 2D barcoded Matrix tube containing 10ug of transfection-ready, dried plasmid DNA (reconstitute with 100 ul of water).

Reconstitution Method:

1. Centrifuge at 5,000xg for 5min.
2. Carefully open the tube and add 100ul of sterile water to dissolve the DNA.
3. Close the tube and incubate for 10 minutes at room temperature.
4. Briefly vortex the tube and then do a quick spin (less than 5000xg) to concentrate the liquid at the bottom.
5. Store the suspended plasmid at -20°C. The DNA is stable for at least one year from date of shipping when stored at -20°C.

RefSeq: [NM_001166245.1](#), [NP_001159717.1](#)

RefSeq ORF: 1443 bp

Locus ID: 60495

UniProt ID: [Q8WWQ2](#)

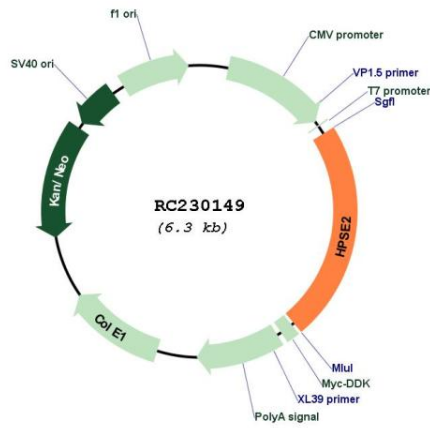
Cytogenetics: 10q24.2

Protein Pathways: Glycosaminoglycan degradation, Metabolic pathways

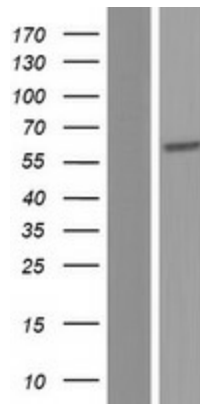
MW: 54.4 kDa

Gene Summary: This gene encodes a heparanase enzyme. The encoded protein is a endoglycosidase that degrades heparin sulfate proteoglycans located on the extracellular matrix and cell surface. This protein may be involved in biological processes involving remodeling of the extracellular matrix including angiogenesis and tumor progression. Alternate splicing results in multiple transcript variants. [provided by RefSeq, Oct 2009]

Product images:



Circular map for RC230149



Western blot validation of overexpression lysate (Cat# [LY433149]) using anti-DDK antibody (Cat# [TA50011-100]). Left: Cell lysates from untransfected HEK293T cells; Right: Cell lysates from HEK293T cells transfected with RC230149 using transfection reagent MegaTran 2.0 (Cat# [TT210002]).