

## Product datasheet for **RC230142**

### PIGT (NM\_001184730) Human Tagged ORF Clone

#### Product data:

Product Type:	Expression Plasmids
Product Name:	PIGT (NM_001184730) Human Tagged ORF Clone
Tag:	Myc-DDK
Symbol:	PIGT
Synonyms:	CGI-06; MCAHS3; NDAP; PNH2
Mammalian Cell Selection:	Neomycin
Vector:	pCMV6-Entry (PS100001)
E. coli Selection:	Kanamycin (25 ug/mL)



[View online »](#)

**ORF Nucleotide Sequence:**

>RC230142 representing NM\_001184730  
 Red=Cloning site Blue=ORF Green=Tags(s)

TTTTGTAATACGACTCACTATAGGGCGGCCGGGAATTCGTCGACTGGATCCGGTACCGAGGAGATCTGCC  
 GCC**GCGATCGCC**

ATGGCGCGGCTATGCCGCTTGTCTGCTCGCTCTGTTGCTCCTGGGGCCCGCGGCTGGTGCCTTGACG  
 AACCCACACGCGACAGCCTGCGGGAGGAACTTGTATCACCCCGCTGCCTTCCGGGGACGTAGCCGCCAC  
 ATTCCAGTTCGACGCGCTGGGATTTCGGAGCTTACGCGGAAGGAGACTGACCACTACTTTCTGCGC  
 TATGCTGTGCTGCCGCGGAGGTGGTCTGCACCGAAAACCTACCCCTGGAAGAAGCTCTTGCCCTGTA  
 GTTCCAAGGCAGGCCTCTCTGTGCTGCTGAAGGCAGATCGCTTGTCCACACCAGCTACCACTCCCAGGC  
 AGTGCATATCCGCCCTGTTTGCAGAAATGCACGCTGTACTAGCATCTCCTGGGAGCTGAGGCAGACCCTG  
 TCAGTTGATTTGATGCCTTCATACGGGGCAGGGAAAGAAAGACTGGTCCCTCTCCGGATGTTCTCCC  
 GAACCCTACGGAGCCCTGCCCTGGCTTACAGAGCCGAGTCTATGTGGACATCACCACTACAACCA  
 GGACAACGAGACATTAGAGGTGCACCCACCCCGACCACTACATATCAGGACGTCATCCTAGGCACTCGG  
 AAGACCTATGCCATCTATGACTTGTGACACCGCCATGATCAACAACCTCGAAACCTCAACATCCAGC  
 TCAAGTGAAGAGACCCCAAGAGATGAGGCCCGCCAGTGCCTTCTGCATGCCAGCGGTACGTGAG  
 TGGCTATGGGCTGCAGAAGGGGAGCTGAGCACACTGCTGTACAACCCACCCATACCGGGCTTCCC  
 GTGCTGCTGCTGGACACCGTACCCTGGTATCTGCGGCTGTATGTGCACACCCCTACCATCACCTCAAGG  
 GCAAGGAGAACAACCAAGTTACATCCACTACCAGCCTGCCAGGACCGGCTGCAACCCACCTCCTGGA  
 GATGCTGATTAGCTGCCGGCAACTCAGTCACCAAGTTTCCATCCAGTTTGAAGCGGGCTGCTGAAG  
 TGGACCGAGTACACGCCAGATCCCTAACCATGGCTTCTATGTACGCCATCTGCTCAGCGCCCTGTGC  
 CCAGCATGGTAGCAGCAAGCAGTGGACTGGGAAGAGAGTCCCCTCTTCAACAGCCTGTCCCAGTCTC  
 TGATGGCTCTAACTACTTTGTGCGGCTCTACACGGAGCCGCTGCTGGTGAACCTGCCGACACCGGACTTC  
 AGCATGCCCTAACAGTATCTGCCTCACGTGCACTGTGGTGGCCGTGTGCTATGGCTCCTTCTACAATC  
 TCCTACCCGAACCTTCCACATCGAGGAGCCCGCACAGGTGGCCTGGCCAAGCGGCTGGCCAACCTTAT  
 CCGGCGCGCCGAGGTGTCCCCCACTC

**ACGCGT**ACGCGGCCGCTCGAGCAGAACTCATCTCAGAAGAGGATCTGGCAGCAAATGATATCCTGGATT  
 ACAAGGATGACGACGATAAGGTTTAA

**Protein Sequence:**

>RC230142 representing NM\_001184730  
 Red=Cloning site Green=Tags(s)

MAAAMPLALLVLLLLGPGGWCLAEPDRSLREELVITPLPSGDVAATFQFRTRWDESELQREGDTHYFLR  
 YAVLPREVVCTENLTPWKLLPCSSKAGLSVLLKADRLFHTSYHSQAVHIRPVCARNARCTISWELRQTL  
 SVVDFAFITGQKKDWSLFRMFRTLEPCPLASESRVYVDITTYNQDNETLEVHPPPTTTYQDVLGTR  
 KTYAIYDLLDTAMINNSRNLNIQLKWKRPENEAAPPVFLHAQRYVSGYGLQKGLSTLLYNTHPYRAFP  
 VLLLDTPWYLRLYVHTLTITSKGKPKPSYIHYQPAQDRLQPHLLEMLIQLPANSVTKVSIQFERALLK  
 WTEYTPDPNHGFYVSPSVLSALVPSMVAAPVDWEESPLFNSLFPVSDGSNYFVRLYTEPLLVLNLPDPF  
 SMPYNVICLTCTVVAVCYGSFYNLLTRTFHIEEPTGGLAKRLANLIRRARGVPLP

**TR**TRPLEQKLISEEDLAANDILDYKDDDDKV

**Chromatograms:**

[https://cdn.origene.com/chromatograms/mk8007\\_e02.zip](https://cdn.origene.com/chromatograms/mk8007_e02.zip)

**Restriction Sites:**

Sgfl-MluI

**Cloning Scheme:**


**ACCN:** NM\_001184730

**ORF Size:** 1428 bp

**OTI Disclaimer:** The molecular sequence of this clone aligns with the gene accession number as a point of reference only. However, individual transcript sequences of the same gene can differ through naturally occurring variations (e.g. polymorphisms), each with its own valid existence. This clone is substantially in agreement with the reference, but a complete review of all prevailing variants is recommended prior to use. [More info](#)

**OTI Annotation:** This clone was engineered to express the complete ORF with an expression tag. Expression varies depending on the nature of the gene.

**Components:** The ORF clone is ion-exchange column purified and shipped in a 2D barcoded Matrix tube containing 10ug of transfection-ready, dried plasmid DNA (reconstitute with 100 ul of water).

**Reconstitution Method:**

1. Centrifuge at 5,000xg for 5min.
2. Carefully open the tube and add 100ul of sterile water to dissolve the DNA.
3. Close the tube and incubate for 10 minutes at room temperature.
4. Briefly vortex the tube and then do a quick spin (less than 5000xg) to concentrate the liquid at the bottom.
5. Store the suspended plasmid at -20°C. The DNA is stable for at least one year from date of shipping when stored at -20°C.

**RefSeq:** [NM\\_001184730.3](#)

**RefSeq ORF:** 1431 bp

**Locus ID:** 51604

**UniProt ID:** [Q969N2](#)

**Cytogenetics:** 20q13.12

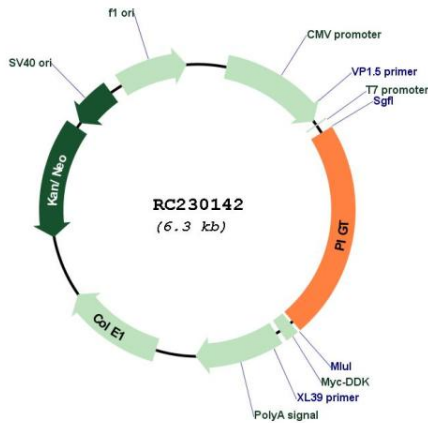
**Protein Families:** Transmembrane

**Protein Pathways:** Glycosylphosphatidylinositol(GPI)-anchor biosynthesis, Metabolic pathways

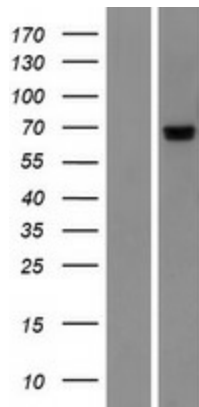
**MW:** 54.6 kDa

**Gene Summary:** This gene encodes a protein that is involved in glycosylphosphatidylinositol (GPI)-anchor biosynthesis. The GPI-anchor is a glycolipid found on many blood cells and serves to anchor proteins to the cell surface. This protein is an essential component of the multisubunit enzyme, GPI transamidase. GPI transamidase mediates GPI anchoring in the endoplasmic reticulum, by catalyzing the transfer of fully assembled GPI units to proteins. Alternatively spliced transcript variants encoding multiple isoforms have been observed for this gene. [provided by RefSeq, May 2012]

**Product images:**



Circular map for RC230142



Western blot validation of overexpression lysate (Cat# [LY433142]) using anti-DDK antibody (Cat# [TA50011-100]). Left: Cell lysates from untransfected HEK293T cells; Right: Cell lysates from HEK293T cells transfected with RC230142 using transfection reagent MegaTran 2.0 (Cat# [TT210002]).