

Product datasheet for **RC230139**

MFSD1 (NM_001167903) Human Tagged ORF Clone

Product data:

Product Type:	Expression Plasmids
Product Name:	MFSD1 (NM_001167903) Human Tagged ORF Clone
Tag:	Myc-DDK
Symbol:	MFSD1
Synonyms:	Minerva; SMAP4
Mammalian Cell Selection:	Neomycin
Vector:	pCMV6-Entry (PS100001)
E. coli Selection:	Kanamycin (25 ug/mL)



[View online »](#)

ORF Nucleotide Sequence:

>RC230139 representing NM_001167903
 Red=Cloning site Blue=ORF Green=Tags(s)

TTTTGTAATACGACTCACTATAGGGCGGCCGGAATTCGTCGACTGGATCCGGTACCGAGGAGATCTGCC
 GCC**CGCATCGCC**

ATGGCGTGGCCCTGCGTGACCTGCCGGGCGTCACTGAGCTCCCGAGTCATGTGACCGCCTTTGA
 CAGTGTTCCACGGGCGCTGCTTCTGCCTGGGTTTGGAGTTGTCACCACTTTCCCTCTCCGTCTCCTGC
 GGGCGCAATGGAGGAGGAGGATGAGGAAGCGGGCGCTCCTGGCAGGGCCCTGACGAGGCCACAGA
 GGTGCCCGGCCGCCCTGGAGCCCTGCCGGCCCTCTGCGACCCAGTCGCTGGCGCACCGGCTTTTGG
 TGCTGTTACTGATGTGCTTCTTGGCTTTGCTATTTTTGCTATGATAATCCTGCTGCCCTCAGACTCAA
 GTTAAACGAATGGGCGACAATCATTTTTAGCTGCTTTGTTTGCATTGGACAGTTGTTTTGCCCTGGGT
 GGAATATTTAATGCTTTTTGGCTGATGGAATTTGGAAGATTTGATTTGGGATTGGTGGCAGTCCCTAG
 CAGTTGCCAGAATACATATGCTGTGAGCTGGTTAAAGGCAAAGAATTAACCTGGTGTGGACTTCA
 ACTTAGCATGGCTAGAATTGGAAGTACAGTAAACATGAACCTCATGGGATGGCTGTATTCTAAGATTGAA
 GCTTTGTTAGGTTCTGCTGGTCACACAACCTCGGGATCACACTATGATTGGGGGTATAACGTGTATTC
 TTTCACTAATCTGTGCCTTGGCTCTTGCCTACTTGGATCAGAGAGCAGAGAGAATCCTTCATAAAGAACA
 AGGAAAAACAGGTGAAGTTATTAATAAATACTGATGTAAGGACTTCTCCTTACCCCTGTGGCTTATATTT
 ATCATCTGTGCTGCTATTATGTTGCTGTGCCCTTTTATTGGACTTGGGAAAGTTTTCTTTACAGAGA
 AATTTGGATTTTCTTCCAGGCAGCAAGTGAATTAACAGTGTGTATATGTCATATCAGCTCCCATGTC
 CCCGGTGTGGGCTCCTGGTGGATAAAACAGGGAAGAACATCATCTGGGTTCTTGGCAGTAGCAGCC
 ACTCTTGTGTCCACATGATGCTGGCCTTACGATGTGGAACCTTGGATTGCTATGTGCTTCTGGGAC
 TCTCCTACTCATTGCTTGCCTGTGCAATTTGGCAATGGTGGCATTGTAGTTCCTGAACATCAGTGGG
 AACTGCATATGGCTTCATGCAGTCCATTAGAATCCTGGGTTGGCCATCATTTCCATCATTGCTGGTATG
 ATACTGGATTCTCGGGGTATTTGTTTTTGAAGTGTCTTTCATTGCCTGTGTTCTTTGCACTTTTAT
 CTGTGGTCTTACTCTATTTGGTGAATCGTGCCAGGGTGGGAACCTAAATTATTCTGCAAGACAAAGGGA
 AGAAATAAAATTTCCCACTGAA

**ACGGTACGCGGCCGCTCGAGCAGAACTCATCTCAGAAGAGGATCTGGCAGCAATGATATCCTGGATT
 ACAAGGATGACGACGATAAGTTTAA**

Protein Sequence:

>RC230139 representing NM_001167903
 Red=Cloning site Green=Tags(s)

MGVALRDLPGRHVSSRSHVTAVLTVFHGRCFPLPGFVVTTFPSPSPAGAMEEEDDEEARALLAGGPDEADR
 GAPAAPGALPALCDPSRLAHRLLVLLLMCFLGFAIFAMIILLPFRLKLNWGTIIFSCFVCIGQVVFALG
 GIFNAFWLMEFGRFVFGIGGESLAVAQNTYAVSWFKGKELNLVFLQLSMARIGSTVNMNLMGWLYSKIE
 ALLGSAGHTTLGITLMIGGITCILSLICALALAYLDQRAERILHKEQGKTGEVIKLTVDKDFSLPLWIF
 IICVCYVAVFPFIFGLGKVFTEKFGFSSQAASAINSVYVVISAPMSPVFGLLVDKTKGNIWVLCVAA
 TLVSHMMLAFTMWPWIAMLLGLSYLLACALWPMVAFVPEHQLGTAYGMQSIQNLGLAIIISIIAGM
 ILDSRGLFLEVFFIACVSLLSVLLYLVNRAQGGNLYSARQREEIKFSHTE

TRTRPLEQKLISEEDLAANDILDYKDDDDKV

Chromatograms:

https://cdn.origene.com/chromatograms/ja1150_a04.zip

Restriction Sites:

Sgfl-MluI

Cloning Scheme:


ACCN: NM_001167903

ORF Size: 1425 bp

OTI Disclaimer: The molecular sequence of this clone aligns with the gene accession number as a point of reference only. However, individual transcript sequences of the same gene can differ through naturally occurring variations (e.g. polymorphisms), each with its own valid existence. This clone is substantially in agreement with the reference, but a complete review of all prevailing variants is recommended prior to use. [More info](#)

OTI Annotation: This clone was engineered to express the complete ORF with an expression tag. Expression varies depending on the nature of the gene.

Components: The ORF clone is ion-exchange column purified and shipped in a 2D barcoded Matrix tube containing 10ug of transfection-ready, dried plasmid DNA (reconstitute with 100 ul of water).

Reconstitution Method:

1. Centrifuge at 5,000xg for 5min.
2. Carefully open the tube and add 100ul of sterile water to dissolve the DNA.
3. Close the tube and incubate for 10 minutes at room temperature.
4. Briefly vortex the tube and then do a quick spin (less than 5000xg) to concentrate the liquid at the bottom.
5. Store the suspended plasmid at -20°C. The DNA is stable for at least one year from date of shipping when stored at -20°C.

Note: Plasmids are not sterile. For experiments where strict sterility is required, filtration with 0.22um filter is required.

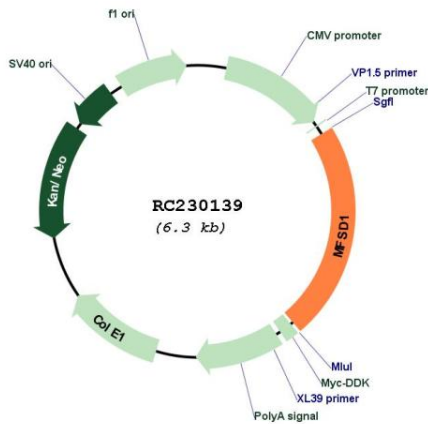
RefSeq: [NM_001167903.1](#), [NP_001161375.1](#)

RefSeq ORF: 1281 bp

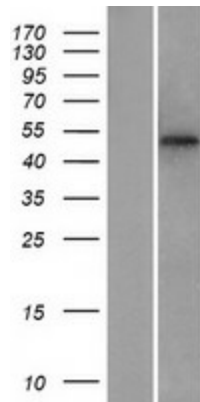
Locus ID: 64747

UniProt ID: [Q9H3U5](#)

Cytogenetics: 3q25.32
Protein Families: Transmembrane
MW: 52.1 kDa
Gene Summary: Lysosomal transporter which is essential for liver homeostasis. Required to maintain stability and lysosomal localization of GLMP.[UniProtKB/Swiss-Prot Function]

Product images:


Circular map for RC230139



Western blot validation of overexpression lysate (Cat# [LY433139]) using anti-DDK antibody (Cat# [TA50011-100]). Left: Cell lysates from untransfected HEK293T cells; Right: Cell lysates from HEK293T cells transfected with RC230139 using transfection reagent MegaTran 2.0 (Cat# [TT210002]).