

## Product datasheet for **RC230126**

### **CEACAM1 (NM\_001184815) Human Tagged ORF Clone**

#### **Product data:**

|                           |   |
|---------------------------|---|
| Product Type:             | Expression Plasmids                           |
| Product Name:             | CEACAM1 (NM_001184815) Human Tagged ORF Clone |
| Tag:                      | Myc-DDK                                       |
| Symbol:                   | CEACAM1                                       |
| Synonyms:                 | BGP; BGP1; BGPI                               |
| Mammalian Cell Selection: | Neomycin                                      |
| Vector:                   | pCMV6-Entry (PS100001)                        |
| E. coli Selection:        | Kanamycin (25 ug/mL)                          |



[View online »](#)

**ORF Nucleotide Sequence:**

>RC230126 representing NM\_001184815  
 Red=Cloning site Blue=ORF Green=Tags(s)

TTTTGTAATACGACTCACTATAGGGCGGCCGGAATTCGTCGACTGGATCCGGTACCGAGGAGATCTGCC  
 GCC**GCGATCGCC**

ATGGGGCACCTCTCAGCCCCACTTCACAGAGTGCCTGTACCCTGGCAGGGGCTTCTGCTCACAGCCTCAC  
 TTCTAACCTTCTGGAACCGCCACCAGCTGCCAGCTCACTACTGAATCCATGCCATTCAATGTTGCAGA  
 GGGGAAGGAGGTTCTTCTCCTTGTCCACAATCTGCCCCAGCAACTTTTTGGCTACAGCTGGTACAAAGGG  
 GAAAGAGTGGATGGCAACCGTCAAATTGTAGGATATGCAATAGGAACTCAACAAGCTACCCAGGGCCCG  
 CAAACAGCGGTGAGAGACAATATACCCCAATGCATCCCTGCTGATCCAGAACGTACCCAGAATGACAC  
 AGGATTCTACACCCTACAAGTCATAAAGTCAGATCTTGTGAATGAAGAAGCAACTGGACAGTTCATGTA  
 TACCCGGAGCTGCCAAGCCCTCCATCTCCAGCAACAACCTCAACCCCTGTGGAGGACAAGGATGCTGTGG  
 CCTTCACTGTGAACCTGAGACTCAGGACACAACCTACCTGTGGTGGATAAACAATCAGAGCCTCCCGGT  
 CAGTCCCAGGCTGCAGCTGTCCAATGGCAACAGGACCCTCACTCTACTCAGTGTACAAGGAATGACACA  
 GGACCCTATGAGTGTGAAATACAGAACCAGTGAAGTGCGAACCGCAGTGACCCAGTCACCTTGAATGTCA  
 CCTATGGCCCGGACACCCCAACATTTCCCTTCAGACACCTATTACCGTCCAGGGGCAAACCTCAGCCT  
 CTCTGCTATGCAGCCTTAACCCACCTGCACAGTACTCTGGCTTATCAATGGAACATTCAGCAAAGC  
 ACACAAGAGCTCTTTATCCCTAACATCACTGTGAATAATAGTGGATCCTATACCTGCCACGCCAATAACT  
 CAGTCACTGGCTGCAACAGGACCACAGTCAAGACGATCATAGTCACTGAGAGACAGAATCTCACCATGTT  
 ACCCAGGCTGGACTCGAAGTCTGGGCTCAAGCAATCTCCCATCTGTTCCCAAAGTGTGAGATTACA  
 GATAATGCTCTACCACAAGAAAATGGCCTCTCACCTGGGGCCATTGCTGGCATTGTGATTGGAGTAGTGG  
 CCCTGGTTGCTCTGATAGCAGTAGCCCTGGCATGTTTTCTGCATTTCCGGGAAGACCGGCAGGGCAAGCGA  
 CCAGCGTGATCTCACAGAGCACAAACCCTCAGTCTCCAACCACACTCAGGACCCTCCAATGACCCACCT  
 AAACAAGATGAATGAAGTTACTTATTCTACCCTGAAGTGAAGCCAGCAACCCACACAACCAACTTCAG  
 CCTCCCATCCCTAACAGCCACAGAAAATAATTTATTCAGAAGTAAAAAGCAG

**ACGCGT**ACGCGGCCGCTCGAGCAGAACTCATCTCAGAAGAGGATCTGGCAGCAAATGATATCCTGGATT  
 ACAAGGATGACGACGATAAGGTTTAA

**Protein Sequence:**

>RC230126 representing NM\_001184815  
 Red=Cloning site Green=Tags(s)

MGHLSAPLHRVVRVPWQGLLLTASLLTFWNPPTTAQLTTESMPFNVAEGKEVLLL VHNLPQQLFGYSWYKG  
 ERVDGNRQIVGYAIGTQQATPGPANSGRETIYPNASLLIQNVTQNDTGFYTLQVIKSDLVNEEATGQFHV  
 YPELPKPSISSNNSNPVEDKDAVAFTCEPETQDTTYLWWINNQSLPVSRLQLSNGNRTL TLLSVTRNDT  
 GPYECEIQNPVSANRSDPVTLNVTYGPDTPTIIPSDTYRPGANLSL SCYAASNPPAQYSWLINGTFQQS  
 TQELFIPNITVNNSGSYCHANNSVTGCNRTTVKTIIVTERQNL TMLPRLDSNSWAQAILPSVSQSAEIT  
 DNALPQENGLSPGAIAGIVIGVVALVALIAVALACFLHFHGKTGRASDQRDLTEHKPSVSNHTQDHSNDPP  
 NKMNEVYSTLNFEAQPTQPTSASPSTLATEI IYSEVKKQ

**TR**TRPLEQKLISEEDLAANDILDYKDDDDKV

**Chromatograms:**

[https://cdn.origene.com/chromatograms/mk8007\\_e06.zip](https://cdn.origene.com/chromatograms/mk8007_e06.zip)

**Restriction Sites:**

Sgfl-Mlul

**Cloning Scheme:**


**ACCN:** NM\_001184815

**ORF Size:** 1383 bp

**OTI Disclaimer:** The molecular sequence of this clone aligns with the gene accession number as a point of reference only. However, individual transcript sequences of the same gene can differ through naturally occurring variations (e.g. polymorphisms), each with its own valid existence. This clone is substantially in agreement with the reference, but a complete review of all prevailing variants is recommended prior to use. [More info](#)

**OTI Annotation:** This clone was engineered to express the complete ORF with an expression tag. Expression varies depending on the nature of the gene.

**Components:** The ORF clone is ion-exchange column purified and shipped in a 2D barcoded Matrix tube containing 10ug of transfection-ready, dried plasmid DNA (reconstitute with 100 ul of water).

**Reconstitution Method:**

1. Centrifuge at 5,000xg for 5min.
2. Carefully open the tube and add 100ul of sterile water to dissolve the DNA.
3. Close the tube and incubate for 10 minutes at room temperature.
4. Briefly vortex the tube and then do a quick spin (less than 5000xg) to concentrate the liquid at the bottom.
5. Store the suspended plasmid at -20°C. The DNA is stable for at least one year from date of shipping when stored at -20°C.

**RefSeq:** [NM\\_001184815.2](#)

**RefSeq ORF:** 1386 bp

**Locus ID:** 634

**UniProt ID:** [P13688](#)

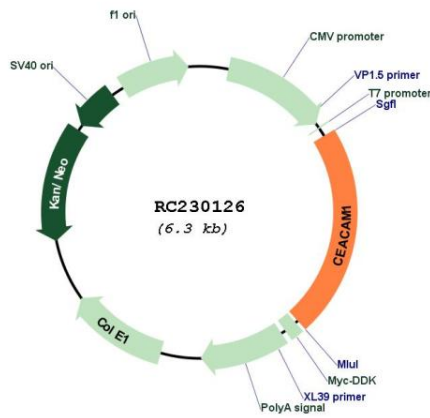
**Cytogenetics:** 19q13.2

**Protein Families:** Druggable Genome, Transmembrane

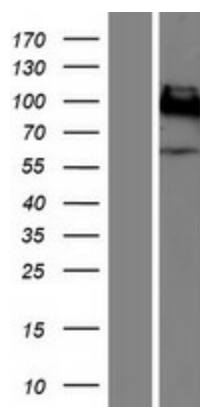
**MW:** 50.8 kDa

**Gene Summary:** This gene encodes a member of the carcinoembryonic antigen (CEA) gene family, which belongs to the immunoglobulin superfamily. Two subgroups of the CEA family, the CEA cell adhesion molecules and the pregnancy-specific glycoproteins, are located within a 1.2 Mb cluster on the long arm of chromosome 19. Eleven pseudogenes of the CEA cell adhesion molecule subgroup are also found in the cluster. The encoded protein was originally described in bile ducts of liver as biliary glycoprotein. Subsequently, it was found to be a cell-cell adhesion molecule detected on leukocytes, epithelia, and endothelia. The encoded protein mediates cell adhesion via homophilic as well as heterophilic binding to other proteins of the subgroup. Multiple cellular activities have been attributed to the encoded protein, including roles in the differentiation and arrangement of tissue three-dimensional structure, angiogenesis, apoptosis, tumor suppression, metastasis, and the modulation of innate and adaptive immune responses. Multiple transcript variants encoding different isoforms have been reported, but the full-length nature of all variants has not been defined. [provided by RefSeq, May 2010]

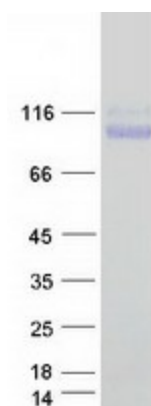
**Product images:**



Circular map for RC230126



Western blot validation of overexpression lysate (Cat# [LY433126]) using anti-DDK antibody (Cat# [TA50011-100]). Left: Cell lysates from untransfected HEK293T cells; Right: Cell lysates from HEK293T cells transfected with RC230126 using transfection reagent MegaTran 2.0 (Cat# [TT210002]).



Coomassie blue staining of purified CEACAM1 protein (Cat# [TP330126]). The protein was produced from HEK293T cells transfected with CEACAM1 cDNA clone (Cat# RC230126) using MegaTran 2.0 (Cat# [TT210002]).