

Product datasheet for **RC230125**

SERINC5 (NM_001174072) Human Tagged ORF Clone

Product data:

Product Type:	Expression Plasmids
Product Name:	SERINC5 (NM_001174072) Human Tagged ORF Clone
Tag:	Myc-DDK
Symbol:	SERINC5
Synonyms:	C5orf12; TPO1
Mammalian Cell Selection:	Neomycin
Vector:	pCMV6-Entry (PS100001)
E. coli Selection:	Kanamycin (25 ug/mL)



[View online »](#)

ORF Nucleotide Sequence:

>RC230125 representing NM_001174072
 Red=Cloning site Blue=ORF Green=Tags(s)

TTTTGTAATACGACTCACTATAGGGCGGCCGGAATTCGTCGACTGGATCCGGTACCGAGGAGATCTGCC
 GCC**CGCATCGCC**

ATGTCAGCTCAGTGTGCGGGCCAGCTGGCCTGCTGCTGTGGTCTGCAGGCTGCTCTCTGCTGTG
 ATTGCTGCCCCAGGATTCGGCAGTCCCTCAGCACCCGCTTCATGTACGCCCTCTACTTCATTCTGGTCGT
 CGTCTCTGCTGCATCATGATGTCAACAACCGTGGCTCACAAGATGAAAGAGCACATTCCTTTTTTTGAA
 GATATGTGTAAAGGCATTAAGCTGGTACACCTGTGAGAAGCTGGTGGGATATTCTGCCGTGTATAGAG
 TCTGTTTTGGAATGGCTTGTCTTCTTTATCTTCTGCTACTGACCTTGAAAATCAACAACAGCAAAAAG
 TTGTAGAGCTCATATTCACAATGGCTTTTGGTTCTTAAACTTCTGCTGTTGGGGCCATGTGCTCAGGA
 GCTTTCTTATTCCAGATCAGGACACCTTCTGAACGCCTGGCGTATGTGGAGCCGTCGGAGGCTTCC
 TCTTCATTGGCATCCAGCTCCTCTGCTCGTGGAGTTGCACATAAGTGAACAAGAAGCTGGACAGCAGG
 CACAGCCAGTAACAAGCTGTGGTACGCCTCCCTGGCCCTGGTACGCTCATCATGTATTCCATTGCCACT
 GGAGGCTTGGTTTTGATGGCAGTGTATACACAGAAAGACAGCTGCATGGAAAACAAAATTCTGCTGG
 GAGTAAATGGAGGCTGTGCCTGCTTATATCATTGGTAGCCATCTCACCTGGGTCCAAAATCGACAGCC
 ACACTCGGGGCTTTACAATCAGGGGTATAAGCTGCTATGTCACCTACCTCACCTTCTCAGCTCTGTCC
 AGCAAACCTGCAGAAGTAGTTCTAGATGAACATGGGAAAAATGTTACAATCTGTGTGCCTGACTTTGGTC
 AAGACCTGTACAGAGATGAAAACCTGGTACTATACTGGGGACCAGCCTTAAATCGGATGTATCTTGTA
 TTCATGTTTGACATCAACAACAAGATCGAGTCTGACGCTCTGCAGGGCGATACGCAGCTCCTGAATTG
 GAGATAGCTCGCTGTTGTTTTGCTTCAGTCTGGTGGAGAGGACACTGAAGAGCAGCAGCCGGGAAGG
 AGGGACCACGGGTCATTTATGACGAGAAGAAAGCACCCTACATCTACTCTACTTCCACTTCGTGTT
 CTTCTAGCTTCCCTGTATGTGATGATGACCGTACCAACTGGTTCAACTACGAAAGTGCCAACATCGAG
 AGCTTCTCAGCGGGAGCTGGTCCATCTTCTGGGTCAAGATGGCCTCCTGCTGGATATGCGTGTGTTG
 ACCTGTGTACGCTGGTCCTCCCTCTGCTGCCCCACCGGGAGTTCTCTGTG

ACGCGTACGCGGCCGCTCGAGCAGAAACTCATCTCAGAAGAGGATCTGGCAGCAAATGATATCCTGGATT
 ACAAGGATGACGACGATAAGGTTTAA

Protein Sequence:

>RC230125 representing NM_001174072
 Red=Cloning site Green=Tags(s)

MSAQCCAGQLACCCGSAGCSLCCDCCPRIRQSLSTRFMYALYFILVVVLCIMMSTTVAHKMKEHIPFFE
 DMCKGIKAGDTCEKLVGYSAYVRVCFGMACFFFIFCLLTLKINNSKSCRAHIHNGFWFFKLLLLGAMCSG
 AFFIPDQDTFLNAWRYVAVGGFLFIGIQLLLLVEFAHKWKNWTAGTASNKLWYASLALVTLIMYSIAT
 GGLVLMVAVFYTKDSCMENKILLGVNGLCLLISLVAISPWVQNRQPHSGLLQSGVISCYVYTLTFALS
 SKPAEVVLDHGNVTICVPDFGQDLYRDNLVILGTSLLIGCILYSCLTSTTRSSDALQGRYAPEL
 EIARCCFCFSPGGEDTEEQQPGKEGPRVIYDEKKGTVYIYSYFHFVFLASLYVMMTVTNWVFNYESANIE
 SFFSGSWSIFWVKMASCWICVLLYLCTLVAPLCCPTREFSV

TRTRPLEQKLISEEDLAANDILDYKDDDDKV

Chromatograms:

https://cdn.origene.com/chromatograms/mk8007_d02.zip

Restriction Sites:

Sgfl-Mlul

Cloning Scheme:


ACCN: NM_001174072

ORF Size: 1383 bp

OTI Disclaimer: Due to the inherent nature of this plasmid, standard methods to replicate additional amounts of DNA in E. coli are highly likely to result in mutations and/or rearrangements. Therefore, OriGene does not guarantee the capability to replicate this plasmid DNA. Additional amounts of DNA can be purchased from OriGene with batch-specific, full-sequence verification at a reduced cost. Please contact our customer care team at custsupport@origene.com or by calling 301.340.3188 option 3 for pricing and delivery.

The molecular sequence of this clone aligns with the gene accession number as a point of reference only. However, individual transcript sequences of the same gene can differ through naturally occurring variations (e.g. polymorphisms), each with its own valid existence. This clone is substantially in agreement with the reference, but a complete review of all prevailing variants is recommended prior to use. [More info](#)

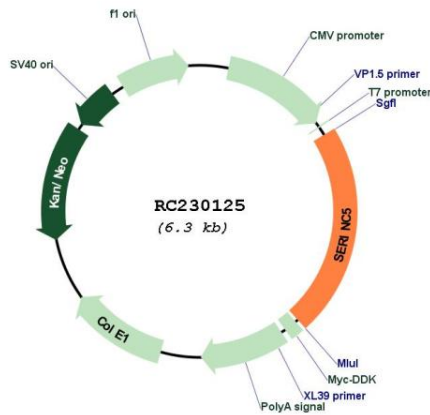
OTI Annotation: This clone was engineered to express the complete ORF with an expression tag. Expression varies depending on the nature of the gene.

Components: The ORF clone is ion-exchange column purified and shipped in a 2D barcoded Matrix tube containing 10ug of transfection-ready, dried plasmid DNA (reconstitute with 100 ul of water).

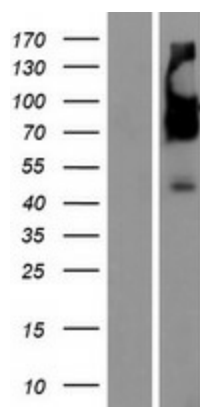
- Reconstitution Method:**
1. Centrifuge at 5,000xg for 5min.
 2. Carefully open the tube and add 100ul of sterile water to dissolve the DNA.
 3. Close the tube and incubate for 10 minutes at room temperature.
 4. Briefly vortex the tube and then do a quick spin (less than 5000xg) to concentrate the liquid at the bottom.
 5. Store the suspended plasmid at -20°C. The DNA is stable for at least one year from date of shipping when stored at -20°C.

Note:	Plasmids are not sterile. For experiments where strict sterility is required, filtration with 0.22um filter is required.
RefSeq:	<u>NM_001174072.3</u>
RefSeq ORF:	1386 bp
Locus ID:	256987
UniProt ID:	<u>Q86VE9</u>
Cytogenetics:	5q14.1
Protein Families:	Transmembrane
MW:	51.8 kDa
Gene Summary:	Restriction factor required to restrict infectivity of lentiviruses, such as HIV-1: acts by inhibiting an early step of viral infection. Impairs the penetration of the viral particle into the cytoplasm (PubMed:26416733, PubMed:26416734). Enhances the incorporation of serine into phosphatidylserine and sphingolipids. May play a role in providing serine molecules for the formation of myelin glycosphingolipids in oligodendrocytes (By similarity).[UniProtKB/Swiss-Prot Function]

Product images:



Circular map for RC230125



Western blot validation of overexpression lysate (Cat# [LY433125]) using anti-DDK antibody (Cat# [TA50011-100]). Left: Cell lysates from untransfected HEK293T cells; Right: Cell lysates from HEK293T cells transfected with RC230125 using transfection reagent MegaTran 2.0 (Cat# [TT210002]).