

Product datasheet for **RC230124**

Clusterin (CLU) (NM_001171138) Human Tagged ORF Clone

Product data:

Product Type:	Expression Plasmids
Product Name:	Clusterin (CLU) (NM_001171138) Human Tagged ORF Clone
Tag:	Myc-DDK
Symbol:	Clusterin
Synonyms:	AAG4; APOJ; CLI; KUB1; MGC24903; SGP-2; SGP2; SP-40; TRPM-2; TRPM2
Mammalian Cell Selection:	Neomycin
Vector:	pCMV6-Entry (PS100001)
E. coli Selection:	Kanamycin (25 ug/mL)



[View online »](#)

ORF Nucleotide Sequence:

>RC230124 representing NM_001171138
 Red=Cloning site Blue=ORF Green=Tags(s)

TTTTGTAATACGACTCACTATAGGGCGGCCGGGAATTCGTCGACTGGATCCGGTACCGAGGAGATCTGCC
 GCC**CGGATCGCC**

ATGGAGGCGTGCAAAGACTCCAGAATTGGAGGCATGATGAAGACTCTGCTGCTGTTTGTGGGGCTGCTGC
 TGACCTGGGAGAGTGGGCAGGTCTGGGGACCAGACGGTCTCAGACAATGAGCTCCAGGAAATGTCCAA
 TCAGGGAAGTAAAGTACGTCATAAAGGAAATTCAAAATGCTGTCAACGGGGTGAAACAGATAAAGACTCTC
 ATAGAAAAACAACGAAGAGCGCAAGACTGCTCAGCAACCTAGAAGAAGCCAAGAAGAAGAAAGAGG
 ATGCCCTAAATGAGACCAGGGAATCAGAGACAAAGCTGAAGGAGCTCCCAGGAGTGTGCAATGAGACCAT
 GATGGCCCTCTGGGAAGAGTGTAAAGCCCTGCCTGAAACAGACCTGCATGAAGTTCTACGCACGCGTCTGC
 AGAAGTGGCTCAGGCCTGGTTGGCCGACGCTTGAGGAGTTCTGAACCAGAGCTCGCCCTTCTACTTCT
 GGATGAATGGTGACCGCATCGACTCCCTGCTGGAGAACGACCGGCAGCAGACGCACATGCTGGATGTCAT
 GCAGGACCACTTCAGCCGCGCTCCAGCATCATAGACGAGCTCTCCAGGACAGGTTCTTACCCCGGGAG
 CCCAGGATACCTACCACTACCTGCCCTTCAGCCTGCCCCACCGAGGCCCTCACTTCTTCTTCCCAAGT
 CCCGCATCGTCCGAGCTTGATGCCCTTCTCCTGACGAGCCCTGAACTTCCACGCCATGTTCCAGCC
 CTTCTTGAGATGATACACGAGGCTCAGCAGGCCATGGACATCCACTTCCATAGCCCGGCCCTCCAGCAC
 CCGCAACAGAATTCATACGAGAAGGCGACGATGACCGGACTGTGTGCCGGGAGATCCGCCACAACCTCCA
 CGGGCTGCCTGCGGATGAAGGACCAGTGTGACAAGTGCCGGGAGATCTTGTCTGTGGACTGTTCCACCAA
 CAACCCCTCCAGGCTAAGCTGCGGCGGGAGCTCGACGAATCCCTCCAGGTGCTGAGAGTTGACCAGG
 AAATAACAACGAGCTGCTAAAGTCTACCAGTGAAGATGCTCAACACCTCCTCTTGTGGAGCAGCTGA
 ACGAGCAGTTTAACTGGGTGTCCCGCTGGCAAACCTCACGCAAGGCGAAGACCAGTACTATCTCCGGGT
 CACCACGGTGGCTTCCCACTTCTGACTCGGAGGTTCCCTCCGGTGTCACTGAGGTGGTGGTGAAGCTC
 TTTGACTCTGATCCCATCACTGTGACGGTCCCTGTAGAAGTCTCCAGGAAGAACCCTAAATTTATGGAGA
 CCGTGGCGGAGAAAGCGCTGCAGGAATACCGCAAAAAGCACCGGGAGGAG

AG**CGGACCG**ACGCGTACGCGGCCGCTCGAGCAGAACTCATCTCAGAAGAGGATCTGGCAGCAAATGATATCC
 TGGATTACAAGGATGACGACGATAAGGTTAA

Protein Sequence:

>RC230124 representing NM_001171138
 Red=Cloning site Green=Tags(s)

MEACKDSRIGGMMKTLLELVGLLLTWESGQVLGDQTVSDNELQEMSNQGSKYVNKEIQNAVNGVKQIKTL
 IEKTNEERKTLLEAKKKEDALNETRESETKLKELPVCNETMMALWEECKPCLKQTCMKFYARVC
 RSGSGLVGRQLEEFNLQSSPFYFWMNGDRIDSLLENDRQQTTHMLDVMQDHF SRASSIIDELFQDRFFTRE
 PQDTYHYLPLSLPHRRPHFFPKSRIVRSLMPFSPYEPLNFHAMFQPFLEMIHEAQAMDIFHSPAFQH
 PPTFEIREGDDRTVCREIRHNSTGCLRMDQCDKCREILSVDCSTNNPSQAKLRRELDLQVAERLTR
 KYNELLKSYQWKMLNTSSLLEQLNEQFNWVSRLANLTQGEDQYLRVTTVASHTSDSDVPSGVTEVVVKL
 FSDPITVTPVEVSRKNPKFMETVAEKALQEYRKKHREE

SGPTRRRLEQKLI SEEDLAANDILDYKDDDDKV

Chromatograms:

https://cdn.origene.com/chromatograms/mk8061_e04.zip

Restriction Sites:

Sgfl-RsrII

Cloning Scheme:


ACCN: NM_001171138

ORF Size: 1380 bp

OTI Disclaimer: The molecular sequence of this clone aligns with the gene accession number as a point of reference only. However, individual transcript sequences of the same gene can differ through naturally occurring variations (e.g. polymorphisms), each with its own valid existence. This clone is substantially in agreement with the reference, but a complete review of all prevailing variants is recommended prior to use. [More info](#)

OTI Annotation: This clone was engineered to express the complete ORF with an expression tag. Expression varies depending on the nature of the gene.

Components: The ORF clone is ion-exchange column purified and shipped in a 2D barcoded Matrix tube containing 10ug of transfection-ready, dried plasmid DNA (reconstitute with 100 ul of water).

Reconstitution Method:

1. Centrifuge at 5,000xg for 5min.
2. Carefully open the tube and add 100ul of sterile water to dissolve the DNA.
3. Close the tube and incubate for 10 minutes at room temperature.
4. Briefly vortex the tube and then do a quick spin (less than 5000xg) to concentrate the liquid at the bottom.
5. Store the suspended plasmid at -20°C. The DNA is stable for at least one year from date of shipping when stored at -20°C.

RefSeq: [NM_001171138.1](#), [NP_001164609.1](#)

RefSeq ORF: 1382 bp

Locus ID: 1191

Cytogenetics: 8p21.1

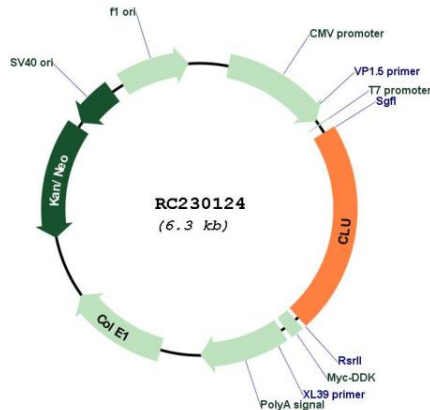
Protein Families: Druggable Genome, Secreted Protein

MW: 54.1 kDa

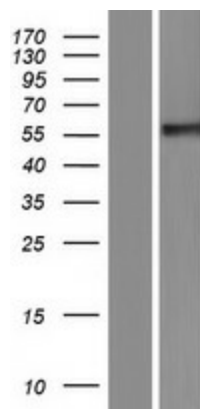
Gene Summary:

The protein encoded by this gene is a secreted chaperone that can under some stress conditions also be found in the cell cytosol. It has been suggested to be involved in several basic biological events such as cell death, tumor progression, and neurodegenerative disorders. Alternate splicing results in both coding and non-coding variants.[provided by RefSeq, May 2011]

Product images:



Circular map for RC230124



Western blot validation of overexpression lysate (Cat# [LY433124]) using anti-DDK antibody (Cat# [TA50011-100]). Left: Cell lysates from untransfected HEK293T cells; Right: Cell lysates from HEK293T cells transfected with RC230124 using transfection reagent MegaTran 2.0 (Cat# [TT210002]).