

Product datasheet for **RC230117**

PPP2R2A (NM_001177591) Human Tagged ORF Clone

Product data:

Product Type:	Expression Plasmids
Product Name:	PPP2R2A (NM_001177591) Human Tagged ORF Clone
Tag:	Myc-DDK
Symbol:	PPP2R2A
Synonyms:	B55A; B55ALPHA; PR52A; PR55A; PR55alpha
Mammalian Cell Selection:	Neomycin
Vector:	pCMV6-Entry (PS100001)
E. coli Selection:	Kanamycin (25 ug/mL)



[View online »](#)

ORF Nucleotide Sequence:

>RC230117 representing NM_001177591
 Red=Cloning site Blue=ORF Green=Tags(s)

TTTTGTAATACGACTCACTATAGGGCGGCCGGAATTCGTCGACTGGATCCGGTACCGAGGAGATCTGCC
 GCC**GCGATCGCC**

ATGTTCCCGAAGTTTTCTTCTGTTCTATGTTTCATGGAGCTGGAGGAGGAATGATATTCAGTGGTGTT
 TTTCTCAGGTGAAAGGAGCAGTAGATGATGTAGCAGAAGCAGATATAATTTCTACAGTAGAATTTAA
 TCATTCTGGAGAATTACTAGCAACAGGAGATAAAGGTGGTAGAGTTGTCATCTTTCAACAGGAGCAGGAG
 AACAAAATCCAGTCTCATAGCAGAGGAGATAAATGTTTACAGCACCTCCAGAGCCATGAACCAGAGT
 TTGACTACTTGAAAAGTTTAGAAATAGAAGAAAAGATCAACAAAATTAGTGTTACCCAGAAAATGC
 TGCTCAGTTTTTATTGTCTACCAATGATAAAACAATAAAATTATGGAAAATCAGTGAAAGGGACAAAAGA
 CCAGAAGGGTAACTTGAAAGAGGAGGATGGAAGGTATAGAGATCCTACTACAGTTACTACACTACGAG
 TGCCAGCTTTTAGGCCTATGGATCTAATGGTTGAGGCCAGTCCACGAAGAATATTTGCCAATGCTCATA
 ATATCACATCACTCAATTTCTATTAATAGTGATTATGAAACATATTTATCTGCAGATGATTTGCGGATT
 AATCTTTGGCATCTGAAATTACAGACAGGAGTTTTAACATTGTGGATATCAAGCCTGCCAATATGGAAG
 AGCTAACAGAGGTGATTACAGCAGCAGAATTTTCATCCAAACAGCTGTAACACATTTGTATACAGCAGCAG
 TAAAGGAACTATTCGGCTATGTGACATGAGGGCATCTGCCCTCTGTGATAGACATTTCAAATTTGTTGAA
 GAACCTGAAGATCCAGTAAACAGGTCATTTTTTTCCGAAATCATCTCCTCTATTTCCGGATGTAAAATTC
 GCCATAGTGGTCGATATATGATGACTAGAGACTATTTGTGAGTCAAAAATTTGGGACTTAAATATGAAAA
 CAGGCCTGTGAAACATACCAGGTGCATGAATACCTCAGAAGTAACTCTGTTCACTGTATGAAAATGAC
 TGCATATTTGACAAATTTGAATGTTGTTGGAATGGATCTGACAGTGTGTCATGACTGGATCTTACAATA
 ATTTCTTCAGAAATGTTTACAGAAACACAAAGCGAGACATAACCCTAGAAGCATCGCGGAAAACATAA
 GCCTCGCACAGTTCTGAAGCCTCGCAAAGTCTGTGCAAGTGGCAAGCGAAAGAAAAGATGAAATAAGTGTT
 GACAGCCTAGACTTCAATAAGAAAATCCTTCACACAGCCTGGCACCCCAAGGAAAATATCATTGCCGTAG
 CTACTACAAACAATCTGTATATATTTCAAGACAAAGTGAAT

ACGCGTACGCGGCCGCTCGAGCAGAACTCATCTCAGAAGAGGATCTGGCAGCAAATGATATCCTGGATT
 ACAAGGATGACGACGATAAGGTTTAA

Protein Sequence:

>RC230117 representing NM_001177591
 Red=Cloning site Green=Tags(s)

MFPKFLRSMFHGAGGGNDIQWCFQVKGAVDDVAEADIISTVEFNHSGELLATGDKGGRVVIFQQEQE
 NKIQSHSRGEYNYSTFQSHEPEFDYLSLEIEEKINKIRWLPQKNAAQFLLSTNDKTIKWKISERDKR
 PEGYNLKEEDGRYRDPPTVTTLRVPVFRPMDLMVEASPRRIFANAHTYHINSISINSDYETYL SADDLRI
 NLWHLEITDRSFNIVDIK PANMEELTEVITAAEFHPNSCNTFVYSSKGTIRLCDMRASALCDRHSKLF
 EPEDPSNRSFFSEIISISDVKFSHSGRYMTRDYL SVKIWDLNMENRPVETYQVHEYLRSKLSLYEND
 CIFDKFECCWNGSDSVMTGSYNNFFRMRDNRKRDITLEASRENNKPRTVLKP RKVCASGKRKDEISV
 DSLDFNKKILHTAWHPKENIIAVATTNNLYIFQDKVN

TRTRPLEQKLISEEDLAANDILDYKDDDDKV

Chromatograms:

https://cdn.origene.com/chromatograms/mk8061_b12.zip

Restriction Sites:

Sgfl-Mlul

Cloning Scheme:


ACCN: NM_001177591

ORF Size: 1371 bp

OTI Disclaimer: The molecular sequence of this clone aligns with the gene accession number as a point of reference only. However, individual transcript sequences of the same gene can differ through naturally occurring variations (e.g. polymorphisms), each with its own valid existence. This clone is substantially in agreement with the reference, but a complete review of all prevailing variants is recommended prior to use. [More info](#)

OTI Annotation: This clone was engineered to express the complete ORF with an expression tag. Expression varies depending on the nature of the gene.

Components: The ORF clone is ion-exchange column purified and shipped in a 2D barcoded Matrix tube containing 10ug of transfection-ready, dried plasmid DNA (reconstitute with 100 ul of water).

Reconstitution Method:

1. Centrifuge at 5,000xg for 5min.
2. Carefully open the tube and add 100ul of sterile water to dissolve the DNA.
3. Close the tube and incubate for 10 minutes at room temperature.
4. Briefly vortex the tube and then do a quick spin (less than 5000xg) to concentrate the liquid at the bottom.
5. Store the suspended plasmid at -20°C. The DNA is stable for at least one year from date of shipping when stored at -20°C.

RefSeq: [NM_001177591.2](#)

RefSeq ORF: 1374 bp

Locus ID: 5520

UniProt ID: [P63151](#)

Cytogenetics: 8p21.2

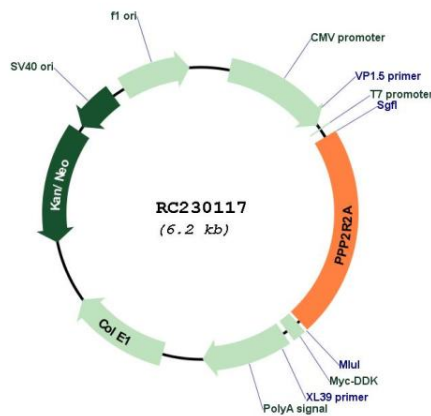
Protein Families: Druggable Genome, Phosphatase

Protein Pathways: Tight junction

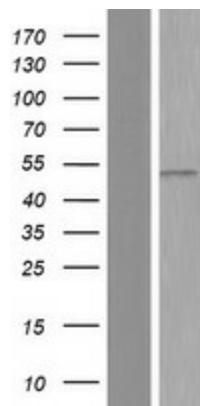
MW: 53.4 kDa

Gene Summary: The product of this gene belongs to the phosphatase 2 regulatory subunit B family. Protein phosphatase 2 is one of the four major Ser/Thr phosphatases, and it is implicated in the negative control of cell growth and division. It consists of a common heteromeric core enzyme, which is composed of a catalytic subunit and a constant regulatory subunit, that associates with a variety of regulatory subunits. The B regulatory subunit might modulate substrate selectivity and catalytic activity. This gene encodes an alpha isoform of the regulatory subunit B55 subfamily. Alternatively spliced transcript variants have been described. [provided by RefSeq, Apr 2010]

Product images:



Circular map for RC230117



Western blot validation of overexpression lysate (Cat# [LY433117]) using anti-DDK antibody (Cat# [TA50011-100]). Left: Cell lysates from untransfected HEK293T cells; Right: Cell lysates from HEK293T cells transfected with RC230117 using transfection reagent MegaTran 2.0 (Cat# [TT210002]).