

## Product datasheet for **RC230113**

### **BRUNOL6 (CELF6) (NM\_001172684) Human Tagged ORF Clone**

#### **Product data:**

Product Type:	Expression Plasmids
Product Name:	BRUNOL6 (CELF6) (NM_001172684) Human Tagged ORF Clone
Tag:	Myc-DDK
Symbol:	BRUNOL6
Synonyms:	BRUNOL6
Mammalian Cell Selection:	Neomycin
Vector:	pCMV6-Entry (PS100001)
E. coli Selection:	Kanamycin (25 ug/mL)



[View online »](#)



**ORF Nucleotide Sequence:**

>RC230113 representing NM\_001172684  
 Red=Cloning site Blue=ORF Green=Tags(s)

TTTTGTAATACGACTCACTATAGGGCGGCCGGGAATTCGTCGACTGGATCCGGTACCGAGGAGATCTGCC  
 GCC**CGGATCGC**

ATGGCCGCGCGCCGGGAGGGTCAGCGCAGCCGCTGGCCCCGGCCCGCCTGGGTTTCAGCACCGCGG  
 ACAGCGCGCTCGCATGAGCGGGCTAAACCCCGGTCCCGCGTACCCATGAAGGACCACGACGCCATCAA  
 GCTCTTCGTGGGCAGATCCCGCGGGCTTGGACGAGCAGGACCTCAAGCCGCTGTTTCGAGGAGTTCGGC  
 CGCATCTACGAGCTGACGGTGCTGAAGGACCGGCTCACCGGCTCCACAAAGGCTGTGCCTTCTCACCT  
 ACTGCGCCCGGACTCTGCTCTCAAGGCCAGAGTGCAGTGCACGAGCAGAAGACCCTGCCAGGGATGAA  
 TCGTCCGATCCAAGTGAAGCCAGCTGCCAGTGAAGGCGGAGGAGGACCGAAAGCTGTTTGTGGGGATG  
 CTGGGCAAGCAGCAGGGTGAAGGAGCAGTCAAGCGCTGTTCCAGCCCTTTGGCCACATCGAGGAGTGCA  
 CGGTCTCGGAGTCTGACGGCACCAGTAAAGGCTGTGCCTTTGTGAAGTTCGGGAGTCAAGGGGAAGC  
 TCAGGCGGCCATCCGGGTCTGACGCGCAGCCGACCATGGCGGGCGCCTCGTCCAGCCTCGTGGTCAAG  
 CTGGCGGACACCGACCGGAGCGCGCTGCGCGGATGCAGCAGATGGCCGGCCACCTGGCGCGCTTCC  
 ACCCGCGCCACTGCCGCTAGGGGCTGCGCGCCTACACCACGGCGATCCTGCAGCACCAGGCGGCCCT  
 GCTGGCGCGGCACAGGGCCAGGCCTAGGCCCGGTGGCGGCACTGGCGGCCAGATGCAACACGTGGCG  
 GCCTTTAGCCTGGTAGCTGCGCCTCTGTTGCCCGGCGAGCAGCAACTCCCGCCTGGCAGCGGCCCTG  
 GCACCCTCCAGGTCTTCCGGCGCCCATCGGGTCAATGGATTGCGCCCTCTGACCCCCAGACCAATGG  
 CCAGCCGGGCTCCGACACGCTCTACAATAACGGGCTCTCCCTTATCCAGCCAGAGCCCCGGCGTGGCT  
 GACCCCTGCAGCAGGCTACGCTGGGATGCACCACTACGAGGCCCCGAAGGCTGTAACTCTTCATCT  
 ATCACCTGCCTCAGGAGTTTGGTATGCGGAATCATACAGACATTCTGCCCTTTGGAGCCGTTGTCTC  
 TGCTAAAGTCTTTGTGGATCGAGCCACCAACCAGAGCAAGTGTTCGGGTTTGTAGTTTGGACCAATCCA  
 ACTAGTGGCCAGACTGCTATTACGGCGATGAATGGCTTTCAAATTGGCATGAAGAGGCTCAAGGTCCAGC  
 TAAAGCGGCCAAGGATGCCAACCGGCCTAC

**ACGCGT**ACGCGGCGGCTCGAGCAGAACTCATCTCAGAAGAGGATCTGGCAGCAAATGATATCCTGGATT  
 ACAAGGATGACGACGATAAGGTTTAA

**Protein Sequence:**

>RC230113 representing NM\_001172684  
 Red=Cloning site Green=Tags(s)

MAAAPGGSAPAGPGPRLGFSTADSGVMSGLNPGPAVPMKDHDIAIKLFVGQIPRGLDEQDLKPLFEEFG  
 RIYELTVLKDRLTGLHKGAFLTYCARDSALKAQSALHEQKTLPGMNRPIQVKPAASEGRGEDRKLFGVM  
 LGKQQGEEDVRRLFQPFGHIEECTVLRSPDGTSGKCAFVKFGSQGEAQAAIRGLHGSRTMAGASSSLVVK  
 LADTDRELRALRRMQMAGHLGAFHPAPLPLGACGAYTTAILQHQAALLAAQGPGLGPVAAVAAQMQHVA  
 AFSLVAAPLLPAAAANSPPGSGPGTLPGLPAPIGVNFGPLTPQTNGQPGSDTLYNNGLSPYPAQSPGVA  
 DPLQQAYAGMHYAGPEGCNLFYHLPQEFGDAELIQTFLPFGAVVSAKVFVDRATNQSCKCFGVVSFDNP  
 TSAQTAIQAMNGFQIGMKRLKVQLKRPKDANRPY

**TR**TRPLEQKLISEEDLAANDILDYKDDDDKV

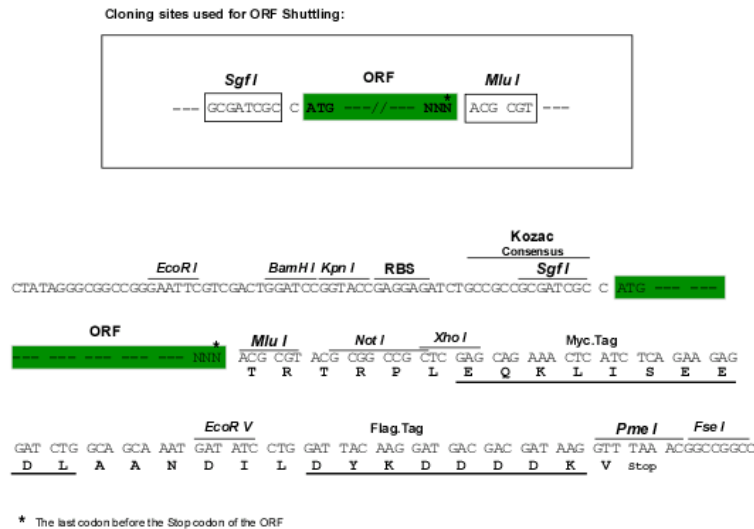
**Chromatograms:**

[https://cdn.origene.com/chromatograms/mk8061\\_a10.zip](https://cdn.origene.com/chromatograms/mk8061_a10.zip)

**Restriction Sites:**

Sgfl-MluI



**Cloning Scheme:**


**ACCN:** NM\_001172684

**ORF Size:** 1362 bp

**OTI Disclaimer:** The molecular sequence of this clone aligns with the gene accession number as a point of reference only. However, individual transcript sequences of the same gene can differ through naturally occurring variations (e.g. polymorphisms), each with its own valid existence. This clone is substantially in agreement with the reference, but a complete review of all prevailing variants is recommended prior to use. [More info](#)

**OTI Annotation:** This clone was engineered to express the complete ORF with an expression tag. Expression varies depending on the nature of the gene.

**Components:** The ORF clone is ion-exchange column purified and shipped in a 2D barcoded Matrix tube containing 10ug of transfection-ready, dried plasmid DNA (reconstitute with 100 ul of water).

**Reconstitution Method:**

1. Centrifuge at 5,000xg for 5min.
2. Carefully open the tube and add 100ul of sterile water to dissolve the DNA.
3. Close the tube and incubate for 10 minutes at room temperature.
4. Briefly vortex the tube and then do a quick spin (less than 5000xg) to concentrate the liquid at the bottom.
5. Store the suspended plasmid at -20°C. The DNA is stable for at least one year from date of shipping when stored at -20°C.

**RefSeq:** [NM\\_001172684.1](#), [NP\\_001166155.1](#)

**RefSeq ORF:** 1365 bp

**Locus ID:** 60677

**UniProt ID:** [Q96J87](#)

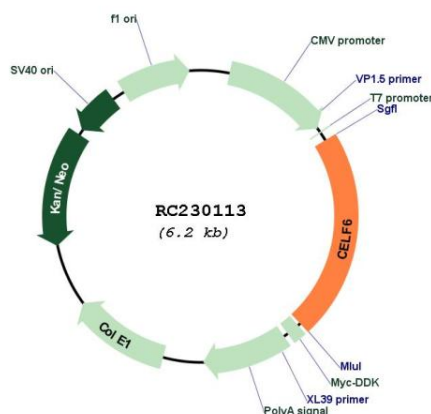
**Cytogenetics:** 15q23

**MW:** 48 kDa

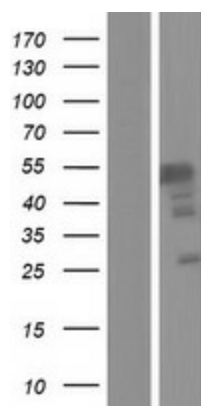


**Gene Summary:**

Members of the CELF/BRUNOL protein family contain two N-terminal RNA recognition motif (RRM) domains, one C-terminal RRM domain, and a divergent segment of 160-230 aa between the second and third RRM domains. Members of this protein family regulate pre-mRNA alternative splicing and may also be involved in mRNA editing, and translation. Multiple alternatively spliced transcript variants encoding different isoforms have been identified in this gene. [provided by RefSeq, Feb 2010]

**Product images:**


Circular map for RC230113



Western blot validation of overexpression lysate (Cat# [LY433113]) using anti-DDK antibody (Cat# [TA50011-100]). Left: Cell lysates from untransfected HEK293T cells; Right: Cell lysates from HEK293T cells transfected with RC230113 using transfection reagent MegaTran 2.0 (Cat# [TT210002]).