

## Product datasheet for **RC230106**

### CP2c (TFCP2) (NM\_001173453) Human Tagged ORF Clone

#### Product data:

Product Type:	Expression Plasmids
Product Name:	CP2c (TFCP2) (NM_001173453) Human Tagged ORF Clone
Tag:	Myc-DDK
Symbol:	CP2c
Synonyms:	LBP1C; LSF; LSF1D; SEF; TFCP2C
Mammalian Cell Selection:	Neomycin
Vector:	pCMV6-Entry (PS100001)
E. coli Selection:	Kanamycin (25 ug/mL)



[View online »](#)

**ORF Nucleotide Sequence:**

>RC230106 representing NM\_001173453  
 Red=Cloning site Blue=ORF Green=Tags(s)

TTTTGTAATACGACTCACTATAGGGCGGCCGGAATTCGTCGACTGGATCCGGTACCGAGGAGATCTGCC  
 GCC**CGGATCGCC**

ATGGCCTGGGCTCTGAAGCTGCCTCTGGCCGACGAAGTATTGAATCCGGTTGGTGCAGGACTTTGATG  
 CTAGCCTGTCGGGATCGGCCAGGAAGTGGTGCCTATAGCATGAGTGTCTTGCATTGCC  
 CATTNTTAAAGCAAGAAGAGTTCGAGTTTGCCTCCTGATAATGAGAATAAAATCCTGCCTTTCAATATGTG  
 CTTTGTGCTGCTACCTCTCCAGCAGTGAAGTCCATGATGAAACCCTAACGTATCTCAATCAAGGACAGT  
 CTTATGAAATTCGAATGCTAGACAATAGGAACTTGGAGAAGTCCAGAAATTAATGGCAAATTTGGTAA  
 GAGTATATTCCGTGTGGTGTCCATGACAGAAGGCTTCAGTACACTGAGCATCAGCAGCTAGAGGGCTGG  
 AGGTGGAACCGACCTGGAGACAGAATTCCTGACATAGATATCCCGATGTCTGTGGGTATAATCGATCCTA  
 GGGCTAATCCAACCACTAAATACAGTGGAGTTCCTGTGGGACCCTGCAAAGAGGACATCTGTGTTTAT  
 TCAGCCAAAGGTGCAGACAGAAAGCAAAAACGGATAGGGAAAAATGGAGAAACGAACACCTCATGAA  
 AAGGAGAAATATCAGCCTTCCTATGAGACAACCACTACAGAGTGTCTCCATGGCCCGAGATCACGT  
 ATGTCAATAACTCCCATCACCTGGCTTCAACAGTTCCTATAGCAGTTTTTCTCTTGGGGAGGAAATGG  
 TTCACCAAACACCAGCCAGAGCCACCCCTCCAGTACAGATAAACCCTTACCAACAACCACACCTCAG  
 GAAGCTCAGCAGTGGTTGCATCGAAATCGTTTTTCTACATTACAAAGGCTTTTACAAACTTCTCAGGGG  
 CAGATTTATTGAAATTAAGTAGAGATGATGTGATCCAAATCTGTGGCCCTGCAGATGGAATCAGACTTTT  
 TAATGCATTAAGGCGCGATGGTGCCTCAAGGTTAACCATTTATGTTTGTGAGAACTCACTGCAGTTG  
 AGGAGCAGCAACAACAGCAGCAACAGCAGCAGAAGCATGAGGATGGAGACTCAAATGGTACTTTCT  
 TCGTTTACCATGCTATCTATAGAAGAACTAACAGCTGTTGAATTGACAGAAAAAATGCTCAGCTTTT  
 CAGCATTTCCTTCCAGATCAGCCAGATTTACAAGCAGGGCCAAACAGGAATTCATGTGCTCATCAGT  
 GATGAGATGATACAGAACTTTCAGGAAGAAGCATGTTTTATTCTGGACACAATGAAAGAAACCAATGATA  
 GCTATCATATCACTGAAG

**ACGCGT**ACGCGGCCGCTCGAGCAGAACTCATCTCAGAAGAGGATCTGGCAGCAAATGATATCCTGGATT  
 ACAAGGATGACGACGATAAGGTTTAA

**Protein Sequence:**

>RC230106 representing NM\_001173453  
 Red=Cloning site Green=Tags(s)

MAWALKLPLADEVIESGLVQDFDASLSGIGQELGAGAYSMSDVLALPIFKQEESLPPDNENKILPFQYV  
 LCAATSPAVKLHDETLTYLNQQQSYEIRMLDNRKLGELPEINGKLVKSI FRVVFHDRRLQYTEHQLEGW  
 RWNRPGRDILDIDIPMSVGIIDPRANPTQLNTVEFLWDPKRTSVFIQPKGADRKQKTDREKMEKRTPE  
 KEKYQPSYETTILTECSPWPEITYVNNSPSPGFNSHSSFSLGEANGSPNHQPEPPPPVTDNLLPTTTPQ  
 EAQQWLHRNRFSTFRFLTFNFSADLLKLRDDVIQICGPADGIRLFNALKGRMVRPRLTIYVCQESLQL  
 REQQQQQQQQKHEDGDSNGTFFVYHAIYLEELTAVELTEKIAQLFSISPCQISQIYKQGTGIHVLIS  
 DEMIQNFQEEACFILDTMKETNDSYHIILK

**TR**TRPLEQKLISEEDLAANDILDYKDDDDKV

**Chromatograms:**

[https://cdn.origene.com/chromatograms/mk8060\\_g08.zip](https://cdn.origene.com/chromatograms/mk8060_g08.zip)

**Restriction Sites:**

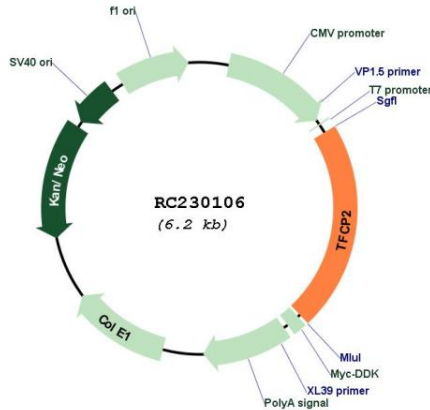
Sgfl-Mlul



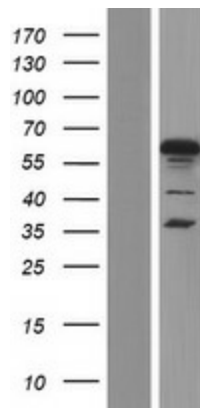
MW: 51.8 kDa

**Gene Summary:** This gene encodes a transcription factor that binds the alpha-globin promoter and activates transcription of the alpha-globin gene. The encoded protein regulates erythroid gene expression, plays a role in the transcriptional switch of globin gene promoters, and it activates many other cellular and viral gene promoters. The gene product interacts with certain inflammatory response factors, and polymorphisms of this gene may be involved in the pathogenesis of Alzheimer's disease. [provided by RefSeq, Mar 2010]

**Product images:**



Circular map for RC230106



Western blot validation of overexpression lysate (Cat# [LY433106]) using anti-DDK antibody (Cat# [TA50011-100]). Left: Cell lysates from untransfected HEK293T cells; Right: Cell lysates from HEK293T cells transfected with RC230106 using transfection reagent MegaTran 2.0 (Cat# [TT210002]).