

## Product datasheet for **RC230094**

### **PACSIN2 (NM\_001184971) Human Tagged ORF Clone**

#### **Product data:**

Product Type:	Expression Plasmids
Product Name:	PACSIN2 (NM_001184971) Human Tagged ORF Clone
Tag:	Myc-DDK
Symbol:	PACSIN2
Synonyms:	SDPII
Mammalian Cell Selection:	Neomycin
Vector:	pCMV6-Entry (PS100001)
E. coli Selection:	Kanamycin (25 ug/mL)



[View online »](#)

**ORF Nucleotide Sequence:**

>RC230094 representing NM\_001184971  
 Red=Cloning site Blue=ORF Green=Tags(s)

TTTTGTAATACGACTCACTATAGGGCGGCCGGGAATTCGTCGACTGGATCCGGTACCGAGGAGATCTGCC  
 GCC**CGCATCGCC**

ATGCTGTGCACATATGATGATTCGGTGGAGTAGAAGTGTCCAGCGACAGCTTCTGGGAGTTCGGGAAC  
 ACAAGCGGACTGTGAAGCGGATCGACGATGGCCACCGCCTGTGCAGCGACCTCATGAACTGCCTGCATGA  
 GCGGGCGCGCATCGAGAAGCGTATGCGCAGCAGCTCACTGAGTGGGCCCGCGCTGGAGGCAGCTCGTG  
 GAGAAAGGGCCCCAGTACGGGACCGTGGAGAAGCCTGGATGGCCTTCATGTCCGAGGCAGAGAGGTGA  
 GCGAGCTGCACCTCGAGGTGAAGCCTCACTGATGAACGATGACTTCGAGAAGATCAAGAAGTGGCAGAA  
 GGAAGCCTTTCACAAGCAGATGATGGGCGGCTTCAAGGAGACCAAGGAAGCTGAGGACGGCTTTCGGAAG  
 GCACAGAAGCCCTGGCCAAGAAGCTGAAAGAGGTAGAAGCAGCAAGAAAGCCACCATGCAGCGTGCA  
 AAGAGGAGAAGCTGGCTATCTCACGAGAAGCCAACAGCAAGGCAGACCCATCCCTCAACCCTGAACAGCT  
 CAAGAAATGCAAGACAAAATAGAAAAGTGAAGCAAGATGTTCTTAAGACCAAGAGAAGTATGAGAAG  
 TCCTGAAGGAACTCGACCAGGGCACACCCAGTACATGGAGAACATGGAGCAGGTGTTTGGAGCAGTGCC  
 AGCAGTTCGAGGAGAAACGCCTTCGCTTCTCCGGGAGGTTCTGCTGGAGGTTTCAGAAGCACCTAGACCT  
 GTCCAATGTGGCTGGCTACAAAGCCATTTACCATGACCTGGAGCAGAGCATCAGAGCAGCTGATGCAGTG  
 GAGGACCTGAGGTGGTCCGAGCCAATCACGGGCCGGCATGGCCATGAACTGGCCCGAGTTTGAGGAGT  
 GGTCCGCAGACCTGAATCGAACCCCTCAGCCGGAGAGAGAAGAAGAAGGCCACTGACGGCGTCACCCCTGAC  
 GGGCATCAACCAGACAGGCGACCACTCTCTGCCGAGTAAAGCCAGCAGTGTGAGCAGCTACGAGAAGACC  
 CAGAGCTATCCCACCGACTGGTCAGACGATGAGTCTAACAAACCCCTTCTCCTCCACGGATGCCAATGGGG  
 ACTCGAATCCATTGACGACGACGCCACCTCGGGGACGGAAGTGGAGTCCGGGCCCTGTATGACTATGA  
 GGGGCAGGAGCATGATGAGCTGAGCTTCAAGGCTGGGGATGAGCTGACCAAGATGGAGGACGAGGATGAG  
 CAGGGCTGGTGAAGGGACGCTTGGACAACGGCAAGTTGGCCTATACCCGGCAAATTATGTGGAGGCGA  
 TCCAG

**ACGCGT**ACGCGGCCGCTCGAGCAGAAACTCATCTCAGAAGAGGATCTGGCAGCAAATGATATCCTGGATT  
 ACAAGGATGACGACGATAAGGTTTAA

**Protein Sequence:**

>RC230094 representing NM\_001184971  
 Red=Cloning site Green=Tags(s)

MSVTYDDSVGVEVSSDSFWEVGNKRTVKRIDDGHRLCSDLMNCLHERARIEKAYAQQLEWARRWRQLV  
 EKGPQYGTVEKAWMAFMSEAERVSELHLEVKASLMNDDFEKIKNWQKEAFHKQMMGGFKETKEAEDGFRK  
 AOKPWAKKLEVEAAKKAHHAACKKEKLAISREANSKADPSLNPEQLKKLQDKIECKQDVLKTKKEYEK  
 SLKELDQGTPQYEMENMEQVFEQCQFEEKRLRFFREVLLEVQKHLDSLNVAGYKAIYHDLEQSIRAADAV  
 EDLRWFRANHGPGMAMNWPQFEWEWSADLNRTLRSREKKKATDGVTLTGINQTDQSLPSKPSVSSYEKT  
 QSYPTDWSDESNNPFSSTDANGDSNPFDDDATSGTEVRVRALYDYEGQEHDEL SFKAGDELTKMEDEDE  
 QGWCKGRLDNGQVGLYPANYVEAIQ

**TR**TRPLEQKLISEEDLAANDILDYKDDDDKV

**Chromatograms:**

[https://cdn.origene.com/chromatograms/mk8060\\_d11.zip](https://cdn.origene.com/chromatograms/mk8060_d11.zip)

**Restriction Sites:**

Sgfl-Mlul

Cloning Scheme:



ACCN: NM\_001184971

ORF Size: 1335 bp

OTI Disclaimer: The molecular sequence of this clone aligns with the gene accession number as a point of reference only. However, individual transcript sequences of the same gene can differ through naturally occurring variations (e.g. polymorphisms), each with its own valid existence. This clone is substantially in agreement with the reference, but a complete review of all prevailing variants is recommended prior to use. [More info](#)

OTI Annotation: This clone was engineered to express the complete ORF with an expression tag. Expression varies depending on the nature of the gene.

Components: The ORF clone is ion-exchange column purified and shipped in a 2D barcoded Matrix tube containing 10ug of transfection-ready, dried plasmid DNA (reconstitute with 100 ul of water).

Reconstitution Method:

1. Centrifuge at 5,000xg for 5min.
2. Carefully open the tube and add 100ul of sterile water to dissolve the DNA.
3. Close the tube and incubate for 10 minutes at room temperature.
4. Briefly vortex the tube and then do a quick spin (less than 5000xg) to concentrate the liquid at the bottom.
5. Store the suspended plasmid at -20°C. The DNA is stable for at least one year from date of shipping when stored at -20°C.

RefSeq: [NM\\_001184971.1](#), [NP\\_001171900.1](#)

RefSeq ORF: 1338 bp

Locus ID: 11252

UniProt ID: [Q9UNF0](#)

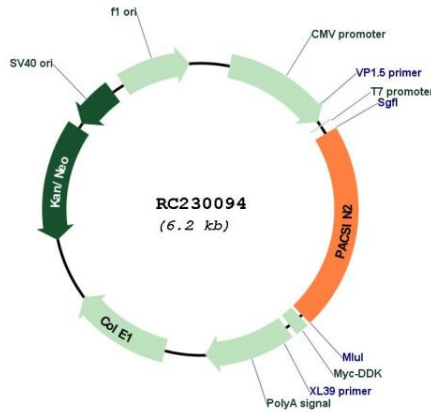
Cytogenetics: 22q13.2

MW: 51.8 kDa

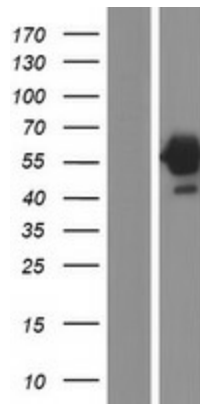
**Gene Summary:**

This gene is a member of the protein kinase C and casein kinase substrate in neurons family. The encoded protein is involved in linking the actin cytoskeleton with vesicle formation by regulating tubulin polymerization. Alternative splicing results in multiple transcript variants. [provided by RefSeq, May 2010]

**Product images:**



Circular map for RC230094



Western blot validation of overexpression lysate (Cat# [LY433094]) using anti-DDK antibody (Cat# [TA50011-100]). Left: Cell lysates from untransfected HEK293T cells; Right: Cell lysates from HEK293T cells transfected with RC230094 using transfection reagent MegaTran 2.0 (Cat# [TT210002]).