

Product datasheet for **RC230086**

SUCLG2 (NM_001177599) Human Tagged ORF Clone

Product data:

Product Type:	Expression Plasmids
Product Name:	SUCLG2 (NM_001177599) Human Tagged ORF Clone
Tag:	Myc-DDK
Symbol:	SUCLG2
Synonyms:	G-SCS; GBETA; GTPSCS
Mammalian Cell Selection:	Neomycin
Vector:	pCMV6-Entry (PS100001)
E. coli Selection:	Kanamycin (25 ug/mL)



[View online »](#)

ORF Nucleotide Sequence:

>RC230086 representing NM_001177599
 Red=Cloning site Blue=ORF Green=Tags(s)

TTTTGTAATACGACTCACTATAGGGCGGCCGGGAATTCGTCGACTGGATCCGGTACCGAGGAGATCTGCC
 GCC**CGGATCGCC**

ATGGCGTCCCCGTAGCAGCGCAGGCCGGGAAGCTTCTGCGAGCCCTAGCGCTGCGGCCCGCTTCTCTGG
 CGGCCGGTCCCAGGCAGTTCAATTAACCTCCAGAAGATGGCTGAACCTGCAGGAATACCAGAGCAAGAA
 ACTGATGTCTGACAACGGAGTGAGAGTTCAAAGATTCTTTGTAGCAGACACTGCAAATGAAGCTCTCGAG
 GCTGCTAAGAGACTAAATGCAAAAGAAATTGTTTTAAAAGCCCAGATCTTAGCTGGAGGAAGAGGAAAAG
 GTGTCTTCAATAGTGGTTTGAAGGAGGTGTTCAATTAACAAAAGACCCTAATGTTGTGGACAGCTGGC
 TAAACAGATGATTGGGTACAATCTAGCGACAAAACAACTCCAAAAGAAGGTGTGAAAGTTAACAAGGTG
 ATGGTTGCTGAAGCCTTGGATATTTCCAGAGAAACCTACCTGGCAATTCTGATGGACCGGTCTGCAATG
 GCCCGTGTGGTGGCAGCCCCAGGGGGCGTCGACATTGAAGAGGTGGCTGCTTCAAACCCGGAGCT
 CATTTTTAAGGAGCAAATTGACATTTTTGAAGGAATAAAGGACAGCCAAGCTCAGCGGATGGCCGAAAAT
 CTAGGCTTCGTTGGGCCCTTTGAAAAGCCAGGCTGCAGATCAAATTACGAAGCTGTATAATCTCTTCTGA
 AATTGATGCTACTCAGGTGGAAGTGAATCCCTTTGGTGAACCTCCAGAAGGACAAGTTGTCTGTTTTGA
 TGCCAAGATAAATTTGATGACAACGCAGAATTCGACAAAAAGACATATTTGCTATGGACGACAAATCA
 GAGAATGAGCCATTGAAAATGAAGCTGCCAAATATGATCTAAAAACATAGGACTAGATGGGAACATTG
 CCTGCTTTGTGAATGGTCTGGGCTCGCCATGGCTACTTGTGATATCATTTTCTTAATGGTGGGAAGCC
 AGCCAACTTCTTGGATCTTGGAGGTGGTGTAAAGGAAGCTCAAGTATATCAAGCATTCAAATGCTCACA
 GCTGATCCTAAGGTTGAAGCCATCCTTGTCAATATATTTGGTGGTATCGTCAACTGTGCCATCATTGCCA
 ATGGGATCACAAAGCCTGCCGGGAGCTAGAAGTCAAGGTGCCCTGGTGGTCCGGCTTGAAGGTACTTT
 TATGGAAAAAAAAGGAAGTTATATGCACATAAAAACAAGAAACAGGAAATTCAAATGAGAATAATACTGGT
 ATCCAAGAGAACGTCGCCACCAAATCTGAGTAAGTGTGCCATCAGCATTTTTTTATGT

ACGCGTACGCGGCCGCTCGAGCAGAAACTCATCTCAGAAGAGGATCTGGCAGCAATGATATCCTGGATT
 ACAAGGATGACGACGATAAGGTTTAA

Protein Sequence:

>RC230086 representing NM_001177599
 Red=Cloning site Green=Tags(s)

MASPVAAQAGKLLRALALRPRFLAAGSQAVQLTSRRWLNLQEYQSKKLMSDNGVRVQRFVADTANEALE
 AAKRLNAKEIVLKAQILAGGRGKGVFNGLKGGVHLTKDPNVVGLAKQMIGYNLATKQTPKEGVKVNKV
 MVAEALDISRETYLAILMDRSCNGPVLVGSPQGGVDIEEVAASNPELIFKEQIDIFEGIKDSQAQRMAEN
 LGFVGPLKSQAADQITKLYNLFLKIDATQVEVNPFGETPEGQVVCDAKINFDDNAEFRQKIDIFAMDDKS
 ENEPIENEAAKYDLKYIGLDGNIACFVNGAGLAMATCDIIFLNGGKPANFLDLGGGVKEAQVYQAFKLLT
 ADPKVEAILVNIFFGGIVNCAIIANGITKACRELELKVPLVVRLEGTMEKKGSYMHKQETGNSNENITG
 IQENVAHQNL SKCAISIFLC

TRTRPLEQKLISEEDLAANDILDYKDDDDKV

Chromatograms:

https://cdn.origene.com/chromatograms/mk8060_a12.zip

Restriction Sites:

Sgfl-Mlul

Cloning Scheme:


ACCN: NM_001177599

ORF Size: 1320 bp

OTI Disclaimer: The molecular sequence of this clone aligns with the gene accession number as a point of reference only. However, individual transcript sequences of the same gene can differ through naturally occurring variations (e.g. polymorphisms), each with its own valid existence. This clone is substantially in agreement with the reference, but a complete review of all prevailing variants is recommended prior to use. [More info](#)

OTI Annotation: This clone was engineered to express the complete ORF with an expression tag. Expression varies depending on the nature of the gene.

Components: The ORF clone is ion-exchange column purified and shipped in a 2D barcoded Matrix tube containing 10ug of transfection-ready, dried plasmid DNA (reconstitute with 100 ul of water).

Reconstitution Method:

1. Centrifuge at 5,000xg for 5min.
2. Carefully open the tube and add 100ul of sterile water to dissolve the DNA.
3. Close the tube and incubate for 10 minutes at room temperature.
4. Briefly vortex the tube and then do a quick spin (less than 5000xg) to concentrate the liquid at the bottom.
5. Store the suspended plasmid at -20°C. The DNA is stable for at least one year from date of shipping when stored at -20°C.

RefSeq: [NM_001177599.1](#), [NP_001171070.1](#)

RefSeq ORF: 1323 bp

Locus ID: 8801

UniProt ID: [Q96I99](#)

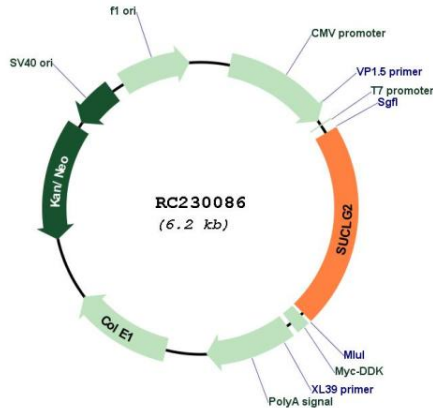
Cytogenetics: 3p14.1

Protein Pathways: Citrate cycle (TCA cycle), Metabolic pathways, Propanoate metabolism

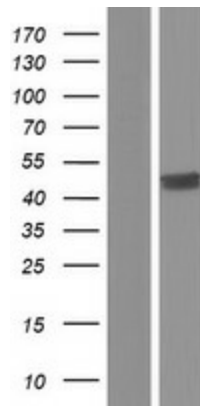
MW: 48.2 kDa

Gene Summary: This gene encodes a GTP-specific beta subunit of succinyl-CoA synthetase. Succinyl-CoA synthetase catalyzes the reversible reaction involving the formation of succinyl-CoA and succinate. Alternate splicing results in multiple transcript variants. Pseudogenes of this gene are found on chromosomes 5 and 12. [provided by RefSeq, Apr 2010]

Product images:



Circular map for RC230086



Western blot validation of overexpression lysate (Cat# [LY433086]) using anti-DDK antibody (Cat# [TA50011-100]). Left: Cell lysates from untransfected HEK293T cells; Right: Cell lysates from HEK293T cells transfected with RC230086 using transfection reagent MegaTran 2.0 (Cat# [TT210002]).