

Product datasheet for **RC230079**

Repulsive Guidance Molecule A (RGMA) (NM_001166286) Human Tagged ORF Clone

Product data:

Product Type:	Expression Plasmids
Product Name:	Repulsive Guidance Molecule A (RGMA) (NM_001166286) Human Tagged ORF Clone
Tag:	Myc-DDK
Symbol:	Repulsive Guidance Molecule A
Synonyms:	RGM
Mammalian Cell Selection:	Neomycin
Vector:	pCMV6-Entry (PS100001)
E. coli Selection:	Kanamycin (25 ug/mL)



[View online »](#)

ORF Nucleotide Sequence:

>RC230079 representing NM_001166286
 Red=Cloning site Blue=ORF Green=Tags(s)

TTTTGTAATACGACTCACTATAGGGCGGCCGGGAATTCGTCGACTGGATCCGGTACCGAGGAGATCTGCC
 GCCCGCATCGCC

ATGGGTATGGGGAGAGGGGCAGGACGTTACGCCCTGGGATTCTGGCCGACCTCGCCTTCTCTCTGCA
 GCTTCCCCGAGCCACCTCCCCGTGCAAGATCCTCAAGTGCAACTCTGAGTTCTGGAGCGCCACGTGCGG
 CAGCCACGCCAGCCTCAGACGACACCCCGAGTTCTGTGCAGCCTTGCAGCTACGCCCTGTGCACG
 CGGCGGACGGCCGACCTGCCGGGTGACCTGGCCTACCACTCGGCCGTCATGGCATAGAGGACCTCA
 TGAGCCAGCACAAGTCTCAAGGATGGCCCCACCTCGCAGCCACGCCTGCGCAGCTCCACCGGCCGG
 AGACAGCCAGGAGCGCTCGGACAGCCCCGAGATCTGCCATTACGAGAAGAGCTTTCACAAGCACTCGGC
 ACCCCCAACTACACGCACTGTGGCTCTCGGGGACCCACACCTCAGGACTTTCACCGACCGCTCCAGA
 CCTGCAAGGTGCAGGGCGCTGGCCGCTCATCGACAATAATTACCTGAACGTGCAGGTACCAACACGCC
 TGTGCTGCCCGGCTCAGCGGCCACTGCCACCAGCAAGCTCACCATCATCTCAAGAACTCCAGGAGTGT
 GTGGACAGAAGGTGTACCAGGCTGAGATGGACGAGCTCCCGGCCGCTTCGTGGATGGCTAAGAAGC
 GTGGGGACAAGCACGGGGCCAACAGCCTGAAGTCACTGAGAAGGTGTCAGGCCAGCACGTGGAGATCCA
 GGCCAAGTACATCGGCACCACCATCGTGGTGGCCAGGTGGGCCGCTACCTGACCTTTGCCGTCCGCATG
 CCAGAGGAAGTGGTCAATGCTGTGGAGGACTGGGACAGCCAGGGTCTCTACCTCTGCCTGCGGGGCTGCC
 CCCTCAACCAGCAGATCGACTCCAGGCCTTCCACACCAATGCTGAGGGCACCGGTGCCCGCAGGCTGGC
 AGCCGCCAGCCCTGCACCCACAGCCCCGAGACCTTCCATACGAGACAGCCGTGGCCAAGTGAAGGAG
 AAGCTGCCGGTGGAGGACCTGTACTACCAGGCTGCGTCTTCGACCTCCTCACCAGGGCGACGTGAAGT
 TCACACTGGCCGCTACTACGCTTGGAGGATGTCAAGATGCTCCACTCCAACAAGACAAGTGCACCT
 GTATGAGAGGACTCGGGACCTGCCAGGCAGGGCGGCTGCGGGGCTGCCCTGGCCCCCGGCCCTCCTG
 GCGCCCTGCTCCGCTCCTGGCCCTGCTCCCTGTGTTCTGC

AGCGGACCGACGCGTACGCGGCCGCTCGAGCAGAACTCATCTCAGAAGAGGATCTGGCAGCAAATGATATCC
 TGGATTACAAGGATGACGACGATAAGGTTAA

Protein Sequence:

>RC230079 representing NM_001166286
 Red=Cloning site Green=Tags(s)

MGMGRGAGRSALGFWPTLAFLLCSFPAATSPCKILKCNSEFWSATSGSHAPASDDTPEFCAALRSYALCT
 RRTARTCRGDLAYHSAVHGIEDLMSQHNSKDGPTSQPRLRTPPAGDSQERSDSPEICHYEKSFHKHSA
 TPNYTHCGLFGDPHLRFTDRFQTCVKVQAWPLIDNNYLNQVNTNPVLPGSAATATSKLTIIIFKNFQEC
 VDQKVYQAEMDELPAAFVDGSKNGGDKHGANSKITEKVSQGHVEIQAKYIGTTIVVRQVGRYLTFAVRM
 PEEVVNAVEDWDSQGLYLCLRGCP LNQQIDFQAFHTNAEGTGARRLAAASPAPTAPETFPYETAVAKCKE
 KLPVEDLYYQACVFDLLTTGDVNF TLAAYYALEDVKMLHSNKDKLHLYERTDLPGRAAAGLPLAPRPLL
 GALVPLLALLPVFC

SGPTRRRLRLEQKLISEEDLAANDILDYKDDDDKV

Chromatograms:

https://cdn.origene.com/chromatograms/mg4496_h01.zip

Restriction Sites:

Sgfl-RsrII

Cloning Scheme:


ACCN: NM_001166286

ORF Size: 1302 bp

OTI Disclaimer: The molecular sequence of this clone aligns with the gene accession number as a point of reference only. However, individual transcript sequences of the same gene can differ through naturally occurring variations (e.g. polymorphisms), each with its own valid existence. This clone is substantially in agreement with the reference, but a complete review of all prevailing variants is recommended prior to use. [More info](#)

OTI Annotation: This clone was engineered to express the complete ORF with an expression tag. Expression varies depending on the nature of the gene.

Components: The ORF clone is ion-exchange column purified and shipped in a 2D barcoded Matrix tube containing 10ug of transfection-ready, dried plasmid DNA (reconstitute with 100 ul of water).

Reconstitution Method:

1. Centrifuge at 5,000xg for 5min.
2. Carefully open the tube and add 100ul of sterile water to dissolve the DNA.
3. Close the tube and incubate for 10 minutes at room temperature.
4. Briefly vortex the tube and then do a quick spin (less than 5000xg) to concentrate the liquid at the bottom.
5. Store the suspended plasmid at -20°C. The DNA is stable for at least one year from date of shipping when stored at -20°C.

RefSeq: [NM_001166286.1](#), [NP_001159758.1](#)

RefSeq ORF: 1305 bp

Locus ID: 56963

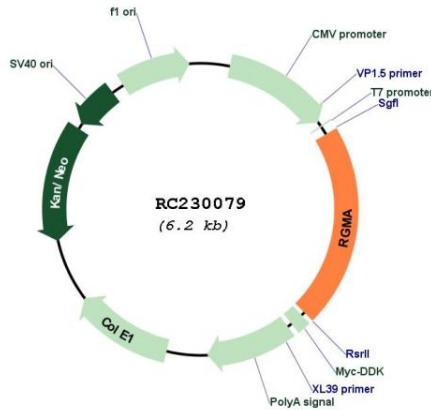
UniProt ID: [Q96B86](#)

Cytogenetics: 15q26.1

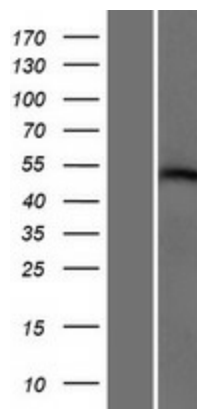
MW: 48 kDa

Gene Summary:

This gene encodes a member of the repulsive guidance molecule family. The encoded protein is a glycosylphosphatidylinositol-anchored glycoprotein that functions as an axon guidance protein in the developing and adult central nervous system. This protein may also function as a tumor suppressor in some cancers. Alternate splicing results in multiple transcript variants. [provided by RefSeq, Oct 2009]

Product images:


Circular map for RC230079



Western blot validation of overexpression lysate (Cat# [LY433079]) using anti-DDK antibody (Cat# [TA50011-100]). Left: Cell lysates from untransfected HEK293T cells; Right: Cell lysates from HEK293T cells transfected with RC230079 using transfection reagent MegaTran 2.0 (Cat# [TT210002]).