

## Product datasheet for **RC230074**

### LCOR (NM\_001170765) Human Tagged ORF Clone

#### Product data:

Product Type:	Expression Plasmids
Product Name:	LCOR (NM_001170765) Human Tagged ORF Clone
Tag:	Myc-DDK
Symbol:	LCOR
Synonyms:	C10orf12; MLR2
Mammalian Cell Selection:	Neomycin
Vector:	pCMV6-Entry (PS100001)
E. coli Selection:	Kanamycin (25 ug/mL)



[View online »](#)

**ORF Nucleotide Sequence:**

>RC230074 representing NM\_001170765  
 Red=Cloning site Blue=ORF Green=Tags(s)

TTTTGTAATACGACTCACTATAGGGCGGCCGGAATTCGTGACTGGATCCGGTACCGAGGAGATCTGCC  
 GCC**CGGATCGCC**

ATGCAGCGAATGATCCAACAATTTGCTGCTGAATATACCTCAAAAAATAGCTCTACTCAGGACCCAGCC  
 AGCCCAATAGCACAAAGAACCAAGCCTGCCGAAAGCATCTCCAGTCACCACCTCTCCCACGGCTGCAAC  
 TACTCAGAACCCCTGTGCTCAGCAAACCTTCTCATGGCTGACCAAGACTCACCTCTGGACCTTACTGTCAGA  
 AAGTCTCAGTCAGAACCTAGCGAACAAGACGGTGTACTTGATCTGTCCACTAAGAAAAGTCCATGTGCTG  
 GCAGCACTTCCCTGAGCCACTCTCCAGGCTGCTCCAGTACTCAAGGGAACGGGGACCTGGGAGACCCAG  
 CCAGTACCGCCCAGACGGACTTCGGAGTGGTATGGGGTACCTCCAAGAAGCTTACAGGATGGAACCAGG  
 GAAGGTTTTGGACTCCACATCACTCAAAGTCCACTGGCTCGATCCCTGCAGATTAGTGAAGAACTAC  
 TGAGCAGAAAACCAATTGTCCACAGCTGCCAGCCTTGGGCCATCTGGATTACAGAATCATGGACAACACTT  
 AATATTATCCAGGAAGCCTCTTGGGCAAAACCACATTACGAGTCAACCTCAGCCGTATGAAGTTCAGG  
 GGAATGGTGCCTCAGCAACATCAGTGACCTTCTTTTCTTGCAGAAAACCTCTGCCTTTCCAAAAATGG  
 CACTTCAAGCAAAAACAAGATGGAAGAAAAGGATGTGAGCCATTCATCTCCTGTAGATTTAAAGATACCACA  
 AGTTCGAGGAATGGATCTTTCTTGGGAGTCTCGCACTGGTATCAGTACAGCTATAGCTCTTTGGTAATG  
 GGTTACAAAACGGAGAGCGCGCTTAGTAAAAAATTAAGGGCTATTCTTCCAAAACAAAGTAGAAAAAGCA  
 TGTTAGATGCTGGACCCGATTCTTGGGGCTCAGATGCTGAGCAGTCTACCTCTGGACAGCCATATCCAC  
 ATCGGATCAAGAAGGAGACCCCTGGCTCCAAGCAGCCTCGGAAGAAAAGAGGGCGTTACAGACAGTACAAC  
 AGTGAGTACTGGAGGAAGCAATCTCAGTGGTTATGAGTGGAAAAATGAGTGTTTCCAAAGCTCAGAGTA  
 TTTATGGGATCCCCACAGTACACTGGAGTACAAAGTAAAGGAGAGGCTGGGCACCTTTGAAAAACCTCC  
 AAAGAAAAAGATGAAATTAATGAGGTGGAGGGCCAGATGTTTTCTGTAAGATTGAATTAGATCCCCAG  
 GGAGAGGCAGCACAAAGTCAAATGAATCAAAAAACGAG

**ACGCGT**ACGCGGCCGCTCGAGCAGAAACTCATCTCAGAAGAGGATCTGGCAGCAATGATATCCTGGATT  
 ACAAGGATGACGACGATAAGGTTTAA

**Protein Sequence:**

>RC230074 representing NM\_001170765  
 Red=Cloning site Green=Tags(s)

MQRMIQQFAAEYTSKNSSTQDPSQPNSTKNQSLPKASPVTTSPATAATTQNPVLSKLLMADQDSPLDLTVR  
 KSQSEPEQDGVLDLSTKKSPCAGSTLSHSPGCSSTQGNRPGRPSQYRPDGLRSGDGVPPRSLQDGR  
 EFGHSTSLKVPLARSLQISELLSRNQLSTAASLGPGLQNHGQHLILSREASWAKPHYEFNLSRMKFR  
 GNGALSNI SDLPFLAENSAFPKMALQAKQDGGKDVSHSSPVDLKIPQVRGMDLSWESRTGDQYSYSSLVM  
 GSQTESALS KKLRAILPKQSRKMLDAGPDSWGSDAEQSTSGQPYPTSDQEGDPGSKQPRKKRGRYRQYN  
 SEILEEAI SVVMMSGKMSVSKAQSIYIPHSTLEYKVKERLGT LKNPPKKMKLMRSEGPDVSVKIELDPQ  
 GEAAQSANESKNE

**TR**TRPLEQKLISEEDLAANDILDYKDDDDKV

**Chromatograms:**

[https://cdn.origene.com/chromatograms/mk8059\\_e09.zip](https://cdn.origene.com/chromatograms/mk8059_e09.zip)

**Restriction Sites:**

SgfI-MluI

**Cloning Scheme:**


**ACCN:** NM\_001170765

**ORF Size:** 1299 bp

**OTI Disclaimer:** The molecular sequence of this clone aligns with the gene accession number as a point of reference only. However, individual transcript sequences of the same gene can differ through naturally occurring variations (e.g. polymorphisms), each with its own valid existence. This clone is substantially in agreement with the reference, but a complete review of all prevailing variants is recommended prior to use. [More info](#)

**OTI Annotation:** This clone was engineered to express the complete ORF with an expression tag. Expression varies depending on the nature of the gene.

**Components:** The ORF clone is ion-exchange column purified and shipped in a 2D barcoded Matrix tube containing 10ug of transfection-ready, dried plasmid DNA (reconstitute with 100 ul of water).

**Reconstitution Method:**

1. Centrifuge at 5,000xg for 5min.
2. Carefully open the tube and add 100ul of sterile water to dissolve the DNA.
3. Close the tube and incubate for 10 minutes at room temperature.
4. Briefly vortex the tube and then do a quick spin (less than 5000xg) to concentrate the liquid at the bottom.
5. Store the suspended plasmid at -20°C. The DNA is stable for at least one year from date of shipping when stored at -20°C.

**RefSeq:** [NM\\_001170765.2](#)

**RefSeq ORF:** 1302 bp

**Locus ID:** 84458

**UniProt ID:** [Q96JN0](#)

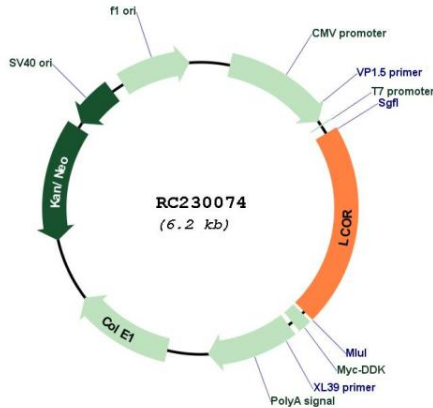
**Cytogenetics:** 10q24.1

**Protein Families:** Druggable Genome

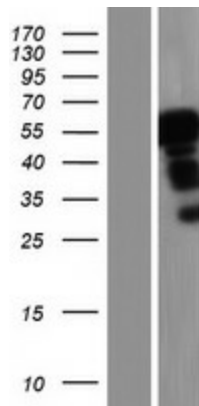
**MW:** 47.5 kDa

**Gene Summary:** LCOR is a transcriptional corepressor widely expressed in fetal and adult tissues that is recruited to agonist-bound nuclear receptors through a single LxxLL motif, also referred to as a nuclear receptor (NR) box (Fernandes et al., 2003 [PubMed 12535528]).[supplied by OMIM, Mar 2008]

**Product images:**



Circular map for RC230074



Western blot validation of overexpression lysate (Cat# [LY433074]) using anti-DDK antibody (Cat# [TA50011-100]). Left: Cell lysates from untransfected HEK293T cells; Right: Cell lysates from HEK293T cells transfected with RC230074 using transfection reagent MegaTran 2.0 (Cat# [TT210002]).