

Product datasheet for **RC230066**

PDHA1 (NM_001173454) Human Tagged ORF Clone

Product data:

Product Type:	Expression Plasmids
Product Name:	PDHA1 (NM_001173454) Human Tagged ORF Clone
Tag:	Myc-DDK
Symbol:	PDHA1
Synonyms:	PDHA; PDHAD; PDHCE1A; PHE1A
Mammalian Cell Selection:	Neomycin
Vector:	pCMV6-Entry (PS100001)
E. coli Selection:	Kanamycin (25 ug/mL)



[View online »](#)

ORF Nucleotide Sequence:

>RC230066 representing NM_001173454
 Red=Cloning site Blue=ORF Green=Tags(s)

TTTTGTAATACGACTCACTATAGGGCGGCCGGAATTCGTCGACTGGATCCGGTACCGAGGAGATCTGCC
 GCC**GCGATCGCC**

ATGAGGAAGATGCTCGCCGCGTCTCCCGCGTGTCTGGCGCTTCTCAGAAGCCGAGACATGGTCTTG
 CTACGTTGCCAGTCTGGTCTCCATCTCCAGGCTCAAGCAGTCCCTCCACCTCGGCCTCCCAAAGTGCTG
 GGATTACTCTCACTCTCTTAAAACCAGGCAGGCAAGCAGAGTGCTGGTAGCATCCCGTAATTTTGCAAT
 GATGCTACATTTGAAATTAAGAAATGTGACCTTACCAGGCTGGAAGAAGGCCCTCTGTCAACAGTGC
 TCACCAGGAGGATGGGCTCAAATACTACAGGATGATGCAGACTGTACGCCGAATGGAGTTGAAAGCAGA
 TCAGCTGTATAAACAGAAAATTATTCGTGGTTTCTGCACTTGTGTGATGGTCAGGAAGCTTGTGTGTG
 GGCCTGGAGGCCGCATCAACCCACAGACCATCTCATCACAGCCTACCGGGCTCACGGCTTACTTTCA
 CCCGGGCGCTTCCGTCCGAGAAATTCGCGAGAGCTTACAGGACGAAAAGGAGTTGTGCTAAAGGGAA
 AGGAGGATCGATGCACATGTATGCCAAGAACTTCTACGGGGCAATGGCATCGTGGGAGCGCAGGTGCC
 CTGGGCGCTGGGATTGCTTAGCCTGTAAGTATAATGGAAAAGATGAGGTCTGCCTGACTTTATATGGCG
 ATGGTGTGCTAACCCAGGGCCAGATATTCGAAGCTTACAACATGGCAGCTTTGTGGAAATACCTTGTAT
 TTTTCATCTGTGAGAAATAATCGTATGGAATGGGAACGCTCTGTTGAGAGAGCGGCAGCCAGCACTGATTAC
 TACAAGAGAGGCGATTTTCATTCTGGGCTGAGAGTGGATGGAATGGATATCCTGTGCGTCCGAGAGGCAA
 CAAGGTTTGTGCTGCCTATTGTAGATCTGGGAAGGGGCCATCTGTAGGAGCTGCAGACTTACCGTTA
 CCACGGACACAGTATGAGTGACCCTGGAGTCAGTTACCGTACACGAGAAGAAATTCAGGAAGTAAAGAGT
 AAGAGTGACCCTATTATGCTTCTCAAGGACAGGATGGTGAACAGCAATCTTGCCAGTGTGGAAGAATAA
 AGGAAATTGATGTGGAAGTGAGGAAGGAGATTGAGGATGCTGCCAGTTTGCCACGGCCGATCCTGAGCC
 ACCTTTGGAAGAGCTGGGCTACCACATCTACTCCAGCAGCCACCTTTTGAAGTTCGTGGTCCCAATCAG
 TGATCAAGTTTAAAGTCAGTCAGT

ACGCGTACGCGGCCGCTCGAGCAGAACTCATCTCAGAAGAGGATCTGGCAGCAAATGATATCCTGGATT
 ACAAGGATGACGACGATAAGGTTTAA

Protein Sequence:

>RC230066 representing NM_001173454
 Red=Cloning site Green=Tags(s)

MRKMLAAYSRVLSGASQKPRHGLATLPSLVSISRLKQSSHLGLPKCWDYSHSLKTRQASRVLVASRNFAN
 DATFEIKKCDLHRLLEEGPPVTTVLTREDGLKYYRMMQTVRRMELKADQLYKQKIIRGFCHLCDGQEACCV
 GLEAGINPTDHLITAYRAHGFTFTRGLSVREILAEITGRKGGCAKGGGSMHMYAKNFYGGNGIVGAQVP
 LGAGIALACKYNGKDEVCLTYGDGAANQGQIFEAYNMAALWKLPCIFICENNRYGMGTSVERAAASTDY
 YKRGDFIPGLRVDGMDILCVREATRFAAAYCRSGKGPILMELQTYRYHGHMSDPGVSYRTRREEIQEVRS
 KSDPIMLLKDRMVNSNLASVEELKEIDVEYRKEIEDAAQFATADPEPPLEELGYHIYSSDPPFVVRGANQ
 WIKFKSVS

TRTRPLEQKLISEEDLAANDILDYKDDDDKV

Chromatograms:

https://cdn.origene.com/chromatograms/mk8059_b10.zip

Restriction Sites:

SgfI-MluI

Cloning Scheme:


ACCN: NM_001173454

ORF Size: 1284 bp

OTI Disclaimer: The molecular sequence of this clone aligns with the gene accession number as a point of reference only. However, individual transcript sequences of the same gene can differ through naturally occurring variations (e.g. polymorphisms), each with its own valid existence. This clone is substantially in agreement with the reference, but a complete review of all prevailing variants is recommended prior to use. [More info](#)

OTI Annotation: This clone was engineered to express the complete ORF with an expression tag. Expression varies depending on the nature of the gene.

Components: The ORF clone is ion-exchange column purified and shipped in a 2D barcoded Matrix tube containing 10ug of transfection-ready, dried plasmid DNA (reconstitute with 100 ul of water).

Reconstitution Method:

1. Centrifuge at 5,000xg for 5min.
2. Carefully open the tube and add 100ul of sterile water to dissolve the DNA.
3. Close the tube and incubate for 10 minutes at room temperature.
4. Briefly vortex the tube and then do a quick spin (less than 5000xg) to concentrate the liquid at the bottom.
5. Store the suspended plasmid at -20°C. The DNA is stable for at least one year from date of shipping when stored at -20°C.

RefSeq: [NM_001173454.2](#)

RefSeq ORF: 1287 bp

Locus ID: 5160

UniProt ID: [P08559](#)

Cytogenetics: Xp22.12

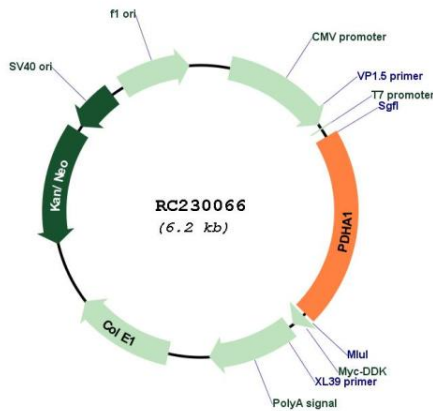
Protein Families: Druggable Genome

Protein Pathways: Butanoate metabolism, Citrate cycle (TCA cycle), Glycolysis / Gluconeogenesis, Metabolic pathways, Pyruvate metabolism, Valine, leucine and isoleucine biosynthesis

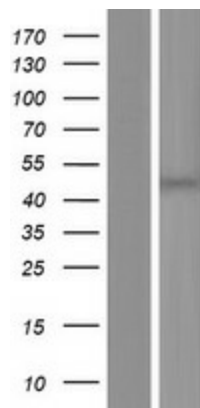
MW: 48 kDa

Gene Summary: The pyruvate dehydrogenase (PDH) complex is a nuclear-encoded mitochondrial multienzyme complex that catalyzes the overall conversion of pyruvate to acetyl-CoA and CO₂, and provides the primary link between glycolysis and the tricarboxylic acid (TCA) cycle. The PDH complex is composed of multiple copies of three enzymatic components: pyruvate dehydrogenase (E1), dihydrolipoamide acetyltransferase (E2) and lipoamide dehydrogenase (E3). The E1 enzyme is a heterotetramer of two alpha and two beta subunits. This gene encodes the E1 alpha 1 subunit containing the E1 active site, and plays a key role in the function of the PDH complex. Mutations in this gene are associated with pyruvate dehydrogenase E1-alpha deficiency and X-linked Leigh syndrome. Alternatively spliced transcript variants encoding different isoforms have been found for this gene.[provided by RefSeq, Mar 2010]

Product images:



Circular map for RC230066



Western blot validation of overexpression lysate (Cat# [LY433066]) using anti-DDK antibody (Cat# [TA50011-100]). Left: Cell lysates from untransfected HEK293T cells; Right: Cell lysates from HEK293T cells transfected with RC230066 using transfection reagent MegaTran 2.0 (Cat# [TT210002]).