

Product datasheet for RC230050

LANCL3 (NM_001170331) Human Tagged ORF Clone

Product data:

Product Type:	Expression Plasmids
Tag:	Myc-DDK
Symbol:	LANCL3
Mammalian Cell	Neomycin
Selection:	
Vector:	pCMV6-Entry (PS100001)
E. coli Selection:	Kanamycin (25 ug/mL)

ORF Nucleotide Sequence: >RC230050 representing NM_001170331
Red=Cloning site Blue=ORF Green=Tags(s)

TTTTGTAATACGACTCACTATAGGGCGGCCGGGAATTCGTCGACTGGATCCGGTACCGAGGAGATCTGCC
GCCGCGATCGCC

ATGGACACCAAGCGCTGCTTCGCCAATCGCTTCGATGACTACCAGGGCAGCCTGCTGGCGGGCCAGTGTG
AGGAGGCGGTGGCGCCCTTGGTCACCGCCACCATCGAGCGCATCCTCCAGGAGCTTCCCCACTCGGGG
CGGCGCGGAGGCCCGAGGGGCGACGGCGGGGGCTAGCGCCTGCCAGGGGGGCTTTATGGCGCGTGGCC
GGAGTGGCGTATATGCTCTACCACGCTCTCGCAGAGCCCGCTTTTCGCCACGGCCGGGAACGCTACCTGC
GCTCGGCTAAGCGCCTCATCGACCGGTGCGCCCGCGCTGAGGAGTGGGGCGAACCGGACGCCGACACCCG
CGCCGCCTTCTGCTCGGGGCGGGGCGTGTACGCCGTGGCCACGCTCGTATACCACGCCCTGGGCCGG
TCCGACTACGTGCAGCCGCTGGCAAGTTCGGGCTCTGTGTCCGCTCTGCGCGCCGGTCTCCTTCTGG
AGTGGCGCTCCGACGAGCTGTTCTGTTGGCCGCGCGGGTTACCTGTGTGCCGCGTGGTGTCAAGCAGAA
ACTCGCCAGGAGGTGCTGACTCCAGCACAGATCAAGTCAATTTGTCAGGCAATTCTGGACTCTGGGAAG
CAGTATGCCATAAAGAAGAGGAAACCATTCCCCTGATGTATTCTTACTATGGAACCGAATACTTGGGG
CAGCTCAGGCTTGTCTGCTATTCTTCAGATGCTTCTTCTTACCATGAGCATCTCAAGCCCTCAGATCG
GGAAATTGGTATGGCAGAGCGTGGACTTTCTCATGGAACAGGAACAAAACGCAACTGGCCACCTGAGCTC
GGCGAGACCATCGAGAGAGAGAATGAGCTGGTGCCTGGTCCATGGCGCTCCAGGAATTGCCTATCTGT
TTGCCAAAGCTTATCTGGTTTCCAAGAAACCGCAGTACCTGGACACATGATTCGGTGTGGGAACTCAC
ATGGCAGAAAGCCCTGCTAAAGAAGGGGCGTGGGATTTGCCATGGAGTAGCCGGCAGTGCCTATGTCTTC
CTGCTGCTGTACCGGCTCACGGGAACTCTAAATACATCTACCGAGCTCAAAGGTTTGTCAATCTTAT
TTACCGAGGAATCAAGGCCGTTCTCGGGTCTTGAAAGTATACAGCTTGTATGAAGGCTTCTCTGG
GACAGTGTCTTCTGATTGACCTGCTGCAGCCAATCAGGCTGAATCCCACTCTTCAGCGTCTTGT

ACGCGGCCGCTCGAGCAGAACTCATCTCAGAAGAGGATCTGGCAGCAAATGATATCCTGGA
TTACAAGGATGACGACGATAAGGTTTAA



Protein Sequence: >RC230050 representing NM_001170331
 Red=Cloning site Green=Tags(s)

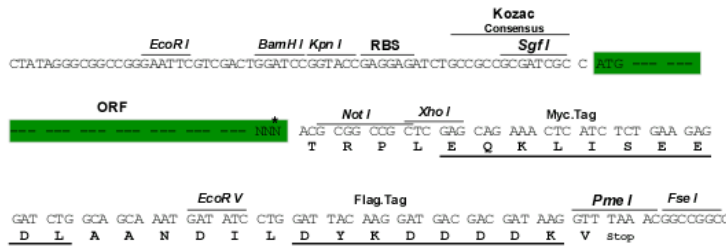
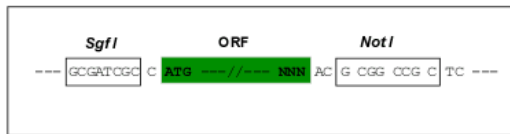
MDTKRCFANRFDDYQGSLLAGQCEEAVAPLVTATIERILQELPPLGGAEARGATAGASACQGGLYGGVA
 GVAYMLYHVSQSPLFATARERYLRSKRILIDACARAEWGEPPADTRAFFLLGGAGVYAVATLVYHALGR
 SDYVQPLGKFRALCAVCAVSVFLECGSDEL FVGRAGYLCAALVLKQKLAQEVLPQAQIKSICQAILDSGK
 QYAIKKRKPFFLMYSYGYTEYLGAHGLSSILQMLLSYHEHLKPSDREL VWQSVDFLMEQEQNCNWPEL
 GETIERENELVHWCHGAPGIAYLFAKAYLVSKKPQYLDTCIRC GELTWQKLLKKGPGICHGVAGSAYVF
 LLLYRLTGNSKYIYRAQRFQFLFTEEFKAGSRVLESYSLYEGFSGTVCFLLDLLQPNQAEFFLFSVVF

TRRLEQKLISEEDLAANDILDYKDDDDKV

Restriction Sites: SgfI-NotI

Cloning Scheme:

Cloning sites used for ORF Shuttling:



* The last codon before the Stop codon of the ORF

ACCN: NM_001170331

ORF Size: 1260 bp

OTI Disclaimer: The molecular sequence of this clone aligns with the gene accession number as a point of reference only. However, individual transcript sequences of the same gene can differ through naturally occurring variations (e.g. polymorphisms), each with its own valid existence. This clone is substantially in agreement with the reference, but a complete review of all prevailing variants is recommended prior to use. [More info](#)

OTI Annotation: This clone was engineered to express the complete ORF with an expression tag. Expression varies depending on the nature of the gene.

Components: The ORF clone is ion-exchange column purified and shipped in a 2D barcoded Matrix tube containing 10ug of transfection-ready, dried plasmid DNA (reconstitute with 100 ul of water).

Reconstitution Method:

1. Centrifuge at 5,000xg for 5min.
2. Carefully open the tube and add 100ul of sterile water to dissolve the DNA.
3. Close the tube and incubate for 10 minutes at room temperature.
4. Briefly vortex the tube and then do a quick spin (less than 5000xg) to concentrate the liquid at the bottom.
5. Store the suspended plasmid at -20°C. The DNA is stable for at least one year from date of shipping when stored at -20°C.

Note: Plasmids are not sterile. For experiments where strict sterility is required, filtration with 0.22um filter is required.

RefSeq: [NM_001170331.2](#)

RefSeq ORF: 1263 bp

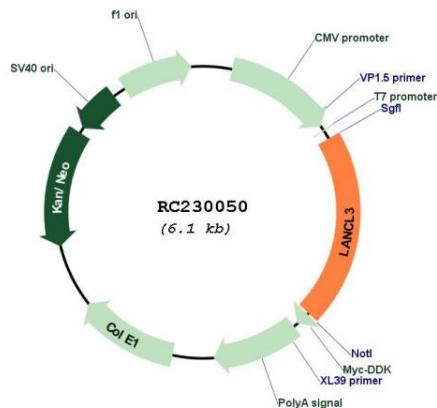
Locus ID: 347404

UniProt ID: [Q6ZV70](#)

Cytogenetics: Xp21.1

MW: 46.8 kDa

Product images:



Circular map for RC230050