

Product datasheet for **RC230043**

Pregnancy Specific Glycoprotein 1 (PSG1) (NM_001184826) Human Tagged ORF Clone

Product data:

Product Type:	Expression Plasmids
Product Name:	Pregnancy Specific Glycoprotein 1 (PSG1) (NM_001184826) Human Tagged ORF Clone
Tag:	Myc-DDK
Symbol:	Pregnancy Specific Glycoprotein 1
Synonyms:	B1G1; CD66f; DHFRP2; FL-NCA-1/2; PBG1; PS-beta-C/D; PS-beta-G-1; PSBG-1; PSBG1; PSG95; PSGGA; PSGIIA; SP1
Mammalian Cell Selection:	Neomycin
Vector:	pCMV6-Entry (PS100001)
E. coli Selection:	Kanamycin (25 ug/mL)



[View online »](#)

ORF Nucleotide Sequence:

>RC230043 representing NM_001184826
 Red=Cloning site Blue=ORF Green=Tags(s)

TTTTGTAATACGACTCACTATAGGGCGGCCGGAATTCGTCGACTGGATCCGGTACCGAGGAGATCTGCC
 GCC**CGCATCGCC**

ATGGGAACCTCTCAGCCCTCCCTGCACACAGCGCATCAAATGGAAGGGGCTCCTGCTCACAGCATCAC
 TTTTAACTTCTGGAACCTGCCACCAGTCCCAAGTCACGATTGAAGCCGAGCCAACCAAAGTTCCGA
 GGGGAAGGATGTTCTTCTACTTGTCCACAATTTGCCCCAGAATCTTACCGGTACATCTGGTACAAAGGG
 CAAATGAGGGACCTCTACCATTACATTACATCATATGTAGTAGACGGTAAATAATTATATATGGCCTG
 CATATAGTGGACGAGAAACAGCATATTTCAATGCATCCCTGCTGATCCAGAATGTCACCCGGGAGGACGC
 AGGATCTACACCTTACACATCATAAAGGGAGATGATGGGACTAGAGGAGTAACTGGACGTTTCACCTTC
 ACCTTACACCTGGAGACTCCTAAGCCCTCCATCTCCAGCAGCAACTTAAATCCCAGGGAGACCATGGAGG
 CTGTGAGCTTAACCTGTGACCCTGAGACTCCAGACGCAAGCTACCTGTGGTGGATGAATGGTCAGAGCCT
 CCCTATGACTCACAGCTTGAAGCTGTCCGAAACCAACAGGACCCTCTTTCTATTGGGTGTCACAAAGTAT
 ACTGCAGGACCCTATGAATGTGAAATACGGAACCCAGTGAAGTCCAGCCGAGTACCCAGTACCCCTGA
 ATCTCCTCCCGAAGCTGCCCAAGCCCTACATCACCATCAACAACCTAAACCCAGGGAGAATAAGGATGT
 CTTAAACTTACCTGTGAACCTAAGAGTGAGAACTACACCTACATTTGGTGGCTAAATGGTCAGAGCCTC
 CCGGTCAGTCCCAGGGTAAAGCGACCCATTGAAAACAGGATCCTCATTCTACCCAGTGTACAGAGAAATG
 AAACAGGACCCTATCAATGTGAAATACGGGACCGATATGGTGGCATCCGAGTACCCAGTACCCCTGAA
 TGTCTCTATGGTCCAGACCTCCCAGAATTTACCCTTATTACCTATTACCGTTCAGGAGAAGTCCCTC
 TACTTGTCTGTCTGCGGACTTAACCCAGGACAGTATTCTTGGACAATTAATGAAAAGTTTCAGC
 TACCAGGACAAAAGCTCTTTATCCGCCATATTACTACAAAGCATAGCGGGCTCTATGTTTGTCTGTTCG
 TAACTCAGCCACTGGCAAGGAAAGCTCCAATCCATGACAGTCGAAGTCTCTGAAGCCCTA

ACGCGTACGCGGCCGCTCGAGCAGAACTCATCTCAGAAGAGGATCTGGCAGCAAATGATATCCTGGATT
 ACAAGGATGACGACGATAAGGTTTAA

Protein Sequence:

>RC230043 representing NM_001184826
 Red=Cloning site Green=Tags(s)

MGTLSAPPCTQRIKWKGLLLTASLLNFWNLPTTAQVTIEAETPKVSEKDVLLL VHNLPQNL TGYIWKYK
 QMRDLYHYITSYVVDGEIIIYGPAYSGRETAYSNASLLIQNVTREDAGSYTLHIKGGDGTGRVTRFTF
 TLHLETPKPSISSNLPRETMEAVSLTCDPETPDASYLWWMNGQSLPMTHSLKLS ETRNRTLFLLGVTKY
 TAGPYECEIRNPVSASRSDPVTLNLLPKLPKYITINLNPRENKDVLFNFTCEPKSENYTYIWWLNGQSL
 PVS PRVKRPIENRILILPSVTRNETGPYQCEIRDYGGIRSDPVTLNVL YGPDLPRIYPSFTYYRSGEVL
 YLSCSADSNPPAQYSWTINEKFQLPGQKLFIRHITTKHSGLYVCSVRNSATGKESKSM TVEVSEAL

TRTRPLEQKLISEEDLAANDILDYKDDDDKV

Chromatograms:

https://cdn.origene.com/chromatograms/mk8058_d03.zip

Restriction Sites:

Sgfl-Mlul

Cloning Scheme:


ACCN: NM_001184826

ORF Size: 1251 bp

OTI Disclaimer: The molecular sequence of this clone aligns with the gene accession number as a point of reference only. However, individual transcript sequences of the same gene can differ through naturally occurring variations (e.g. polymorphisms), each with its own valid existence. This clone is substantially in agreement with the reference, but a complete review of all prevailing variants is recommended prior to use. [More info](#)

OTI Annotation: This clone was engineered to express the complete ORF with an expression tag. Expression varies depending on the nature of the gene.

Components: The ORF clone is ion-exchange column purified and shipped in a 2D barcoded Matrix tube containing 10ug of transfection-ready, dried plasmid DNA (reconstitute with 100 ul of water).

Reconstitution Method:

1. Centrifuge at 5,000xg for 5min.
2. Carefully open the tube and add 100ul of sterile water to dissolve the DNA.
3. Close the tube and incubate for 10 minutes at room temperature.
4. Briefly vortex the tube and then do a quick spin (less than 5000xg) to concentrate the liquid at the bottom.
5. Store the suspended plasmid at -20°C. The DNA is stable for at least one year from date of shipping when stored at -20°C.

RefSeq: [NM_001184826.2](#)

RefSeq ORF: 1254 bp

Locus ID: 5669

UniProt ID: [P11464](#)

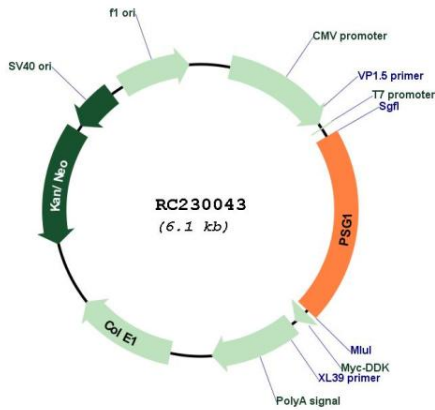
Cytogenetics: 19q13.2

Protein Families: Secreted Protein

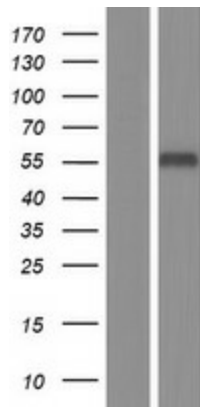
MW: 47.4 kDa

Gene Summary: The human placenta is a multihormonal endocrine organ that produces hormones, enzymes, and other molecules that support fetal survival and development. Pregnancy-specific beta-1-glycoprotein (PSBG, PSG) is a major product of the syncytiotrophoblast, reaching concentrations of 100 to 290 mg/l at term in the serum of pregnant women (Horne et al., 1976 [PubMed 971765]). PSG is a member of the immunoglobulin (Ig) superfamily (Watanabe and Chou, 1988 [PubMed 3257488]; Streydio et al., 1988 [PubMed 3260773]).[supplied by OMIM, Oct 2009]

Product images:



Circular map for RC230043



Western blot validation of overexpression lysate (Cat# [LY433043]) using anti-DDK antibody (Cat# [TA50011-100]). Left: Cell lysates from untransfected HEK293T cells; Right: Cell lysates from HEK293T cells transfected with RC230043 using transfection reagent MegaTran 2.0 (Cat# [TT210002]).