

## Product datasheet for **RC230041**

### CREBRF (NM\_001168393) Human Tagged ORF Clone

#### Product data:

Product Type:	Expression Plasmids
Product Name:	CREBRF (NM_001168393) Human Tagged ORF Clone
Tag:	Myc-DDK
Symbol:	CREBRF
Synonyms:	C5orf41; LRF
Mammalian Cell Selection:	Neomycin
Vector:	pCMV6-Entry (PS100001)
E. coli Selection:	Kanamycin (25 ug/mL)
ORF Nucleotide Sequence:	>RC230041 representing NM_001168393 Red=Cloning site Blue=ORF Green=Tags(s)

TTTTGTAATACGACTCACTATAGGGCGCCGGGAATTCGTCGACTGGATCCGGTACCGAGGAGATCTGCC  
GCC**CGATCGCC**

ATGCCTCAGCCTAGTGTAAGCGGAATGGATCCGCCTTTCGGGGATGCCTTTCGAAGCCACACCTTTTCGG  
AACAACTCTGATGAGCACAGATCTCTTAGCAAACAGTTCGGATCCAGATTTTCATGTATGAACTGGATAG  
AGAGATGAACTACCAACAGAATCCTAGAGACAACCTTCTTCTTGGAGGACTGCAAAGACATTGAAAAT  
CTGGAGTCTTTCACAGATGCTCTGGATAATGAGGGTGCTTAACTCAAAGTGGGAAACAGTGGGATACAT  
ACTGTGAAGACCTAACGAAATATACCAAATAACCAGCTGTGACATCTGGGGAACAAAAGAAGTGGATTA  
CTTGGGTCTTGATGACTTTCTAGTCCTTACCAAGATGAAGAGGTTATAAGTAAAACCTCAACTTTAGCT  
CAACTTAATAGTGAGGACTCACAGTCTGTTTCTGATTCCCTTTATTACCCGATTCACTTTTCAGTGTC  
AACAAAATCCCTTACCCTCTTCACTCCCTGGTAAAAAGATCACAAGCAGAGCAGCTGCTCCTGTGTGTTT  
TTCTAAGACTCTGCAGGCTGAGGTCCCTTTGTCAGACTGTGTCCAAAAAGCAAGTAAACCCACTTCAAGC  
ACACAAATCATGGTGAAGACCAACATGTATCATAATGAAAAGGTGAACCTTTCATGTTGAATGTAAGACT  
ATGTAAGAAAGGCAAAGGTAAAGATCAACCCAGTGCACACAGAGCCGGCCCTTGTGAGCCAGATTCACAC  
AGATGCAGCAAAGGAGAACACCTGCTACTGTGGTGCAGTGGCAAAGAGACAAGAGAAAAAGGGATGGAG  
CCTCTTCAAGTTCATGCCACTCCCGCTTTGCCTTTTAAAGAAACCCAGGAATTAATAAGTCCCCTGC  
CCCAGGAAGTCTGGTCACTTGCAGCAGGAGAGAGCAGCAGTCTTTCTGCCAGTACATCAGTCTCAGA  
TTCATCCAGAAAAAGAGAGCACAATTATTCTTTTTGTCTCCGACAACCTGGGTGAACAGCCAACCT  
AAATGCAGTCTGAAGAAGATGAGGAGGACGAGGAGGATGTTGATGATGAGGACCATGATGAAGGATTTCG  
GCAGTGAGCATGAACTGTCTGAAAATGAGGAGGAGGAAGAAGAGGAGGATTATGAAGATGACAAGGA  
TGATGATATTAGTGATACTTTCTCTGAACCAGGTATTATAATGCTTGCAAGCTTACCAGAC

**ACGCGT**ACGCGGCCGCTCGAGCAGAACTCATCTCAGAAGAGGATCTGGCAGCAAATGATATCCTGGATT  
ACAAGGATGACGACGATAAGGTTTAA





**Reconstitution Method:**

1. Centrifuge at 5,000xg for 5min.
2. Carefully open the tube and add 100ul of sterile water to dissolve the DNA.
3. Close the tube and incubate for 10 minutes at room temperature.
4. Briefly vortex the tube and then do a quick spin (less than 5000xg) to concentrate the liquid at the bottom.
5. Store the suspended plasmid at -20°C. The DNA is stable for at least one year from date of shipping when stored at -20°C.

**RefSeq:** [NM\\_001168393.2](#)

**RefSeq ORF:** 1254 bp

**Locus ID:** 153222

**UniProt ID:** [Q8IUR6](#)

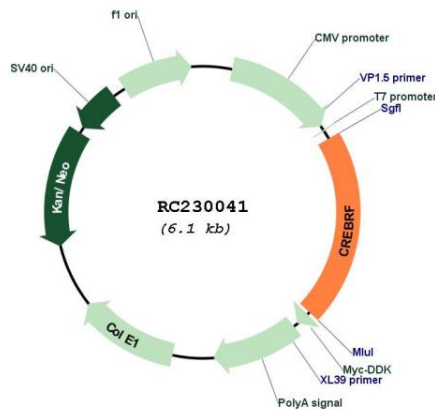
**Cytogenetics:** 5q35.1

**Protein Families:** Transcription Factors

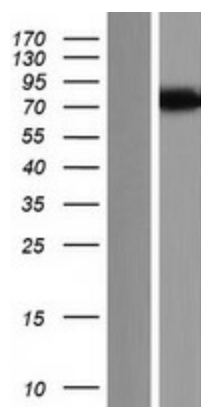
**MW:** 47 kDa

**Gene Summary:** Acts as a negative regulator of the endoplasmic reticulum stress response or unfolded protein response (UPR). Represses the transcriptional activity of CREB3 during the UPR. Recruits CREB3 into nuclear foci.[UniProtKB/Swiss-Prot Function]

### Product images:



Circular map for RC230041



Western blot validation of overexpression lysate (Cat# [LY433041]) using anti-DDK antibody (Cat# [TA50011-100]). Left: Cell lysates from untransfected HEK293T cells; Right: Cell lysates from HEK293T cells transfected with RC230041 using transfection reagent MegaTran 2.0 (Cat# [TT210002]).