

## Product datasheet for RC230040

### ZNF75 (ZNF75D) (NM\_001185063) Human Tagged ORF Clone

#### Product data:

Product Type:	Expression Plasmids
Product Name:	ZNF75 (ZNF75D) (NM_001185063) Human Tagged ORF Clone
Tag:	Myc-DDK
Symbol:	ZNF75
Synonyms:	D8C6; ZKSCAN24; ZNF75; ZNF82; ZSCAN28
Mammalian Cell Selection:	Neomycin
Vector:	pCMV6-Entry (PS100001)
E. coli Selection:	Kanamycin (25 ug/mL)
ORF Nucleotide Sequence:	>RC230040 representing NM_001185063 Red=Cloning site Blue=ORF Green=Tags(s)

TTTTGTAATACGACTCACTATAGGGCGCCGGGAATTCGTCGACTGGATCCGGTACCGAGGAGATCTGCC  
GCC**CGATCGCC**

ATGGCGATGAGAGAGCTGAACGCGGATTCATGCTCAAGCCCCAGATGGGGGCTATGTGGGAGACTAGTG  
GGTCTGTGAAAGAGAAGTCCAGTCAGAGTAAGAAATACAGCACAAAAATAGAGAATCTTGGTCTGAGAG  
CGCTTGCAGGCACCTTCTGGAGCTTCCGTTATCATGAAGCAACCGGACCGCTTGGAGACTATCAGCCAACTT  
CAGAAATTGTGCCATCAGTGGCTGAGGCCAGAGATCCACTCAAAAGAGCAGATCTTGAAATGCTGGTGT  
TAGAGCAGTTCCTGAGCATTCTGCCAAGGAGACCCAGAAGCTGGGTGCAGAAGCATCATCCACAGAAATGT  
CAAACAGGCTCTGGTCTGGTGAATTCTTGAGAGGGAGCCTGATGGAACAAAGAATGAGAGTTTGTG  
ACATTTGAAGATGTGGCTGTGTATTTTTCTGAGGAAGAGTGGCAATTATTGAATCCTCTTGAAGAAGACTC  
TCTACAATGATGTAATGCAGGATATCTATGAGACTGTCATCTCTTAGGGTTAAAGCTAAAAATGACAC  
TGGAAATGATCATCTATATCTGTTTCTACATCAGAAATACAAACATCAGGATGCGAAGTATCAAAAAAG  
ACCAGAATGAAAATTGCCAGAAAACAATGGGCAGGAAAATCCTGGTGTACACACAGTGTACAGAAAT  
GGCATCGAGCTTTTCCAAGGAAGAAAAGAAAACCTGCAACTTGTAACAAGAGCTTCCAAAACCTTAT  
GGATCTTCATGGGAAAGGCCACAGGGGAGAAACCTTTAAGTGTGAGGAAATGTGGGAAAAGCTTCAGA  
GTTAGCTCTGATCTTATTAACACCACAGAATTCACACTGGAGAGAAACCTATAAATGTCAACAATGTG  
ACAGGAGTTTAGATGGAGTTTACAGATCTTAATAAGCACTTCATGACCCATCAAGGAATAAAACCATATAG  
ATGCTCATGGTGTGGGAAAAGCTTTAGTCATAACACAAATCTACACACACACAAAGAATTCACACAGGA  
GAGAAGCCCTTTAAATGTGATGAATGTGGAAAAAGATTCAATTCAGAACTCCACCTTATTAACACCAGA  
GAACTCACACAGGTGAGCAGCCTTATACGTGTAGCTTATGCAAGAGAACTTTAGTAGGCGATCGAGCCT  
TCTTAGACACCAGAACTCCACAGAAGAAGGGAAGCATGTCTAGTGTCTCCAAC

**ACGCGT**ACGCGGCCGCTCGAGCAGAAACTCATCTCAGAAGAGGATCTGGCAGCAATGATATCCTGGATT  
ACAAGGATGACGACGATAAGGTTTAA



[View online »](#)

**Protein Sequence:** >RC230040 representing NM\_001185063  
Red=Cloning site Green=Tags(s)

MAMRELNADSCSSPQMGAMWETSGSVKENSSQSKKYSTKIENLGPESACRHFWSFRYHEATGPLETISQL  
 QKLCHQWLRPEIHSKEQILEMLVLEQFLSILPKETQNVVQKHPQNVKQALVLEFLQREPDGTKNESLL  
 TFEDVAVYFSEEEWQLLNPLEKTLYNDVMQDIYETVISLGLKLNKNDTGNHDHPI SVSTSEIQTSGCEVSKK  
 TRMKIAQKTMGRENPGDTHSVQKWHRAFPRKKRKKPATCKQELPKLMDLHGKGPTGEKPFKCQECGKSFR  
 VSSDLIKHHRHHTGEKPYKCQCDDRRFRWSSDLNKHFMTHQGIKPYRCSWCGKSF SHNTNLHHTHQRHHTG  
 EKPFKCDECGKRFIQNSHLIKHQRHTHTGEQPYTCSLCKRNF SRRSSLLRHQKLHRRREACL VSPN

TRTRPLEQKLISEEDLAANDILDYKDDDDKV

**Chromatograms:** [https://cdn.origene.com/chromatograms/mk8058\\_c04.zip](https://cdn.origene.com/chromatograms/mk8058_c04.zip)

**Restriction Sites:** SgfI-MluI

**Cloning Scheme:**



\* The last codon before the Stop codon of the ORF

**ACCN:** NM\_001185063

**ORF Size:** 1245 bp

**OTI Disclaimer:** The molecular sequence of this clone aligns with the gene accession number as a point of reference only. However, individual transcript sequences of the same gene can differ through naturally occurring variations (e.g. polymorphisms), each with its own valid existence. This clone is substantially in agreement with the reference, but a complete review of all prevailing variants is recommended prior to use. [More info](#)

**OTI Annotation:** This clone was engineered to express the complete ORF with an expression tag. Expression varies depending on the nature of the gene.

**Components:** The ORF clone is ion-exchange column purified and shipped in a 2D barcoded Matrix tube containing 10ug of transfection-ready, dried plasmid DNA (reconstitute with 100 ul of water).

**Reconstitution Method:**

1. Centrifuge at 5,000xg for 5min.
2. Carefully open the tube and add 100ul of sterile water to dissolve the DNA.
3. Close the tube and incubate for 10 minutes at room temperature.
4. Briefly vortex the tube and then do a quick spin (less than 5000xg) to concentrate the liquid at the bottom.
5. Store the suspended plasmid at -20°C. The DNA is stable for at least one year from date of shipping when stored at -20°C.

**RefSeq:** [NM\\_001185063.2](#), [NP\\_001171992.1](#)

**RefSeq ORF:** 1248 bp

**Locus ID:** 7626

**UniProt ID:** [P51815](#)

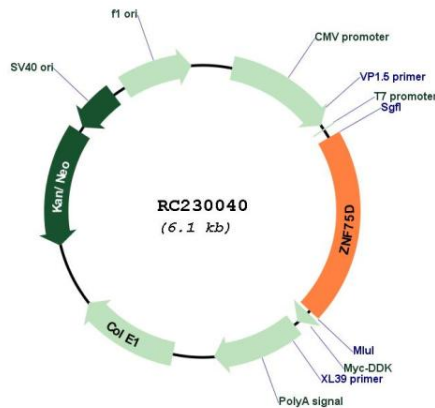
**Cytogenetics:** Xq26.3

**Protein Families:** Transcription Factors

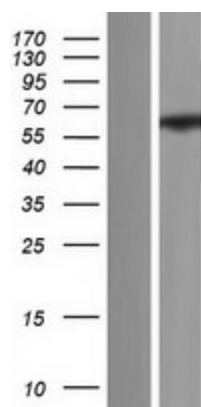
**MW:** 48.8 kDa

**Gene Summary:** This gene encodes a protein that likely functions as a transcription factor. The protein, which belongs to the ZNF75 family, includes an N-terminal SCAN domain, a KRAB box, and five C2H2-type zinc finger motifs. Another functional gene belonging to this family is located on chromosome 16, while pseudogenes have been identified on chromosomes 11 and 12. Alternative splicing results in multiple transcripts variants. [provided by RefSeq, Jun 2010]

**Product images:**



Circular map for RC230040



Western blot validation of overexpression lysate (Cat# [LY433040]) using anti-DDK antibody (Cat# [TA50011-100]). Left: Cell lysates from untransfected HEK293T cells; Right: Cell lysates from HEK293T cells transfected with RC230040 using transfection reagent MegaTran 2.0 (Cat# [TT210002]).