

## Product datasheet for RC230028

### PP11 (ENDOU) (NM\_001172439) Human Tagged ORF Clone

#### Product data:

Product Type:	Expression Plasmids
Product Name:	PP11 (ENDOU) (NM_001172439) Human Tagged ORF Clone
Tag:	Myc-DDK
Symbol:	PP11
Synonyms:	P11; PP11; PRSS26
Mammalian Cell Selection:	Neomycin
Vector:	pCMV6-Entry (PS100001)
E. coli Selection:	Kanamycin (25 ug/mL)
ORF Nucleotide Sequence:	>RC230028 representing NM_001172439 Red=Cloning site Blue=ORF Green=Tags(s)

TTTTGTAATACGACTCACTATAGGGCGCCGGGAATTCGTCGACTGGATCCGGTACCGAGGAGATCTGCC  
GCC**CGATCGCC**

ATGAGGGCTGCATCTCCCTGGTATTGGCCGTGCTGTGTGGCCTGGCCTGGGCTGGAAAAATAGAATCCT  
GTGCATCTCGATGTAATGAGAAATTTAACCGGGACGCTGCCTGCCAGTGTGACCGCCGGTGTCTCTGGCA  
TGGGAAGTGTGTAAGACTATGAACATCTGTGTACTGAGGACCACAAAGAGTCAGAGCCATTGCCACAG  
CTGGAGGAAGAGACAGAAGAGGCCCTCGCCAGCAACTTGTACTCGGCACCCACCTCTGCCAGGGCCGCT  
GCTACGAAGCCTTTGACAAGCACCACCAATGTCACTGCAATGCCCGCTGCCAAGAGTTTGGGAAGTCTG  
CAAGGATTTTGAGAGCCTGTGTAGTGACCACGAGGTCTCCACAGCAGTATGCCATAACAAAAGAGGAG  
ATTCAGAGCATCTCTGAGAAGATCTACAGGGCAGACACCAACAAAAGCCGAGAAGGAGACATCGTTCTCA  
ATAGCCAAAAGTGCATCTCCCGTCCAGAGACCAGAAACCAAGTGGATCGCTGCCAAAAGCCACTCTTCCAC  
TTATGTCAATGAGAAGCTGTTCTCCAAGCCACCTATGCAGCCTTCATCAACCTCCTCAACAACTACCAG  
CGGGCAACAGGCCATGGGGAGCACTTCAGTGCCAGGAGCTGGCCGAGCAGGACGCCTTCTCAGAGAGA  
TCATGAAGACAGCAGTTCATGAAGGAGCTCTACAGCTTCTCCATCACCAGAATCGCTATGGCTCAGAGCA  
AGAGTTTGTGCGATGACTTGAAGAATGTGTTTGGGCTCTATTCAAGAGGCAATGAAGAGGGGGACTCG  
AGTGGCTTTGAACATGTCTTCTCAGGTGAGGTAAAAAAGGCAAGTTACTGGTCCATAACTGGATCC  
GCTTCTACCTGGAGGAGAAGGAGGGTCTGGTTGACTATTACAGTCACATCTACGATGGGCCCTGGGATTC  
TTACCCCGATGTGCTGGCAATGCAGTTCAACTGGGACGGCTACTATAAGGAAGTGGGCTCTGCTTTCATC  
GGCAGCAGCCCTGAGTTTGAAGTTTGCATCTACTCCCTGTGCTTCATCGCCAGGCCAGGCAAAGTGTGCC  
AGTTAAGCCTGGGAGGATATCCCTTAGCTGTCCGGACATATACCTGGGACAAGTCCACCTATGGGAATGG  
CAAGAAGTACATCGCCACAGCCTACATAGTGTCTTCCACC

**ACGCGT**ACGCGGCCGCTCGAGCAGAACTCATCTCAGAAGAGGATCTGGCAGCAAATGATATCCTGGATT  
ACAAGGATGACGACGATAAGGTTTAA



[View online >](#)

**Protein Sequence:** >RC230028 representing NM\_001172439  
Red=Cloning site Green=Tags(s)

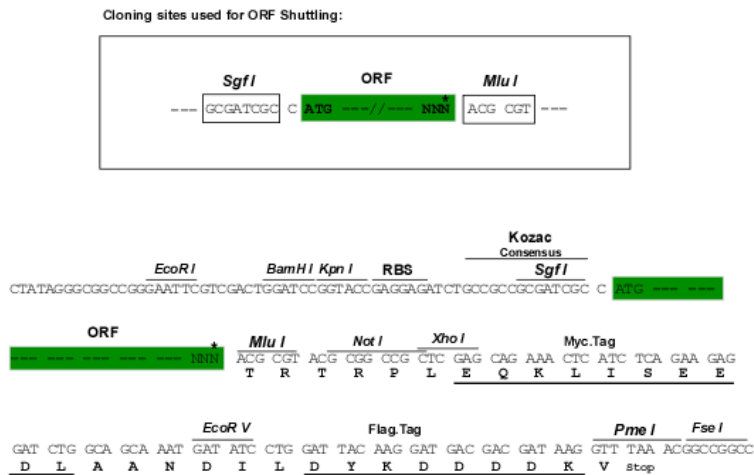
MRACISLVLAVLCGLAWAGKIESCASRCNEKFNRDAACQCDRRCLWHGNCCEDYEHLCTEDHKESEPLPQ  
 LEEETEEALASNLYSAPTSCQGRCYEAFDKHHQCHCNARCQEFGNCKDFESLCSDEHVSHSSDAITKEE  
 IQSISEKIYRADTNKAQKEDIVLNSQNCISPSSETRNQVDRCPKPLFTYVNEKLF SKPTYAAFINLLNNYQ  
 RATGHGEHFSAQELAEQDAFLREIMKTAVMKELYSFLHHQNRYGSEQEFVDDLKNMWFGLYSRGNEEGDS  
 SGFEHVFSGEVKKGKVTGFHNWIRFYLEEKGLVDYYSHIYDGPWDSYPDVLAMQFNWDGYYKEVGSAFI  
 GSSPEFEFALYSLCFIARPGKVCQLSLGGYPLAVRITYTWDKSTYGNKKYIATAYIVSSV

TRTRPLEQKLISEEDLAANDILDYKDDDDKV

**Chromatograms:** [https://cdn.origene.com/chromatograms/mk8007\\_c10.zip](https://cdn.origene.com/chromatograms/mk8007_c10.zip)

**Restriction Sites:** SgfI-MluI

**Cloning Scheme:**



\* The last codon before the Stop codon of the ORF

**ACCN:** NM\_001172439

**ORF Size:** 1230 bp

**OTI Disclaimer:** The molecular sequence of this clone aligns with the gene accession number as a point of reference only. However, individual transcript sequences of the same gene can differ through naturally occurring variations (e.g. polymorphisms), each with its own valid existence. This clone is substantially in agreement with the reference, but a complete review of all prevailing variants is recommended prior to use. [More info](#)

**OTI Annotation:** This clone was engineered to express the complete ORF with an expression tag. Expression varies depending on the nature of the gene.

**Components:** The ORF clone is ion-exchange column purified and shipped in a 2D barcoded Matrix tube containing 10ug of transfection-ready, dried plasmid DNA (reconstitute with 100 ul of water).

**Reconstitution Method:**

1. Centrifuge at 5,000xg for 5min.
2. Carefully open the tube and add 100ul of sterile water to dissolve the DNA.
3. Close the tube and incubate for 10 minutes at room temperature.
4. Briefly vortex the tube and then do a quick spin (less than 5000xg) to concentrate the liquid at the bottom.
5. Store the suspended plasmid at -20°C. The DNA is stable for at least one year from date of shipping when stored at -20°C.

**RefSeq:** [NM\\_001172439.2](#)

**RefSeq ORF:** 1233 bp

**Locus ID:** 8909

**UniProt ID:** [P21128](#)

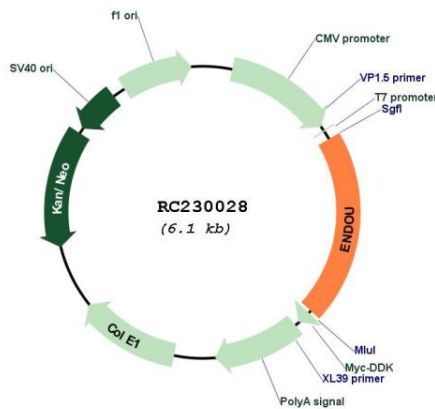
**Cytogenetics:** 12q13.11

**Protein Families:** Protease

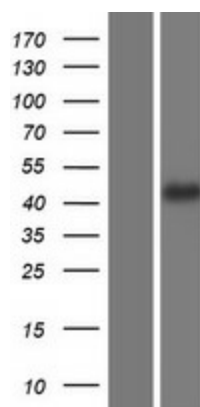
**MW:** 47.3 kDa

**Gene Summary:** This gene encodes a protein with endoribonuclease activity that binds polyuridine-enriched single-stranded RNA. This gene was initially characterized based on its high expression in placenta but was mischaracterized as a serine protease. In mouse, this gene promotes tolerance to self-antigens by regulating B cell activation-induced cell death (AICD). The protein may be useful as a tumor marker. Multiple alternatively spliced transcript variants encoding distinct protein isoforms have been found for this gene. [provided by RefSeq, Jul 2020]

**Product images:**



Circular map for RC230028



Western blot validation of overexpression lysate (Cat# [LY433028]) using anti-DDK antibody (Cat# [TA50011-100]). Left: Cell lysates from untransfected HEK293T cells; Right: Cell lysates from HEK293T cells transfected with RC230028 using transfection reagent MegaTran 2.0 (Cat# [TT210002]).