

Product datasheet for RC230021

PCYT2 (NM_001184917) Human Tagged ORF Clone

Product data:

Product Type:	Expression Plasmids
Product Name:	PCYT2 (NM_001184917) Human Tagged ORF Clone
Tag:	Myc-DDK
Symbol:	PCYT2
Synonyms:	ET; SPG82
Mammalian Cell Selection:	Neomycin
Vector:	pCMV6-Entry (PS100001)
E. coli Selection:	Kanamycin (25 ug/mL)
ORF Nucleotide Sequence:	>RC230021 representing NM_001184917 Red=Cloning site Blue=ORF Green=Tags(s)

TTTTGTAATACGACTCACTATAGGGCGGCCGGAATTCGTCGACTGGATCCGGTACCGAGGAGATCTGCC
GCC**CGATCGCC**

ATGATCCGGAACGGGCGCGGGCTGCAGGCGGCGCAGAGCAGCCGGGCCCGGGGGCAGGCGCGCCGTGA
GGGTGTGGTGGATGGCTGCTATGACATGGTGCATTACGGCCACTCCAACCAGCTGCGCCAGGCACGGGC
CATGGGTGACTACCTCATCGTAGGCGTGACACCGATGAGGAGATCGCCAAGCACAAGGGGCCCGGGT
TTCCTCAGGAGGAGATACAAGATGGTGCAGGCCATCAAATGGGTGGACGAGGTGGTCCAGCGGCTC
CCTACGCTACTACTAGAGACCCTGGACAAATACTGTGACTTCTGTGTTACGGCAATGACATCAC
CCTGACTGTAGATGGCCGGGACACCTATGAGGAAGTAAAGCAGGCTGGGAGGTACAGAGAATGCAAGCGC
ACGCAAGGGGTGTCCACCACAGACCTCGTGGGCCGATGCTGCTGGTAACCAAAGCCCATCACAGAGCC
AGGAGATGTCTCTGAGTACCGGAGTATGCAGACAGTTTTGGCAAGCCCTCACCCGATACCCGCCGG
GGACATACTTTCTCAGAAGGCTGCTCCAGTGCCTGGTGGGCGGAACCCCTGGACCGGGGTATCCAG
TTCCTGCAGACATCTCAGAAGATCATCCAGTTTCTTCTGGGAAGGAGCCCCAGCCAGGGGAGACAGTCA
TCTATGTGGTGGTGCCTTCGACCTGTTCCACATCGGGCATGTGGACTTCTGGAGAAGGTGCACAGGCT
GGCAGAGAGGCCCTACATCATCGCGGGCTTACACTTTGACCAGGAGGTCAATCACTACAAGGGGAAGAAC
TACCCCATCATGAATCTGCATGAACGGACTCTGAGCGTGGCTGCCCTGCCGTCAGTGTGAGAGTGGTGA
TTGGAGCCCGTACGCGGTACAGCAGAGCTCCTAAGTCACTTCAAGGTGGACCTGGTGTGTCACGGCAA
GACAGAAATTATCCCTGACAGGGATGGCTCCGACCCATACCAGGAGCCCAAGAGAAGGGGATCTTCCGT
CAGATTGACAGTGGCAGCAACCTCACCACAGACCTCATCGTCCAGCGGATCATCACAACAGGTTGGAGT
ATGAGGCGCAAACAGAGAAGGAAGCAAGGAGCTGGCCTTCTGGAGGCTGCCAGGCAGCAGCGGGC
ACAGCCCTGGGGAGCGCGATGGTACTTC

ACGCGTACGCGGCCGCTCGAGCAGAACTCATCTCAGAAGAGGATCTGGCAGCAAATGATATCCTGGATT
ACAAGGATGACGACGATAAGGTTTAA



Reconstitution Method:

1. Centrifuge at 5,000xg for 5min.
2. Carefully open the tube and add 100ul of sterile water to dissolve the DNA.
3. Close the tube and incubate for 10 minutes at room temperature.
4. Briefly vortex the tube and then do a quick spin (less than 5000xg) to concentrate the liquid at the bottom.
5. Store the suspended plasmid at -20°C. The DNA is stable for at least one year from date of shipping when stored at -20°C.

RefSeq: [NM_001184917.3](#)

RefSeq ORF: 1224 bp

Locus ID: 5833

UniProt ID: [Q99447](#)

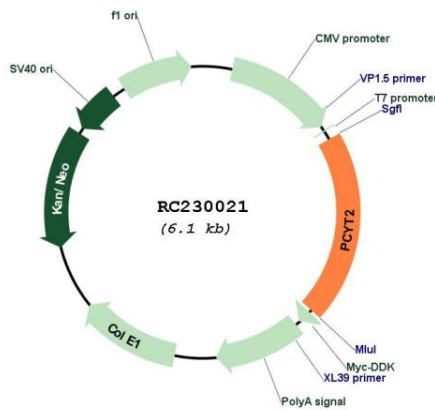
Cytogenetics: 17q25.3

Protein Pathways: Glycerophospholipid metabolism, Metabolic pathways

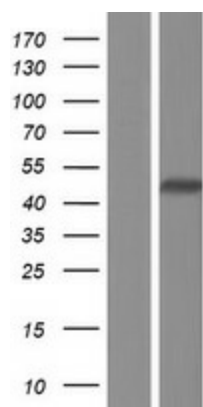
MW: 46.1 kDa

Gene Summary: This gene encodes an enzyme that catalyzes the formation of CDP-ethanolamine from CTP and phosphoethanolamine in the Kennedy pathway of phospholipid synthesis. Alternative splicing results in multiple transcript variants. [provided by RefSeq, May 2010]

Product images:



Circular map for RC230021



Western blot validation of overexpression lysate (Cat# [LY433021]) using anti-DDK antibody (Cat# [TA50011-100]). Left: Cell lysates from untransfected HEK293T cells; Right: Cell lysates from HEK293T cells transfected with RC230021 using transfection reagent MegaTran 2.0 (Cat# [TT210002]).