

Product datasheet for **RC230004**

SIGLEC6 (NM_001177547) Human Tagged ORF Clone

Product data:

Product Type:	Expression Plasmids
Product Name:	SIGLEC6 (NM_001177547) Human Tagged ORF Clone
Tag:	Myc-DDK
Symbol:	SIGLEC6
Synonyms:	CD33L; CD33L1; CD33L2; CD327; CDW327; OBBP1
Mammalian Cell Selection:	Neomycin
Vector:	pCMV6-Entry (PS100001)
E. coli Selection:	Kanamycin (25 ug/mL)
ORF Nucleotide Sequence:	>RC230004 representing NM_001177547 Red=Cloning site Blue=ORF Green=Tags(s)

TTTTGTAATACGACTCACTATAGGGCGGCCGGAATTCGTCGACTGGATCCGGTACCGAGGAGATCTGCC
GCC**CGATCGCC**

ATGCAAGGAGCCAGGAAGCCTCCGCCTCAGAGATGCTACCGCTGCTGCTGCCCTGCTGTGGGCAGCCT
CGTACTATGGTTATGGCTACTGGTTCCTGGAAGGGGCTGATGTTCCAGTGGCCACAAACGACCCAGACGA
AGAAGTGCAGGAGGAGACCCGGGGCCGATTCCACCTCCTCTGGGATCCCAGAAGGAAGAACTGCTCCCTG
AGCATCAGAGATGCCCGAGGAGGGACAATGCTGCATACTCTTTCGGTTGAAGTCCAAATGGATGAAAT
ACGGTTATACATCTTCCAAGCTCTCTGTGCGTGTGATGGCCCTGACCCACAGGCCAACATCTCCATCCC
AGGGACCCTGGAGTCTGGCCATCCCAGCAATCTGACCTGCTCTGTGCCCTGGGTCTGTGAGCAGGGGACG
CCCCCATCTTCTCCTGGATGTCAGCTGCCCCACCTCCCTGGGCCCCAGGACCACCCAGTCCCTCGGTGC
TCACAATCACCCACGGCCCCAGGACCACAGCACCAACCTCACCTGTCAGGTGACGTTCCCTGGAGCCGG
TGTGACCATGGAGAGAACCATCCAGTCAATGTCTCCTCCTTCAAATCCTGCAAAACACCTCGTCCCTC
CCTGTCTGGAGGGCCAGGCTCTGCGGCTGCTCTGTGATGCTGACGGCAACCCCTGCACACCTGAGCT
GGTCCAGGGCTCCCCGCCCTGAACGCCACCCCATCTCCAATACCGGGTCTGGAGCTGCCTCAAGT
AGGCTCTGCAGAAGAAGGAGATTTACCTGCCGTGCTCAGCATCCTCTGGGCTCCCTGCAATCTCTCTG
AGTCTCTTTGTGATTGAAACCAGAAGCAGGGCTGGTGTCTGGGAGCAGTCTGGGAGCTAGCA
TCACAACCCTGGTTTTCTCTGTGTTGCTTCTCAGAGTGAAGACTAGAAGGAAGAAAGCAGCCCA
GCCAGTGCAAAACACGGATGATGTGAACCCGTCATGGTCTCAGGCTCCAGGGTTCATCAGCACCAGTTC
CAGACAGGCATAGTTTCAGACCACCTGCTGAGGCTGGCCCATCTCAGAAGATGAGCAGGAGCTCCACT
ACGCTGTCTACACTTCCACAAGGTGCAACCTCAGGAACCAAAGGTCACCGACACTGAGTACTCAGAAAT
CAAGATACACAAG

ACGCGTACGCGGCCGCTCGAGCAGAAACTCATCTCAGAAGAGGATCTGGCAGCAATGATATCCTGGATT
ACAAGGATGACGACGATAAGGTTTAA



[View online »](#)

Protein Sequence: >RC230004 representing NM_001177547
Red=Cloning site Green=Tags(s)

MQGAQEASASEMLPLLLPLLWAASYGYGYWFLEGADVPVATNDPDEEVQEETRGRFHLLWDP RRKNC SL
 SIRDARRRDNAAYFFRLKSKWMKYGYTSSKLSVRVMALTHRPNISIPGTLESGHPSNL TCSVPWVCEQGT
 PPISWMSAAPTSLGPRTTQSSVLTITPRPQDHTNLTCQVTFPGAGVTMERTIQLNVSSFKILQNTSSL
 PVLEGQALRLLCDADGNPPAHL SWFQGFALNATPISNTGVLELPQVGSAAEEGDFTCRAQHPLGSLQISL
 SLFVHWKPEGRAGV LGAVWGASITTLVFLCVCFIFRVKTRRKKAAQP VQNTDDVNPVMVSGSRGHQH QF
 QTGIVSDHPAEAGPISEDEQELHYAVLHFHKVQPQEPKVT DTEYSEIKIHK

TRTRPLEQKLISEEDLAANDILDYKDDDDKV

Chromatograms: https://cdn.origene.com/chromatograms/mk8057_d06.zip

Restriction Sites: SgfI-MluI

Cloning Scheme:



* The last codon before the Stop codon of the ORF

ACCN: NM_001177547

ORF Size: 1203 bp

OTI Disclaimer: The molecular sequence of this clone aligns with the gene accession number as a point of reference only. However, individual transcript sequences of the same gene can differ through naturally occurring variations (e.g. polymorphisms), each with its own valid existence. This clone is substantially in agreement with the reference, but a complete review of all prevailing variants is recommended prior to use. [More info](#)

OTI Annotation: This clone was engineered to express the complete ORF with an expression tag. Expression varies depending on the nature of the gene.

Components: The ORF clone is ion-exchange column purified and shipped in a 2D barcoded Matrix tube containing 10ug of transfection-ready, dried plasmid DNA (reconstitute with 100 ul of water).

Reconstitution Method:

1. Centrifuge at 5,000xg for 5min.
2. Carefully open the tube and add 100ul of sterile water to dissolve the DNA.
3. Close the tube and incubate for 10 minutes at room temperature.
4. Briefly vortex the tube and then do a quick spin (less than 5000xg) to concentrate the liquid at the bottom.
5. Store the suspended plasmid at -20°C. The DNA is stable for at least one year from date of shipping when stored at -20°C.

RefSeq: [NM_001177547.3](#)

RefSeq ORF: 1206 bp

Locus ID: 946

UniProt ID: [O43699](#)

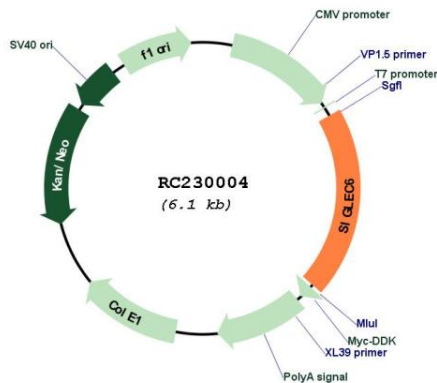
Cytogenetics: 19q13.41

Protein Families: Druggable Genome, Secreted Protein, Transmembrane

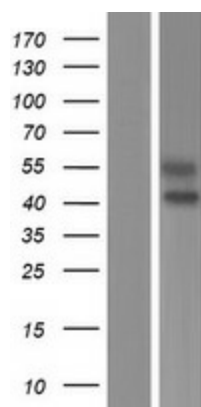
MW: 44.8 kDa

Gene Summary: This gene encodes a member of the SIGLEC (sialic acid binding immunoglobulin-like lectin) family of proteins. The encoded transmembrane receptor binds sialyl-TN glycans and leptin. Placental expression of the encoded protein is upregulated in preeclampsia. [provided by RefSeq, Jul 2016]

Product images:



Circular map for RC230004



Western blot validation of overexpression lysate (Cat# [LY433004]) using anti-DDK antibody (Cat# [TA50011-100]). Left: Cell lysates from untransfected HEK293T cells; Right: Cell lysates from HEK293T cells transfected with RC230004 using transfection reagent MegaTran 2.0 (Cat# [TT210002]).