

Product datasheet for RC230001

TAZ (WWTR1) (NM_001168278) Human Tagged ORF Clone

Product data:

Product Type: Expression Plasmids
Product Name: TAZ (WWTR1) (NM_001168278) Human Tagged ORF Clone
Tag: Myc-DDK
Symbol: TAZ
Synonyms: TAZ
Mammalian Cell Selection: Neomycin
Vector: pCMV6-Entry (PS100001)
E. coli Selection: Kanamycin (25 ug/mL)
ORF Nucleotide Sequence: >RC230001 representing NM_001168278
 Red=Cloning site Blue=ORF Green=Tags(s)

TTTTGTAATACGACTCACTATAGGGCGGCCGGAATTCGTCGACTGGATCCGGTACCGAGGAGATCTGCC
 GCC**CGGATCGCC**

ATGAATCCGGCCTCGGCGCCCCCTCCGCTCCCGCCGCTGGGCAGCAAGTGATCCACGTACGCAGGACC
 TAGACACAGACCTCGAAGCCCTTTCAACTCTGTCATGAATCCGAAGCCTAGCTCGTGGCGGAAGAAGAT
 CCTGCCGAGTCTTTCTTAAGGAGCCTGATTCGGGCTCGCACTCGGCCAGTCCAGCACCGACTCGTGC
 GCGGCCACCCGGGGCCTCGACTGGCTGGGGGTGCCAGCATGTCGGCTCGCACTCGTCCCGCGTCCC
 TGCAGCTGGGCACCGGCGGGTCTGCGGGTAGCCCCGCGCAGCAGCACGCGCACCTCCGCCAGCAGTC
 CTACGAGTGACCGACGAGCTGCCACTGCCCCCGGGCTGGGAGATGACCTTCACGGCCACTGGCCAGAGG
 TACTTCTCAATCACATAGAAAAATCACACATGGCAAGACCCTAGGAAGGCGATGAATCAGCCTCTGA
 ATCATATGAACCTCCACCTGCCGTGAGTTCACACCAAGTGCCTCAGAGGTCCATGGCAGTATCCCAGCC
 AAATCTCGTGATGAATCACCAACACCAGCAGCAGATGGCCCCAGTACCCTGAGCCAGCAGAACCACCC
 ACTCAGAACCCACCCGAGGGCTCATGAGTATGCCCAATGCGCTGACCACTCAGCAGCAGCAGCAGAGA
 AACTGCGGCTTCAGAGAATCCAGATGGAGAGAGAAAGGATTGCAATGCGCAAGAGGAGCTCATGAGGCA
 GGAAGCTGCCCTCTGTCGACAGCTCCCCATGGAAGCTGAGACTCTTCCCCAGTTCAGGCTGCTGTCAAC
 CCACCCACGATGACCCAGACATGAGATCCATCACTAATAATAGCTCAGATCCTTTCTCAATGGAGGGC
 CATATCATTGAGGGAGCAGAGCACTGACAGTGGCCTGGGGTTAGGGTGCTACAGTGTCCCAACTCC
 GGAGGACTTCTCAGCAATGTGGATGAGATGGATACAGGAGAAAACGAGGACAAACACCCATGAACATC
 AATCCCCAACAGACCCGTTTCCCTGATTTCTTACTGTCTTCCAGGAACAAACGTTGACTTAGGAACTT
 TGAATCTGAAGACCTGATCCCCCTTCAATGATGTAGAGTCTGCTCTGAACAAAAGTGAGCCCTTTCT
 AACCTGGCTG

ACGCGTACGCGGCGGCTCGAGCAGAAACTCATCTCAGAAGAGGATCTGGCAGCAATGATATCCTGGATT
 ACAAGGATGACGACGATAAGGTTTAA



[View online »](#)

Protein Sequence: >RC230001 representing NM_001168278
Red=Cloning site Green=Tags(s)

MNPASAPPLPPPQQVIHVTQDLDTDLEALFNSVMNPKPSSWRKKILPESFFKEPDSGSHSRQSSTDSS
 GGHPGPRLAGGAQHVRSHSSPASLQLGTGAGAAGSPAQQHAHLRQQSYDVTDLPLPPGWEMTFTATGQR
 YFLNHIEKITTWQDPRKAMNQPLNHNMLHPAVSSTPVPQRSMVSPNLVMNHQHQQMAPSTLSQQNHP
 TQNPPAGLMSMPNALTTQQQQQKLRLRRIQMERERIRMRQEELMRQEALCRQLPMEATLAPVQAAVN
 PPTMTPDMRSITNNSDPFLNGGPYHSREQSTDSGLGLGCYSVPTTPEDFLSNVDEMDTGENAGQTPMNI
 NPQQTRFPDFLDCLPGTNVDLGTLESEDLIPLFNDVESALNKSEPFLTWL

TRTRPLEQKLISEEDLAANDILDYKDDDDKV

Chromatograms: https://cdn.origene.com/chromatograms/mk8057_c11.zip

Restriction Sites: SgfI-MluI

Cloning Scheme:



ACCN: NM_001168278

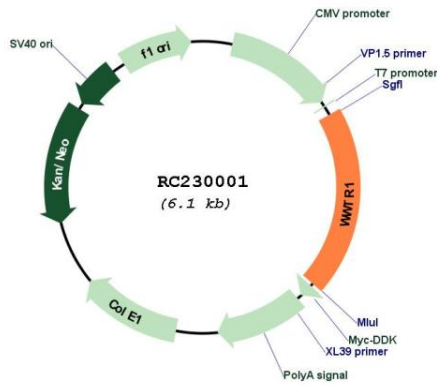
ORF Size: 1200 bp

OTI Disclaimer: Due to the inherent nature of this plasmid, standard methods to replicate additional amounts of DNA in E. coli are highly likely to result in mutations and/or rearrangements. Therefore, OriGene does not guarantee the capability to replicate this plasmid DNA. Additional amounts of DNA can be purchased from OriGene with batch-specific, full-sequence verification at a reduced cost. Please contact our customer care team at custsupport@origene.com or by calling 301.340.3188 option 3 for pricing and delivery.

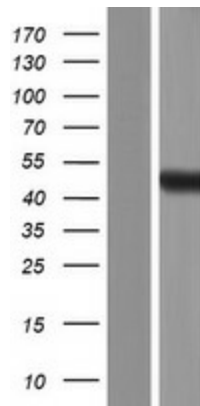
The molecular sequence of this clone aligns with the gene accession number as a point of reference only. However, individual transcript sequences of the same gene can differ through naturally occurring variations (e.g. polymorphisms), each with its own valid existence. This clone is substantially in agreement with the reference, but a complete review of all prevailing variants is recommended prior to use. [More info](#)

OTI Annotation:	This clone was engineered to express the complete ORF with an expression tag. Expression varies depending on the nature of the gene.
Components:	The ORF clone is ion-exchange column purified and shipped in a 2D barcoded Matrix tube containing 10ug of transfection-ready, dried plasmid DNA (reconstitute with 100 ul of water).
Reconstitution Method:	<ol style="list-style-type: none">1. Centrifuge at 5,000xg for 5min.2. Carefully open the tube and add 100ul of sterile water to dissolve the DNA.3. Close the tube and incubate for 10 minutes at room temperature.4. Briefly vortex the tube and then do a quick spin (less than 5000xg) to concentrate the liquid at the bottom.5. Store the suspended plasmid at -20°C. The DNA is stable for at least one year from date of shipping when stored at -20°C.
RefSeq:	NM_001168278.2
RefSeq ORF:	1203 bp
Locus ID:	25937
UniProt ID:	Q9GZV5
Cytogenetics:	3q25.1
Protein Families:	Druggable Genome, Transcription Factors
MW:	44.6 kDa
Gene Summary:	Transcriptional coactivator which acts as a downstream regulatory target in the Hippo signaling pathway that plays a pivotal role in organ size control and tumor suppression by restricting proliferation and promoting apoptosis. The core of this pathway is composed of a kinase cascade wherein STK3/MST2 and STK4/MST1, in complex with its regulatory protein SAV1, phosphorylates and activates LATS1/2 in complex with its regulatory protein MOB1, which in turn phosphorylates and inactivates YAP1 oncoprotein and WWTR1/TAZ. WWTR1 enhances PAX8 and NKX2-1/TTF1-dependent gene activation. Regulates the nuclear accumulation of SMADS and has a key role in coupling them to the transcriptional machinery such as the mediator complex. Regulates embryonic stem-cell self-renewal, promotes cell proliferation and epithelial-mesenchymal transition.[UniProtKB/Swiss-Prot Function]

Product images:



Circular map for RC230001



Western blot validation of overexpression lysate (Cat# [LY433001]) using anti-DDK antibody (Cat# [TA50011-100]). Left: Cell lysates from untransfected HEK293T cells; Right: Cell lysates from HEK293T cells transfected with RC230001 using transfection reagent MegaTran 2.0 (Cat# [TT210002]).