

Product datasheet for RC230000

PNMA6C (NM_001170944) Human Tagged ORF Clone

Product data:

Product Type:	Expression Plasmids
Product Name:	PNMA6C (NM_001170944) Human Tagged ORF Clone
Tag:	Myc-DDK
Symbol:	PNMA6C
Synonyms:	FLJ30760; FLJ77696; MGC15827
Mammalian Cell Selection:	Neomycin
Vector:	pCMV6-Entry (PS100001)
E. coli Selection:	Kanamycin (25 ug/mL)
ORF Nucleotide Sequence:	>RC230000 representing NM_001170944 Red=Cloning site Blue=ORF Green=Tags(s)

TTTTGTAATACGACTCACTATAGGGCGGCCGGAATTCGTCGACTGGATCCGGTACCGAGGAGATCTGCC
GCC**CGATCGCC**

ATGGCGGTGACCATGCTGCAGGACTGGTGCCGGTGGATGGGGTCAACGCTCGCAGGGCCCTGCTCATCC
TGGGCATCCCGGAGGACTGTGATGATGCCGAATCCAAGAGTCCCTCGAGGCTGCCCTGAGGCTATGGG
ACACTTTACAGTGTAGGCAAAGCGTTTCGAGAGGAGGATAATGCCACCGCGGCCCTGGTCGAGCTCGAC
CGGAAGTCAACTATGCTTTGGTCCCAGGAAATCCCCGCACTGGGGCCCGTGAACGTGGTCTTTG
TGCCCCGTGCTCAGGCGAGGAGTTTCTCGGTCTCGGTGCGGTGTCCACTTCCCGAGCAAGAGGGCA
GATGGTGGAGAGCGTGGCCGGCGCCCTGGGTGTGGGGCTGCGCAGGGTGTGCTGGCTGCGATCCATCGGT
CAGGCGGTCCAGCCCTGGGTGGAGGCCGTGAGGTGCCAGAGCCTGGGCGTGTTCGGGAGGGACAGC
CAGCCCCAGGGGAGGAGTCTTTGAGGTCTGGTAGACCACACCACCGAAATGCTGCATGTGTGGCAGGG
GGTCTCGGAAAGGGAGAGGAGGAGGAGGCTGCTGGAAGGCTTGCCTGGGACCGCCCTGCAGCTCGTGAC
GCGCTCCTGGCGGAGAACCCCGCAGGACGCGCAGGACTGTCTGGCGCCCTGGCCAGGTGTTTGAG
ACAACGAGTCCCAGGCGACCATCCGGTGAAGTGTCTGACCGCTCAGCAGCAGTCAGGCGAGCGTCTCTC
AGCTTTCTGTGTCGGCTGGAAGTGTCTGCTGCAGAAGGCCATGGAGAAGGAGGCCCTGGCCAGAGCATCC
GCCAGCCGTGCGCCTGAGGCAGATGCTCACCAGGGCCACTTACTGAGCCTTGGATGAAGCACTGA
GGAAGCTGAGAATGGCCGGGAGGTCTCCAAGTTTCTGGAGATGCTGGGGCTCGTTCGGGAGTCTGAGGC
ATGGGAGGCCAGTCTAGCCAGGAGCGTGAGAGCCAGACACAGGAAGGGCCCGTGGCCGGGCTGGTGCC
CAGGCTGTTGCCAGGCCAGCACTAAAGTAGAGCGGTCCAGGAGGTCCTGGTGGGAGCCAGAGGGCC
TCCTCCAGGCGAGGAGCCAGGAGGCTGAGGAGCTCCTCCAGGAGGGCTCAAGCCGTCCTGGAGGAATG
TGATAAC

ACGCGTACGCGGCCGCTCGAGCAGAACTCATCTCAGAAGAGGATCTGGCAGCAAATGATATCCTGGATT
ACAAGGATGACGACGATAAGGTTTAA



Protein Sequence: >RC230000 representing NM_001170944
Red=Cloning site Green=Tags(s)

MAVTMLQDWCWGMGNARRGLLILGIPEDCDDAEFQESLEAALRPMGHFTVLGKAFREEDNATAALVELD
 REVNYALVPREIPGTGGPWNVVFVPRCSGEEFLGLGRVFHFPEQEGQMVESVAGALGVGLRRVCWLRSIG
 QAVQPWVEAVRCQSLGVFSGRDQPAPGEESEFEVLDHTTEMLHVWQGVSERERRRRLLEGLRGTALQLVH
 ALLAENPARTAQDCLAALAQVFGDNEAQATIRVKCLTAQQQSGERLSAFVLRLEVLQKAMEKEALARAS
 ADRVRLRQMLTRAHLTEPLDEALRKLRMAGRSPSFLLEMLGLVRESEAWESLARSVRAQTQEGAGARAGA
 QAVARASTKVEAVPGGPGREPEGLLQAGGQAEELLQEGLKPVLEECDN

TRTRPLEQKLISEEDLAANDILDYKDDDDKV

Chromatograms: https://cdn.origene.com/chromatograms/mk8103_b09.zip

Restriction Sites: SgfI-MluI

Cloning Scheme:



* The last codon before the Stop codon of the ORF

ACCN: NM_001170944

ORF Size: 1197 bp

OTI Disclaimer: The molecular sequence of this clone aligns with the gene accession number as a point of reference only. However, individual transcript sequences of the same gene can differ through naturally occurring variations (e.g. polymorphisms), each with its own valid existence. This clone is substantially in agreement with the reference, but a complete review of all prevailing variants is recommended prior to use. [More info](#)

OTI Annotation: This clone was engineered to express the complete ORF with an expression tag. Expression varies depending on the nature of the gene.

Components: The ORF clone is ion-exchange column purified and shipped in a 2D barcoded Matrix tube containing 10ug of transfection-ready, dried plasmid DNA (reconstitute with 100 ul of water).

- Reconstitution Method:**
1. Centrifuge at 5,000xg for 5min.
 2. Carefully open the tube and add 100ul of sterile water to dissolve the DNA.
 3. Close the tube and incubate for 10 minutes at room temperature.
 4. Briefly vortex the tube and then do a quick spin (less than 5000xg) to concentrate the liquid at the bottom.
 5. Store the suspended plasmid at -20°C. The DNA is stable for at least one year from date of shipping when stored at -20°C.

RefSeq: [NM_001170944.1](#), [NP_001164415.1](#)

RefSeq Size: 2262 bp

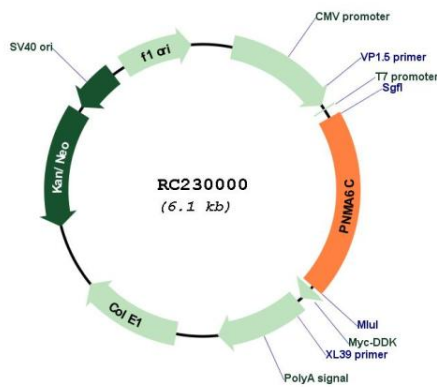
RefSeq ORF: 1199 bp

Locus ID: 100287428

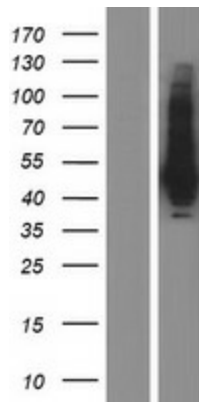
Cytogenetics: Xq28

MW: 43.9 kDa

Product images:



Circular map for RC230000



Western blot validation of overexpression lysate (Cat# [LY433000]) using anti-DDK antibody (Cat# [TA50011-100]). Left: Cell lysates from untransfected HEK293T cells; Right: Cell lysates from HEK293T cells transfected with RC230000 using transfection reagent MegaTran 2.0 (Cat# [TT210002]).