

## Product datasheet for RC229994

### TMPRSS4 (NM\_001173552) Human Tagged ORF Clone

#### Product data:

**Product Type:** Expression Plasmids  
**Product Name:** TMPRSS4 (NM\_001173552) Human Tagged ORF Clone  
**Tag:** Myc-DDK  
**Symbol:** TMPRSS4  
**Synonyms:** CAP2; CAPH2; MT-SP2; TMPRSS3  
**Mammalian Cell Selection:** Neomycin  
**Vector:** pCMV6-Entry (PS100001)  
**E. coli Selection:** Kanamycin (25 ug/mL)  
**ORF Nucleotide Sequence:** >RC229994 representing NM\_001173552  
 Red=Cloning site Blue=ORF Green=Tags(s)

TTTTGTAATACGACTCACTATAGGGCGCCGGGAATTCGTCGACTGGATCCGGTACCGAGGAGATCTGCC  
 GCC**CGATCGCC**

ATGGATCCTGACAGTGATCAACCTCTGAACAGCCTCGTCAAGGTGATTCTGGATAAATACTACTTCTCT  
 GCGGGCAGCCTCTCCACTTCATCCCGAGGAAGCAGCTGTGTGACGGAGAGCTGGACTGTCCCTTGGGGGA  
 GGACGAGGAGCACTGTGTCAAGAGCTTCCCGAAGGGCCTGCAGTGGCAGTCCGCCTCTCCAAGGACCGA  
 TCCCACTGCAGGTGCTGGACTCGGCCACAGGAACTGGTTCTCTGCCTGTTTCGACAACCTCACAGAAG  
 CTCTCGTGTGACAGCCTGTAGGCAGATGGGCTACAGCAGCAAACCCACTTTCAGAGCTGTGGAGATTGG  
 CCCAGACCAGGATCTGGATGTTGTTGAAATCACAGAAAACAGCCAGGAGCTTCGCATGCGGAACTCAAGT  
 GGGCCCTGTCTCTCAGGCTCCCTGGTCTCCCTGCACTGTCTTGCCTGTGGGAAGAGCCTGAAGACCCCC  
 GTGTGGTGGTGGGGAGGAGGCCTCTGTGGATTCTTGGCCTTGGCAGGTGAGCATCCAGTACGACAAAACA  
 GCACGTCTGTGGAGGGAGCATCCTGGACCCCCACTGGGTCTCACGGCAGCCACTGCTTCAGGAAACAT  
 ACCGATGTGTTCAACTGGAAGGTGCGGGCAGGCTCAGACAAACTGGGCAGCTTCCCATCCCTGGCTGTGG  
 CCAAGATCATCATCATTGAATTCACCCCATGTACCCAAAGACAATGACATCGCCCTCATGAAGCTGCA  
 GTTCCCCTCACTTTCTCAGGCACAGTCAGGCCCATCTGTCTGCCCTTCTTTGATGAGGAGCTCACTCCA  
 GCCACCCCACTCTGGATCATTGGATGGGCTTTACGAAGCAGAATGGAGGGAAGATGCTGACATACTGC  
 TGCAGGCGTCAGTCCAGGTCATTGACAGCACACGGTGCAATGCAGACGATGCGTACCAGGGGAAGTCAC  
 CGAGAAGATGATGTGTGACAGCATCCCGAAGGGGGTGTGGACACCTGCCAGGTTGACAGTGGTGGCCCC  
 CTGATGTACCAATCTGACCAGTGGCATGTGGTGGGCATCGTTAGTTGGGGCTATGGCTGCGGGGGCCCGA  
 GCACCCAGGAGTATACACCAAGGTCTCAGCCTATCTCAACTGGATCTACAATGTCTGGAAGGCTGAGCT  
 G

**ACGCGT**ACGCGGCCGCTCGAGCAGAACTCATCTCAGAAGAGGATCTGGCAGCAAATGATATCTGGATT  
 ACAAGGATGACGACGATAAGGTTTAA



[View online »](#)

**Protein Sequence:** >RC229994 representing NM\_001173552  
Red=Cloning site Green=Tags(s)

MDPDSQPLNSLVKVIDKYYFLCGQPLHFIPRKQLCDGELDCPLGEDEEHCVKSFPEGPAVAVRLSKDR  
 STLQVLDSATGNWFSACFDNFTEALAEACRQMGYSSKPTFRAVEIGPDQDLDVVEITENSQELMRNSS  
 GPCLSGSLVSLHCLACGKSLKTPRVVGGEEASVDSWPWQVSIQYDKQHVCGGSILDPHWLTAACHFRKH  
 TDVFNWVVRAGSDKLGSPSLAVAKIIIEFNPMYPKDNDIALMKLQFPLTFSGTVRPICLPFFDEELTP  
 ATPLWIIIGWFTKQNGGKMSDILLQASVQVIDSTRCNADDAYQGEVTEKMMACAGIPEGGVDTCCQDSSGGP  
 LMYQSDQWHVVGIVSWGYGCGGPSTPGVYTKVSAYLNWIYNVWKAEL

TRTRPLEQKLISEEDLAANDILDYKDDDDKLV

**Chromatograms:** [https://cdn.origene.com/chromatograms/mk8057\\_b03.zip](https://cdn.origene.com/chromatograms/mk8057_b03.zip)

**Restriction Sites:** SgfI-MluI

**Cloning Scheme:**



**ACCN:** NM\_001173552

**ORF Size:** 1191 bp

**OTI Disclaimer:** The molecular sequence of this clone aligns with the gene accession number as a point of reference only. However, individual transcript sequences of the same gene can differ through naturally occurring variations (e.g. polymorphisms), each with its own valid existence. This clone is substantially in agreement with the reference, but a complete review of all prevailing variants is recommended prior to use. [More info](#)

**OTI Annotation:** This clone was engineered to express the complete ORF with an expression tag. Expression varies depending on the nature of the gene.

**Components:** The ORF clone is ion-exchange column purified and shipped in a 2D barcoded Matrix tube containing 10ug of transfection-ready, dried plasmid DNA (reconstitute with 100 ul of water).

**Reconstitution Method:**

1. Centrifuge at 5,000xg for 5min.
2. Carefully open the tube and add 100ul of sterile water to dissolve the DNA.
3. Close the tube and incubate for 10 minutes at room temperature.
4. Briefly vortex the tube and then do a quick spin (less than 5000xg) to concentrate the liquid at the bottom.
5. Store the suspended plasmid at -20°C. The DNA is stable for at least one year from date of shipping when stored at -20°C.

**RefSeq:** [NM\\_001173552.1](#), [NP\\_001167023.1](#)

**RefSeq ORF:** 1194 bp

**Locus ID:** 56649

**UniProt ID:** [Q9NRS4](#)

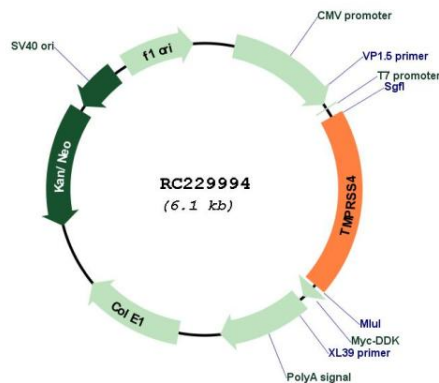
**Cytogenetics:** 11q23.3

**Protein Families:** Druggable Genome, Protease, Transmembrane

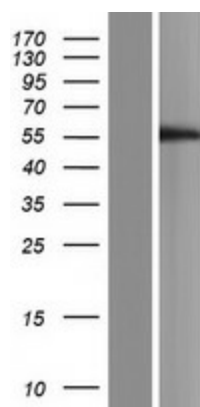
**MW:** 44.2 kDa

**Gene Summary:** This gene encodes a member of the serine protease family. Serine proteases are known to be involved in a variety of biological processes, whose malfunction often leads to human diseases and disorders. This gene was identified as a gene overexpressed in pancreatic carcinoma. The encoded protein is membrane bound with a N-terminal anchor sequence and a glycosylated extracellular region containing the serine protease domain. Multiple transcript variants encoding different isoforms have been found for this gene. [provided by RefSeq, Jul 2008]

**Product images:**



Circular map for RC229994



Western blot validation of overexpression lysate (Cat# [LY432994]) using anti-DDK antibody (Cat# [TA50011-100]). Left: Cell lysates from untransfected HEK293T cells; Right: Cell lysates from HEK293T cells transfected with RC229994 using transfection reagent MegaTran 2.0 (Cat# [TT210002]).