

Product datasheet for RC229992

Gamma taxilin (TXLNG) (NM_001168683) Human Tagged ORF Clone

Product data:

Product Type:	Expression Plasmids
Product Name:	Gamma taxilin (TXLNG) (NM_001168683) Human Tagged ORF Clone
Tag:	Myc-DDK
Symbol:	Gamma taxilin
Synonyms:	CXorf15; ELRG; FIAT; LSR5; TXLNGX
Mammalian Cell Selection:	Neomycin
Vector:	pCMV6-Entry (PS100001)
E. coli Selection:	Kanamycin (25 ug/mL)
ORF Nucleotide Sequence:	>RC229992 representing NM_001168683 Red=Cloning site Blue=ORF Green=Tags(s)

TTTTGTAATACGACTCACTATAGGGCGGCCGGAATTCGTCGACTGGATCCGGTACCGAGGAGATCTGCC
GCC**CGATCGCC**

ATGGCGACGCGGGTAGAGGAGGCAGCGCGGGGAAGAGGCGCGGCCGAAGAGGCGACTGAGGCCGGAC
GGGGCGGACGCGCAGCGAGCCCGCGGCAGAAGCTGGAGGAGAGCAGGAGTGTTCAGAAGCAAATGAAGAT
CCTGCAGAAGAAGCAAGCCAGATTGTGAAAGAGAAAGTTCCTTGCAGAGTGAACATAGCAAGGCTATC
TTGGCAAGAAGCAAGCTAGAATCTTTTGCAGAGAACTTCAGCGTCACAATAAGACGTTAAAGGAGGAAA
ATATGCAGCAGGCACGAGAGGAAGAAGAACGACGTAAGAAGCAACTGCACATTTCCAGATTACCTTAAA
TGAAATTCAGCCAGCTGGAGCAGCATGACATCCACAAGCCAAACTCCGACAGGAAAACATTGAGCTG
GGGAGAAAGCTAAAGAAGCTCATCGAACGTACGCACTGAGGGAAGAGCACATTGATAAGGTGTTCAAAC
ATAAGGAACTGCAACAGCAGCTCGTGGATGCCAACTGCAGCAAACGACACAACATGATAAAAAGAGCTGA
TGAAAAACATCAGAGAGAGAGAGTTTTTATTAAGAAGAGCAGAGAAATCGAGGCACAAAATACGAACAA
ATGAAACAGCAAGAAGTACAACAAAACAGCAGCTTTCTTTATATGGATAAGTTTGAAGAATTCAGAG
CTACCATGGCAAAAAGCAATGAAGTGTTCACACCTTCAGACAGGAAATGGAAAAGATGACAAAAGAAAT
TAAAAAAGTGGAAAAGAAAACAATAATTTGGCGTACCAAAATGGGAAAACAATAATAAGCACTTCTGCAA
ATGGCTGAAGAGAAAACAGTCCGTGATAAAGAGTACAAGGCCCTTCAAATAAACTGGAACGGTTAGAGA
AGCTGTGCAGGGCTCTTCAGACAGAAAGGAATGAGCTCAATGAGAAGGTGGAAGTCTGAAAAGAGCAGGT
ATCCATCAAAGCGCCATCAAAGCGGCGAACAGGGATTTAGCAACACCTGTGATGCAGCCCTGTACTGCC
CTGGATTCTCACAAGGAGCTGAACACTTCTCGAAAAGAGCCCTGGGAGCGCACCTGGAGGCTGAGCCCA
AGAGTCAGAGAAGCGCTGTGCAAAAAGCCCCGTCCACAGGCTCTGCTCCGGCCATCGAGTCGGTTGAC

ACGCGTACGCGGCCGCTCGAGCAGAAACTCATCTCAGAAGAGGATCTGGCAGCAAATGATATCCTGGATT
ACAAGGATGACGACGATAAGGTTTAA



[View online »](#)

Protein Sequence: >RC229992 representing NM_001168683
Red=Cloning site Green=Tags(s)

MATRVEEAARGRGGGAEATEAGRGGRRRSPRQKLEESRSVQKQMKILQKKQAQIVKEKVLQSEHSKAI
 LARSKLESLCRELQRHNKTLKEENMQQAREEEERRKEATAHFQITLNEIQAQLEQHDIHNAKLQENIEL
 GEKLLKLEIEQYALREEHIDKVFHKHELQQQLVDAKLQQTTLIKEADEKHQREREFLLKEATESRHKYEQ
 MKQQEVQLKQQLSLYMDKFEFQTMAKSNELFTFRQEMKMTKKIKKLEKETIIWRWKWENNNKALLQ
 MAEEKTVRDKEYKALQIKLERLEKLCRALQTERNELNEKVEVLKEQVSIKAAIKAANRDLATPVMQPCTA
 LDShkelntSSKRALGAHLEAEPKSQRSVQKPPSTGSAPAIESVD

TRTRPLEQKLISEEDLAANDILDYKDDDDKV

Chromatograms: https://cdn.origene.com/chromatograms/mk8037_a01.zip

Restriction Sites: SgfI-MluI

Cloning Scheme:



* The last codon before the Stop codon of the ORF

ACCN: NM_001168683

ORF Size: 1188 bp

OTI Disclaimer: The molecular sequence of this clone aligns with the gene accession number as a point of reference only. However, individual transcript sequences of the same gene can differ through naturally occurring variations (e.g. polymorphisms), each with its own valid existence. This clone is substantially in agreement with the reference, but a complete review of all prevailing variants is recommended prior to use. [More info](#)

OTI Annotation: This clone was engineered to express the complete ORF with an expression tag. Expression varies depending on the nature of the gene.

Components: The ORF clone is ion-exchange column purified and shipped in a 2D barcoded Matrix tube containing 10ug of transfection-ready, dried plasmid DNA (reconstitute with 100 ul of water).

Reconstitution Method:

1. Centrifuge at 5,000xg for 5min.
2. Carefully open the tube and add 100ul of sterile water to dissolve the DNA.
3. Close the tube and incubate for 10 minutes at room temperature.
4. Briefly vortex the tube and then do a quick spin (less than 5000xg) to concentrate the liquid at the bottom.
5. Store the suspended plasmid at -20°C. The DNA is stable for at least one year from date of shipping when stored at -20°C.

RefSeq: [NM_001168683.1](#), [NP_001162154.1](#)

RefSeq ORF: 1191 bp

Locus ID: 55787

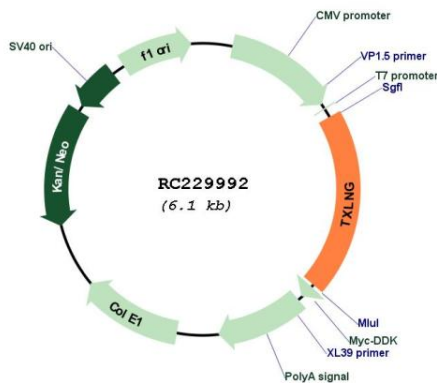
UniProt ID: [Q9NUQ3](#)

Cytogenetics: Xp22.2

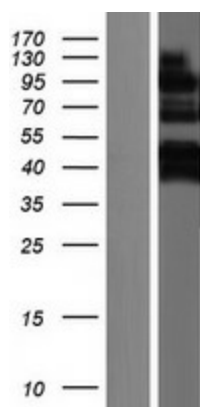
MW: 46.7 kDa

Gene Summary: This gene encodes a member of the taxilin family. The encoded protein binds to the C-terminal coiled-coil region of syntaxin family members 1A, 3A and 4A, and may play a role in intracellular vesicle trafficking. This gene is up-regulated by lipopolysaccharide and the gene product may be involved in cell cycle regulation. The related mouse protein was also shown to inhibit activating transcription factor 4-mediated transcription and thus regulate bone mass accrual. Alternatively spliced transcript variants encoding different isoforms have been found for this gene. [provided by RefSeq, Dec 2009]

Product images:



Circular map for RC229992



Western blot validation of overexpression lysate (Cat# [LY432992]) using anti-DDK antibody (Cat# [TA50011-100]). Left: Cell lysates from untransfected HEK293T cells; Right: Cell lysates from HEK293T cells transfected with RC229992 using transfection reagent MegaTran 2.0 (Cat# [TT210002]).