

## Product datasheet for RC229981

### SIGLEC6 (NM\_001177548) Human Tagged ORF Clone

#### Product data:

**Product Type:** Expression Plasmids  
**Product Name:** SIGLEC6 (NM\_001177548) Human Tagged ORF Clone  
**Tag:** Myc-DDK  
**Symbol:** SIGLEC6  
**Synonyms:** CD33L; CD33L1; CD33L2; CD327; CDW327; OBBP1  
**Mammalian Cell Selection:** Neomycin  
**Vector:** pCMV6-Entry (PS100001)  
**E. coli Selection:** Kanamycin (25 ug/mL)  
**ORF Nucleotide Sequence:** >RC229981 representing NM\_001177548  
 Red=Cloning site Blue=ORF Green=Tags(s)

TTTTGTAATACGACTCACTATAGGGCGCCGGGAATTCGTCGACTGGATCCGGTACCGAGGAGATCTGCC  
 GCC**CGATCGC**C

ATG**CAGGGAGCCAGGAAGCCTCCGCCTCAGAGATGCTACCGCTGCTGCTGCCCTGCTGTGGCAGGGG**  
**CCCTGGCTCAGGAGCGGAGATTCAGCTGGAGGGGCCAGAGTCACTGACGGTGCAGGAGGGTCTGTGCGT**  
**CCTCGTACCTGCAGATTGCCACTACCCTTCAGCCTCGTACTATGGTTATGGTACTGGTTCTTGAA**  
**GGGGCTGATGTTCCAGTGGCCACAAACGACCCAGACGAAGAAGTGCAGGAGGAGACCCGGGGCCGATTCC**  
**ACCTCCTCTGGGATCCCAGAAGGAAGAAGTCTCCCTGAGCATCAGAGATGCCCGGAGGAGGACAATGC**  
**TGCATACTCTTTTCGGTTGAAGTCCAAATGGATGAAATACGGTTATACATCTTCCAAGCTCTCTGTGCGT**  
**GTGATGGCCCTGACCCACAGGCCAACATCTCCATCCCAGGGACCCTGGAGTCTGGCCATCCCAGCAATC**  
**TGACCTGCTCTGTGCCCTGGGTCTGTGAGCAGGGGACGCCCCCATCTTCTCCTGGATGTGAGTGGCCC**  
**CACCTCCTGGGCCCCAGGACCACCCAGTCCCTCGGTGCTCACAATCACCCACGGCCCCAGGACCACAGC**  
**ACCAACCTCACCTGTGAGGTGACGTTCCCTGGAGCCGGTGTGACCATGGAGAGAACCATCCAGCTCAATG**  
**TCTCCTGGATGTTGAGGCGGCCACCTCTTCCACCCAGATGCTCCACAGAAAGTGGCCATCAGCATCTT**  
**CCAAGGAAACAGCGCAGCCTTCAAAATCCTGCAAAACACCTCGTCCCTCCCTGTCTGAGGGCCAGGCT**  
**CTGCGGCTGCTCTGTGATGCTGACGGCAACCCCTGCACACCTGAGCTGGTTCCAGGGCTTCCCCGCC**  
**TGAACGCCACCCCATCTCCAATACCGGGTCTGGAGCTGCTCAAGTGGGTCTGCAGAAGAAGGAGA**  
**TTTCACCTGCCGTGCTCAGCATCTCTGGGCTCCCTGCAAAATCTCTGAGTCTCTTTGTGATTGGAAA**  
**CCAGAAGGCAGGCTGGTGGTGTCTGGGAGCAGTCTGGGAGCTAGCATCACAACCTGGTTTTCTCT**  
**GTGTTTGCTTCTTCCAGGTCATCAGCACCAGTTCAGACAGGCA**

**ACGCGT**ACGCGGCCGCTCGAGCAGAACTCATCTCAGAAGAGGATCTGGCAGCAATGATATCTGGATT  
 ACAAGGATGACGACGATAAGGTTTAA



[View online >](#)



**Reconstitution Method:**

1. Centrifuge at 5,000xg for 5min.
2. Carefully open the tube and add 100ul of sterile water to dissolve the DNA.
3. Close the tube and incubate for 10 minutes at room temperature.
4. Briefly vortex the tube and then do a quick spin (less than 5000xg) to concentrate the liquid at the bottom.
5. Store the suspended plasmid at -20°C. The DNA is stable for at least one year from date of shipping when stored at -20°C.

**RefSeq:** [NM\\_001177548.3](#)

**RefSeq ORF:** 1170 bp

**Locus ID:** 946

**UniProt ID:** [O43699](#)

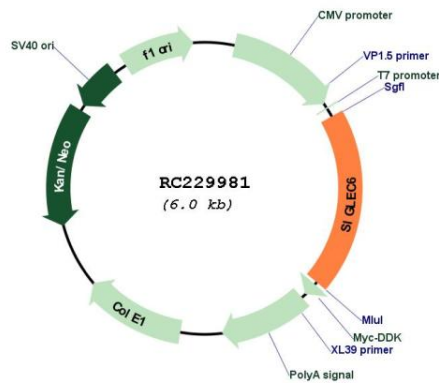
**Cytogenetics:** 19q13.41

**Protein Families:** Druggable Genome, Secreted Protein, Transmembrane

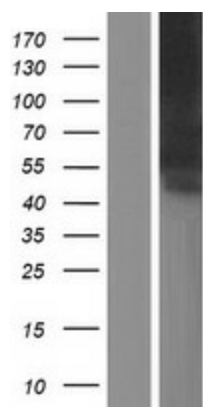
**MW:** 43.1 kDa

**Gene Summary:** This gene encodes a member of the SIGLEC (sialic acid binding immunoglobulin-like lectin) family of proteins. The encoded transmembrane receptor binds sialyl-TN glycans and leptin. Placental expression of the encoded protein is upregulated in preeclampsia. [provided by RefSeq, Jul 2016]

## Product images:



Circular map for RC229981



Western blot validation of overexpression lysate (Cat# [LY432981]) using anti-DDK antibody (Cat# [TA50011-100]). Left: Cell lysates from untransfected HEK293T cells; Right: Cell lysates from HEK293T cells transfected with RC229981 using transfection reagent MegaTran 2.0 (Cat# [TT210002]).