

Product datasheet for RC229969

FCRLM1 (FCRLA) (NM_001184866) Human Tagged ORF Clone

Product data:

Product Type:	Expression Plasmids
Product Name:	FCRLM1 (FCRLA) (NM_001184866) Human Tagged ORF Clone
Tag:	Myc-DDK
Symbol:	FCRLM1
Synonyms:	FCRL; FCRL1; FCRLb; FCRLc1; FCRLc2; FCRLd; FCRLe; FCRLM1; FCRLX; FCRX; FREB
Mammalian Cell Selection:	Neomycin
Vector:	pCMV6-Entry (PS100001)
E. coli Selection:	Kanamycin (25 ug/mL)
ORF Nucleotide Sequence:	>RC229969 representing NM_001184866 Red=Cloning site Blue=ORF Green=Tags(s)

TTTTGTAATACGACTCACTATAGGGCGGCCGGAATTCGTCGACTGGATCCGGTACCGAGGAGATCTGCC
GCC**CGATCGCC**

ATGTTGAAGAAAATCAGTGTGGGGTTCAGGAGACCTAAACACAGTCACCATGAAGCTGGGCTGTGTCC
TCATGGCTGGGCCCTACCTTCCCTGGTGTGCTCTGGTGGCCAGATGCTACTGGCAGCTGGATG
TCATGCCCTGCCAGTTTGGAGCGCTGCAGTGTGAGGGACCTGTCTGCACTGAGGAGAGCAGCTGCCAC
ACGGAGGATGACTTGACTGATGCAAGGGAAGCTGGCTTCCAGGTCAAGGCCTACACTTTCAGTGAACCT
TCCACCTGATTGTCTATGACTGGCTGATCCTCCAAGTCCAGCCAAGCCAGTTTTTGAAGGGGACCT
GCTGGTTCTGCGCTGCCAGGCCTGGCAAGACTGGCCACTGACTCAGGTGACCTTCTACCGAGATGGCTCA
GCTCTGGGTCCCCCGGGCTAACAGGGAATTCTCCATCACCGTGGTACAAAAGGAGACAGCGGGCACT
ACCACTGCAGTGGCATCTTCCAGAGCCCTGGTCTGGGATCCCAGAAACAGCATCTGTTGTGGCTATCAC
AGTCCAAGAACTGTTCCAGCGCAATTCTCAGAGCTGTACCCTCAGCTGAACCCCAAGCAGGAAGCCCC
ATGACCTGAGTTGTGAGACAAAGTTGCCCTGCAGAGGTGAGTGGCCGCTCCTTCTCCTTCTACA
AGGATGGAAGGATAGTGCAAAGCAGGGGGCTCTCCTCAGAATCCAGATCCCCACAGCTTCAAGATCA
CTCCGGGTCACTGGTGTGAGGCAGCCACTGAGGACAACCAAGTTTGGAAACAGAGCCCCAGCTAGAG
ATCAGAGTGCAGGGTCTTCCAGCTCTGCTGCACCTCCACATGAATCCAGCTCCTCAGAAATCAGCTG
CTCCAGGAATGCTCCTGAGGAGGCCCTGGGCCTCTGCCTCCGCCCAACCCCATCTTCTGAGGATCC
AGGCTTTTCTTCTCCTCTGGGGATGCCAGATCCTCATCTGTATCACCAGATGGGCCTTCTCTCAAACAC
ATGCAGGATGTGAGAGTCTCCTCGGTACCTGCTCATGGAGTTGAGGGAATTATCTGGCCACCGGAAGC
CTGGGACCACAAAGGCTACTGCTGAA

ACGCGTACGCGGCCGCTCGAGCAGAAACTCATCTCAGAAGAGGATCTGGCAGCAATGATATCCTGGATT
ACAAGGATGACGACGATAAGGTTTAA



[View online >](#)

Protein Sequence: >RC229969 representing NM_001184866
Red=Cloning site Green=Tags(s)

MLKKISVGVAGDLNVTMKLGCVLMAWALYL SLGVLWVAQMLLAAGCHAAASFETLQCEGPVCTEESCH
 TEDDLTDAREAGFQVKAYTFSEPFHLIVSYDWLILQGPAPVFEGLLVLRCAWQDWPLTQVTFYRDGS
 ALGPPGPNREFSITVVQKADSGHYHCSGIFQSPGPGIPETASVVAITVQELFPAPILRAVPSAEPQAGSP
 MTLSCQTKLPLQRSAARLLFSFYKDGRIVQSRGLSSEFQIPTASEDHSGSYWCEAATEDNQVWKQSPQLE
 IRVQGASSAAPPPTLNPAPQKSAAPGTAPEEAPGPLPPPPTPSSSEDPGFSSPLGMPDPHLYHQMGLLLKH
 MQDVRVLLGHLMLRELRELSGHRKPGTTKATAE

TRTRPLEQKLISEEDLAANDILDYKDDDDKV

Chromatograms: https://cdn.origene.com/chromatograms/mk8056_b03.zip

Restriction Sites: SgfI-MluI

Cloning Scheme:



* The last codon before the Stop codon of the ORF

ACCN: NM_001184866

ORF Size: 1146 bp

OTI Disclaimer: The molecular sequence of this clone aligns with the gene accession number as a point of reference only. However, individual transcript sequences of the same gene can differ through naturally occurring variations (e.g. polymorphisms), each with its own valid existence. This clone is substantially in agreement with the reference, but a complete review of all prevailing variants is recommended prior to use. [More info](#)

OTI Annotation: This clone was engineered to express the complete ORF with an expression tag. Expression varies depending on the nature of the gene.

Components: The ORF clone is ion-exchange column purified and shipped in a 2D barcoded Matrix tube containing 10ug of transfection-ready, dried plasmid DNA (reconstitute with 100 ul of water).

Reconstitution Method:

1. Centrifuge at 5,000xg for 5min.
2. Carefully open the tube and add 100ul of sterile water to dissolve the DNA.
3. Close the tube and incubate for 10 minutes at room temperature.
4. Briefly vortex the tube and then do a quick spin (less than 5000xg) to concentrate the liquid at the bottom.
5. Store the suspended plasmid at -20°C. The DNA is stable for at least one year from date of shipping when stored at -20°C.

RefSeq: [NM_001184866.1](#), [NP_001171795.1](#)

RefSeq ORF: 1098 bp

Locus ID: 84824

UniProt ID: [Q7L513](#)

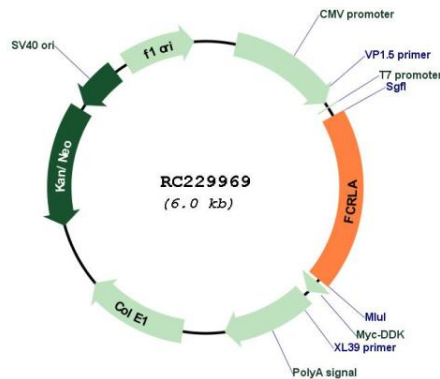
Cytogenetics: 1q23.3

Protein Families: Secreted Protein, Transmembrane

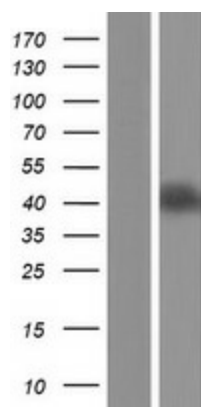
MW: 41.6 kDa

Gene Summary: This gene encodes a protein similar to receptors for the Fc fragment of gamma immunoglobulin (IgG). These receptors, referred to as FCGRs, mediate the destruction of IgG-coated antigens and of cells induced by antibodies. This encoded protein is selectively expressed in B cells, and may be involved in their development. This protein may also be involved in the development of lymphomas. Multiple alternatively spliced transcript variants that encode different protein isoforms have been described for this gene. [provided by RefSeq, Aug 2011]

Product images:



Circular map for RC229969



Western blot validation of overexpression lysate (Cat# [LY432969]) using anti-DDK antibody (Cat# [TA50011-100]). Left: Cell lysates from untransfected HEK293T cells; Right: Cell lysates from HEK293T cells transfected with RC229969 using transfection reagent MegaTran 2.0 (Cat# [TT210002]).