

Product datasheet for RC229968

LMX1A (NM_001174069) Human Tagged ORF Clone

Product data:

Product Type:	Expression Plasmids
Product Name:	LMX1A (NM_001174069) Human Tagged ORF Clone
Tag:	Myc-DDK
Symbol:	LMX1A
Synonyms:	DFNA7; LMX1; LMX1.1
Mammalian Cell Selection:	Neomycin
Vector:	pCMV6-Entry (PS100001)
E. coli Selection:	Kanamycin (25 ug/mL)
ORF Nucleotide Sequence:	>RC229968 representing NM_001174069 Red=Cloning site Blue=ORF Green=Tags(s)

TTTTGTAATACGACTCACTATAGGGCGGCCGGAATTCGTCGACTGGATCCGGTACCGAGGAGATCTGCC
GCC**CGATCGCC**

ATGCTGGACGGCCTAAAGATGGAGGAGAACTTCCAAAGCGCGATCGACACCTCGGCCTCCTTCTCCTCGC
TGCTGGGCAGAGCGGTGAGCCCCAAGTCTGTCTGCGAGGGCTGTCAGCGGGTCATCTTGGACAGGTTTCT
GCTGCGGCTCAACGACAGCTTCTGGCATGAGCAGTGCCTGAGTGCAGTGCCTCCTGCAAAGAGCCCCGGAG
ACCACCTGCTTCTACCGGACAAGAAGCTGTACTGCAAGTATGACTACGAGAAGCTGTTTGTGTTAAAT
GTGGGGGCTGCTTCGAGGCCATCGCTCCCAATGAGTTTGTATGCGGGCCAGAAGAGTGTATACCACCT
GAGCTGCTTCTGCTGCTGTGCTGCGAGCGACAGCTTCAAGAGGGTATGAGTTTGTCTGAAGGAGGGG
CAGCTGCTCTGCAAAGGGGACTATGAGAAGGAGCGGGAGCTGCTCAGCCTGGTGAGCCCAGCAGCCTCAG
ACTCAGGTAAGGTGATGATGAAGAAAGTCTCTGCAAGTCAGCCCATGGGGCAGGGAAAGGAACTGCTGA
GGAAGGCAAGGACCATAAGCGCCCCAAACGTCCGAGAACCATCTTGACAACCAACAGAGGGCAGCATT
AAGGCCTCATTTGAAGTATCCTCAAGCCCTGCAGGAAGGTGAGAGAGACTCTGGCTGCAGAGACAGGGC
TGAGTGTCCGTGCTCCAGGTGTGTTCCAAAACCAGAGAGCGAAGATGAAGAAGCTGGCCAGGCGACA
GCAGCAGCAGCAGCAAGATCAGCAGAACACCCAGAGGCTGAGCTCTGCTCAGACAACCGTGGTGGGAGT
GCTGGGATGGAAGGAATCATGAACCCCTACACGGCTCTGCCACCCACAGCAGCTCCTGGCCATCGAGC
AGAGTGTCTACAGCTCAGATCCCTTCCGACAGGGTCTCACCCACCCAGATGCCTGGAGACCACATGCA
CCCTTATGGTGGCAGGCCCTTTTCCATGACCTGGATAGCGACGACACCTCCCTCAGTAACCTGGGTGAT
TGTTTCTAGCAACCTCAGAAGCTGGGCCTCTGCAGTCCAGAGTGGGAAACCCATTGACCATCTGTACT
CCATGCAGAATTCTACTTCACATCT

ACGGTACGCGGCCGCTCGAGCAGAACTCATCTCAGAAGAGGATCTGGCAGCAATGATATCCTGGATT
ACAAGGATGACGACGATAAGGTTTAA



[View online »](#)

Protein Sequence: >RC229968 representing NM_001174069
 Red=Cloning site Green=Tags(s)

MLDGLKMEENFQSAIDTSASFSSLLGRAVSPKSVCEGCQRVILDRFLRLNDSFWHEQCVQCASCKEPLE
 TTCFYRDKKLYCKYDYEKLFVAVKCGGCFEAIAPNEFVMRAQKSVYHLSCFCCCVCERQLQKDEFVLKEG
 QLLCKGDYEKERELLSLVSPAASDSGKSDDEESLCKSAHGAGKGTAEEGKDHKRPKRPTILTTQRRRAF
 KASFEVSSKPCRKVVRETLAAETGLSVRVVQVWFQNRQAKMKKLARRQQQQQDQNTQRLSSAQTNGGGS
 AGMEGIMNPYALPTPQQLLAIEQSVYSSDPFRQGLTPPQMPGDHMPYGAEPLFHDLSDDDTSLSNLGD
 CFLATSEAGPLQSRVGNPIDHLYSMQNSYFTS

TRTRPLEQKLISEEDLAANDILDYKDDDDKV

Chromatograms: https://cdn.origene.com/chromatograms/mk8056_b02.zip

Restriction Sites: SgfI-MluI

Cloning Scheme:



* The last codon before the Stop codon of the ORF

ACCN: NM_001174069

ORF Size: 1146 bp

OTI Disclaimer: The molecular sequence of this clone aligns with the gene accession number as a point of reference only. However, individual transcript sequences of the same gene can differ through naturally occurring variations (e.g. polymorphisms), each with its own valid existence. This clone is substantially in agreement with the reference, but a complete review of all prevailing variants is recommended prior to use. [More info](#)

OTI Annotation: This clone was engineered to express the complete ORF with an expression tag. Expression varies depending on the nature of the gene.

Components: The ORF clone is ion-exchange column purified and shipped in a 2D barcoded Matrix tube containing 10ug of transfection-ready, dried plasmid DNA (reconstitute with 100 ul of water).

Reconstitution Method:

1. Centrifuge at 5,000xg for 5min.
2. Carefully open the tube and add 100ul of sterile water to dissolve the DNA.
3. Close the tube and incubate for 10 minutes at room temperature.
4. Briefly vortex the tube and then do a quick spin (less than 5000xg) to concentrate the liquid at the bottom.
5. Store the suspended plasmid at -20°C. The DNA is stable for at least one year from date of shipping when stored at -20°C.

RefSeq: [NM_001174069.1](#), [NP_001167540.1](#)

RefSeq ORF: 1149 bp

Locus ID: 4009

UniProt ID: [Q8TE12](#)

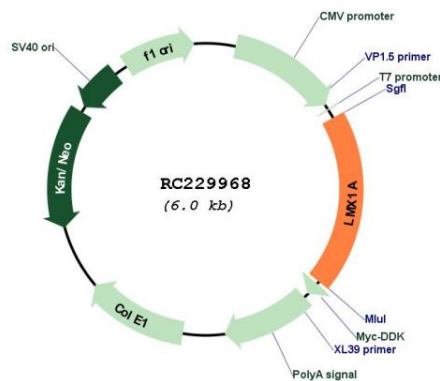
Cytogenetics: 1q23.3

Protein Families: ES Cell Differentiation/IPS, Transcription Factors

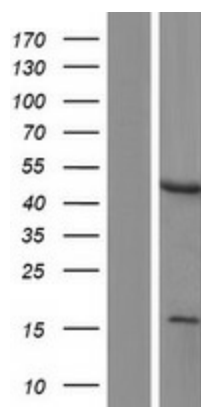
MW: 43.2 kDa

Gene Summary: This gene encodes a homeodomain and LIM-domain containing protein. The encoded protein is a transcription factor that acts as a positive regulator of insulin gene transcription. This gene also plays a role in the development of dopamine producing neurons during embryogenesis. Mutations in this gene are associated with an increased risk of developing Parkinson's disease. Alternate splicing results in multiple transcript variants. [provided by RefSeq, Feb 2012]

Product images:



Circular map for RC229968



Western blot validation of overexpression lysate (Cat# [LY432968]) using anti-DDK antibody (Cat# [TA50011-100]). Left: Cell lysates from untransfected HEK293T cells; Right: Cell lysates from HEK293T cells transfected with RC229968 using transfection reagent MegaTran 2.0 (Cat# [TT210002]).