

Protein Sequence: >RC229966 representing NM_001170752
Red=Cloning site Green=Tags(s)

MGSPAHRPALLLLPPLLLLLLRRVPPSRSPGSGDSPLEDEVGYSHPRYKDTWPCSPIKVKYGDVYCR
 APQGGYYKTALGTRCDIRCQKGYELHGSSLLICQSNKRWSDKVICQKRCPTLAMPANGGFKCVDGAYFN
 SRCEYYCSPGYTLKGERTVTCMDNKAWSGRPASCVDMEPPRIKCPVKERIAEPNKLTVRVSWETPEGRD
 TADGILTDVILKGLPPGSNFPEGDHKKIQTIVYDRAENKGTCKFRVKVRVRCGKLNAPENGYMKCSSDGD
 NYGATCEFSCIGGYELQGSPPARVCQSNLAWSGTEPTCAAMNVNVGVRATAALLDQFYEKRRLLIVSTPTA
 RNLLYLRLQLGMLQAVANPTLLQYGASG

TRTRPLEQKLISEEDLAANDILDYKDDDDKVV

Chromatograms: https://cdn.origene.com/chromatograms/mk8055_h11.zip

Restriction Sites: SgfI-MluI

Cloning Scheme:



* The last codon before the Stop codon of the ORF

ACCN: NM_001170752

ORF Size: 1137 bp

OTI Disclaimer: The molecular sequence of this clone aligns with the gene accession number as a point of reference only. However, individual transcript sequences of the same gene can differ through naturally occurring variations (e.g. polymorphisms), each with its own valid existence. This clone is substantially in agreement with the reference, but a complete review of all prevailing variants is recommended prior to use. [More info](#)

OTI Annotation: This clone was engineered to express the complete ORF with an expression tag. Expression varies depending on the nature of the gene.

Components: The ORF clone is ion-exchange column purified and shipped in a 2D barcoded Matrix tube containing 10ug of transfection-ready, dried plasmid DNA (reconstitute with 100 ul of water).

Reconstitution Method:

1. Centrifuge at 5,000xg for 5min.
2. Carefully open the tube and add 100ul of sterile water to dissolve the DNA.
3. Close the tube and incubate for 10 minutes at room temperature.
4. Briefly vortex the tube and then do a quick spin (less than 5000xg) to concentrate the liquid at the bottom.
5. Store the suspended plasmid at -20°C. The DNA is stable for at least one year from date of shipping when stored at -20°C.

RefSeq: [NM_001170752.1](#), [NP_001164223.1](#)

RefSeq ORF: 1140 bp

Locus ID: 8406

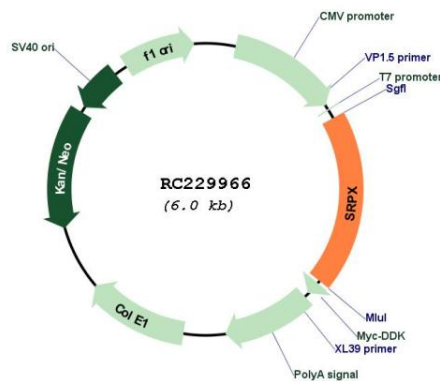
UniProt ID: [P78539](#)

Cytogenetics: Xp11.4

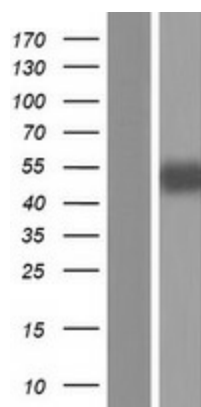
MW: 42.2 kDa

Gene Summary: May be involved in phagocytosis during disk shedding, cell adhesion to cells other than the pigment epithelium or signal transduction.[UniProtKB/Swiss-Prot Function]

Product images:



Circular map for RC229966



Western blot validation of overexpression lysate (Cat# [LY432966]) using anti-DDK antibody (Cat# [TA50011-100]). Left: Cell lysates from untransfected HEK293T cells; Right: Cell lysates from HEK293T cells transfected with RC229966 using transfection reagent MegaTran 2.0 (Cat# [TT210002]).