

## Product datasheet for RC229960

### LILRA3 (NM\_001172654) Human Tagged ORF Clone

#### Product data:

Product Type:	Expression Plasmids
Product Name:	LILRA3 (NM_001172654) Human Tagged ORF Clone
Tag:	Myc-DDK
Symbol:	LILRA3
Synonyms:	CD85E; HM31; HM43; ILT-6; ILT6; LIR-4; LIR4
Mammalian Cell Selection:	Neomycin
Vector:	pCMV6-Entry (PS100001)
E. coli Selection:	Kanamycin (25 ug/mL)
ORF Nucleotide Sequence:	>RC229960 representing NM_001172654 Red=Cloning site Blue=ORF Green=Tags(s)

TTTTGTAATACGACTCACTATAGGGCGCCGGGAATTCGTCGACTGGATCCGGTACCGAGGAGATCTGCC  
GCC**CGATCGC**C

ATGACCCCATCCTCACGGTCTGATCTGTCTCGGGCTGAGCCTGGACCCAGGACCCACGTGCAGGCAG  
GGCCCTCCCAAGCCCACCCTCTGGGCTGAGCCAGGCTCTGTGATCACCAAGGGAGTCTGTGACCCCT  
CAGGTGTCAGGGGAGCCTGGAGACGCAGGAGTACCATCTATATAGAGAAAAGAAAACAGCACTCTGGATT  
ACACGGATCCCACAGGAGCTTGTGAAGAAGGGCCAGTTCCCATCCTATCCATCACCTGGGAACATGCAG  
GGCGGTATTGCTGTATCTATGGCAGCCACACTGCAGGCCTCTCAGAGAGCAGTGACCCCTGGAGCTGGT  
GGTGACAGGAGCCTACAGCAAACCCACCCTCTCAGCTCTGCCAGCCCTGTGGTGACCTCAGGAGGGAAT  
GTGACCATCCAGTGTGACTCACAGGTGGCATTGTGGCTTCATTCTGTGTGTTTCTAAGAAGCCATCAC  
TCTCAGTGCAGCCGGTCTGTCTGGCCCTGGGGAGAAGCTGACCTTCCAGTGTGGCTCTGATGCCGG  
CTACGACAGATTTGTTCTGTACAAGGAGTGGGGACGTGACTTCTCCAGCGCCCTGGCCGGCAGCCCAAG  
GCTGGGCTCTCCAGGCCAATTACCCCTGGGCCCTGTGAGCCGCTCTACGGGGCCAGTACACATGCT  
CCGGTGCATAACAACCTCTCCTCCGAGTGGTCCGGCCCAAGCAGCCCTGGACATCCTGATCACAGGACA  
GATCCGTGCCAGACCCTCTCCTCCGTGCGGCCGGCCCAAGTGGCCCTCAGGAGAGAAGTACCCCTG  
CTGTGTCAGTACAGGGAGGGATGCACACTTTCCTTTTGACCAAGGAGGGGCGAGCTGATCCCCGCTGC  
GTCTAAAATCAAAGCGCAATCTCATAAGTACCAGGCTGAATCCCATGAGTCCTGTGACCTCGGCCCA  
CGCGGGGACCTACAGGTCTACGGCTCACTCAGCTCCAACCCCTACCTGCTGACTCACCCAGTGACCC  
CTGGAGCTCGTGGTCTCAGGAGCAGCTGAGACCCTCAGCCACCACAAAACAAGTCCGACTCCAAGGCTG  
GTGAG

**ACGCGT**ACGCGGCCGCTCGAGCAGAACTCATCTCAGAAGAGGATCTGGCAGCAATGATATCCTGGATT  
ACAAGGATGACGACGATAAGGTTTAA



[View online >](#)

**Protein Sequence:** >RC229960 representing NM\_001172654  
Red=Cloning site Green=Tags(s)

MTPILTVL ICLGLSLDPRTHVQAGPLPKPTLWAEPGSVITQGSPVTLRCQGSLETQEYHLYREKKTALWI  
 TRIPQELVKKGQFPILSITWEHAGRYCCIYGSHTAGLSESSDPLELVVTGAYSKPTLSALPSPVVTSGGN  
 VTIQCDSQVAFDGFILCVSKKPSLSVQPGPVVAPGEKLFQCGSDAGYDRFVLKKEWGRDFLQRPGRQPQ  
 AGLSQANFTLGPVSRSYGGQYTC SGAYNLSSEWSAPSDPLDILITGQIRARPFLSVRPGPTVASGENVTL  
 LCQSQGGMHTFLLTKEGAADSPRLRLKSKRQSHKYQAEFPMSPVTS AHAGTYRCYGLSSNPYLLTHPSDP  
 LELVVSGAAETLSPPQNKSDSKAGE

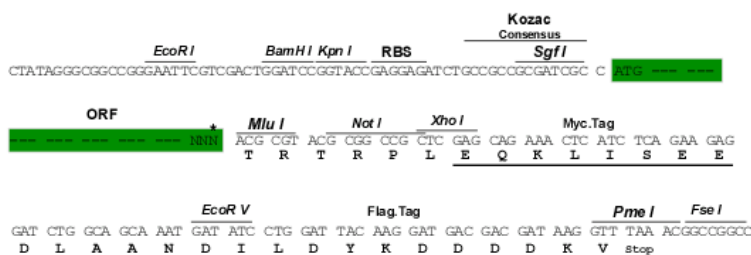
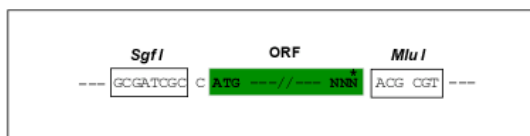
TRTRPLEQKLISEEDLAANDILDYKDDDDKV

**Chromatograms:** [https://cdn.origene.com/chromatograms/mk8055\\_e12.zip](https://cdn.origene.com/chromatograms/mk8055_e12.zip)

**Restriction Sites:** SgfI-MluI

**Cloning Scheme:**

Cloning sites used for ORF Shuttling:



\* The last codon before the Stop codon of the ORF

**ACCN:** NM\_001172654

**ORF Size:** 1125 bp

**OTI Disclaimer:** The molecular sequence of this clone aligns with the gene accession number as a point of reference only. However, individual transcript sequences of the same gene can differ through naturally occurring variations (e.g. polymorphisms), each with its own valid existence. This clone is substantially in agreement with the reference, but a complete review of all prevailing variants is recommended prior to use. [More info](#)

**OTI Annotation:** This clone was engineered to express the complete ORF with an expression tag. Expression varies depending on the nature of the gene.

**Components:** The ORF clone is ion-exchange column purified and shipped in a 2D barcoded Matrix tube containing 10ug of transfection-ready, dried plasmid DNA (reconstitute with 100 ul of water).

**Reconstitution Method:**

1. Centrifuge at 5,000xg for 5min.
2. Carefully open the tube and add 100ul of sterile water to dissolve the DNA.
3. Close the tube and incubate for 10 minutes at room temperature.
4. Briefly vortex the tube and then do a quick spin (less than 5000xg) to concentrate the liquid at the bottom.
5. Store the suspended plasmid at -20°C. The DNA is stable for at least one year from date of shipping when stored at -20°C.

**RefSeq:** [NM\\_001172654.2](#), [NP\\_001166125.1](#)

**RefSeq ORF:** 1128 bp

**Locus ID:** 11026

**UniProt ID:** [Q8N6C8](#)

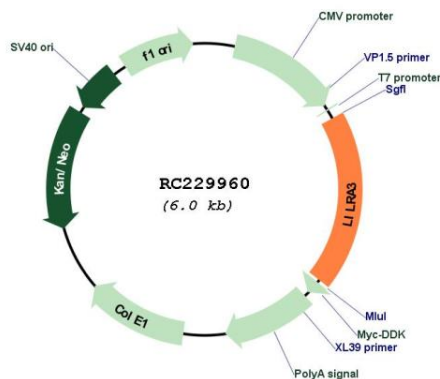
**Cytogenetics:** 19q13.4

**Protein Families:** Secreted Protein

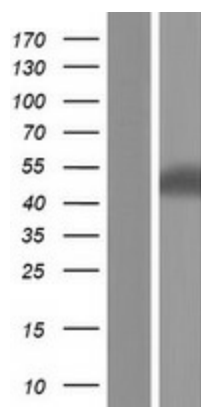
**MW:** 40.8 kDa

**Gene Summary:** This gene encodes a member of a family of immunoreceptors that are expressed predominantly in monocytes and B cells, and at lower levels in dendritic cells and natural killer cells. The encoded protein lacks the transmembrane region found in other members of this family. It acts as a soluble receptor for class I major histocompatibility complex (MHC) antigens. Alternatively spliced transcript variants encoding different isoforms have been found. This gene is located in a cluster of related genes on chromosome 19 and is polymorphic in human populations, with many individuals containing a deletion of this genomic region. [provided by RefSeq, Mar 2014]

### Product images:



Circular map for RC229960



Western blot validation of overexpression lysate (Cat# [LY432960]) using anti-DDK antibody (Cat# [TA50011-100]). Left: Cell lysates from untransfected HEK293T cells; Right: Cell lysates from HEK293T cells transfected with RC229960 using transfection reagent MegaTran 2.0 (Cat# [TT210002]).