

Product datasheet for RC229947

TIM 1 (HAVCR1) (NM_001173393) Human Tagged ORF Clone

Product data:

Product Type:	Expression Plasmids
Product Name:	TIM 1 (HAVCR1) (NM_001173393) Human Tagged ORF Clone
Tag:	Myc-DDK
Symbol:	TIM 1
Synonyms:	CD365; HAVCR; HAVCR-1; KIM-1; KIM1; TIM; TIM-1; TIM1; TIMD-1; TIMD1
Mammalian Cell Selection:	Neomycin
Vector:	pCMV6-Entry (PS100001)
E. coli Selection:	Kanamycin (25 ug/mL)
ORF Nucleotide Sequence:	>RC229947 representing NM_001173393 Red=Cloning site Blue=ORF Green=Tags(s)

TTTTGTAATACGACTCACTATAGGGCGCCGGGAATTCGTCGACTGGATCCGGTACCGAGGAGATCTGCC
GCC**CGATCGCC**

ATGCATCCTCAAGTGGTCATCTTAAGCCTCATCTACATCTGGCAGATTCTGTAGCTGGTCTGTAAAGG
TTGGTGGAGAGGCAGGTCCATCTGTCACACTACCTGCCACTACAGTGGAGCTGTCACATCCATGTGCTG
GAATAGAGGCTCATGTTCTCTATTACATGCCAAAATGGCATTGTCTGGACCAATGGAACCCACGTCACC
TATCGGAAGGACACACGCTATAAGCTATTGGGGGACCTTCAAGAAGGGATGTCTCTTTGACCATAGAAA
ATACAGCTGTGTCTGACAGTGGCGTATATTGTTGCCGTGTGAGCACCGTGGTGGTTCATGACATGAA
AATCACCGTATCATTGGAGATTGTGCCACCAAGGTCAGGACTACTCCAATTGTCACAACCTGTTCCAACC
GTCACGACTGTTGCAACGAGCACCCTGTTCCAACGACAACGACTGTTCCAATGACGACTGTTCCAACGA
CAACTGTTCCAACAACAATGAGCATTCCAACGACAACGACTGTTCTGACGACAATGACTGTTTCAACGAC
AACGAGCGTTCACGACAACGAGCATTCCAACAACAACAAGTGTCCAGTGACAACAACCTGCTCTACC
TTTGTTCCTCCAATGCCTTTGCCAGGCAGAACCATGAACCAGTAGCCACTTCACCATCTTCACCTCAGC
CAGCAGAAACCCACCCTACGACTGCAGGGAGCAATAAGGAGAGAACCACCAGCTCACCATTGTACTC
TTACACAACAGATGGGAATGACACCGTGACAGAGTCTTCAGATGGCCTTTGGAATAACAATCAAACCTCAA
CTGTTCTAGAACATAGTCTACTGACGGCCAATACCACTAAAGGAATCTATGCTGGAGTCTGTATTTCTG
TCTTGGTGCTTCTGCTTTTTGGGTGTATCATTGCCAAAAAGTATTTCTTCAAAAAGGAGGTTCAACA
ACTAAGTGTTCATTTAGCAGCCTTCAAATTAAGCTTTGCAAAATGCAGTTGAAAAGGAAGTCCAAGCA
GAAGACAATATCTACATTGAGAATAGTCTTTATGCCACGGAC

ACGGTACGCGGCCGCTCGAGCAGAACTCATCTCAGAAGAGGATCTGGCAGCAATGATATCCTGGATT
ACAAGGATGACGACGATAAGGTTAA



[View online »](#)

Protein Sequence: >RC229947 representing NM_001173393
 Red=Cloning site Green=Tags(s)

MHPQVVILSLILHLADSVAGSVKVGGEAGPSVTLPCHYSGAVTSMCWNRGSCSLFTCQNGIVWTNGTHVT
 YRKDTRYKLLGDLRRDVSILTIENTAVSDSGVYCCRVEHRGWFNMDKITVLSLEIVPPKVTTPIVTTVPT
 VTTVRTSTTVPTTTTVPMTTVPMTTVPMTTMSIPTTTTTLTMTVSTTTSVPTTTSIPTTTSVPVTTTST
 FVPPMPLPRQNHPEVATSPSSPQPAETHPTTLQGAIRREPTSSPLYSYTTDGNDDVTESDGLWNNNQTK
 LFLHSLLTANTTKGIYAGVCISVLLVLLALLGVIIAKKYFFKKEVQQLSVSFSSQLIKALQNAVEKEVQA
 EDNIYIENSLYATD

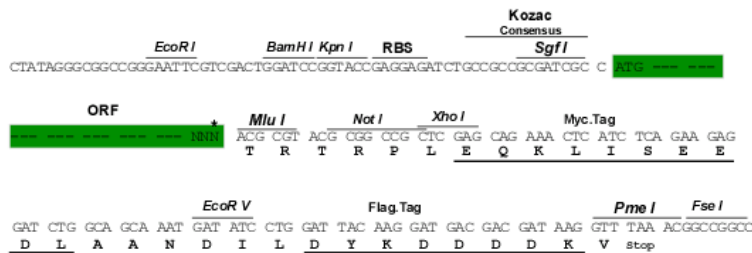
TRTRPLEQKLISEEDLAANDILDYKDDDDKV

Chromatograms: https://cdn.origene.com/chromatograms/mg4170_b05.zip

Restriction Sites: SgfI-MluI

Cloning Scheme:

Cloning sites used for ORF Shuttling:



* The last codon before the Stop codon of the ORF

ACCN: NM_001173393

ORF Size: 1092 bp

OTI Disclaimer: The molecular sequence of this clone aligns with the gene accession number as a point of reference only. However, individual transcript sequences of the same gene can differ through naturally occurring variations (e.g. polymorphisms), each with its own valid existence. This clone is substantially in agreement with the reference, but a complete review of all prevailing variants is recommended prior to use. [More info](#)

OTI Annotation: This clone was engineered to express the complete ORF with an expression tag. Expression varies depending on the nature of the gene.

Components: The ORF clone is ion-exchange column purified and shipped in a 2D barcoded Matrix tube containing 10ug of transfection-ready, dried plasmid DNA (reconstitute with 100 ul of water).

Reconstitution Method:

1. Centrifuge at 5,000xg for 5min.
2. Carefully open the tube and add 100ul of sterile water to dissolve the DNA.
3. Close the tube and incubate for 10 minutes at room temperature.
4. Briefly vortex the tube and then do a quick spin (less than 5000xg) to concentrate the liquid at the bottom.
5. Store the suspended plasmid at -20°C. The DNA is stable for at least one year from date of shipping when stored at -20°C.

RefSeq: [NM_001173393.3](#)

RefSeq Size: 1359 bp

RefSeq ORF: 1095 bp

Locus ID: 26762

UniProt ID: [Q96D42](#)

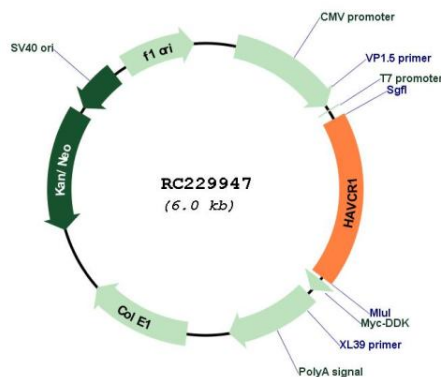
Cytogenetics: 5q33.3

Protein Families: Druggable Genome, Transmembrane

MW: 39.2 kDa

Gene Summary: The protein encoded by this gene is a membrane receptor for both human hepatitis A virus (HHAV) and TIMD4. The encoded protein may be involved in the moderation of asthma and allergic diseases. The reference genome represents an allele that retains a MTTVP amino acid segment that confers protection against atopy in HHAV seropositive individuals. Alternative splicing of this gene results in multiple transcript variants. Related pseudogenes have been identified on chromosomes 4, 12 and 19. [provided by RefSeq, Apr 2015]

Product images:



Circular map for RC229947