

Product datasheet for **RC229935**

PEG10 (NM_001184962) Human Tagged ORF Clone

Product data:

Product Type:	Expression Plasmids
Product Name:	PEG10 (NM_001184962) Human Tagged ORF Clone
Tag:	Myc-DDK
Symbol:	PEG10
Synonyms:	EDR; HB-1; Mar2; Mart2; MEF3L; RGAG3; RTL2; SIRH1
Mammalian Cell Selection:	Neomycin
Vector:	pCMV6-Entry (PS100001)
E. coli Selection:	Kanamycin (25 ug/mL)
ORF Nucleotide Sequence:	>RC229935 representing NM_001184962 Red=Cloning site Blue=ORF Green=Tags(s)

TTTTGTAATACGACTCACTATAGGGCGGCCGGAATTCGTCGACTGGATCCGGTACCGAGGAGATCTGCC
GCC**CGATCGCC**

ATGACCGAACGAAGAAGGGACGAGCTCTCTGAAGAGATCAACAACCTTAAGAGAGAAGGTCATGAAGCAGT
CGGAGGAGAACAACAACCTGCAGAGCCAGGTGCAGAAGCTCACAGAGGAGAACCACCCTTCGAGAGCA
AGTGAACCCACCCTGAGGATGAGGATGATGACATCGAGCTCCGCGGTGCTGCAGCAGCTGCTGCCCA
CCCCCTCAATAGAGGAAGAGTGCCAGAAGACCTCCAGAGAAGTTCGATGGCAACCCAGACATGCTGG
CTCCTTTCATGGCCAGTGCCAGATCTTCATGGAAAAGAGCACCCAGGGATTTCTCAGTTGATCGTGTCCG
TGTCTGCTTCGTGACAAGCATGATGACCGGCCGTGCTGCCGTTGGGCCCTCAGCAAAGCTGGAGCGCTCC
CACTACCTGATGCACAACCTACCCAGCTTTCATGATGGAATGAAGCATGTCTTTGAAGACCTCAGAGGC
GAGAGGTTGCCAAACGCAAGATCAGACGCCCTGCGCCAAGGCATGGGGTCTGTGATCGACTACTCCAATGC
TTTCCAGATGATTGCCAGGACCTGGATTGGAACGAGCCTGCGCTGATTGACCAGTACCACGAGGGCCTC
AGCGACCACATTCAGGAGGAGCTCTCCACCTCGAGGTCGCCAAGTCGCTGTCTGCTCTGATTGGGCAGT
GCATTCACATTGAGAGAAGGCTGGCCAGGGCTGCTGCAGCTCGCAAGCCACGCTCGCCACCCCGGGCGCT
GGTGTTCCTCACATTGCAAGCCACCACCAGGTAGATCCAACCGAGCCGGTGGGAGGTGCCCGCATGCC
CTGACGCAGGAAGAAAAGAAAGACGCAGAAAGCTGAACCTGTGCCTCTACTGTGGAACAGGAGGTCACT
ACGCTGACAATTGCTCTGCCAAGGCCTCAAAGTCTTCGCCGCGGGAAACTCCCCGGCCCCGCTG

ACGCGTACGCGGCCGCTCGAGCAGAAACTCATCTCAGAAGAGGATCTGGCAGCAATGATATCCTGGATT
ACAAGGATGACGACGATAAGGTTTAA



[View online »](#)

Protein Sequence: >RC229935 representing NM_001184962
Red=Cloning site Green=Tags(s)

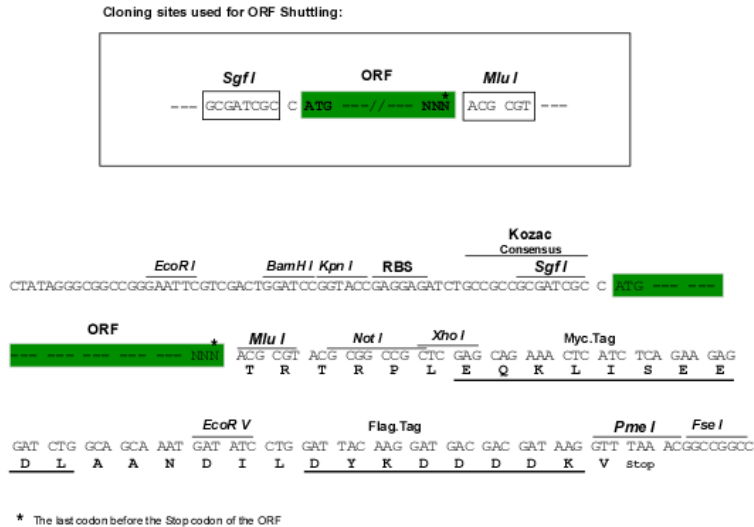
MTERRRDELSEEINNLEKVMKQSEENNNLQSQVQKLTEENTTLREQVEPTPEDEDDDIELRGAAAAAAP
 PPPIEEECPEDLPEKFDGNPMDLAPFMAQCQIFMEKSTRDFSVDVRVRCFVTSMMTGRAARWASAKLERS
 HYL MHNYP AFMMEMKHVFEDPQRREVAKRKIRRLRQMGSVIDYSNAFQMI AQDL DWN EPALIDQYHEGL
 SDHIQEELSHLEVAKLSALIGQCIIHIERRLARAAAARKPRSPPRALVLPHIASHHQVDPTPEVGGARMR
 LTQEEKERRRKLNLCLYCGTGGHYADNCPAKASKSSPAGNSPAPL

TRTRPLEQKLISEEDLAANDILDYKDDDDKV

Chromatograms: https://cdn.origene.com/chromatograms/ja1543_g05.zip

Restriction Sites: SgfI-MluI

Cloning Scheme:



ACCN: NM_001184962

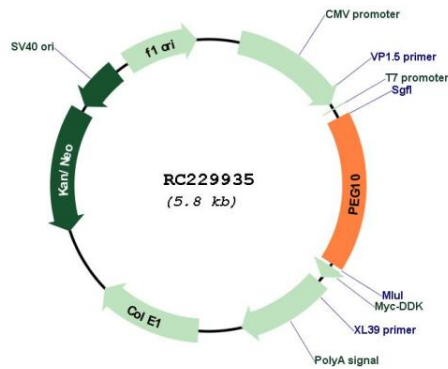
ORF Size: 975 bp

OTI Disclaimer: Due to the inherent nature of this plasmid, standard methods to replicate additional amounts of DNA in E. coli are highly likely to result in mutations and/or rearrangements. Therefore, OriGene does not guarantee the capability to replicate this plasmid DNA. Additional amounts of DNA can be purchased from OriGene with batch-specific, full-sequence verification at a reduced cost. Please contact our customer care team at custsupport@origene.com or by calling 301.340.3188 option 3 for pricing and delivery.

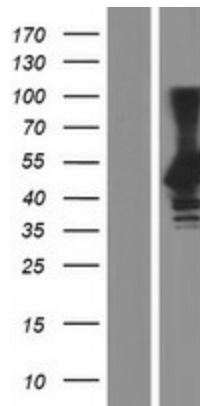
The molecular sequence of this clone aligns with the gene accession number as a point of reference only. However, individual transcript sequences of the same gene can differ through naturally occurring variations (e.g. polymorphisms), each with its own valid existence. This clone is substantially in agreement with the reference, but a complete review of all prevailing variants is recommended prior to use. [More info](#)

OTI Annotation:	This clone was engineered to express the complete ORF with an expression tag. Expression varies depending on the nature of the gene.
Components:	The ORF clone is ion-exchange column purified and shipped in a 2D barcoded Matrix tube containing 10ug of transfection-ready, dried plasmid DNA (reconstitute with 100 ul of water).
Reconstitution Method:	<ol style="list-style-type: none">1. Centrifuge at 5,000xg for 5min.2. Carefully open the tube and add 100ul of sterile water to dissolve the DNA.3. Close the tube and incubate for 10 minutes at room temperature.4. Briefly vortex the tube and then do a quick spin (less than 5000xg) to concentrate the liquid at the bottom.5. Store the suspended plasmid at -20°C. The DNA is stable for at least one year from date of shipping when stored at -20°C.
RefSeq Size:	6628 bp
RefSeq ORF:	1080 bp
Locus ID:	23089
UniProt ID:	Q86TG7
Cytogenetics:	7q21.3
MW:	37 kDa
Gene Summary:	<p>This is a paternally expressed imprinted gene that is thought to have been derived from the Ty3/Gypsy family of retrotransposons. It contains two overlapping open reading frames, RF1 and RF2, and expresses two proteins: a shorter, gag-like protein (with a CCHC-type zinc finger domain) from RF1; and a longer, gag/pol-like fusion protein (with an additional aspartic protease motif) from RF1/RF2 by -1 translational frameshifting (-1 FS). While -1 FS has been observed in RNA viruses and transposons in both prokaryotes and eukaryotes, this gene represents the first example of -1 FS in a eukaryotic cellular gene. This gene is highly conserved across mammalian species and retains the heptanucleotide (GGGAAAC) and pseudoknot elements required for -1 FS. It is expressed in adult and embryonic tissues (most notably in placenta) and reported to have a role in cell proliferation, differentiation and apoptosis. Overexpression of this gene has been associated with several malignancies, such as hepatocellular carcinoma and B-cell lymphocytic leukemia. Knockout mice lacking this gene showed early embryonic lethality with placental defects, indicating the importance of this gene in embryonic development. Additional isoforms resulting from alternatively spliced transcript variants, and use of upstream non-AUG (CUG) start codon have been reported for this gene. [provided by RefSeq, Oct 2014]</p>

Product images:



Circular map for RC229935



Western blot validation of overexpression lysate (Cat# [LY432935]) using anti-DDK antibody (Cat# [TA50011-100]). Left: Cell lysates from untransfected HEK293T cells; Right: Cell lysates from HEK293T cells transfected with RC229935 using transfection reagent MegaTran 2.0 (Cat# [TT210002]).